

Working with the Picture Tube™ tool in Corel® Paint Shop™ Pro X4

In this tutorial, we'll look at how to create and use Picture Tubes.



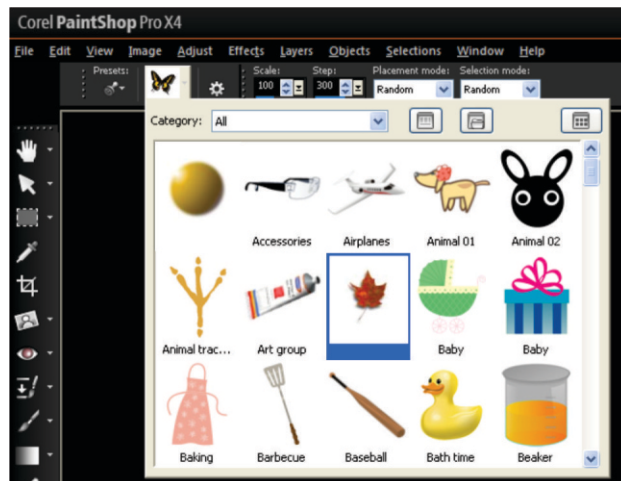
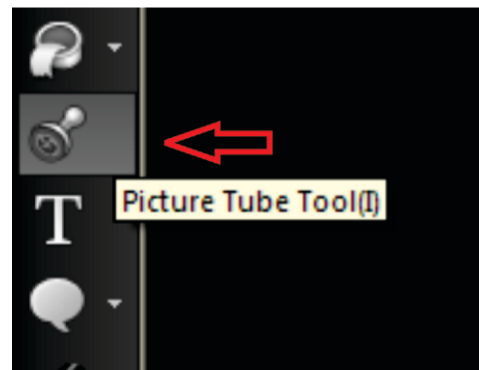
What you will learn:

- Using the Picture Tube tool works
- Creating your own picture tubes

Using the Picture Tube tool

The Picture Tube tool lets you paint on photos with a collection of professionally designed artistic elements. For example, you can add butterflies and beetles to a picnic setting, fill an aquarium with fish, or frame a picture with holly. Picture Tubes™ are available in a variety of themes, and you can also create their own graphics to use with the Picture Tube tool.

1. In the Edit workspace, choose the **Picture Tube** tool on the Tools toolbar.



2. On the Tool Options palette, select a picture tube from the **Picture Tube** drop-list.

3. In the image window, click to paint with one picture tube image, or drag to paint with multiple picture tube images.



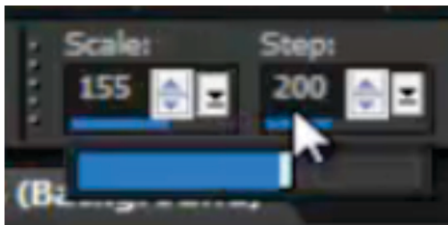
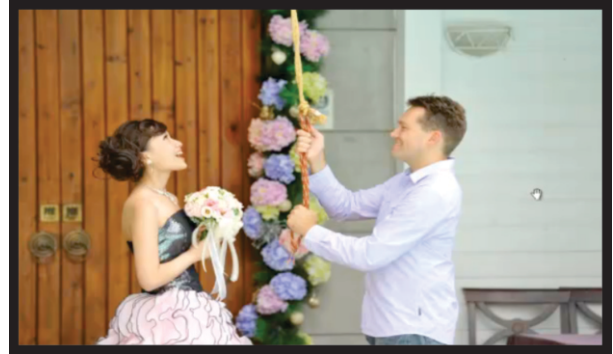
How the Picture Tube tool works

Picture tubes are PspTube files, which are made up of a series of images. Each PspTube file can have any number of images. As you paint with the Picture Tube tool, Corel PaintShop Pro X4 paints one image from the picture tube after another. Many picture tubes create separate, discrete images, and others create the effect of a continuous image as seen below.



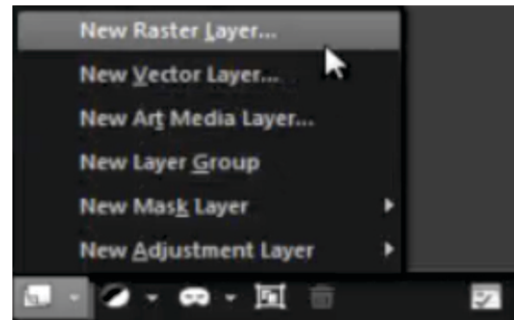
Corel® DISCOVERY CENTER

In this example, we'll add some confetti to a wedding photo.



With the Picture Tube tool selected, set the **Scale** control to **155** on the Tools Options palette.

We could add our picture tube objects on the background image, but spraying them on a separate layer gives us much more flexibility. On the Layers palette, click the **New Layer** button, and choose **New Raster Layer**.

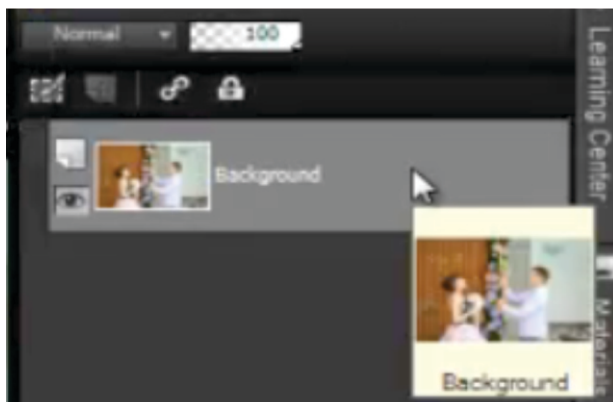


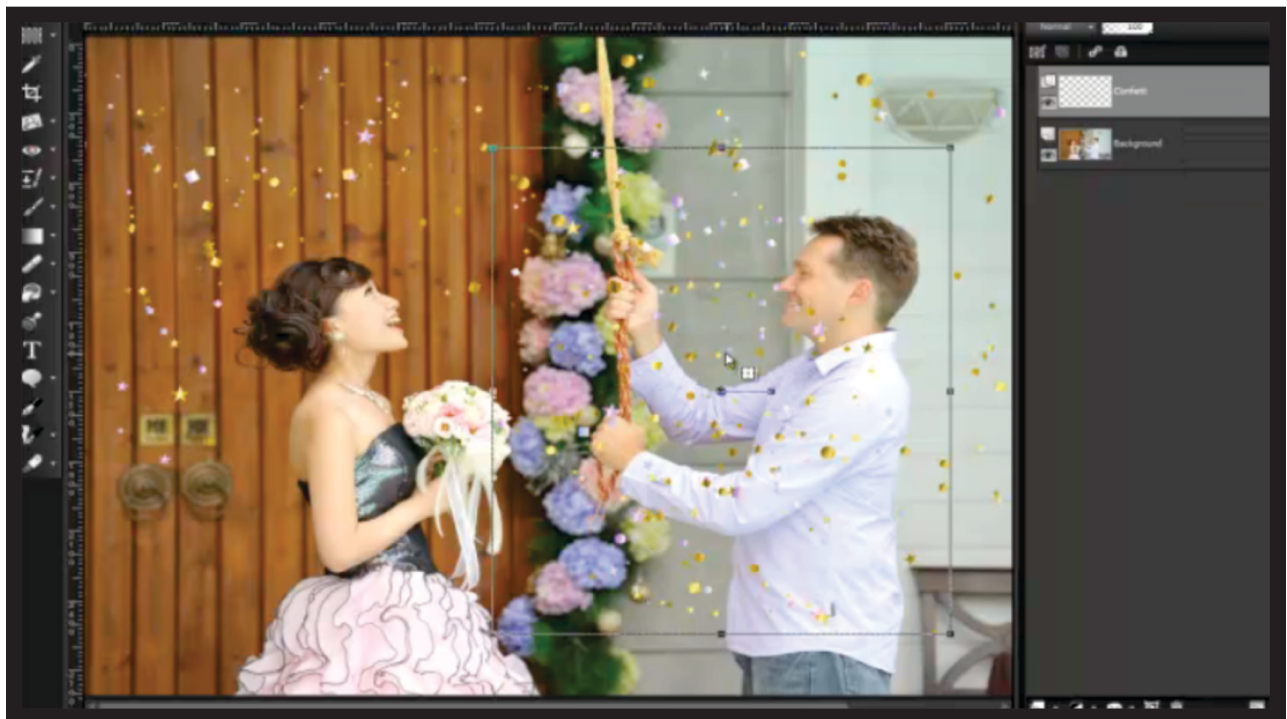
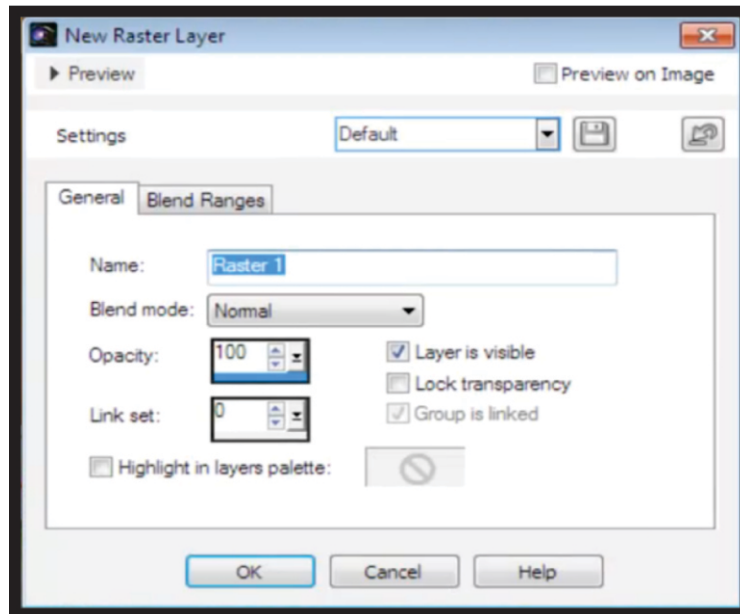
Corel® DISCOVERY CENTER

We added our picture tube objects to the Background image...
but spraying these on to a separate layer will give us much more flexibility



Add a New Raster Layer...
The Confetti layer is now the “active” layer...
Now spray some more confetti with the Pick tool you can now reposition the confetti layer wherever it looks best.





- Use the rotation handle to rotate the layer.
- Drag the corner handles to scroll up or down

Using a picture tube on a raster layer allows you to adjust the composition of the objects to achieve the best effect.

Creating a picture tube

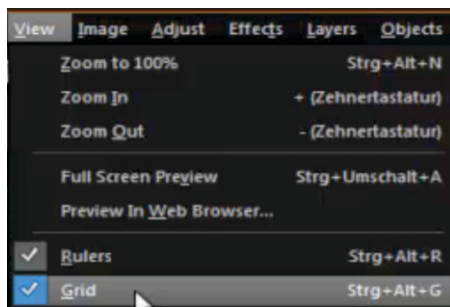
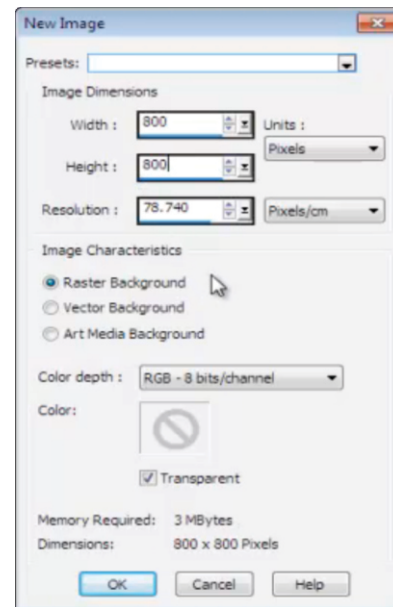
Each picture tube file is made up of a series of images arranged in rows and columns, called cells. Picture tubes are created by placing objects within a grid.



Some picture tubes are quite simple, like this one above. Others, like the one below, can get quite complex depending on the number images in its grid.

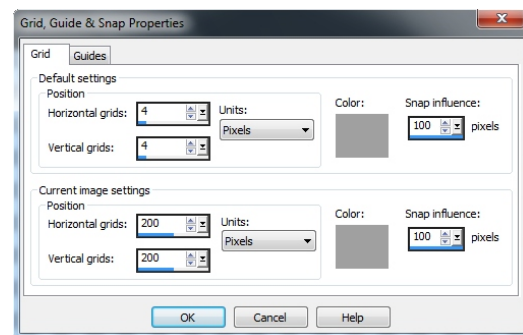


1. We'll start with a new document for a 4x4 grid by selecting **File** menu ► **New**.
2. Choose **Pixels** from the **Units** drop-list, and set the width and height to **800**. The rest of the default settings are fine.



3. Next, set up the grid by selecting **View** menu ► **Grid**.
4. Select **View** menu ► **Change Grid, Guide & Snap Properties** to display the Grid, Guide & Snap Properties dialog box.

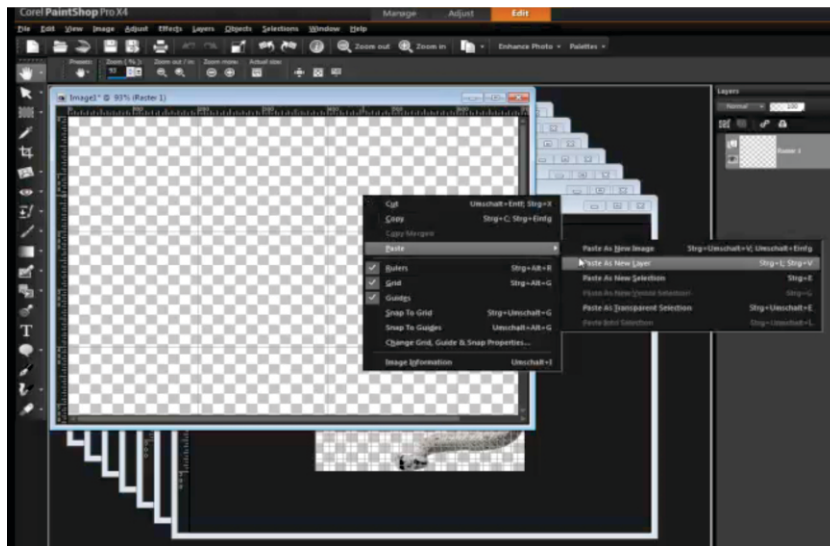
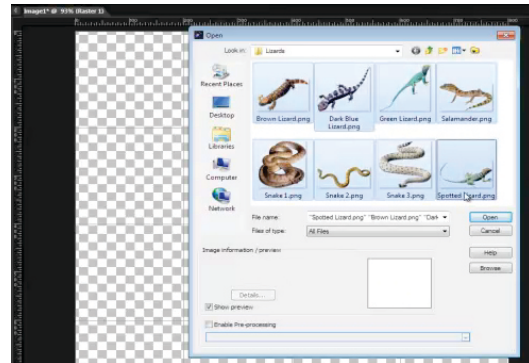
5. In the Current image settings area, set the **Horizontal grids** and **Vertical grids** controls to **200**.



Corel® DISCOVERY CENTER

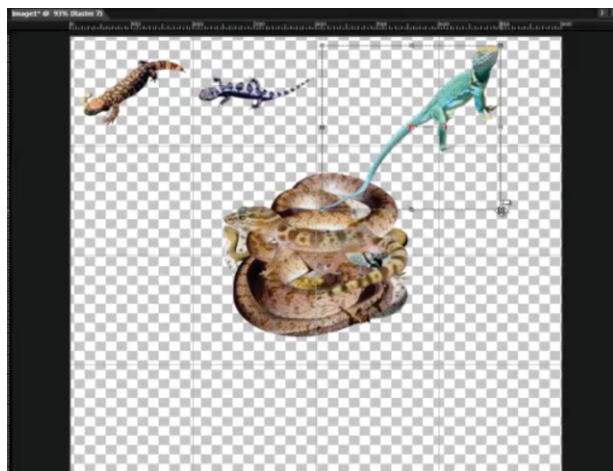
6. Now, add the images you want for your custom picture tube by selecting **File** menu ► **Open**, choosing the images, and clicking **Open**.

7. Select **Window** menu ► **Cascade**.

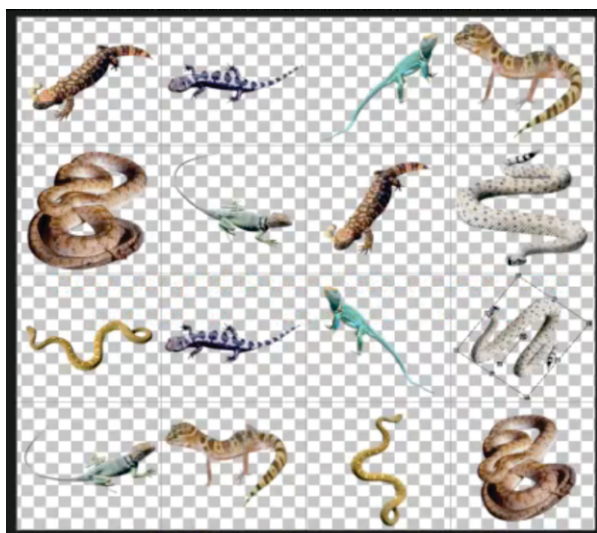
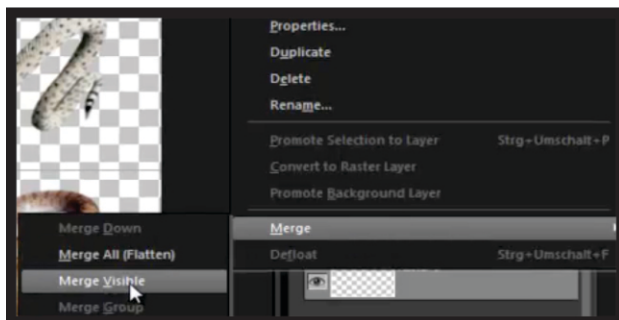


8. For each image, right-click its title bar, and choose **Copy**. Then, in the picture tube file, right-click the title bar, and choose **Paste Paste As New Layer** to create collection of objects on separate layers, giving you the option to scale, rotate, and reposition each one.

9. In the picture tube file, select a layer on the Layers palette, and drag a corner handle to resize it to fit in a grid cell. Repeat this for every layer copied into the picture tube file.



10. On the Layers palette, right-click any layer, and select **Merge ► Merge Visible**.

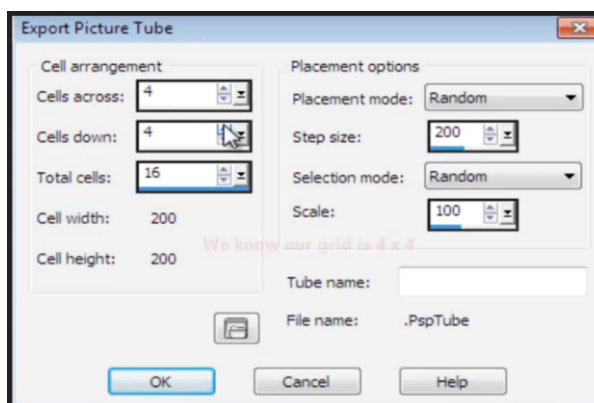


The grid is complete and ready to be saved as a PspTube file.

11. Select **File menu ► Export Picture Tube** to open the Export Picture Tube dialog box.

12. Set the **Cell across** and **Cell down** controls to **4**.

13. Choose options from the **Placement mode** and **Selection mode** drop-lists, set the **Scale** and **Step size** controls, and click **OK**.



The PspTube file is now ready for use with the Picture Tube tool.



If you enjoyed this tutorial, be sure to check out the other tutorials that are available in the Discovery Center. If you have any ideas for additional tutorials or projects that you would like to see in the future, e-mail Discovery.Center@corel.com.