



WinDVD[®] Pro 11

Reviewer's Guide



Corel® WinDVD® Pro 11

Contents

1 Introducing Corel WinDVD Pro 11.....	1
2 What's included?.....	3
3 Key features	5
Fluid playback experience	5
Outstanding Blu-ray and Blu-ray 3D support	8



Introducing Corel® WinDVD® Pro 11

Corel® WinDVD® Pro 11 is a world-leading 2D and 3D video player that supports DVD, Blu-ray™, AVCHD™, and all the latest video formats and containers. With more than 250 million copies sold, it's one of the most universally recognized products.

Fluid playback experience

WinDVD Pro 11 provides a minimalist interface so that you can enjoy your movies without distraction. It offers a smooth and easy playback experience, with responsive controls that appear only when you hover over the viewing area. Optimized for the latest CPUs and GPUs from NVIDIA®, Intel®, and AMD, it also provides numerous enhancements and effects so you can get the most out of your videos.

With new Playlists, you can easily manage your video collection. WinDVD Pro 11 also includes power-saving technology for Windows® 7 and Windows Vista® laptops, so that your battery power never runs short of your movie length.

Outstanding Blu-ray™ and Blu-ray™ 3D support

WinDVD Pro 11 is a perfect solution for anyone who wants more than default operating system media players can provide. It offers advanced 3D and Blu-ray™ playback technology, including support for frame sequential, polarization, and anaglyph 3D, as well as HDMI connectivity for true 1080p picture quality.

In addition, support for BD pop-up menus, BD-J, and the interactivity of BD-Live, help you take full advantage of your Blu-ray discs. Plus, a range of cinematic surround sound configurations ensure that you hear and feel whatever you're watching — whether you're huddled over your laptop in an airport, entertaining the kids on a road trip, or connecting to your big screen TV for a cinematic home movie experience.

2



What's included?

Main application

- **Corel® WinDVD® Pro 11**

Extras

- **3D glasses**

Documentation and other content

- **Getting Started Guide**

Minimum system requirements for Blu-ray™ and HD video playback

- Intel® Core™ II Duo T2400 1.83 GHz (or higher), or AMD Athlon™ 64 X2 3800+ 2.0 GHz (or higher) recommended
- Microsoft® Windows® 7, Windows® Vista, or Windows® XP, with the latest service packs installed
- NVIDIA® GeForce™ 8/9/10 series, GTX series or newer VGA; AMD M7x and above; Intel® GM45/G45 series and above (Windows Vista/Windows 7), or Intel® Core™ processor families
- 1 GB of RAM
- Minimum 128 MB of VRAM; recommended 256 MB of VRAM
- 330 MB of free disk space
- Windows®-compatible sound card
- Windows-compatible optical drive for DVD/AVCHD™ playback
- Windows-compatible Blu-ray drive for Blu-ray playback
- Internet connection required for online features (BD-Live)

Minimum system requirements for Blu-ray™ 3D playback

- **Operating system:** Windows® 7
- **VGA (MVC decoder support required for Blu-ray™ 3D playback):**
 - NVIDIA® GeForce™ 500/400/300/200 or newer
 - AMD Radeon™ HD 6000 series or newer
 - Intel® H55 and Intel® Core™ processor families
- **CPU:** Intel® Core™ II Duo T2400 1.83 GHz, AMD Athlon™ 64 X2 3800+ 2.0 GHz or higher recommended
- **Memory:** 1 GB of RAM minimum
- **3D display for frame sequential, polarization, and anaglyph 3D playback:**
 - frame sequential/polarization-supported monitor
 - VGA card + updated drivers for NVIDIA® GeForce 500/400/300/200/100/9 series/8 series or newer
 - AMD Radeon™ HD 6000 series or newer
 - Intel® H5x/G4x series or newer
- **3D display for use with the HDMI 1.4 compatible panel for 3D playback:**
 - HDMI 1.4-compatible TV/monitor
 - VGA card + updated drivers for NVIDIA® GeForce 500/400/300/200/100/9 series/8 series or newer
 - AMD Radeon™ HD 6000 series or newer
 - Intel® H5x series or newer
- **3D display for use with NVIDIA® 3D Vision for 3D playback (frame sequential display):**
 - 120Hz supported PC monitor through DVI-D link
 - NVIDIA® 3D Vision device
 - VGA card + updated drivers for NVIDIA® GeForce 500/400/300/200/100/9 series/8 series or newer
- **3D display for eDP output (internal LCD, frame sequential display):**
 - 2nd generation Intel® Core™ processor or newer + latest VGA driver

Disc format support

- **Blu-ray discs/Blu-ray 3D discs:** BDAV, BDMV, Blu-ray 3D formats
- **DVD:** DVD-Video, AVCHD, AVCREC, DVD-VR, DVD+VR, Karaoke
- **CD:** VCD, SVCD, Audio

File format support

- **Video:** MPG, MPEG, AVI, DAT, VOB, H.264, AVC, VC1, MPEG-2 HD, MOV, QT, MP4, 3GP, 3GPP, 3G2
- **HD video:** MPEG-2 HD, WMV-HD, MP4-HD, FLV, MKV, VC-1, QuickTime®
- **Windows Media®:** ASF, WMV, WMA, DVR-MS
- **Audio:** MP3, WAV, Audio CD files

3



Key features

Corel® WinDVD® Pro 11 is a world-leading 3D video player that supports DVD, Blu-ray™, AVCHD™, and all the latest video formats and containers.

Fluid playback experience

Whether you're watching a treasured DVD, playing an HD video file, or getting blown away by the latest Blu-ray 3D blockbuster, WinDVD Pro 11 offers a smooth and easy playback experience.

Enhanced! Uncluttered, intuitive interface: The WinDVD Pro 11 interface makes it easy to fully immerse yourself in whatever you're watching. Minimalist and devoid of distraction, all the playback controls you need appear only when you hover over the viewing area. In addition, a convenient right-click menu provides quick access to additional audio settings and video navigation options, such as chapter, title, subtitle, caption, full screen, zoom, repeat, and shuffle.



The WinDVD Pro 11 interface

Give it a try

To access the control bar and right-click menu

- 1 Insert a DVD or Blu-ray disc in your default optical drive. WinDVD will start automatically.
- 2 Hover over the viewing area to activate the control bar ribbon.
- 3 Right-click in the viewing area to access the additional audio settings and video navigation options.
If the media you are playing does not support a particular setting or option, it will be grayed out.

Enhanced! Performance optimization: WinDVD Pro 11 is optimized for new CPUs and GPUs from NVIDIA®, Intel®, and AMD, which results in fast and fluid video playback — no matter where you're watching. And for Windows Vista and Windows 7 laptop users, WinDVD offers power-saving technology that helps to ensure that your battery lasts the whole movie.

New! Playlists: With WinDVD Pro 11, you can now create custom playlists, which are a great way to keep track of a burgeoning video collection. It's a breeze to manage your playlists, too; you simply drag files to add to a playlist, and you can add or remove files with a single click.




Playlists can help you keep track of your video collection.

Give it a try

To create a Playlist

- 1 Right-click in the viewing area, and choose **Show Playlist** from the drop-menu.
- 2 Drag any files that you want to add to the **Playlist** panel.

Give it a try

- 3** To name your playlist, type a name in the **Unsaved Playlist** text box.
- To play individual files from a playlist, double-click the file you want to play.
 - To remove a file from the playlist, select the file and then click the **Remove**  button.

New! Enhanced! TimeStretch: You can use TimeStretch to modify playback speed without affecting stereo output or distorting the audio. TimeStretch is particularly useful if you want to watch a video when you have a limited amount of available time, for example, during an airport layover.

Enhanced! Automatic video enhancements: When you're watching a video with WinDVD Pro 11, automatic anti-blur, anti-shake, and pixelation reduction features are at work in the background, sharpening the video to ensure you have the best possible picture quality.

Enhanced! Color and lighting controls: WinDVD Pro 11 provides both automatic and manual settings, such as color correction, HD upscaling, and other lighting controls, to help you adjust the picture quality to suit your preference. For example, you may want to dim the lighting if you are watching a video in a bright environment.






Enhanced! Capture Image/QuickClip: With WinDVD Pro 11, you can easily capture an image or brief clip from a video. This lets you preserve your favorite movie scene as a desktop or laptop wallpaper, or instantly share a fun image with friends via email. You can also easily create and share a 15-second animated GIF from a selected video segment.



You can capture images and brief clips to share instantly.

Give it a try

To use Capture Image/QuickClip

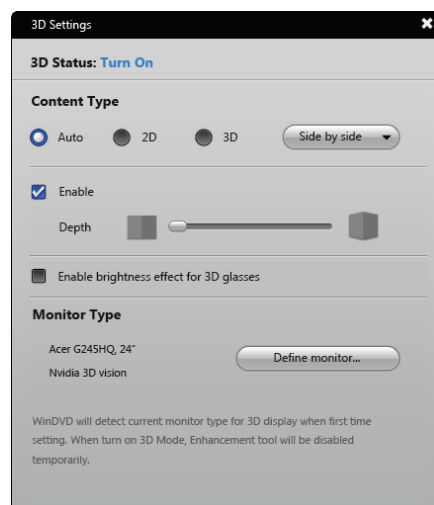
- 1 On the control bar ribbon, click the **Tools**  button and choose **Capture**.
The Capture panel appears above the control bar.
- 2 To capture a still image, click the **Capture**  button.
The captured image appears as a thumbnail in the Capture panel.
To share the image with friends, select it, and then click the **Mail**  button.
- 3 To record a quick clip, click the **Record**  button.
The recorded clip appears as a thumbnail in the Capture panel.
To share the clip with friends, select it, and then click the **Mail**  button.

Enhanced! Extensive file format support: WinDVD Pro 11 supports an array of popular video file formats and containers, ensuring you a crisp, vivid playback experience. Notable among the supported formats are DivX for Windows® 7, FLV, QuickTime®, Windows Media® (WMV), DVD-Video, AVCHD™, MTS, M2TS, MKV, MP4, and 3GP.

Outstanding Blu-ray™ and Blu-ray™ 3D support

WinDVD Pro 11 is a perfect solution for anyone who wants more than default operating system video players can provide. It offers 3D and HD upscaling technology, advanced Blu-ray and Blu-ray 3D support, and stunning surround sound configurations.

New! Make 2D videos appear in 3D: You can set WinDVD Pro 11 to automatically convert your 2D movies to 3D, which adds spectacular depth and realism to your viewing experience. By analyzing the color, position, and motion characteristics of 2D video, WinDVD Pro 11 can render the video in stereoscopic 3D. This feature supports 3D conversion for DVD-Video, and both HD and SD video.



The 3D Settings dialog box lets you adjust 3D conversion settings for 2D videos.

Give it a try

To configure 3D conversion settings

- 1 On the control bar ribbon, click the triangle beside the **3D 3D** icon.
In the 3D settings dialog box, the **3D Status** area displays **ON**.
- 2 In the **Content Type** area, choose one of the following options:
 - **Auto** – automatically detects 3D playback capabilities of a disc
 - **2D** – plays disc in 2D mode
 - **3D** – plays disc in 3D mode
- 3 To convert 2D videos to 3D on the fly, enable the **2D to 3D Conversion** check box.
- 4 In the **3D Depth** area, move the slider to adjust the depth of the 3D effect.

Enhanced! Advanced 3D and Blu-ray™ playback technology:

WinDVD Pro 11 is a dedicated Blu-ray Disc (BD) and Blu-ray 3D player that supports the latest advancements in 3D and Blu-ray technology. To ensure that you get the most out of your Blu-ray experience, WinDVD Pro 11 includes support for BD pop-up menus, BD-Live, BD-J, and digital audio output and mixing for BD-ROM discs.

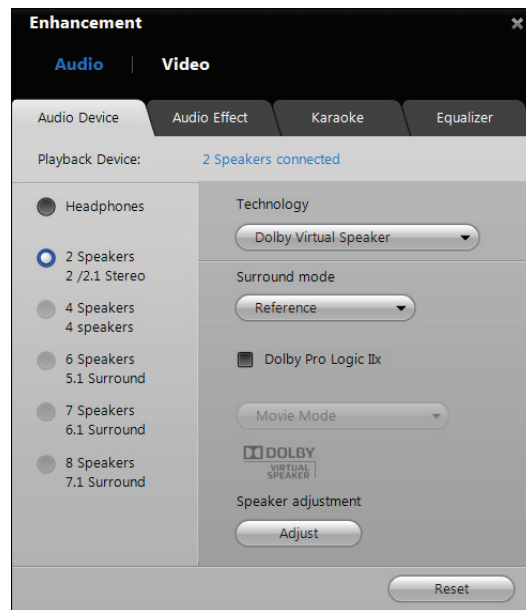
With BD-Live, you can take advantage of a truly interactive experience, with access to additional content, such as movie trailers and other special features. WinDVD Pro 11 also supports the playback of BDXL discs, the latest Blu-Ray format that provides up to 128GB of storage space. What's more, you can even choose your own accessories, with the included 3D glasses and support for both NVIDIA® 3D Vision™ Shutter Glasses and XpanD polarized glasses.



WinDVD Pro 11 supports a variety of the most recent 3D display technologies.

New & Enhanced! Cinematic surround sound: With WinDVD Pro 11, you'll experience outstanding surround sound that will make you feel the rumble of a jet overhead or the pitter-patter of rain falling all around you. Thanks to the enhanced interface, it's never been easier to optimize your sound and be blown away by a cinematic audio experience on your PC or laptop.


WinDVD Pro 11 includes support for a variety of audio filtering and noise reduction technologies, including Dolby® Headphone, Dolby® Pro Logic® IIz, Dolby® Virtual Speaker, and DTS® Neo:6. Plus, you can now play Karaoke DVD and VCD discs — sure to liven up your next get-together.



WinDVD Pro 11 auto-detects your audio setup and makes it easy to refine.

Give it a try

To access the audio options

- On the control bar ribbon, click the **Tools**  button and choose **Enhancements**.

By default, WinDVD Pro 11 will open the **Enhancements** dialog box to the **Audio** panel.

WinDVD Pro 11 automatically detects your audio capabilities and recommends the optimum settings.

About Corel

Corel is one of the world's top software companies, with more than 100 million active users in more than 75 countries. We develop software that helps people express their ideas and share their stories in more exciting, creative, and persuasive ways. Through the years, we've built a reputation for delivering innovative, trusted products that are easy to learn and use, helping people achieve new levels of productivity. The industry has responded with hundreds of awards for software innovation, design, and value.

Our award-winning product portfolio includes some of the world's most widely recognized and popular software brands, including CorelDRAW® Graphics Suite, Corel® Painter™, Corel DESIGNER® Technical Suite, Corel® PaintShop Photo® Pro, Corel® VideoStudio®, Corel® WinDVD®, Corel® WordPerfect® Office, WinZip®, and Corel® Digital Studio™. Our global headquarters are in Ottawa, Canada, and major offices are in the United States, the United Kingdom, Germany, China, Taiwan, and Japan.

Copyright 2011 Corel Corporation. All rights reserved.

Corel® WinDVD® Pro 11 Reviewer's Guide

Protected by patents in the United States and elsewhere.

Product specifications, pricing, packaging, technical support and information ("specifications") refer to the retail English version only. The specifications for all other versions (including other language versions) may vary.

INFORMATION IS PROVIDED BY COREL ON AN "AS IS" BASIS, WITHOUT ANY OTHER WARRANTIES OR CONDITIONS, EXPRESS OR IMPLIED, INCLUDING, BUT NOT LIMITED TO, WARRANTIES OF MERCHANTABILITY, SATISFACTORY QUALITY, MERCHANTABILITY OR FITNESS FOR A PARTICULAR PURPOSE, OR THOSE ARISING BY LAW, STATUTE, USAGE OF TRADE, COURSE OF DEALING OR OTHERWISE. THE ENTIRE RISK AS TO THE RESULTS OF THE INFORMATION PROVIDED OR ITS USE IS ASSUMED BY YOU. COREL SHALL HAVE NO LIABILITY TO YOU OR ANY OTHER PERSON OR ENTITY FOR ANY INDIRECT, INCIDENTAL, SPECIAL, OR CONSEQUENTIAL DAMAGES WHATSOEVER, INCLUDING, BUT NOT LIMITED TO, LOSS OF REVENUE OR PROFIT, LOST OR DAMAGED DATA OR OTHER COMMERCIAL OR ECONOMIC LOSS, EVEN IF COREL HAS BEEN ADVISED OF THE POSSIBILITY OF SUCH DAMAGES, OR THEY ARE FORESEEABLE. COREL IS ALSO NOT LIABLE FOR ANY CLAIMS MADE BY ANY THIRD PARTY. COREL'S MAXIMUM AGGREGATE LIABILITY TO YOU SHALL NOT EXCEED THE COSTS PAID BY YOU TO PURCHASE THE MATERIALS. SOME STATES/COUNTRIES DO NOT ALLOW EXCLUSIONS OR LIMITATIONS OF LIABILITY FOR CONSEQUENTIAL OR INCIDENTAL DAMAGES, SO THE ABOVE LIMITATIONS MAY NOT APPLY TO YOU.

Corel, the Balloon logo, the Corel logo, CorelDRAW, Corel DESIGNER, Digital Studio, Painter, PaintShop Photo, VideoStudio, WinDVD, WinZip, and WordPerfect are trademarks or registered trademarks of Corel Corporation and/or its subsidiaries in Canada, the U.S. and/or other countries.

All trademarks or registered trademarks are the property of their respective owners.

Corel® **WinDVD® Pro 11**

Media Contacts

Germany, Austria, Switzerland & Poland:

Tim Schade

Senior PR Manager, EMEA

tim.schade@corel.com

+44 1628 589849

UK, Benelux, Nordics & South Africa:

Chris Boba

EMEA PR Manager

chris.boba@corel.com

+44 1628 589845

France, Italy, Spain, Portugal & rest of EMEA:

Maria Di Martino

EMEA PR Manager

maria.dimartino@corel.com

+44 1628 589848

Asia Pacific:

Joy Tsai

APAC PR Manager

joy.tsai@corel.com

Tel: +886-2-26273777 ext. 6319



Corel Corporation
1600 Carling Ave.
Ottawa, ON
Canada K1Z 8R7

Corel UK Limited
Sapphire Court
Bell Street
Maidenhead
Berkshire SL6 1BU
United Kingdom

Corel TW Corp.
7F No. 399, Rueiguang Rd,
Neihu District, Taipei City
114, Taiwan