



COREL® **Photo Album™ 6**

Reviewer's Guide

Product specifications, pricing, packaging, technical support and information ("specifications") refer to the retail English version only. The specifications for all other versions (including other language versions) may vary.

INFORMATION IS PROVIDED BY COREL ON AN "AS IS" BASIS, WITHOUT ANY OTHER WARRANTIES OR CONDITIONS, EXPRESS OR IMPLIED, INCLUDING, BUT NOT LIMITED TO, WARRANTIES OF MERCHANTABILITY, QUALITY, SATISFACTORY QUALITY, MERCHANTABILITY OR FITNESS FOR A PARTICULAR PURPOSE, OR THOSE ARISING BY LAW, STATUTE, USAGE OF TRADE, COURSE OF DEALING OR OTHERWISE. THE ENTIRE RISK AS TO THE RESULTS OF THE INFORMATION PROVIDED OR ITS USE IS ASSUMED BY YOU. COREL SHALL HAVE NO LIABILITY TO YOU OR ANY OTHER PERSON OR ENTITY FOR ANY INDIRECT, INCIDENTAL, SPECIAL, OR CONSEQUENTIAL DAMAGES WHATSOEVER, INCLUDING, BUT NOT LIMITED TO, LOSS OF REVENUE OR PROFIT, LOST OR DAMAGED DATA OR OTHER COMMERCIAL OR ECONOMIC LOSS, EVEN IF COREL HAS BEEN ADVISED OF THE POSSIBILITY OF SUCH DAMAGES, OR THEY ARE FORESEEABLE. COREL IS ALSO NOT LIABLE FOR ANY CLAIMS MADE BY ANY THIRD PARTY. COREL'S MAXIMUM AGGREGATE LIABILITY TO YOU SHALL NOT EXCEED THE COSTS PAID BY YOU TO PURCHASE THE MATERIALS. SOME STATES/COUNTRIES DO NOT ALLOW EXCLUSIONS OR LIMITATIONS OF LIABILITY FOR CONSEQUENTIAL OR INCIDENTAL DAMAGES, SO THE ABOVE LIMITATIONS MAY NOT APPLY TO YOU.

© 2005 Corel Corporation. All rights reserved.

Corel, the Corel logo, CorelDRAW, Corel Painter, Corel Photo Album, PhotoSafe, Thinify, QuickCD, and WordPerfect are trademarks or registered trademarks of Corel Corporation and/or its subsidiaries in Canada, the U.S., and/or other countries. Microsoft, Outlook, and Windows are trademarks or registered trademarks of Microsoft Corporation in the United States and/or other countries. Macromedia Flash is a trademark of Macromedia, Inc. Pentium is a registered trademark of Intel Corporation or its subsidiaries in the US and other countries. PhotoRecovery is a trademark of LC Technology International, Inc. QuickTime and the QuickTime logo are trademarks used under license. The QuickTime logo is a registered trademark of Apple Computer, Inc. in the United States and other countries. Other product, font, and company names and logos may be trademarks or registered trademarks of their respective companies.

Contents

1 | Introducing Corel® Photo Album™ 6

The complete digital photo software package	1
Quick and easy	1
Secure	2

2 | What's included with Corel® Photo Album™ 6

Main Applications	3
Bonus Content	3
Printed Documentation	3
Electronic Documentation	3
System Requirements	3
Additional requirements for selected features	3

3 | Key Features

Capture, View, and Organize	5
Improve and Enhance	8
Create and Share	11
Backup and Protect	15

4 | Summary of New or Improved Features

5 | Corel Corporate Profile

1



Introducing Corel® Photo Album™ 6

Corel® Photo Album™ 6 is the complete digital photo software package, offering the broadest range of fast, simple features and automatic tools that help users unlock the magic of digital photography. Freed from the constraints of traditional film and processing, digital camera users are taking more pictures than ever before. Whether it's to record a family event, personal milestone, or just for the fun of capturing life's moments, digital camera users delight in the freedom and flexibility provided by digital photography.

With increasingly more photos being stored on computers, many digital camera users are starting to feel some anxiety about how to organize, store, and protect their rapidly growing photo collections. In addition, digital camera users may experience frustration with the limited options available to them from the software that's bundled with their cameras. Having discovered the joy of improving and enhancing their digital photos, they're soon left hungry for more creative options. And that's where Corel Photo Album 6 comes in.

The complete digital photo software package

Corel Photo Album 6 offers users the broadest range of tools to easily organize, enhance, share, showcase, and protect their digital photos. With new automatic photo management features, easy-to-use enhancement tools, and thousands of creative project templates that are drag and drop simple, users will spend less time tinkering with technology and more time simply enjoying their digital memories. To reduce the learning curve often associated with new software, Corel Photo Album also includes a Get Started Guide that introduces users to all that the application makes possible.

Quick and easy

By displaying logical tabs that direct users to the tools and features needed for the project at hand, the straightforward user interface (UI) of Corel Photo Album 6 ensures that users can complete tasks quickly. What's more, the automatic features provided by Corel Photo Album take care of the most common photo tasks, such as downloading, rotating, and organizing a photo collection, freeing up users to enjoy their photos more. And, with thousands of professionally-designed project templates, users can create impressive projects to showcase their photos within minutes of installing the software.

Secure

While the freedom and flexibility of digital photography make it possible to take more pictures than ever before, it also means that more and more photos are being stored on computer hard drives and memory cards. These photos are vulnerable to viruses, computer crashes, and memory failure, yet less than 50% of consumers have a definite plan for managing or protecting their digital photo collections¹.

Corel Photo Album 6 provides the following automated features to help users ensure that their photo collections are protected:

- The **PhotoSafe™ BackUp System** is a revolutionary feature that automatically backs up and protects all photos, and provides automatic reminders that give users peace of mind and confidence that every photo is safe.
- **PhotoRecovery®** software, a \$29 value included free with Corel Photo Album 6, provides users with even more confidence and peace of mind by making it easy to recover photos that were accidentally deleted from their memory card.



¹ InfoTrends, 2005

2



What's included with Corel® Photo Album™ 6

Main Applications

Corel Photo Album 6
PhotoRecovery
Pixmantec® RawShooter Essentials

Bonus Content

Paint Shop Xtras – Scrapbook Templates
Paint Shop Xtras – Scrapbook Templates Volume II

Printed Documentation

Printed User Guide

The User Guide offers step-by-step guidance for a variety of common photo management tasks, such as organizing, enhancing, sharing, showcasing, and protecting photos.

Electronic Documentation

Help file

The comprehensive Help file offers workflow-based instructions that help users complete a variety of common photo management tasks.

Get Started Guide

The Get Started Guide is an interactive feature that provides quick lessons on how Corel Photo Album 6 can help users to make the most of their photos.

System Requirements

- Pentium® II 400 MHz processor or equivalent
- Windows® 2000 or Windows XP
- 128 MB of computer RAM memory minimum (256 MB recommended)
- 150 MB of disk space for full install (50 MB for minimal install) plus 400 MB of temporary disk space during installation
- High Color (16-bit) display colors setting (True Color or 24/32-bit recommended)
- 800x600 or higher display screen area
- Microsoft® Internet Explorer 5.1 or higher (to access Help, Web galleries, and photo sharing Web sites)
- Macromedia Flash™ Player 7 or higher (included)

Additional requirements for selected features

- Outlook® Express or other MAPI-compliant e-mail software (to e-mail from the Corel Photo Album 6)
- QuickTime® 6 or greater (to handle movie files)
- DirectX® 9 (to burn CDs and VCDs)
- CD-R, CD-R/W, DVD-R, DVD-R/W drive (to create Video CDs, PhotoSafe archive CDs, and QuickCDs)
- Up to 1 GB free temporary hard drive space (to create Video CDs)

3



Key Features

Corel Photo Album 6 gives users the freedom to spend more time enjoying their photos by:

- *automatically downloading photos from a camera or card reader*
- *automatically rotating vertical photos*
- *automatically searching for photos and organizing them by date*
- *and letting users create photo to-do lists.*

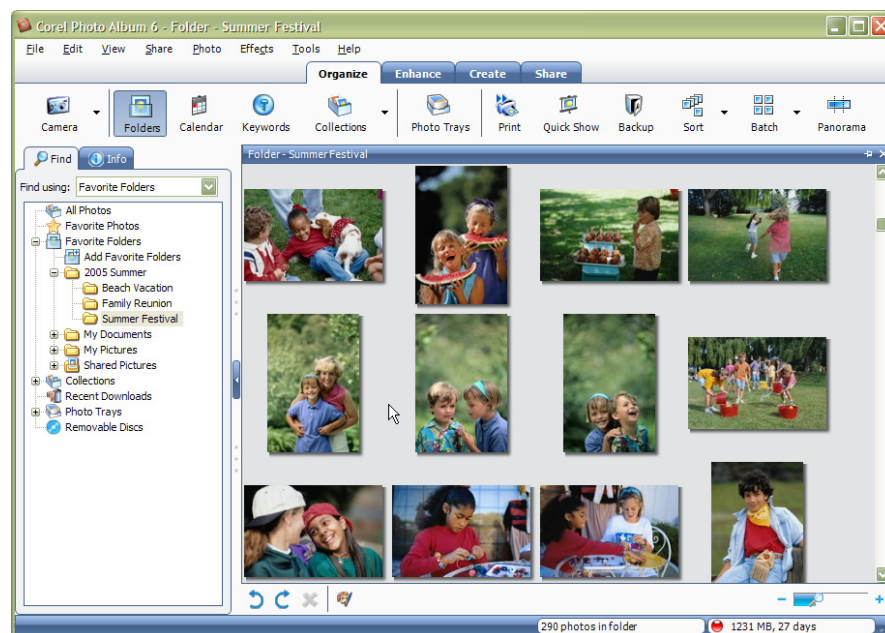
Corel Photo Album 6 is the complete photo software package for digital camera users who want to share life's moments with family and friends. It offers the broadest range of easy-to-use features for organizing, enhancing, sharing, showcasing, and protecting digital photo collections. In developing Corel Photo Album 6, Corel has focused on providing straightforward tools that automate the basic photo tasks, freeing users to spend more time simply enjoying their photos.

Capture, View, and Organize

With people taking more pictures than ever before, it's increasingly important that software provides users with tools to easily manage the digital photos that are stored on their computers. Corel Photo Album 6 introduces new, automated tools that make it quick and easy for digital camera users to organize their rapidly expanding digital photo collections.

The new **Corel Photo Downloader** springs into action as soon as the user plugs a digital camera or card reader into their computer. This time-saving utility automatically downloads and rotates photos, making it easier and faster for users to start enjoying their photos. In addition, the new **Photo Finder** automatically finds every photo on the computer and sorts them by the date that they were taken, instantly bringing order to any digital photo collection.

Corel Photo Album 6 also provides users with more intuitive, flexible options for viewing and organizing their photos. Users can choose to sort photos by using **Folders**, **Collections**, **Keywords**, **Favorite Photos**, **Calendar**, and more. In addition, the convenient **Zoom slider** lets users quickly adjust the size of thumbnail previews. Several other new automatic organization tools, such as **Photo Trays** and the **Recent Downloads** list, ensure complete flexibility while users effortlessly organize their photo collections.



New! Corel Photo Downloader

When a Corel Photo Album 6 user plugs a camera or card reader into their computer, the new Corel Photo Downloader automatically downloads photos. It also remembers which photos have already been downloaded, making it simple for users to keep track of the photos on both their camera and computer. In addition, vertical photos are automatically rotated for easy viewing with Corel Photo Album. And when the Corel Photo Downloader is finished, it prompts the user to choose a task to do next. What's more, the user can instruct the Corel Photo Downloader to perform the same steps every time that images are being downloaded, making it that much simpler to quickly transfer photos from cameras or memory cards onto the computer — without even clicking their mouse.

Give it a try:

Using Corel Photo Downloader

- 1 Use a USB cable to connect the camera or card reader to the computer.
- 2 In the **Corel Photo Downloader**, choose one of the following options:
 - **Start downloading all photos using Corel Photo Album** — creates a new folder and downloads your photos into Corel Photo Album
 - **Select and download photos using Corel Photo Album** — opens the Camera - PC Card window where you can select and download photos
 - **Take no action** — closes Corel Photo Downloader
- 3 Click **OK**.

Note: To enable automatic downloading, mark the **Always do this action** option.

New! Photo Finder

Corel Photo Album 6 automatically finds all the photos on the user's computer and organizes them by the date that they were taken. This new feature saves users time by continuously keeping their photo collection up-to-date.

New! All Photos View

To provide users with the utmost flexibility in photo management, the new All Photos View lets them browse their entire photo collection at once. When the All Photos View is selected, Corel Photo Album 6 gathers every photo from every folder on the user's computer.

Five viewing options

The convenient Find panel lets users choose from five viewing options, including Favorite Folders, All Folders, Calendar, Keywords, and Collections. Corel Photo Album offers the most flexibility, allowing users to view photos the way that they want. In addition, Corel Photo Album lets users easily adjust the size of the thumbnail previews of their photo collection. With the handy zoom slider, users can quickly zoom out to see the entire contents of a folder, or zoom in for a closer look at just one photo.

New! Favorite Photos




Corel Photo Album 6 lets users designate their favorite photos with a gold star so that personal favorites can be quickly and easily identified for use in special projects, for e-mailing, or for printing.

New! Photo Trays

The handy photo trays help users quickly gather and sort photos from various folders for e-mailing, printing, or uploading to a photo sharing Web site. As users browse their photo collections, photo trays can act as a photo to-do list, tagging photos for later e-mailing, printing, or uploading.

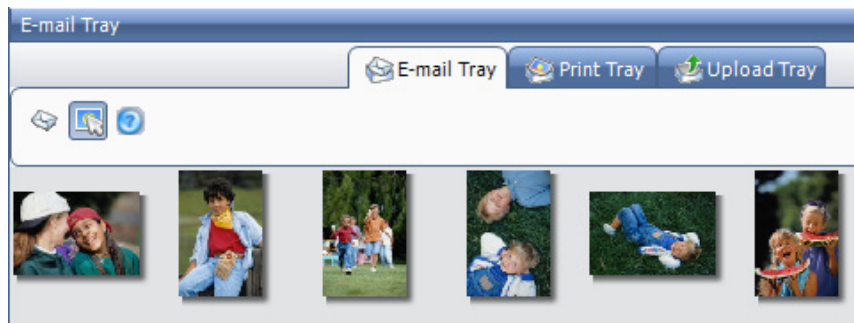
Give it a try:

Adding photos to the E-mail Tray

- 1 Click the **Organize** tab, and click the **Photo Trays**  button.
- 2 Click the **E-mail Tray** tab.
- 3 Click the **Choose Photos for E-mail Tray**  button.
- 4 Click a photo to add it to a photo tray.
- 5 When you've selected all the photos that you want to add, click the **Quick E-mail**  button.

If you want to complete the e-mail task at a later time, your photos remain in the tray until you are ready to send the e-mail.

- 6 In the Remove Photos From Tray Confirmation dialog box, choose one of the following options:
 - **Remove** — choose this option to remove photos from the tray
 - **Keep** — choose this option to keep photos in the tray for future useThe selected photos are automatically attached to an e-mail message.
- 7 Complete the **To**, **Subject**, and **Message** fields, and click **Send** to deliver the message.



New! Recent Downloads list

The Recent Downloads list automatically keeps track of the last 10 groups of photos downloaded to the user's computer so that they can quickly and easily locate their most recent snapshots.

New! Titles and Descriptions

Users can add titles and descriptions so that their photos stand out. Corel Photo Album now saves user captions to the International Press Telecommunications Council (IPTC) metadata so that the captions can be viewed and searched from within any program that supports IPTC.

Batch Rename

With Corel Photo Album 6, users can quickly change those cryptic, numeric filenames that digital cameras assign to photos. Using the Batch Rename feature, users can easily change the name of an individual image, several selected images, or an entire folder of images.

Keywords

Users can create and attach keywords to their photos to enable a unique, personalized organizational method. Keywords give users yet another option for managing and searching their digital photo collection.

Improve and Enhance

The transition from traditional film to digital images provides exciting new opportunities for digital camera users to have more control over their photos. With the straightforward editing and enhancement options provided by Corel Photo Album 6, users can quickly make bad photos look good and good photos look great.

With three powerful, yet simple options, users can quickly correct the color, contrast, and sharpness of their photos. In addition, users can remove distracting red eye from their photo subjects with just one click. Corel Photo Album 6 also provides fun frames and photo edges so that users can instantly enhance their photos.

Quick Fix



With Corel Photo Album 6, there's no quicker or easier way to fix photos. With just one click, users can auto-correct the color, contrast, and brightness of their photos.

Corel Photo Album 6 provides an array of user-friendly tools to improve and enhance photos, including:

- *three ways to fix color, contrast, and brightness*
- *simple and fast tools for adding special effects and finishing touches*
- *extra creative effects, such as Panorama and Thinify for having fun.*

Give it a try:

Quick Fix

- 1 Double-click the photo that you want to fix. This will open the **Enhance** toolbar and enlarge the photo for editing.
- 2 Click the **Quick-Fix**  button.
- 3 If you are not satisfied with the results of the Quick Fix, click the **Undo**  button.
- 4 To save the changes, choose **File ► Save**.



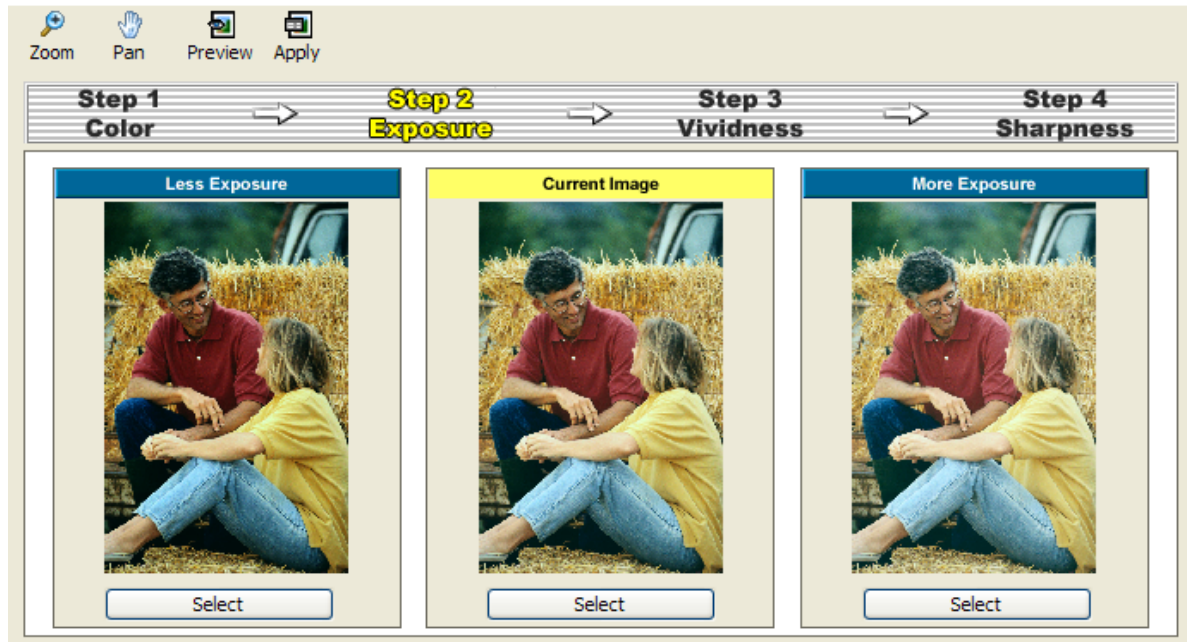
Before



After

Adjust wizard

The Adjust wizard is a step-by-step guide that gives users more control over photo corrections and lets them preview the results of a correction before committing to it.



Adjust

The Adjust command provides simple sliders to give users complete control over a variety of settings for correcting photos. With the Add Flash tool, users can even brighten just the shadowy areas of an image.

Red-Eye

With Corel Photo Album 6, users can remove red-eye with one click or they can use the Advanced Red-Eye tool for more precision and control.

Crop

Users can focus their attention on what's important by cropping to standard photo sizes, even crop a group of photos to 4x6 all at once.

Black & White and Sepia tools

Corel Photo Album 6 lets users transform their color photos into black and white, and sepia tones with just one click. These quick commands are useful for giving new photos a vintage look.

Thinify™

The Thinify command lets users give the subjects in their photos a thinner appearance with just a few clicks.

Panorama






The Panorama command lets users stitch together several photos. This is particularly useful for capturing large landscapes.

Picture Frames and Photo Edges

Corel Photo Album 6 provides users with a wide selection of picture frames and photo edges to personalize photos with elegant finishing touches.

Give it a try:

Enhancing a photo

- 1 Double-click the thumbnail preview of the photo that you want to use. This will open the **Enhance** toolbar and enlarge the photo for editing.
- 2 Click the **Sepia**  or **B & W**  button to give the photo a vintage look.
- 3 Click the **Edge**  button.
- 4 In the Add Photo Edge dialog box, choose a photo edge, and click **OK**.
- 5 Click the **Frame**  button.
- 6 In the Add Picture Frame dialog box, choose a picture frame, and click **OK**.
- 7 Click the **Save As**  button to save your keepsake and preserve the original photo.
- 8 In the Save Photo dialog box, type a name for your photo in the **File-name** field, choose a file type from the **Save as type** drop-list, and click **OK**.



Before



Converted black & white



With a photo edge and a frame

Corel Photo Album 6 provides a wealth of stylish Photo Projects that are quick and easy, including:

- *fun Collages, Magazine Covers, and Award Certificates that users can create simply by dragging and dropping photos into templates*
- *thousands of templates for scrapbook pages to ensure that users will never run out of creative options*
- *powerful tools that let users zoom in and out of photos, and move images within a template to get the exact look they want.*

Create and Share

From sharing photos by e-mail, hard copy, or CD to creating screen savers, multimedia slide shows, and Web galleries, Corel Photo Album 6 makes it easy to share life's special moments with family and friends. With drag and drop simplicity, users can choose from thousands of professionally-designed templates to showcase their photos in a variety of fun projects, such as album pages, magazine covers, collages, calendars, e-cards, greeting cards, and more.

New! Quick Print

The new Quick Print command makes printing photos faster and easier by remembering the user's favorite print settings.

Print Layout

With more than 40 print layout templates, Corel Photo Album 6 helps users make the most of expensive photo paper. Users can choose to print standard photo sizes, such as 8x10, 5x7, wallet-sized, and more. Print layouts also let users combine multiple photos on one page.



E-mail and Quick E-mail

The Quick E-mail and E-mail commands make it easy to send photos to friends and family. Quick E-mail automatically attaches the selected image to a new message in the user's e-mail program. All the user has to do is add the recipient address and fill in the subject line. With E-mail, users can adjust settings to optimize the photos for quick recipient downloading.

Photo projects

Corel Photo Album 6 provides a multitude of creative templates that inspire users to do more with their photos. With drag and drop simplicity, users can create award certificates, album pages, greeting cards, calendars, CD labels, e-cards, magazine covers, and more. Users can even move, rotate, and zoom in and out of photos within a template to get the exact look that they want.



New! Magazine Covers

With these fun new templates, users can take photos of themselves, their friends, or their family and put them on the cover of their own magazine.

New! Award Certificates


Celebrate successes by using these new templates to create award certificates for sporting events, musical recitals, and any other special achievement that deserves acknowledgment.

Hard Cover Photo Books and Online Photo Sharing

Users can upload their favorite photos to popular online photo sharing Web sites, such as Shutterfly, Ofoto, and PhotoBox (UK), and create stunning hard cover photo albums, mugs, t-shirts, or other photo keepsakes to share with their family and friends. Users can also order convenient prints for photo sharing Web sites.

Give it a try:

Making a Greeting Card

- 1 Click the **Create** tab, and click **Greeting Card**.
- 2 On the **Settings** panel, choose one of the following options from the **Style** drop-list:
 - **Double-Fold Card**
 - **Single-Fold Card**
- 3 On the **Settings** panel, select a **Layout** from the list.
- 4 From the Photo Strip on the right side of the application window, drag and drop the photo that you want to use onto your greeting card. The Photo Strip will be labeled with the name of the currently selected folder.
- 5 To add text or captions, click in the **Click to Add Text** box on your greeting card.
- 6 On the **Settings** panel, choose a **Font**, **Font Style**, **Size**, and **Color**, and type your text in the **Text** area.
The front of your card is now complete. To add text to the inside of your card, click the **Show next page**  button and follow steps 5 and 6 to add text.
- 7 To save your greeting card, click **Save**.
- 8 To print your greeting card, click **Print**.
When the first page prints, Corel Photo Album will pause printing to allow you to flip the page.

New! Collages

The new Collage project templates let users display a collection of photos in stylish and sophisticated collages. Users just select a collage layout template and drag and drop photos from their folders into the collage.

Give it a try:

Creating a Collage

- 1 Select the photos or folder that you want to use to create a collage.
- 2 Click the **Create** tab, and click **Collage**.
Thumbnail previews of the collage layouts display in the Settings panel.
- 3 On the **Settings** panel, select a **Style** and a **Layout** for your collage.
- 4 From the Photo Strip on the right side of the application window, drag and drop photos onto your collage. The Photo Strip will be labeled with the name of the currently selected folder.
- 5 To save your project, click **Save**.
- 6 To print your project, click **Print**.



Slide Shows

With Corel Photo Album 6, users can easily create musical slide shows to distribute to friends and family using e-mail, or simply to display on their computer. Users can also burn slide shows to Video CDs, which can be viewed on a TV using a DVD player. Now, it's quick and easy to share photos from a recent vacation, family event, or party.

Web Sharing


Web Galleries let users create their own customized Web page using Corel Photo Album, or users can quickly upload to their favorite photo sharing Web site.

QuickCD™

To help users backup their important photo memories, Corel Photo Album 6 lets them burn photos to CD with just two clicks. The user simply selects the photos that they want to burn to CD and clicks QuickCD.

Give it a try:

Burning a QuickCD

- 1 Select the photos or folder that you want to burn to CD.
- 2 Click the **Share** tab, and click the **QuickCD**  button.
Based on your hardware configuration, Corel Photo Album automatically chooses the optimum speed for burning the CD.
- 3 In the QuickCD dialog box, click **Burn**.



Corel Photo Album 6 makes protecting photos effortless by providing automatic features, such as:

- *the PhotoSafe Backup System that automatically keeps track of which photos need to be archived*
- *PhotoSafe Backup reminders that tell users when it's time to back-up photos*
- *and PhotoSafe Backup CDs that users can create with only two clicks.*

Backup and Protect

In the age of digital photography, the hard drive has replaced the shoe box. Most digital camera owners likely have a substantial collection of digital memories stored on their computer. They may not realize that storing photos on a computer leaves the photos vulnerable to computer crashes, viruses, and even theft.

With just a few clicks, Corel Photo Album 6 makes backing up photo collections on CD or DVD quick and easy. And there's no need to purchase any additional software. The intuitive PhotoSafe Backup System even reminds users when they need to backup their photos, ensuring that precious memories are protected.

PhotoSafe™ Backup System

The PhotoSafe Backup System helps users backup all of their photos onto CD or DVD. Archiving prevents the loss of valuable photos from hardware memory failure, or other computer mishaps, such as viruses. And PhotoSafe makes it simple by remembering which photos have already been backed-up on CD, and which photos are new.

PhotoSafe™ Backup reminders


Corel Photo Album 6 provides PhotoSafe Backup reminders that let users know when they should backup their photo collection. Located on the application's status bar, the PhotoSafe Backup reminder calculates the total file size of new photos in the user's collection and indicates when the user last created a PhotoSafe Backup CD.

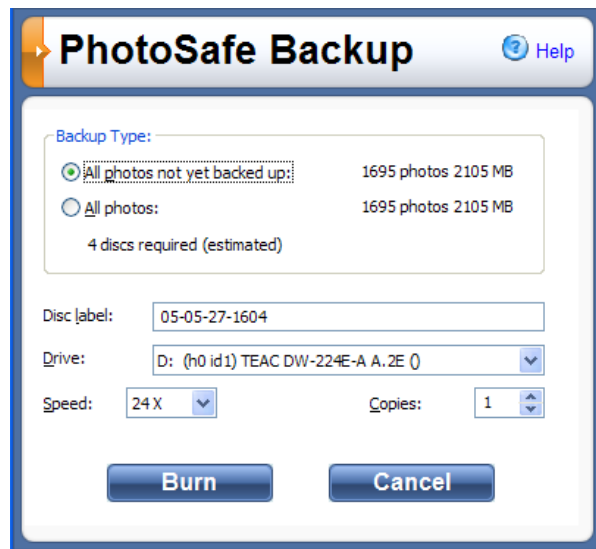
PhotoSafe™ Backup CD

Without having to purchase additional software, users can quickly and easily burn a PhotoSafe Backup CD. After creating a PhotoSafe Backup CD, users can access the photos it contains using the Favorite Folders view on the Find panel. Generally, one PhotoSafe Backup CD can store up to 700 MB of data.

Give it a try:

Burning a PhotoSafe™ Backup CD

- 1 Click the **Organize** tab, and click the **Backup**  button.
- 2 In the **Backup Type** group box of the PhotoSafe Backup dialog box, choose one of the following options:
 - **All photos not yet backed up**
 - **All photos**
- 3 Type a name for your backup CD in the **Disc label** field.
- 4 Click **Burn**.



PhotoRecovery®

PhotoRecovery is a straightforward application that recovers images, movies, and sound files from all types of digital media. Whether it's Memory Sticks, SmartMedia, CompactFlash, Micro-Drives, Secure Digital Cards, Multimedia Chips, or floppy disks and most other forms of digital film, users simply insert their digital film into the reader, and run PhotoRecovery. Pictures are instantly saved to their computer. There is no easier way to salvage those once in a lifetime moments thought to have been lost forever.

4



Summary of New or Improved Features

- The new **Corel Photo Downloader** automatically downloads photos when users plug a camera or card reader into their computer. It also remembers which photos have been downloaded, and automatically rotates vertical photos for viewing.
- With its new **Photo Finder**, Corel Photo Album 6 will automatically find all the photos on the user's computer and organize them by date.
- The **Find** panel gives users Five Viewing options, including Favorite Folders, All Folders, Calendar, Keywords, All Photos, or Collections. Users can also easily adjust the size of the thumbnail previews of their photo collection.
- Corel Photo Album 6 lets users mark their **Favorite Photos** with a gold star for easy identification.
- The new **Photo Trays** help users keep track of their photo to-do list by tagging photos for future e-mailing, printing, or uploading to a photo sharing Web site.
- Users can quickly and easily find their most recent photos using the **Recent Downloads** list that automatically keeps track of the last 10 photos downloaded to their computer.
- To make printing faster and easier, the new **Quick Print** feature remembers the user's favorite print settings.
- Users can now drag and drop their favorite photos into new photo projects, such as **Magazine Covers** and **Awards Certificates**.
- The new **Collages** project templates make it easy for users to display a collection of photos in stylish and sophisticated collages.
- With thousands of **Creative Project Templates**, users will never run out of possibilities for showcasing their photos. With these powerful projects, users can now dynamically zoom and move pictures within a template to get just the look they want.

5



Corel Corporate Profile

Corel Corporation provides innovative software solutions that help millions of value-conscious businesses and consumers in more than 75 countries improve their productivity. The company is renowned for its powerful software portfolio, which combines innovative photo-editing, graphics-creation, vector-illustration, and technical-graphics applications with office and personal productivity solutions. Corel's flagship products include the CorelDRAW® Graphics Suite, the WordPerfect® Office suite, Corel® Painter™ Natural-Media® painting and illustration software, and the Paint Shop™ family of digital photography and image-editing software. For more information, please visit www.corel.com.

Media Contact North America

Catherine Hughes
PR Manager, Paint Shop Product Line
Corel Corporation
613-728-0826 Ext. 1659
catherine.hughes@corel.com

Media Contact EMEA & APAC

Deborah Thomas
PR Manager, EMEA & APAC
Corel UK Limited
+44 (0) 1628 589850
deborah.thomas@corel.com

COREL®
Photo Album 6™

COREL®
www.corel.com

Corel Corporation
1600 Carling Ave.
Ottawa, ON
Canada K1Z 8R7

Corel UK Limited
Sapphire Court
Bell Street
Maidenhead
Berkshire SL6 1BU
United Kingdom

Corel Minneapolis,
Paint Shop Pro
7905 Fuller Road
Eden Prairie, MN
55344 USA