

Quick Start Guide for Converting Video to Mobile Devices


Corel® DVD Copy™ is a powerful tool for converting video files into a wide variety of standard and high-definition formats. This Quick Start Guide will show you how to convert your videos for playback on popular cell phones, PDAs, and smart devices.



Convert videos in 3 easy steps!


Open DVD Copy™ 6, click  **Convert File**. Select **Convert to CellPhone**, **Convert to iPhone™**, or **Convert to iPod®**, depending on your output device.

Step 1: Add source

Add the video files that you want to convert. To do this, click the  **Add video from local** button.

The **Add Video File** dialog box appears. Locate and select your video files and then click **Open**. Thumbnails of your videos are added in **Source**.


Step 2: Choose target

In **Target**, click  **Browse Target** to select the location where your video will be copied.

Step 3: Set output quality

In **Profile**, click the down arrow to select the format/bitrate/screen resolution to set the quality of your video.



Click **Start Copying**  to start converting the video.

Converting to iPod touch™, iPhone™ and iPod nano®

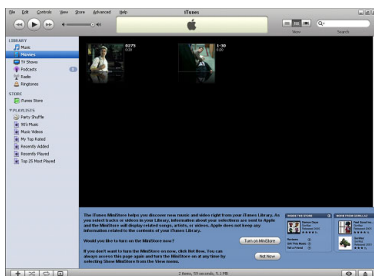
Here is how to convert video to **iPod touch™**, **iPhone™**, and **iPod nano®** supported formats and transfer them to your device using **iTunes®**.

Follow the 3 easy steps...

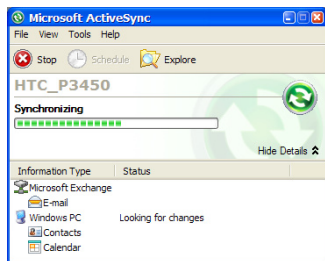
For **iPod touch™** and **iPhone™**, select **Convert to iPhone™**. For **iPod nano®**, select **Convert to iPod®** and set the location in your local drive where your video will be copied.

To transfer converted video to iPod touch™, iPhone™, or iPod nano®:

1. Connect your device to your computer.
2. Run **iTunes®** version 7 or above.
3. Import the converted files from your **Target** location to **iTunes®** and transfer them to your **iPod touch™**, **iPhone™**, or **iPod nano®**.



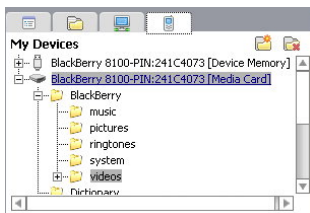
Converting to Windows Mobile® devices



When converting to **Windows Mobile®** devices, select **Convert to Zune™** and choose the following formats: WMV 320x240 for 4:3 video and 320x176 for 16:9 video. Use **Microsoft® ActiveSync®** to add the video to the device.

Converting to BlackBerry®

For BlackBerry® users, you can convert and transfer video to the smartphone Device Memory or Media Card for playback. Before you begin, connect your BlackBerry® to your PC USB port.



Follow the 3 easy steps...

For BlackBerry®, select **Convert to CellPhone**. Since BlackBerry® also supports playback of MPEG4, you can also select other devices that support MPEG4 (Profile) as your output device.

You can then use the **BlackBerry® Desktop Manager\Media Manager** to add your target video to the BlackBerry® Device Memory or Media Card.



Converting to Palm® Treo™

Here is how to convert video for viewing in your Treo™:



Before you begin, insert your Treo™ memory card into a card reader and plug it into a USB port on your PC. Your card will be detected as a removable drive.

Follow the 3 easy steps...

For Treo™, select **Convert to CellPhone** and set your Treo™ memory card as the target location.

Additional video formats

DVD Copy™ 6 supports conversion of video to the most popular mobile devices including iPhone™, iPod®, Zune™, PSP®, and more. You'll find the most popular mobile devices located in the DVD Copy™ 6 interface. While Corel does not guarantee support for all mobile devices, you can find a list of additional video formats for mobile devices at www.corel.com. If you are unable to determine the format for your mobile device, please contact the mobile device manufacturer.

Copyright

Copyright © 2007 Corel Inc. All Rights Reserved. Corel, the Corel logo, Ulead, InterVideo, DVD Copy 6 and WinDVD are trademarks or registered trademarks of Corel Corporation and/or its subsidiaries. Intel, Pentium, the Intel logo, Intel Core, and Core Inside are trademarks of Intel Corporation in the U.S. and other countries. Microsoft, Windows XP, DirectX, Windows Vista, Windows Vista Start button, Zune, Windows Mobile, ActiveSync and other Microsoft products referenced herein are either trademarks or registered trademarks of Microsoft Corporation in the United States and/or other countries. Apple, iPod, iPhone, iPod touch, iPod nano, iTunes, QuickTime and the QuickTime logo are trademarks of Apple Computer, Inc., registered in the United States and other countries. QuickTime and the QuickTime logo are trademarks used under license. Dolby and Double-D symbol are trademarks of Dolby Laboratories. PSP (PlayStation Portable) is trademark or registered trademark of Sony Computer Entertainment Inc. or its affiliates. AVCHD and AVCHD logo are trademarks of Matsushita Electric Industrial Co., Ltd and Sony Corporation. The AMD, AMD Athlon, and combinations thereof, are trademarks of Advanced Micro Devices, Inc. TiVo is a registered trademark of TiVo Inc. LightScribe is a registered trademark of the Hewlett-Packard Development Company, L.P. Memory Stick is a registered trademark of Sony Corporation. DivX, DivX Ultra and associated logos are trademarks of DivX, Inc. and are used under license. BlackBerry is a registered trademark of Research In Motion Limited. Palm and Treo are trademarks or registered trademarks of Palm, Inc. All other product names and any registered and unregistered trademarks mentioned are used for identification purpose only and remain the exclusive property of their respective owners.

Warning: You may use this software in copying material in which you own the copyright or have obtained permission to copy from the copyright owner. If you do not own the copyright or you have not obtained permission to copy from the copyright owner, you may be violating copyright law and you may be subject to claims for damages and/or criminal penalties.