



Jasc®

Paint Shop™

Photo Album™

4

Everything you need to enhance, organize, and share digital photos

Creating a Photo Keepsake

In this tutorial you'll learn how to create a beautiful keepsake from a color digital photo. The image used in this tutorial needs some corrections, so first you'll crop the image and lighten the image by adding more camera flash. Then you'll convert the image to a black and white, and add a photo edge. The before and after images are shown below:

Before



After



You will complete the following tasks:

- Open the image Wedding.jpg used in this tutorial
- Crop the image
- Correct the background lighting by adding a flash
- Convert the image to black and white
- Add a Photo Edge


Open the Image

It is recommended that you complete this tutorial with the sample image used in this tutorial. However, You can use your own image if you choose.

- 1 In this tutorial you will use the image file called **Wedding.jpg**.
- 2 If you haven't already downloaded the file, you can download it from the Learning Center at www.Jasc.com.
- 3 Open this file in Photo Album.
- 4 Double-click the image to open it in the Image View window.

Crop the Image

This image would look a lot better if we cropped the image to focus the image on the couple.

- 1 In the Image View window, click the **Crop** button  on the toolbar. The Crop window opens on top of the image.
- 2 Center the Crop window on the couple, then drag the sides of the Crop window to remove the woman on the left side of the photo, as shown below:



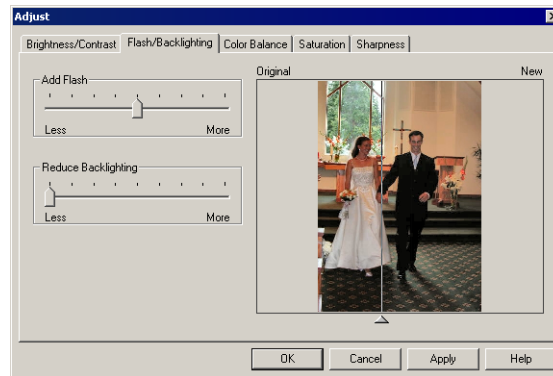
- 3 Click **OK** to crop the image.

Correct the Image

This image is a little dark, so we'll add a flash to lighten the image before we convert it to black and white.

- 1 Choose **Image > Adjust** to open the Adjust dialog.
- 2 Click the **Flash/Backlighting** tab.

- 3 Drag the Add Flash slider to the center, as shown below:

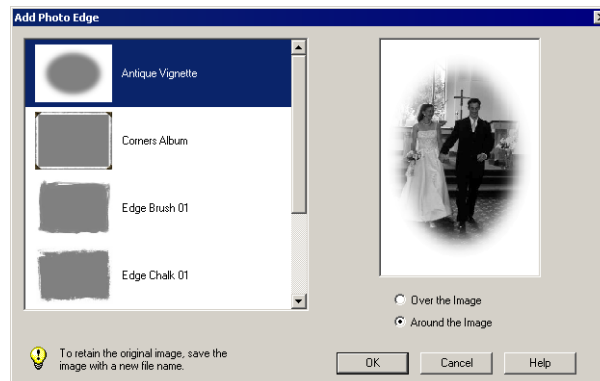


- 4 Click **OK** to add the flash to the image and close the Adjust dialog.

Convert the Image to Black and White and Add a Photo Edge

The final steps in making a photo keepsake are to convert the image to black and white and add a photo edge.

- 1 Choose **Effects > Convert to Black and White** to automatically convert the image to black and white.
- 2 Choose **Effects > Add Photo Edge** to open the Add Photo Edge dialog, shown below:



- 3 Click the photo edge called **Antique Vignette**. A preview of the image is shown on the right side of the dialog.
- 4 Click the **Around the Image** option to get the best effect for this photo edge.

5 Click **OK** to apply the photo edge to the image. The final image is shown below:

