

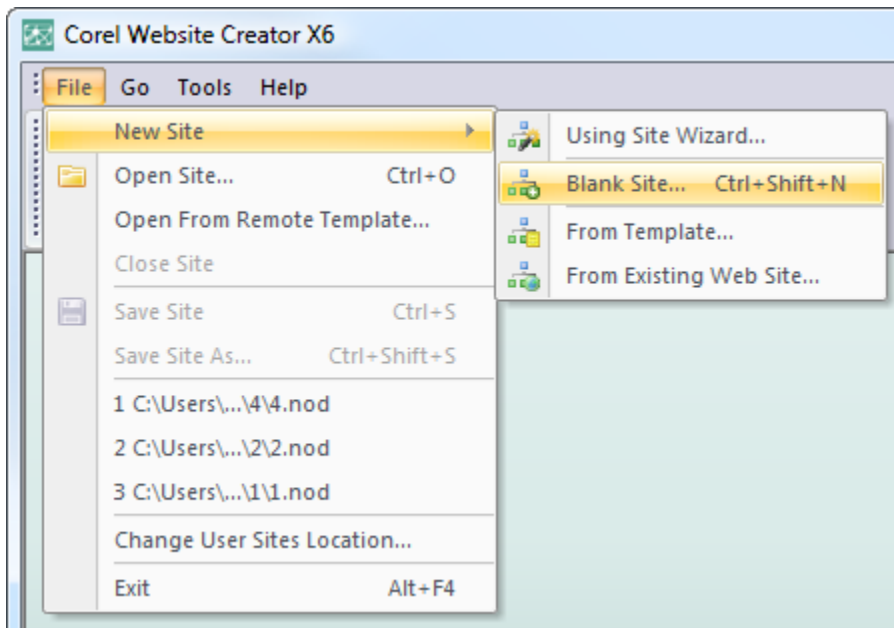
Embedding Videos from YouTube

Social media sites have exploded over the last few years. Incorporating these channels into your Website is an important part of your web presence. This tutorial will outline how to embed a video from youtube.com into your own Website.

Difficulty – **Novice**

Preparation

From the File menu, select New Site > Blank Site.



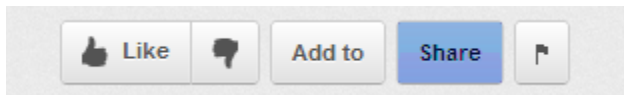
Name your site youtube.

Step 1

Locate a video you wish to embed into your Website, for this tutorial any video will be fine.

Step 2



On the video page you will notice the Share options under the user account information.



Step 3

Use your mouse to select the code provided in the Embed field. Notice that customization options automatically open when the code is selected.

Share with playlist starting from **current video** start of playlist

Embed **Email**   **More**

Options ▾


```
<iframe width="420" height="315"
src="http://www.youtube.com/embed/
frameborder="0" allowfullscreen></iframe>
```

After making your selection, copy and paste the embed code above. The code changes based on your selection.

Show suggested videos when the video finishes
 Use HTTPS [?]
 Enable privacy-enhanced mode [?]
 Use old embed code [?]

420 × 315 480 × 360 640 × 480 960 × 720 Custom

Width: px
Height: px



Step 4

We will be using the default code but feel free to customize the options here. Any selections or changes made will automatically update the code provided by youtube.

Step 5

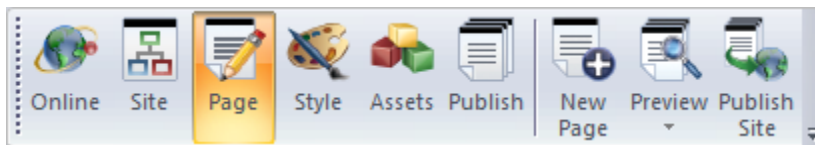
Copy the code provided by youtube.

Step 6

Switch back to Corel Website Creator X6.

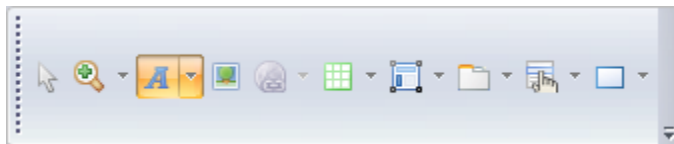
Step 7

Navigate to the Page view by selecting the Page view from the View bar.



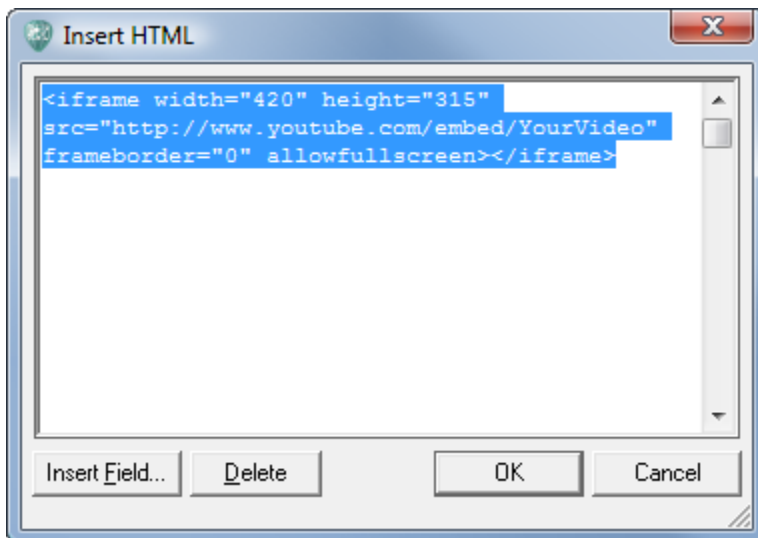
Step 8

In the Layout area of your Website, draw a text box. The text object is located in the Standard toolbar.



Step 9

Click inside the text box and click Ctrl+T. The Custom HTML Insertion dialog windows will appear. In the Custom HTML Insertion dialog window, right click and select Paste or click Ctrl+V. Then click OK.



Step 10

The text box will now have a blue circle with a T. This icon means that the text box has HTML inserted.



Step 11

You can move this text box anywhere in your page by dragging it. Preview your site to view your video.

Wrapping Up

We have learned how to include videos from the social media Website YouTube. Including video is a great way to provide dynamic content to your Website visitors.