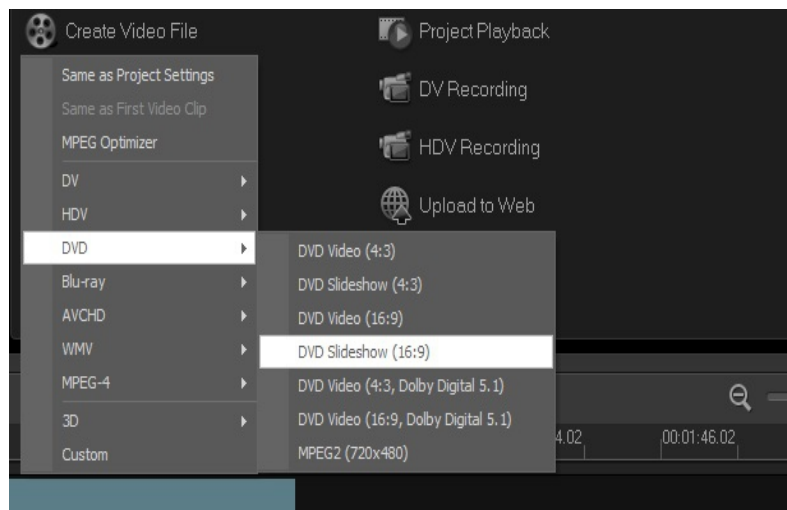


## Creating custom a slideshow using in Corel® VideoStudio® Pro X5

In this tutorial, we'll look at creating a quick and simple photo slideshow with transition, pan, and zoom effects.



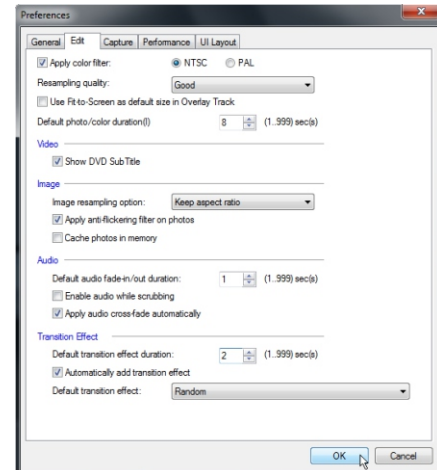
### What you will learn:

- Adjusting project settings
- Gathering content for the slideshow
- Customizing transition effects
- Exporting the project as a DVD slideshow

## Adjusting settings

Before starting the project, change a few default settings.

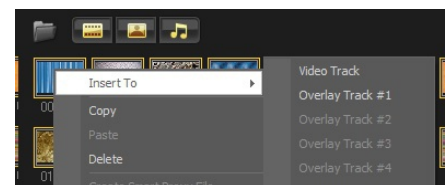
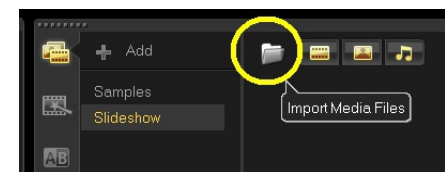
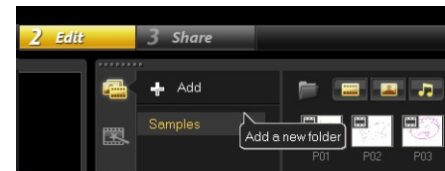
1. Click **Settings** menu ► **Preferences**.
2. Click the **Edit** tab.
3. Set the **Default photo/color duration** control to 8.  
The default duration is 3 seconds, but for this tutorial, the duration of each image is 8 seconds.
4. Set the **Default transition effect duration** control to 2.
5. Check the **Automatically add transition effect** option box.
6. Click on **OK** to apply the changes.



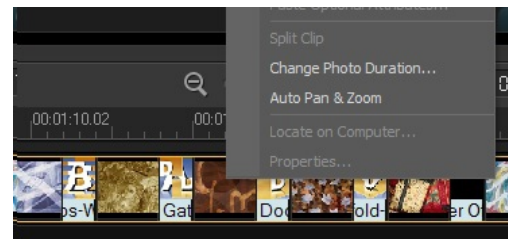
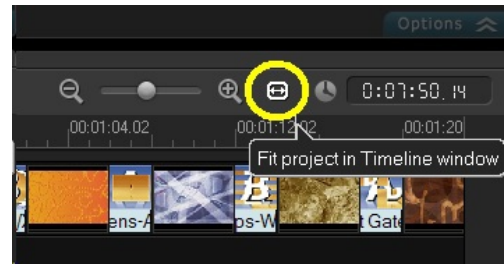
## Gathering content

Now, add the slideshow content.

1. Click the **Show Library Panel Navigation** button ►►.
2. Click the **Add a new folder** button, and name the folder **Slideshow**.
3. Click the **Import Media Files** button.  
The Browse media files dialog box appears.
4. Select images to include in the slideshow, and click **OK**.  
Thumbnails of the images appear in the **Slideshow** folder.
5. Position your cursor over a thumbnail, right-click, and choose **Insert To ► Video Track**.

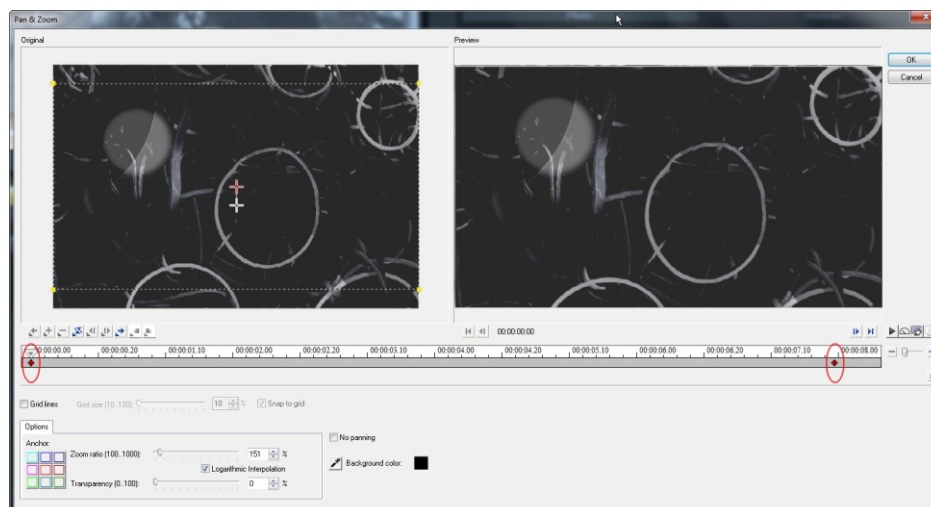
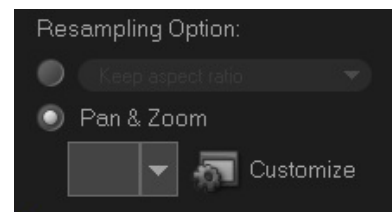


- On the Toolbar, click the **Fit project in Timeline window** button.  
Corel VideoStudio Pro X5 applies the set clip duration and randomized transition effects to the images.
- Click the Video Track, press **Ctrl** key + **A** to select all the images.
- Right-click any image in the Video Track, and choose **Auto Pan & Zoom**.  
Corel VideoStudio Pro X5 applies randomized pan and zoom effects to the images.



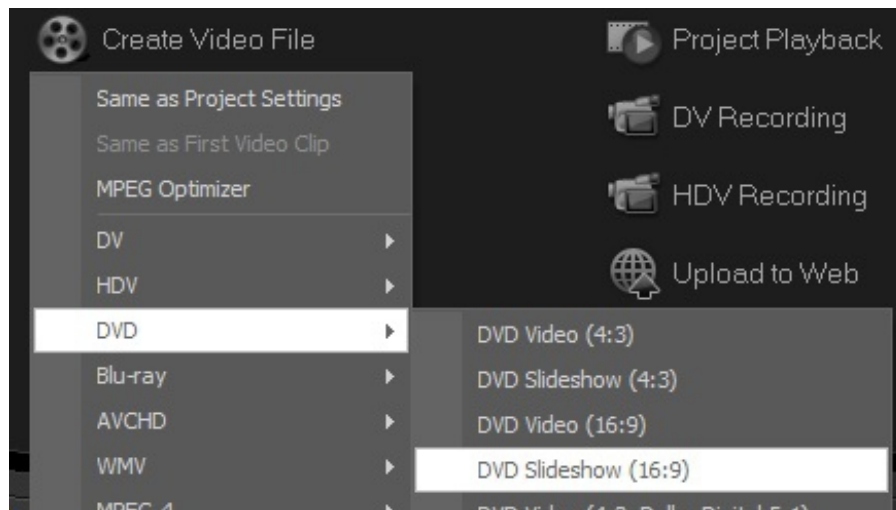
## Customizing the applied effects

- Right-click any image in the Video Track, and choose **Open Options Panel**.
- In the Options panel, click **Customize**.  
The Pan & Zoom dialog box appears.
- Adjust the starting and ending keyframes to customize the Pan & Zoom effect.
- Click **OK**.



## Exporting the project as a DVD slideshow

1. Click the **Share** tab to open the Share step panel.
2. Click **Create Video File**, and choose **DVD Slideshow (4:3)** or **DVD Slideshow (16:9)**.
3. In the Create Video File dialog box, name the slideshow, and click **Save**.



If you enjoyed this tutorial, be sure to check out the other tutorials that are available in the Discovery Center. If you have any ideas for additional tutorials or projects that you would like to see in the future, email [Discovery.Center@corel.com](mailto:Discovery.Center@corel.com).