

## Turning a photo into a work of art in Corel® Paint Shop™ Pro X4

In this tutorial, we'll look at turning a simple photo into an interesting work of art using the Fill Light/Clarity filter, Local Tone Mapping, and picture frames.



### What you will learn:

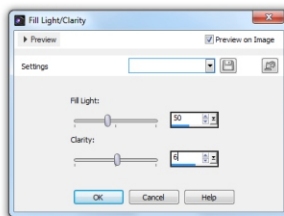
- What is the Fill Light/Clarity filter?
- Applying the Fill Light/Clarity filter
- Adding clarity using Local Tone Mapping
- Adding a picture frame

## What is the Fill Light/Clarity filter?

The Fill Light/Clarity filter simplifies brightening shadows or darkening light areas without affecting other portions of the image. You can fine-tune the brightness and clarity of underexposed photos or shots taken in low-light conditions to sharpen subtle yet important details.

## Applying the Fill Light/Clarity filter

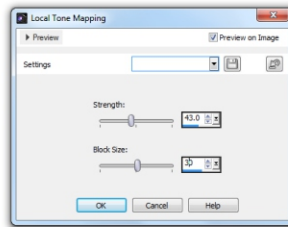
1. Open an image you want to work on.
2. In the Edit workspace, choose **Adjust ▶ Brightness and Contrast ▶ Fill Light/Clarity**. The Fill Light/Clarity dialog box appears.
3. Type or set a value in the **Fill Light** control.  
A positive number lightens the darkest areas of the photo; a negative number darkens the light areas of the photo. A value of zero preserves the original setting.
4. Type or set a value in the **Clarity** control.  
A positive number increases detail; a negative number decreases detail and focus. A value of zero preserves the original setting.
5. Click **OK**.



## Adding clarity using Local Tone Mapping

To add further depth and clarity to the image you can adjust the tone curve of the image using the Local Tone Mapping feature.

1. Choose **Adjust ▶ Brightness and Contrast ▶ Local Tone Mapping**.  
The Local Tone Mapping dialog box appears.
2. Type or set a value in the **Strength** control.  
Use the smallest value that produces a satisfying result. Values that are too high cause unwanted artifacts to appear in the photo.
3. Click **OK**.

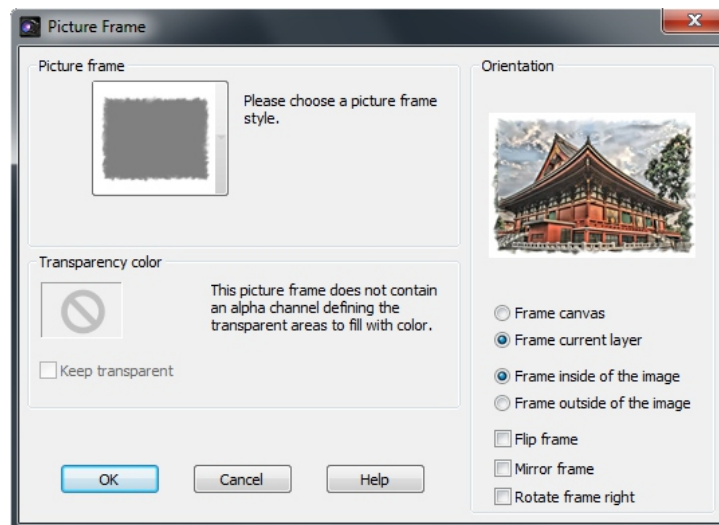


This is a great way to adjust the depth of an image and really bring out the color saturation after brightening a photo using the Fill Light/Clarity filter.

## Adding a picture frame

To truly transform an image into a work of art, you can add a border or picture frame around it. Corel® PaintShop™ Pro X4 offers dozens of picture frame options.

1. Choose **Image ► Picture Frame**.  
The Picture Frame dialog box appears.
2. In the Picture Frame group box, choose a frame from the drop-list.
3. In the Orientation group box, choose one of the following options:
  - **Frame canvas** — sizes the frame to the canvas
  - **Frame current layer** — sizes the frame to the current layer
4. Choose one of the following options:
  - **Frame inside of the image** — resizes the frame to fit within the image canvas
  - **Frame outside of the image** — increases the canvas size to accommodate the frame
5. Click **OK**.



If you enjoyed this tutorial, be sure to check out the other tutorials that are available in the Discovery Center. If you have any ideas for additional tutorials or projects that you would like to see in the future, email [Discovery.Center@corel.com](mailto:Discovery.Center@corel.com).