

## Working With Nik Color Efex Pro™ 3.0 in Corel® PaintShop™ Pro X4

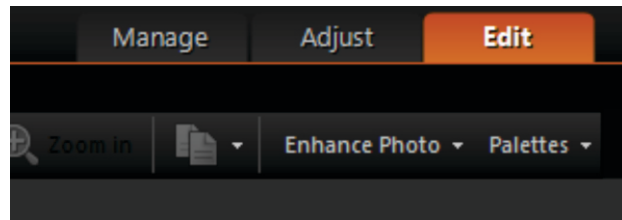
In this tutorial, we'll look at using the Nik Color Efex Pro 3.0 plugin in Corel PaintShop Pro X4 to enhance, stylize, and improve your images.



### What you will learn:

- Using the Zoom tool
- Using filter controls
- Adjusting shadows and highlights
- Using Control Points
- Using filter interface settings

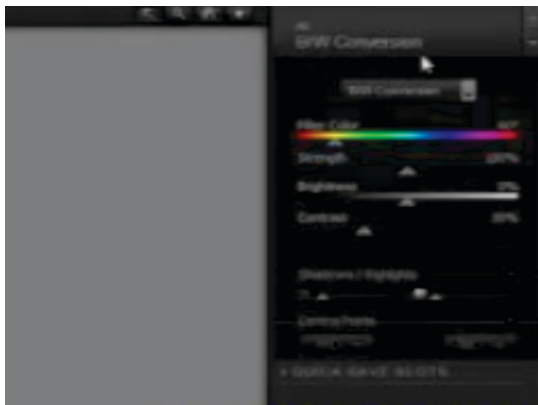
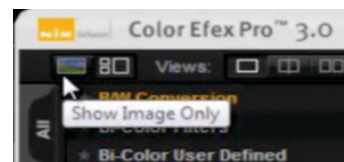
1. Click the **Edit** tab to open the Edit workspace.



2. Click **Effects** menu ► **Plugins** ► **Nik Software** ► **Color Efex Pro 3.0 Complete**.

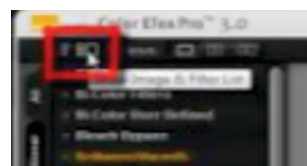
A list of the available filters opens to the left of the Image Preview.

To hide the list to get a larger preview area, click **Show Image Only**.



3. Select a filter from the Filter Controls panel on the right.

To revert back to the original view, click **Show Image and Filter List**.



Nik Color Efex Pro 3.0 offers three modes for previewing filter effects on the active image.

**Single Image View** is the default viewing mode.



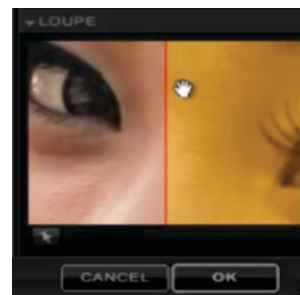
**Split Preview** gives a simultaneous before and after view. Dragging the red line changes the size of the image area with the filter applied.



**Side-by-Side Preview** gives two, separate before and images.



When the **Loupe** tool is enabled, the cursor becomes a Pan tool so you can reposition the content in the Preview Window.

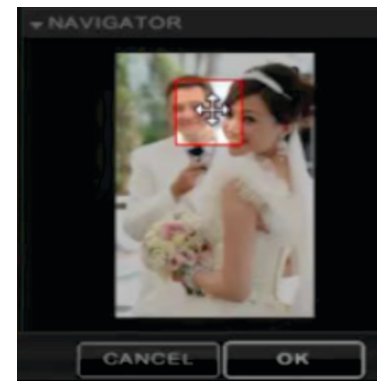


## Using the Zoom tool

You activate the Zoom tool by pressing **Z**, and you can switch to it temporarily from other tools by pressing **Ctrl+Spacebar**. Pressing **H** switches to the Pan tool. Also,

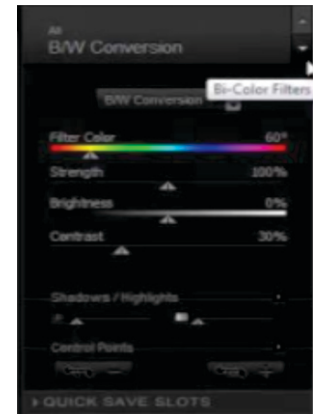
- Ctrl++** zooms in one level
- Ctrl+-** zooms out one level
- Ctrl+0** zooms to fit
- Ctrl+Alt+0** zooms to 100%

You can also use the Navigator window to select a specific area of your image to preview. The Background Color Selector tool lets you change the background color surrounding the image.



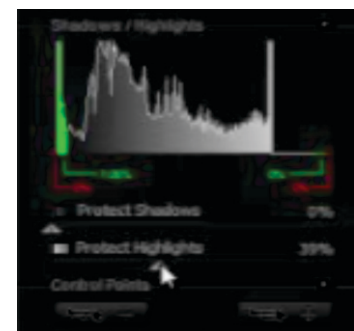
## Using the filter controls

All available filters are integrated into a single interface. Using the arrows, you can quickly scroll to the previous or next filter. The control sliders change depending on the selected filter.



## Adjusting shadows and highlights

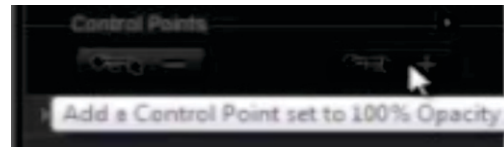
The Protect Shadows and Protect Highlights sliders help you protect image details at both ends of the tonal range. Drag a slider to the right to increase protection and to the left to decrease. Changes are immediately reflected in the histogram.



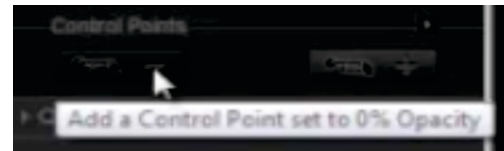
## Using Control Points

Control Points allow you to specify where an effect is applied within an image without having to use masks or selections.

Clicking the **Add a Control Point set to 100% Opacity** button adds a Control Point preset to the full effect of the filter.

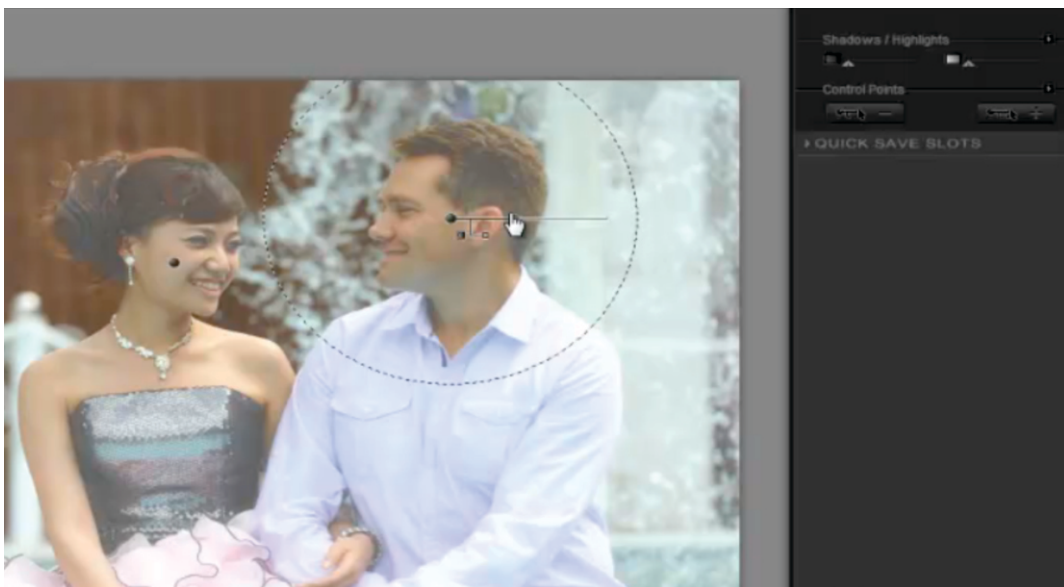


Clicking the **Add a Control Point set to 0% Opacity** button adds a Control Point preset with no filter effect.



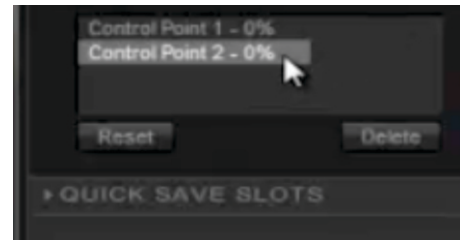
After placing the Control Point you can manually adjust the opacity.

1. Add a 0% Control Point, select an image area to set the center of the Control Point, and adjust the size of the effect.
2. Add a 100% Control Point and adjust.

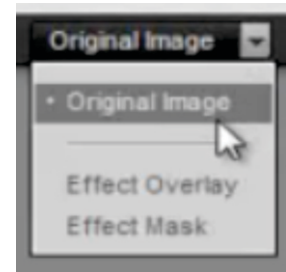


The faces of both photo subjects have been brought into focus while leaving the background with a soft, foggy effect still applied to the remaining areas.

You can adjust individual Control Points by choosing one from the list in the Control Points panel.



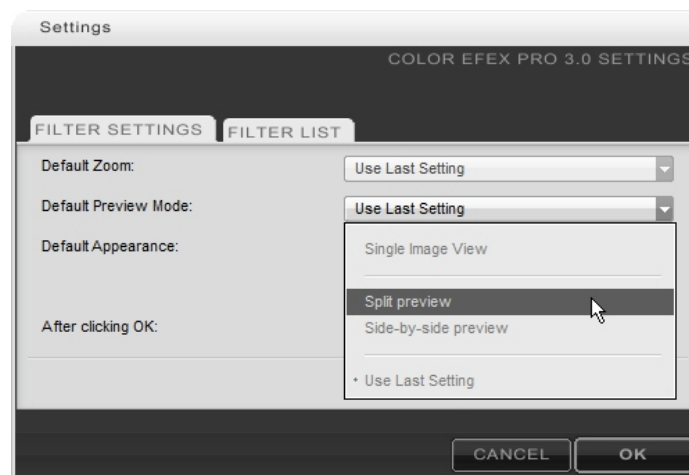
For even greater control, you can use the **Effect Overlay** or **Effect Mask** commands to see exactly where the effect has been applied to your image.



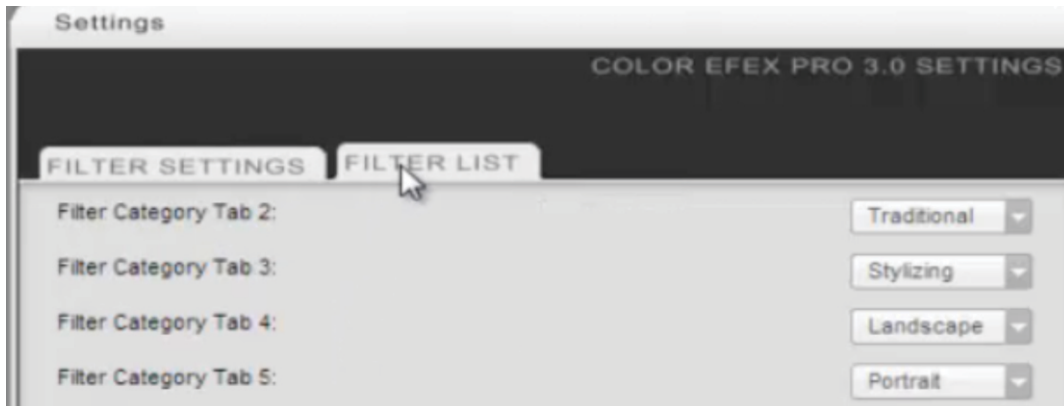
## Using the filter interface settings

You can customize the default look and functionality of the filters.

1. Click the **Settings** button.
  2. Choose the zoom level when the interface is launched.
  3. Choose a previewing mode for images.
  4. Choose a default background color.
- To restore Color Efex Pro 3.0 filter settings, click Reset.

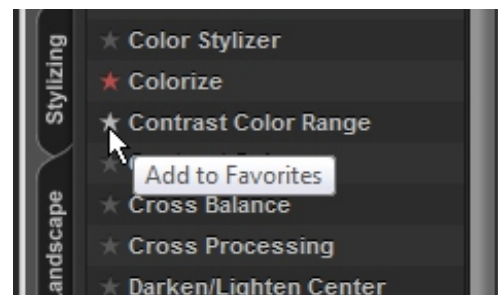


You can use the Filter List options to access a set of effects, which are grouped together on a tab.



Each tab now displays a selected set of effects that are most commonly used for specific situations .

You can start a collection of your favorite effects by clicking the star next to the name of the filter to automatically add it to the Favorites tab.



If you enjoyed this tutorial, be sure to check out the other tutorials that are available in the Discovery Center. If you have any ideas for additional tutorials or projects that you would like to see in the future, email [Discovery.Center@corel.com](mailto:Discovery.Center@corel.com).