

## Creating a Calendar in CorelDRAW®

Welcome to this tutorial using CorelDRAW® !  
 The hardest part about creating a calendar in CorelDRAW is deciding on the size. Once you set the page size, the script will take care of the rest.



### What You Will Learn

- How to use the Calendar Macro to create one of many different styles of calendars
- How to import an image into CorelDRAW
- How to use the PowerClip in CorelDRAW X6 and previous versions of CorelDRAW

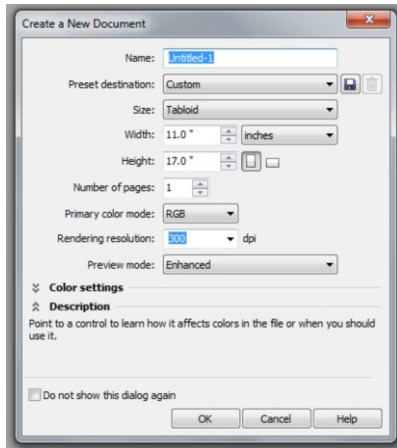
## Preparing the Document

The hardest part about creating a calendar in CorelDRAW is deciding on the document size. Once you set the page size, the script will take care of the rest, whether it is for the back of a business card or a 4' panel highlighting monthly specials.

The script that is included with CorelDRAW is capable of creating a calendar almost any size that you may require; it is just a matter of setting the page size and then configuring the proper settings.



In this example, create a tabloid size wall calendar that displays the entire year.

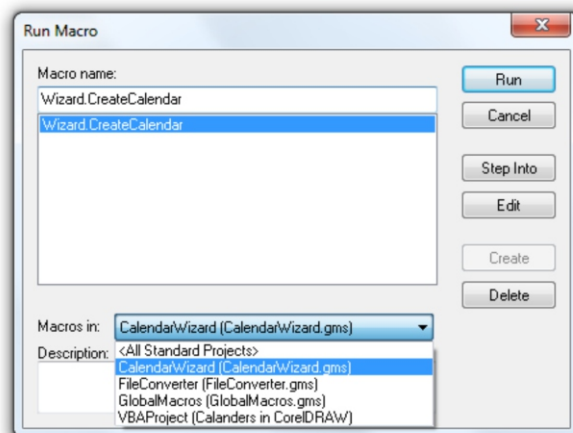


1. Start by creating a new document. In the **New Document** dialog, select **Tabloid** from the **Page Size** drop-down (Portrait or Landscape).

As this is intended to be a small print run (only 200 copies) on a color printer at the local print shop, select **RGB** from the **Primary color mode** and click **OK**.

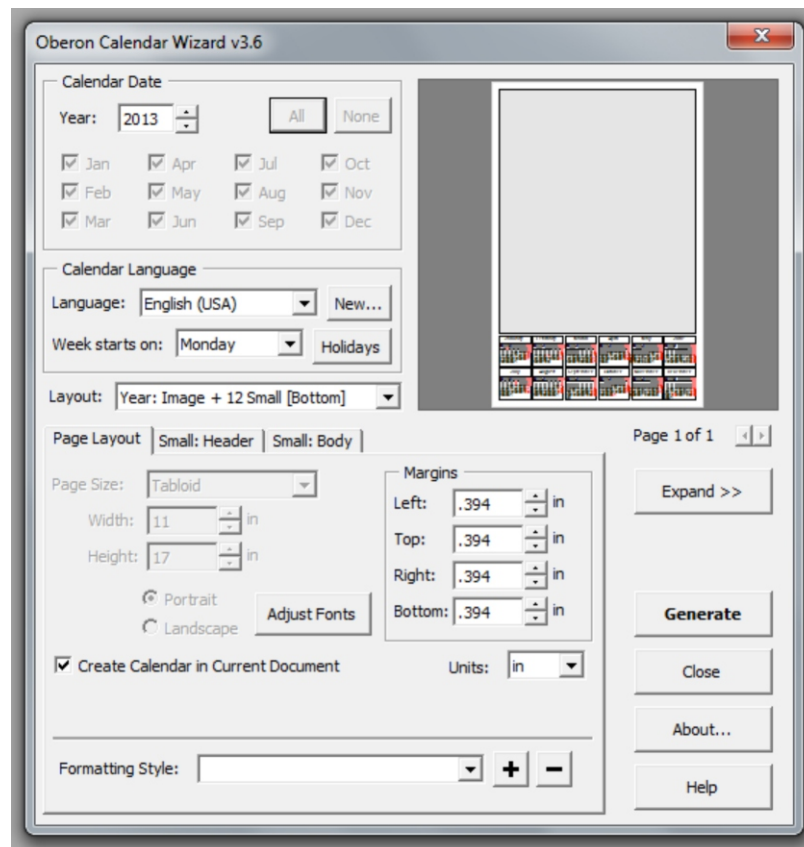
2. From the **Tools** menu, select **Macro > Run Macro**.

3. When the **Run Macro** dialog box opens, from the **Macros in:** drop-down (at the bottom of the dialog), select **CalendarWizard** (CalendarWizard.gms) and click **Run**.



## Using the Calendar Macro

- Looking at the interface, the top left corner lets you select the year and the specific months. Click the **All** button in the upper right if you want to create an entire year. Below this is the **Language** drop-down menu.
- Under **Layout**, you will see a number of different layouts. Experiment for a moment and then select **Year: Image + 12 Small [Bottom]**.
- On the **Page Layout** tab, click the button that reads **Adjust Fonts**. This will automatically adjust the fonts to fit within the various regions. Alternatively, you can select the **Small: Header** and **Small: Body** tabs and manually adjust them. You also have the ability to select the color of the text.



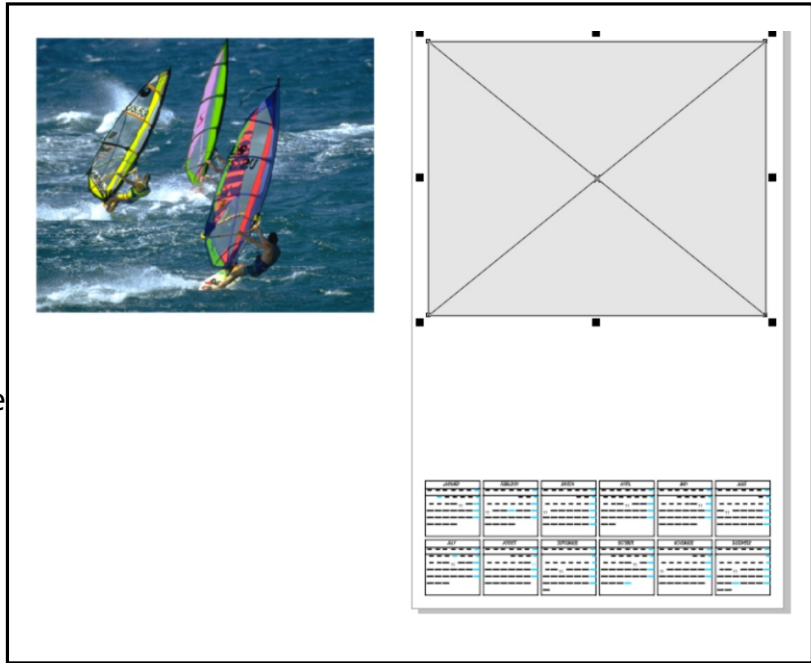
- After you are happy with the settings, click the **Generate** button. It will probably take no more than about 15 seconds until you see the message **Finished Generating Calendar**; then click **OK** and select **Close**.

## Creating a PowerClip

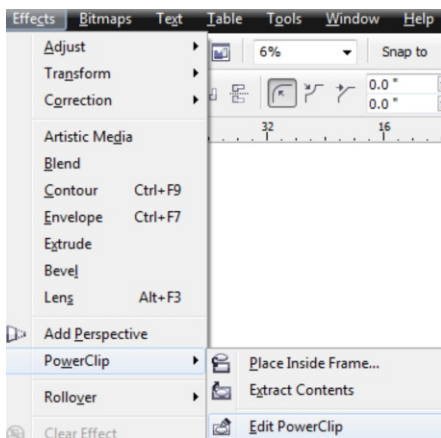
8. Now it is time to dress it up. Resize the larger gray rectangle to **10" by 8"** using the **Pick** tool and place it toward the top of the page. This will leave space to add your logo, address, and the year.

9. If you are using CorelDRAW X6, right-click on the rectangle and select **Frame Type > Create Empty PowerClip Frame**.

10. Go to **File > Import** and select an image that you want to use on the calendar and place it beside the rectangle.



11. CorelDRAW X6 users, drag the image on top of the **PowerClip Frame** and release the mouse button. Go to step 16. If you have an earlier version you will need to follow the next few steps to manually create the **PowerClip**.



12. Select the bitmap and select **Effects > PowerClip > Place Inside Container**. Use the large black arrow to click on the gray rectangle.

13. If your image seems to disappear and you see an empty frame, do not worry. A **Powerclip** is like a porthole where you can hide items behind it. If the image does not sit in the middle of the porthole, you won't be able to see it.

14. With the frame selected, from the **Effects** menu, select **PowerClip > Edit Contents**. Now you will be able to see the image and the **PowerClip** frame. Drag to position and size the image where you would like it and then from the **Effects** menu, select **PowerClip > Finish Editing This Level**.

## Adding a Background

15. Once your image is inside the **PowerClip** and centered where you want it, the final step is to add a background.

16. By double-clicking on the **Rectangle** tool, you will create a page frame the size of the page that will be placed behind other objects in the document. Select the **Eyedropper** tool from the toolbox and pick a color from within the image and then click the rectangle that you just created. You can also give your calendar a title or import a company address and logo to use in the space below the image.

17. Now, it's now just a matter of printing out a proof, and if everything is OK, send it off to the printers or copy center.



If you have enjoyed this tutorial, be sure to check out the other tutorials that are available in the Discovery Center. If you have any ideas for tutorials or projects that you would like to see in the future, e-mail [Discovery.Center@corel.com](mailto:Discovery.Center@corel.com).