



PaintShop® Pro x5

Reviewer's Guide

Corel®
PaintShop® Pro X5

Contents

1 Introducing Corel PaintShop Pro X5	1
2 Customer profiles	3
3 What's included?.....	5
4 New features	7
Organize and enhance.....	7
Get creative	10
Share	13
Learn	14

1



Introducing Corel® PaintShop® Pro X5

Corel® PaintShop® Pro X5 is powerful, easy-to-use image-editing software that helps anyone with a passion for photography produce stunning photos and creative designs. Whether you're a budding amateur or a self-identified "pro", PaintShop Pro X5 offers a wealth of features that help you organize, edit, and share your photos and artistic creations with ease.

Organize and enhance

With the new Places photo-mapping feature, PaintShop Pro X5 introduces a new method of organizing your photo collection by using location information or even GPS logger data. You can also use the new facial recognition functionality and integration with social networks to tag the people in your photos.

The new Instant Effects palette offers visually descriptive thumbnails of an array of single-click preset effects, so you can instantly achieve eye-catching photo creations. In addition, the new High Dynamic Range (HDR) tools make it easier than ever to create stunningly beautiful HDR images. Plus, the new single RAW photo feature helps you simulate an HDR-style effect.

Get creative

PaintShop Pro X5 offers exciting new ways for you to get creative with your photos, such as the Graduated Filter effect. With the new Retro Lab, you can design and share your own effects that simulate today's popular vintage-style pocket camera effects. And whenever you customize an effect, you can save your settings for later use as a

preset in the Instant Effects palette, which is accessible from all three workspaces: Manage, Adjust, and Edit.

What's more, several design tools, such as the Crop and Text tools, Layer Styles, and brushes have been enhanced to help you spend less time achieving the precise effect you want. PaintShop Pro X5 also offers powerful multi-script support, which lets you customize, save, and run scripts for use in future creative endeavors.

Share

Once you've created that perfect photo, or slideshow, you'll want to share it with family and friends. To that end, PaintShop Pro X5 offers enhanced social media integration that makes it easier to upload your creations directly.

With the new Share My Trip projects, you can create interactive maps of your travel route, complete with zoomable photos and captions. Not only will you have a treasured family keepsake, but the people you share it with will be able to relive your trip in detail.

Learn

PaintShop Pro X5 provides several learning tools that make it easy to get better acquainted with the application. The Learning Center palette offers guidance on how to use tools, and information on such tasks as organizing your photos, adjusting and retouching, working with layers, and much more. In addition, the Corel® Guide provides program updates, downloadable content, tips and tricks, tutorials, and videos.

2



Customer profiles

Corel PaintShop Pro X5 is relied upon by a diverse range of users, from photographers and photo enthusiasts to digital designers and content creators.

Photo enthusiasts

These users trust PaintShop Pro X5 to bring out the absolute best in their photos. Whether they're just starting out as hobbyists or are passionate photographers, they want to be able to quickly and easily organize and edit their photos.

For photographers, particularly those that derive an income from their camera equipment and photo retouching services, they also want access to more advanced tools that help them tap into their creativity.

Digital designers

There are several categories of digital designers who use PaintShop Pro X5 — content creators, web designers, creative designers, and scrapbookers. They all want tools that give them unlimited flexibility in producing creative designs.

Content creators may be sharing retouched photos with friends online, personalizing their digital life by creating custom avatars for their social media accounts, or expressing their creativity through digital artwork, such as collages, flyers, and even video projects.

Web designers create custom graphics for websites, blogs, and other online platforms. They use powerful image creation tools, web output options, and scripts to create the elements they need for their online presentations.

Creative designers produce graphics for many disparate projects and want tools that help them express their creativity in a multitude of ways. Whether they're capturing onscreen images or designing graphic artwork, they use PaintShop Pro X5 for its vector layers, file format support, text handling, and powerful object tools.

Scrapbookers use photos as the main subject matter in their projects, and they invest considerable time perfecting their designs. They want advanced editing tools that allow them total creative control. They may turn to tutorials and other creative content for inspiration.

3



What's included?

Application

- **Corel® PaintShop® Pro X5:** This powerful, easy-to-use image-editing software helps anyone with a passion for photography produce stunning photos and creative designs. It offers a wealth of features that help you organize, edit, and share your photos and artistic creations with ease.

Documentation

- Online Help, Learning Center palette
- PDF User Guide
- Corel® Guide, with both video and text tutorials
- Getting Started windows provide an overview of new tools and features, making it easy to get up to speed quickly

Minimum system requirements

- Microsoft® Windows® 8, Windows® 7, Windows Vista®, and Windows® XP with latest service pack (32-bit or 64-bit editions)
- Intel® Pentium® 4 or AMD Athlon™ 64 or later (multi-core processor recommended)
- 1.5 GB RAM (2 GB RAM or higher recommended)
- 1 GB free hard drive space (2 GB or greater recommended)
- 1024 × 768 resolution, 16-bit color display (1280 × 800 resolution, 24-bit color display recommended)
- DirectX® 9 or higher

- Windows-compatible CD-ROM drive for installation
- Internet connection required to post photos online, and download program updates and content from the Corel Guide

File format support

- **Input:** AI, BMP, CAL, CALS, CGM, CLP, CMX, CT, CUR, CUT, DCX, DIB, DRW, EMF, EPS, GIF, HDP, HGL, HPG, IFF, IMG, J2C, J2K, JIF, JP2, JPC, JPE, JPEG, JPG, JPS, JPX, MAC, MPO, MRW, MSP, PBM, PCD, PCT, PCX, PDF, PGL, PGM, PIC, PICT, PNG, PNS, PPM, PS, PSD, PSP (PSP image files), RAS, RAW, RIF, RLE, SCT, SVG, SVGZ, TGA, TIF, UFO, WBM, WBMP, WDP, WEBP, WMF, WPG

RAW file support from over 300 camera models including 3FR, ARW, CR2, CRW, DCR, DNG, ERF, K25, KDC, MEF, MOS, NEF, NRW, ORF, PEF, RAF, RW2, SR2, SRF, X3F

Video input format support for MPEG-1, WMV (Windows® Media Video), MOV (QuickTime® required) and AVI (motion JPEG)

- **Output:** BMP, CAL, CALS, CLP, CUT, DCX, DIB, EMF, EPS, AI, PS, FPX, GIF, HDP, WDP, IFF, IMG, JP2, J2C, J2K, JPC, JPX, JPG, JIF, JPE, JPEG, MAC, MSP, PBM, PCX, PGM, PIC, PPM, PNG, PSD, PSP (PSP image files), RAS, RAW, RIF, RLE, SCT, CT, JPS, PNS, TGA, TIF, WBMP, WBM, WEBP, WMF

4



New features

Corel® PaintShop® Pro X5 offers a wealth of new and enhanced features to help you organize, edit, and share your photos and creations.

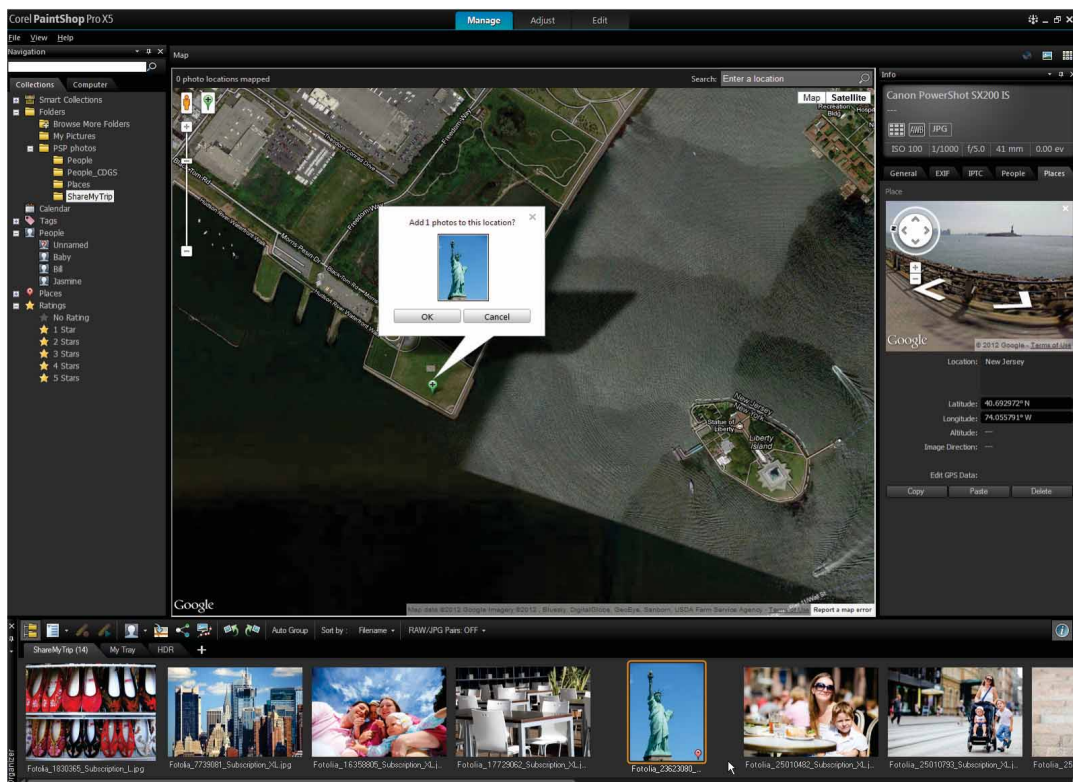
Organize and enhance

PaintShop Pro X5 introduces powerful new features that make it easier than ever to organize and edit your photos.

New! Places: PaintShop Pro X5 provides a new Map mode, which is integrated with Google

Maps™ functionality to help you map your photos based on location information. PaintShop Pro X5 can instantly map any photos that already contain location information. Alternatively, you can manually add location information by dropping photos on a map, or by using GPS data or Facebook check-in points.

Also, if you are concerned about your privacy online, PaintShop Pro X5 also makes it easy to delete location data from photos.





With the new Map mode, you can easily show where your photos were taken or add location information.

After you've added location information to your photos, **Places** can also provide a better way to organize a burgeoning photo collection. By simply clicking the Places tag on the Collections panel, you can easily drill down into your collection, for example, revisiting past vacations or groups of photos taken at particular locations.

Give it a try

Adding location information to photos

- 1 In Corel PaintShop Pro X5, click the **Manage** tab at the top of the application window.
- 2 Click the **Map Mode**  button in the upper-right corner of the Manage workspace.
- 3 In the **Organizer** palette, select any photos that you want to tag with location information.
- 4 In the **Search** bar in the upper-right corner of the Map, start typing a location and choose one from the list that appears.
- 5 Click the **Add location**  button, and then click directly on the map to tag the selected photos with the chosen location. A location marker is added to the map, and another marker appears in the lower-right corner of the photo(s).
In the Collections tab, you can now click **Places** to access photos that are grouped based on location information.

New! People: With PaintShop Pro X5, you can now use the people who appear in your photos to quickly and easily organize your collection. PaintShop Pro X5 uses facial recognition to automatically sort people with similar features into groups. This makes it a breeze to browse through your collection, identifying people and then later being able to locate photos with those people and automatically tag their photos when posting to social media.





You can use your social media contacts to sync with the people tagged in your photos. That way, your friends and family will be automatically notified whenever you upload a photo in which they appear.



The Info panel now provides a People tab, which makes it easy to manually tag the people in your photos.

Give it a try

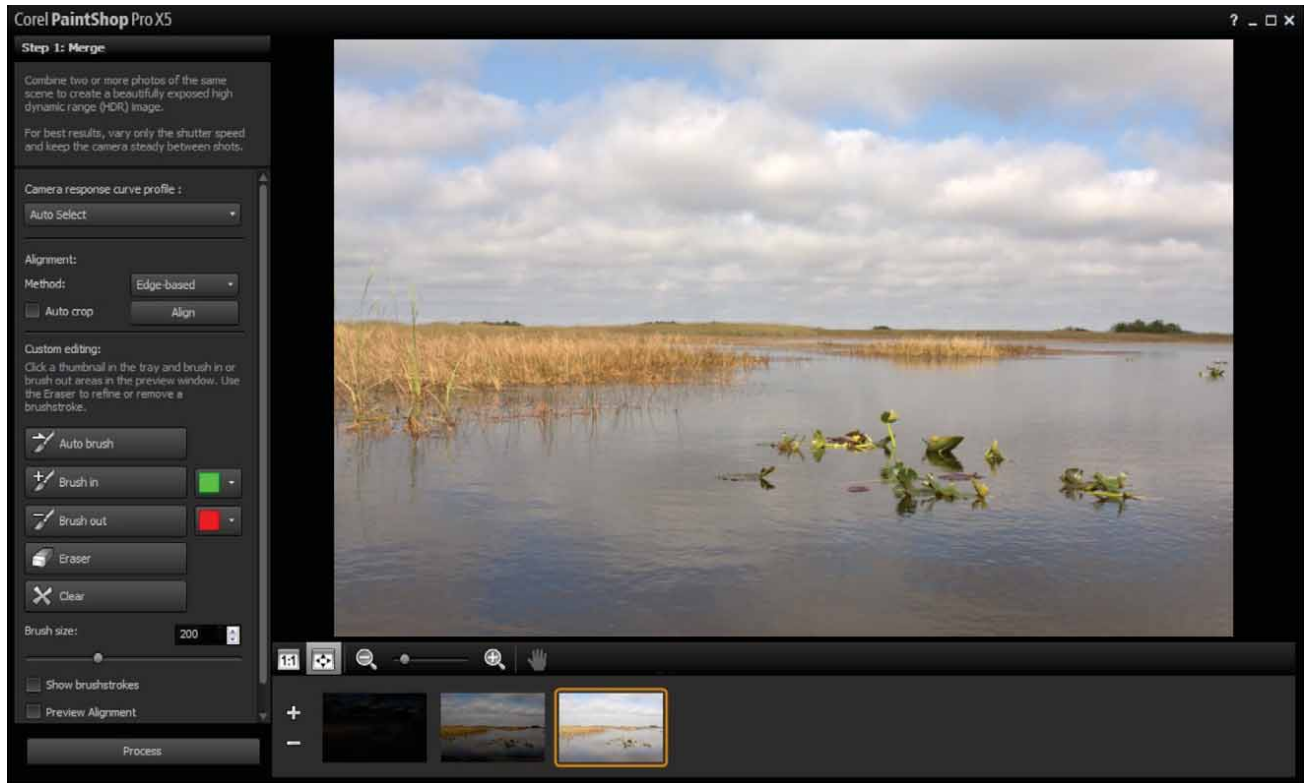
Sorting photos by people

- 1 In the **Manage** workspace, click the **Thumbnails Mode**  button.
- 2 In the **Navigation** panel, click the **Collections** tab, and select the folder(s) containing the photos that you want to sort.
- 3 In the **Organizer** palette, click the **Find People**  button and choose one of the following options:
 - **Scan selected photos**
 - **Scan current folder**
 - **Scan subfolders**
Your photos are now sorted into groups of people in a folder titled **Unnamed**.
- 4 Click the **Type a name for this group** titlebar and type a name for any group that you would like to tag.
The newly tagged group appears under the **People** folder in the Collections tab.
When you select a photo of a tagged person, buttons appear automatically that let you link to your Facebook  or Flickr  accounts.

New & Enhanced! HDR tools: The improved Exposure Merge now gives you more options and greater control when you create HDR photos. With the new, dedicated B&W controls, it's simple to switch between color and black-and-white HDR processing. The Preview Alignment option makes it easy to visually ensure proper positioning of your merged photos. The Auto Brush results have been

improved to save you time in working with photo artifacts. In addition, the Batch Merge option now

lets you apply HDR presets, so you can quickly and easily process entire sets of photos as HDR images.



With Exposure Merge, you can combine two or more bracketed photos by using HDR processing.

New! Single RAW Photo: This new feature lets you create an HDR-style effect by splitting a single RAW photo into three exposures and then recombining the exposures. This process lets you control the exposure of different areas of the photo to bring out more detail.

Give it a try

Using the Single RAW Photo effect

- 1** In the **Manage** workspace, select the thumbnail of a RAW photo.
- 2** Click **File** ▶ **HDR** ▶ **Single RAW Photo**.
The Step 1: Split Photo window opens.
- 3** Drag the **EV Interval** slider to set the simulated exposure interval.
This value splits the photo into three exposures.
You can also drag the **Center Exposure** slider if you want the middle exposure to have a value other than 0.

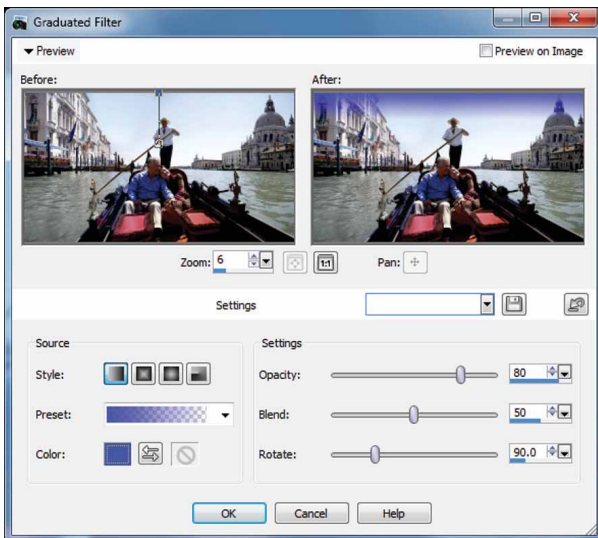
Give it a try

- 4** Click **Split Photo**.
You can select each of the three thumbnails that appear in the Tray to view the resultant exposures.
- 5** When you are satisfied with the three exposures, click **Process**.
- 6** In the **Step 2: HDR Adjustments** window, choose one of the preset thumbnails, and click **Process**.
Alternatively, you can adjust any of controls in the **Color** area if you want more control over the appearance of the merged exposures.
- 7** In the **Step 3: Fine Tune** window, apply any of the tools or adjustment options to finalize the image.
- 8** When you are satisfied with the results, click **Save and close**.

Get creative

With a wealth of preset and customizable effects, PaintShop Pro X5 gives you practically inexhaustible options for expressing your creativity.

New! Graduated Filter effect: You can now apply a semi-transparent color gradient to your photos which simulates the effect of using a graduated filter on a camera lens. For example, you can darken or tint a sky that appears washed out without affecting other areas of the photo. PaintShop Pro X5 includes four gradient styles, a color picker, as well as opacity, blend, and rotation controls so you can experiment until you achieve the desired effect.



The new Graduated Filter effect lets you use color gradients to alter specific areas of a photo.

Give it a try

Applying a Graduated Filter effect

- 1 Click **File** ► **Open**, and navigate to the folder containing the photo to which you want to apply the effect, select it, and click **Open**.
- 2 Click **Effects** ► **Photo Effects** ► **Graduated Filter**.
- 3 In the **Graduated Filter** dialog box, click a **Style** button to set the shape of the gradient. The default option, Linear Graduated Filter, best simulates traditional graduated filters.

Give it a try

- 4 In the **Before** pane, drag the line to set the size and direction of the gradient.
- 5 In the **Preset** drop-list, choose a type of blend.
- 6 In the **Color** area, click one of the color swatches to set a color.
- 7 In the **Settings** area, use the sliders to adjust any of the following:
 - **Opacity** – sets the color transparency
 - **Blend** – sets the gradient color transition
 - **Rotate** – sets the gradient angle
- 8 When you are satisfied with the result, click **OK**.

New! Retro Lab: PaintShop Pro X5 introduces the new Retro Lab, which lets you apply effects that were inspired by vintage-style pocket cameras, such as LOMO, Diana, or Holga. This trendy photo style pushes an image's color and contrast beyond its natural appearance, often with blurred or vignette edges. More than just a collection of single-click filters, the Retro Lab offers a variety of controls that let you personalize your own retro style. In addition, you can save your settings as a custom preset for future use.



With the new Retro Lab, you can create fun effects to give your photos a trendy, vintage look.

New! Instant Effects palette: Quickly select the right polish before you share a photo by choosing from an array of preset effects in the Instant Effects palette. Each effect is represented by a descriptive thumbnail, which makes it easy to find the precise effect you want. The Instant

Effects palette is organized by Artistic, Black And White, Film Styles, Landscape, Portrait, Retro, and Traditional categories. Plus, the User Defined category saves the presets that you create in any dialog box, so you can quickly and easily reuse your own personal effects.



The Instant Effects palette makes it quick and easy to browse and apply preset effects.

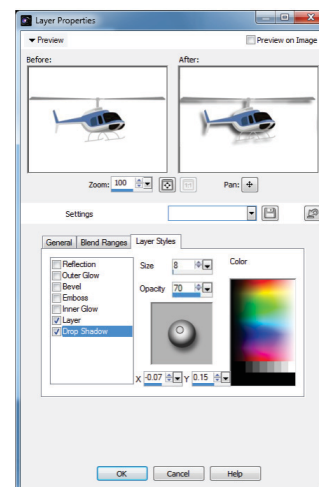
Give it a try

Applying an Instant Effect

- 1 In the **Adjust** workspace, open a photo to which you want to apply an effect.
- 2 In the **Effects** palette, choose a category from the drop-list.
- 3 Scroll through the list of available thumbnails and double-click to apply an effect.

Enhanced! Layer Styles: The Layers palette now includes a Layer Styles button, which makes it easier to access and apply Bevel, Drop Shadow, Emboss, Inner Glow, Outer Glow, and Reflection styles. A range of new controls, such as size, opacity, and color, for each Layer Style make it easier to achieve the precise look you want. Plus,

you can preview the result before committing to the effect.

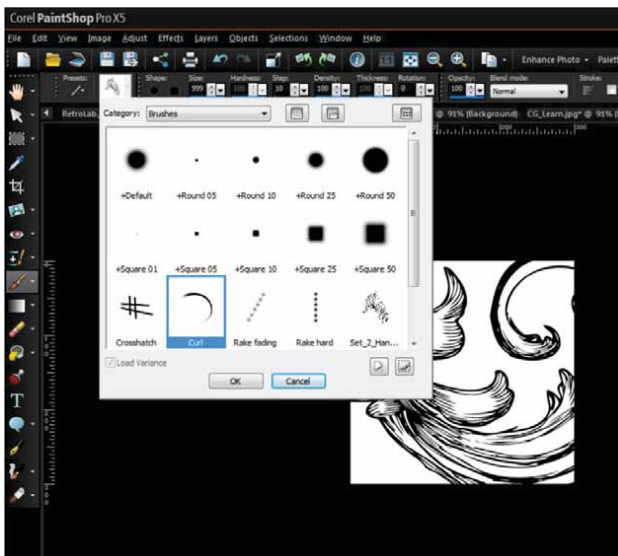


With enhanced Layer Styles, you can apply creative effects, such as Drop Shadow.

Enhanced! Crop tool: The Crop tool now offers greater flexibility so you can more easily achieve the image focus and dimensions that you want. By default, the Crop tool provides a Rule of Thirds grid to help you with image composition. In addition, you can perform a preset crop by choosing from a range of common image sizes, such as 16 × 9, 8 × 10, 5 × 7, and more. You can also define your own crop area and save it as a custom preset.

Enhanced! Text tool: The Text tool has been enhanced to give you more intuitive text selection, which makes editing and formatting text easier than ever before. You can also position text more quickly and accurately now thanks to improved interaction between the Text tool and the Pick tool.

Enhanced! Paint Brush and Art Media tools: The Paint Brush now provides increased support for Adobe® Photoshop® brushes, offering you even more ways to add a personal touch of creativity to your digital artwork. You can also use Art Media tools, such as the enhanced Watercolor Brush, to hand paint expressive strokes directly onto your photos. The Art Media tools help you produce unique effects by simulating physical pigment media, such as paint, chalk, markers, oils, pastels, pencils, and more.



With PaintShop Pro X5, you can easily import and use custom PaintShop or Adobe Photoshop (ABR) brushes.

Give it a try

Importing an ABR brush

1 In the **Edit** workspace, choose **File ▶ Import ▶ Custom Brush**.

2 In the **Import Custom Brush** dialog box, click **Open**, navigate to the folder containing the brush you want to import, select it, and then click **OK**.


The following brush types are supported:

- PaintShop Pro Brush (.pspbrush)
- Adobe Photoshop Brush (.abr)
- Jasc Brush (.jbr)

3 In the **Brushes** area, select the brushes you want to import, and click **Add**.

4 Click **OK**.

5 In the **Tools** toolbar, click the **Paint Brush** .

6 On the **Tool Options** palette, choose a brush tip from the **Brush Tip**  drop-list, and click **OK**.

You can specify brush options, such as shape, size, opacity, hardness, thickness, and rotation, on the **Tool Options** palette.

7 Do one of the following:

- To apply foreground color, drag in the image.
- To apply background color, right-click and then drag in the image.

Enhanced! Multi-script support: Built on the powerful scripting engine in PaintShop Pro, the new Run Multiple Scripts dialog box makes it easier to assign several scripts to run in sequence. This is especially useful if you want to automate repetitive photo-editing tasks, or if you want to perform the same actions on a batch of photos at once.


Share

With the introduction of new Share My Trip projects and enhanced social media integration, PaintShop Pro X5 makes it easy to share your photos with family and friends.

New! Share My Trip: When you create a Share My Trip project, you use location information to place your vacation photos on an interactive map. You can share your map as a slideshow, which you can post on a blog or upload directly to your Dropbox account and Facebook. Your family and friends will be able to view the route you've travelled. They can even zoom in on the Google Map to check out Street View for a closer look at where you've been. Prior to sharing your trip, you can use the Info panel to add captions to each photo that you place on the map, sharing anecdotes or interesting tales about your voyage.

Give it a try

Creating a Share My Trip project

1 In the **Manage** workspace, select the photos you want to include in your project, and then click the **Share My Trip**  button.

While you can select up to 200 photos, only those with location information will be used.

2 In the **Share My Trip** dialog box, click **Type a title**, and type a name for your project.

3 Type a location for the project in the **Save in** box, or click the folder icon to browse for a folder in which you want to save the project, and then click **Next**.

To preview the project, click the **Preview in Browser** button.

4 Enable one of the following check boxes:

- **Yes, upload my photo map to a public Dropbox folder.**
- **No, I will share it later.**

Choose the second option if you want to post the HTML output yourself, for example, in a blog.

If you choose the first option and want to post the Dropbox link to Facebook, enable the **Share the link on Facebook** check box, and choose a thumbnail.

Enhanced! Sharing options: PaintShop Pro X5 provides enhanced social media integration, which lets you upload photos simultaneously to your Facebook®, Flickr®, and Google+™ accounts. The Social Sharing dialog box makes it easy to choose which photos to share, and offers a preset quality option to optimize your photos for faster upload. You can also add new albums, add descriptions for each photo, and remove any contact tags before uploading.



You can now upload photos to multiple social media accounts at once.

Learn

In addition to full context-sensitive help and Getting Started screens for certain features, PaintShop Pro X5 also give you several helpful tools that provide information on how to use the application.

New & Enhanced! Core!® Guide: There's always something new to discover in the Core! Guide, which is your source for the most up-to-date information and content for PaintShop Pro X5. You'll find tips and tricks, integrated tutorials, videos, downloadable content, and the latest program updates.



The Core! Guide provides tips, new video tutorials, and other downloadable content.

Enhanced! Learning Center: When you turn on the Learning Center (F10), you'll get helpful and interactive instructions on the currently selected tool. It's a great way for new users to learn about PaintShop Pro X5, and it can also help experienced users accomplish tasks faster. In addition to tool-based guidance, the Home page of the Learning Center provides task-based information on a variety of topics, such as working with layers, retouching photos, applying artistic effects, and more.

About Corel

Corel is one of the world's top software companies, with more than 100 million active users in over 75 countries. We develop software that helps people express their ideas and share their stories in more exciting, creative, and persuasive ways. Through the years, we've built a reputation for delivering innovative, trusted products that are easy to learn and use, helping people achieve new levels of productivity. The industry has responded with hundreds of awards for software innovation, design, and value.

Our award-winning product portfolio includes some of the world's most widely recognized and popular software brands, including CorelDRAW® Graphics Suite, Corel® Painter™, Corel DESIGNER® Technical Suite, Corel® PaintShop® Pro, Corel® VideoStudio®, Corel® WinDVD®, Corel® WordPerfect® Office, WinZip®, Roxio Creator®, and Roxio® Toast®. Our global headquarters are in Ottawa, Canada, and major offices are in the United States, the United Kingdom, Germany, China, Taiwan, and Japan.

Copyright © 2012 Corel Corporation. All rights reserved.

Corel® PaintShop® Pro X5 Reviewer's Guide

Protected by U.S. Patents 5652880; 5347620; 5767860; 6195100; 6385336; 6552725; 6657739; 6731309; 6825859; 6633305; Patents Pending.

Product specifications, pricing, packaging, technical support and information ("specifications") refer to the retail English version only. The specifications for all other versions (including other language versions) may vary.

INFORMATION IS PROVIDED BY COREL ON AN "AS IS" BASIS, WITHOUT ANY OTHER WARRANTIES OR CONDITIONS, EXPRESS OR IMPLIED, INCLUDING, BUT NOT LIMITED TO, WARRANTIES OF MERCHANTABILITY, SATISFACTORY QUALITY, MERCHANTABILITY OR FITNESS FOR A PARTICULAR PURPOSE, OR THOSE ARISING BY LAW, STATUTE, USAGE OF TRADE, COURSE OF DEALING OR OTHERWISE. THE ENTIRE RISK AS TO THE RESULTS OF THE INFORMATION PROVIDED OR ITS USE IS ASSUMED BY YOU. COREL SHALL HAVE NO LIABILITY TO YOU OR ANY OTHER PERSON OR ENTITY FOR ANY INDIRECT, INCIDENTAL, SPECIAL, OR CONSEQUENTIAL DAMAGES WHATSOEVER, INCLUDING, BUT NOT LIMITED TO, LOSS OF REVENUE OR PROFIT, LOST OR DAMAGED DATA OR OTHER COMMERCIAL OR ECONOMIC LOSS, EVEN IF COREL HAS BEEN ADVISED OF THE POSSIBILITY OF SUCH DAMAGES, OR THEY ARE FORESEEABLE. COREL IS ALSO NOT LIABLE FOR ANY CLAIMS MADE BY ANY THIRD PARTY. COREL'S MAXIMUM AGGREGATE LIABILITY TO YOU SHALL NOT EXCEED THE COSTS PAID BY YOU TO PURCHASE THE MATERIALS. SOME STATES/COUNTRIES DO NOT ALLOW EXCLUSIONS OR LIMITATIONS OF LIABILITY FOR CONSEQUENTIAL OR INCIDENTAL DAMAGES, SO THE ABOVE LIMITATIONS MAY NOT APPLY TO YOU.

Corel, the Corel logo, CorelDRAW, Corel DESIGNER, MotionStudio 3D, PaintShop Pro, Painter, Roxio Creator, Roxio Toast, VideoStudio, WinZip, WinDVD, and WordPerfect are trademarks or registered trademarks of Corel Corporation and/or its subsidiaries in Canada, the U.S., and/or other countries.

Other product, font, and company names and logos may be trademarks or registered trademarks of their respective companies.

PaintShop® Pro X5

Media Contact North America

Sara Chesiuk
Public Relations Manager
Corel Corporation
613-728-0826 ext. 1259
sara.chesiuk@corel.com



Corel Corporation
1600 Carling Ave.
Ottawa, ON
Canada K1Z 8R7

Corel UK Limited
Sapphire Court
Bell Street
Maidenhead
Berkshire SL6 1BU
United Kingdom

Corel TW Corp.
7F No. 399, Rueiguang Rd,
Neihu District, Taipei City
114, Taiwan