

COREL™

VENTURA¹⁰

For Windows®

Reviewer's Guide

Product specifications, pricing, packaging, technical support and information (“Specifications”) refer to the United States retail English version only. The United States retail version is available only within North America and is not for export. Specifications for all other versions (including language versions and versions available outside of North America) may vary.

INFORMATION IS PROVIDED BY COREL ON AN “AS IS” BASIS, WITHOUT ANY OTHER WARRANTIES OR CONDITIONS, EXPRESS OR IMPLIED, INCLUDING, BUT NOT LIMITED TO, WARRANTIES OF MERCHANTABILITY, SATISFACTORY QUALITY, MERCHANTABILITY OR FITNESS FOR A PARTICULAR PURPOSE, OR THOSE ARISING BY LAW, STATUTE, USAGE OF TRADE, COURSE OF DEALING OR OTHERWISE. THE ENTIRE RISK AS TO THE RESULTS OF THE INFORMATION PROVIDED OR ITS USE IS ASSUMED BY YOU. COREL SHALL HAVE NO LIABILITY TO YOU OR ANY OTHER PERSON OR ENTITY FOR ANY INDIRECT, INCIDENTAL, SPECIAL, OR CONSEQUENTIAL DAMAGES WHATSOEVER, INCLUDING, BUT NOT LIMITED TO, LOSS OF REVENUE OR PROFIT, LOST OR DAMAGED DATA OR OTHER COMMERCIAL OR ECONOMIC LOSS, EVEN IF COREL HAS BEEN ADVISED OF THE POSSIBILITY OF SUCH DAMAGES, OR THEY ARE FORESEEABLE. COREL IS ALSO NOT LIABLE FOR ANY CLAIMS MADE BY ANY THIRD PARTY. COREL’S MAXIMUM AGGREGATE LIABILITY TO YOU SHALL NOT EXCEED THE COSTS PAID BY YOU TO PURCHASE THE MATERIALS. SOME STATES/COUNTRIES DO NOT ALLOW EXCLUSIONS OR LIMITATIONS OF LIABILITY FOR CONSEQUENTIAL OR INCIDENTAL DAMAGES, SO THE ABOVE LIMITATIONS MAY NOT APPLY TO YOU.

© 2002 Corel Corporation. All rights reserved.

Corel, the Corel logo, Corel CAPTURE, CorelDRAW, Corel Painter, Corel Presentations, Corel PHOTO-PAINT, Corel Ventura, Micrografx, Micrografx Designer, Picture Publisher, QuickCorrect, Spell-As-You-Go, WordPerfect, and XMetaL are trademarks or registered trademarks of Corel Corporation and/or its subsidiaries in Canada, the U.S., and/or other countries. Adobe, Acrobat, Distiller, FrameMaker, Illustrator, Photoshop, PostScript, PostScript 3, and Reader are registered trademarks of Adobe Systems Incorporated in the United States and/or other countries. Ami Pro is a registered trademark of Lotus Development Corporation. AutoCAD is a registered trademark of Autodesk, Inc. FreeHand is a registered trademark of Macromedia, Inc. Grammatik is a registered trademark of Novell, Inc. ColorSync, TrueType, and Macintosh are registered trademarks of Apple Computer, Inc., registered in the United States and other countries. Microsoft, IntelliMouse, Visual Basic, and Windows are registered trademarks of Microsoft Corporation in the United States and/or other countries. OS/2 is a registered trademark of IBM Corporation. Pentium is a registered trademark of Intel Corporation. SCITEX is a registered trademark of Scitex Corporation Ltd. TARGA is a trademark of Pinnacle Systems, Inc., registered in the U.S. and other countries. Other product, font, and company names and logos may be trademarks or registered trademarks of their respective companies.

Contents

Executive Summary	4
Introducing Corel Ventura 10	6
Applications	6
Supporting applications and utilities	6
Documentation	7
Extras	7
Minimum system requirements	7
What's New and Enhanced?	8
Key Features of Corel Ventura 10	14
Publication management	14
XML import	18
Publish to PDF	19
Text import	21
Tables	23
Color management	24
Print features	25
Corel Corporate Profile	27

Executive Summary

Corel Ventura® 10 is a powerful, feature-rich publishing application that combines virtually all the capabilities that professional publishers demand. With exceptional versatility, Corel Ventura lets you integrate information from virtually all media sources — including text, graphics, charts, tables, spreadsheets, and databases. You can create text directly in the application's all-purpose editor or you can take full advantage of the industry's most extensive set of import filters to incorporate data from almost any format into your publications.

The ability to import XML documents makes Corel Ventura the ideal publishing companion to Corel® XMetaL®. To give you precise control over the formatting of imported XML documents, Corel Ventura uses the new XML Mapping Editor to create mapping files. This functionality, combined with the application's extensive import filters, allows you to gain maximum reuse from all forms of content. Corel Ventura 10 is the ideal application for combining and transforming your organization's information and data into highly manageable, structured documents.

In addition, Corel Ventura boasts comprehensive character, frame, page, paragraph, rule, and table tagging that can save considerable time. To further increase your ability to manage and maintain your publishing projects, Corel Ventura includes the dockable Tag window and navigator tools. You can also use programming languages, such as C++ or Microsoft® Visual Basic®, to automate any command used during publication production. You can also fully customize the application's user interface to reflect your workflow.

The ability to generate endnotes and footnotes, headers and footers, cross-references, forms, indexes, markers, tables, and tables of contents makes Corel Ventura a compelling choice for any page layout and design project. From small booklets to long, structured, text- and graphic-intensive publications, the boundless capabilities of Corel Ventura exceed those of other publishing applications.

The output capabilities of Corel Ventura enable seamless output to many industry standard devices and formats. Featuring a powerful print engine that produces high-quality PostScript® output, Corel Ventura offers brand-new Publish to PDF functionality, and prepress options that include separations, imposition, and layout enhancements. As professional publishers know, accurate, reliable color management is essential to achieving high-quality color output. To facilitate this, Corel Ventura features enhanced color management that includes support for the International Color Consortium (ICC) and the

industry-leading ColorSync® technology. In addition, first-rate page layout and typesetting tools allow you to easily manipulate words and pictures in structured publications.

In the complex world of business publishing, highly structured documents are common, which makes software stability essential. Corel Ventura is a complete solution for any publishing professional, offering the stability, tools, and features needed to output professional results in print or electronic format. Combining the latest technology to create a more stable application environment, Corel Ventura can help you reduce production time and cost for all your publishing projects.

Introducing Corel Ventura® 10

Corel Ventura 10 is a complete page layout and publishing solution that incorporates several high-powered and versatile engines to help you develop professional output for print, electronic media, and the Web.

Applications

Corel Ventura 10: This powerful publishing application offers you everything needed to create, maintain, and output long, structured, text- and graphic-intensive publications for print, electronic media, and the Web.

Database Publisher: This application lets you pull enormous amounts of data from one or more databases, organize and format it to your specifications, and publish it with Corel Ventura.

Supporting applications and utilities

Corel CAPTURE™ 10: Corel CAPTURE lets you capture images of a computer screen or record on-screen actions as animation files. You can capture images of the entire screen, individual windows, toolbars, flyouts, menu lists, or any rectangular, elliptical or freehand area.

Corel Barcode wizard: The Corel Barcode wizard is a utility for creating industry-standard barcodes.

XML Mapping Editor: The XML Mapping Editor utility allows you to create mapping files for seamlessly importing well-formed XML documents.

Adobe® Acrobat® Reader® 5.0: Adobe Acrobat Reader lets you view, navigate, and print PDF documents across multiple platforms.

Service Bureau Profiler: This utility is used to create service bureau profiles which provide a comprehensive overview of the capabilities and the equipment and file submission requirements of a service bureau, allowing you to better prepare your documents for output in this environment.

Documentation

User guide: Corel Ventura includes comprehensive documentation to help you learn and use the application efficiently. The Corel Ventura 10 user guide is also available as a PDF file.

Help: Through context-sensitive Help files, you can find answers to common questions and step-by-step procedural information about Corel Ventura.

Extras

Corel Ventura offers an extensive collection of fonts, symbols and templates to help you enhance your documents, including

- 1,500 TrueType® and Type 1 fonts
- symbols and templates

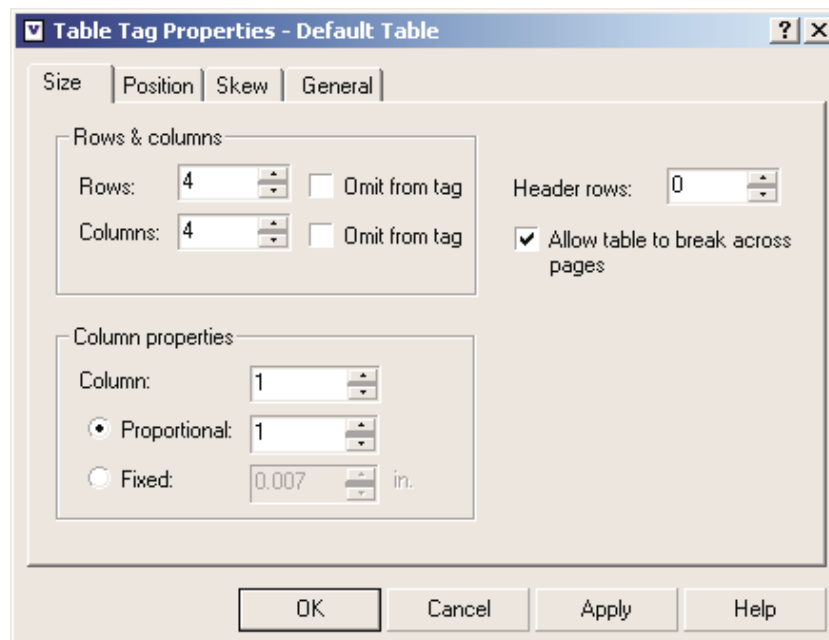
Minimum system requirements

- Windows® 2000 and Windows XP
- Pentium® 233 MHz processor
- 128 MB RAM
- 240 MB hard disk space for installation
- CD drive
- SVGA monitor
- mouse or tablet

What's New and Enhanced?

Corel Ventura 10 offers you the control, structure, and power needed to create and manage long, structured, text- and graphic-intensive documents. For this extensive upgrade, many of the application's engines have been replaced with more powerful, robust engines appropriate for use in enterprise environments. In addition, most of the commands now have icons, making it easier for you to access them from the menu bars, toolbars, and property bars.

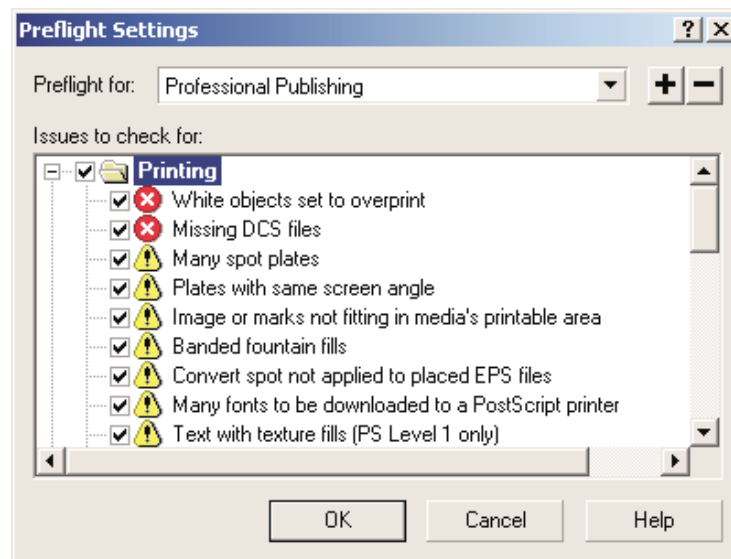
Table tags: Building on the application's robust table functionality, Corel Ventura introduces table tags to further improve workflow efficiency. Whether imported from another word processing or spreadsheet application, or created directly in Corel Ventura, all tables are now associated with table tags. When a tag's properties are modified, all tables formatted with that tag are automatically updated. In addition, tag attributes are stored with a publication's stylesheet. This can save time because, instead of generating new tags for each publication, you can import complete stylesheets, or individual tags from a stylesheet, into your publications.



XML import: The ability to import XML documents makes Corel Ventura the ideal publishing companion to Corel XMetaL. To help make importing XML documents seamless, Corel Ventura uses the new XML Mapping Editor, a utility that gives you precise control over document formatting. In addition, you can embed imported XML documents into your publication or link to them externally, which allows you to edit and validate the source in an XML authoring tool of your choice.

Publish to PDF: The new Publish to PDF engine in Corel Ventura allows you to create PDF files identical to your original publications without relying on additional software such as Adobe® Acrobat® Distiller®. The new engine provides many options and greater flexibility for outputting to PDF.

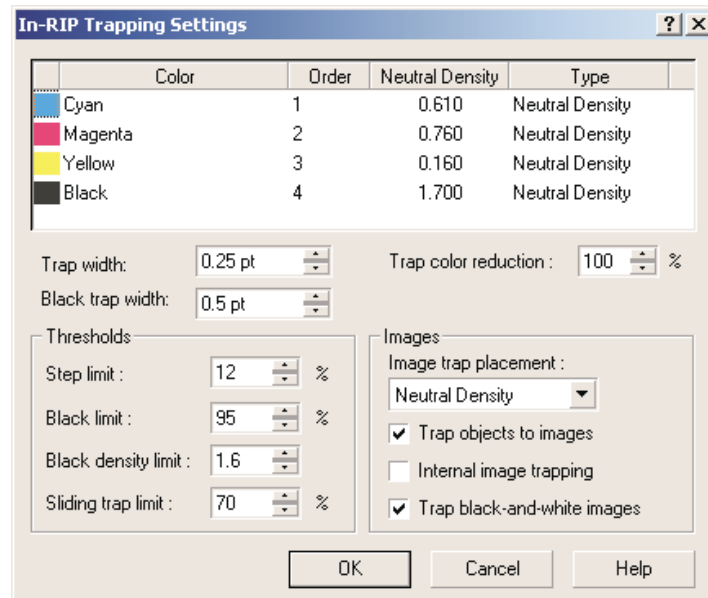
New preflight engine: Corel Ventura features a new, integrated preflight engine that gives you valuable feedback during final output. The new preflight engine provides you with many new warnings and the ability to save preflight styles for common workflows. You can access the preflight information from the Preflight tab found in the Print and Publish To PDF dialog boxes. The preflight engine warns you of potential errors specific to the type of output you are producing and lets you correct these errors before the document is produced.



Broken external links: Corel Ventura gives you the option of embedding imported graphics and text files directly into a publication or linking to the files externally. For externally linked files, Corel Ventura gives you advanced search options in case a file is moved or deleted. You have the option of searching for more than one file at a time, either within a single chapter or multiple chapters, and Corel Ventura will automatically fix broken links for any files found.

Document Import dialog box: The Import Text and Import Picture dialog boxes now include a “sort type” list box to allow you to search for filters by filename extension, description, and most recently used criteria.

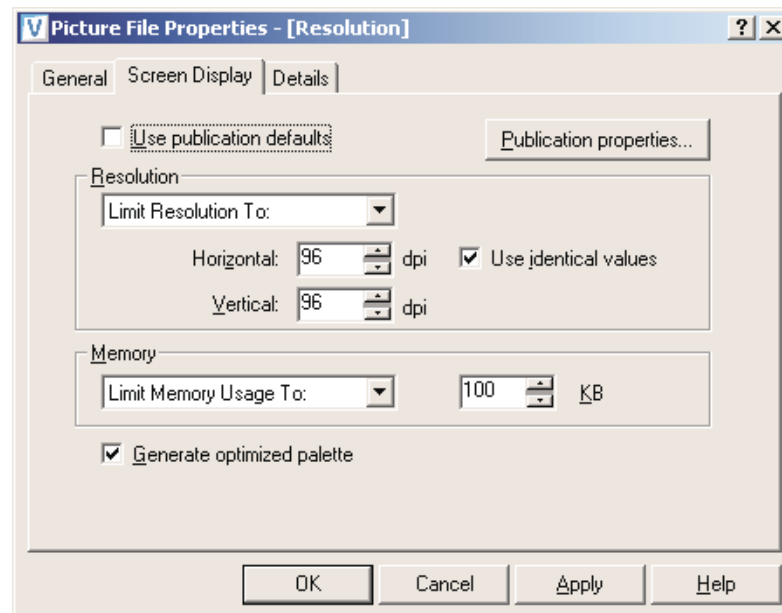
In-RIP trapping options: You can streamline your workflow by specifying trapping parameters in advance with a full range of In-RIP trapping options for Adobe® PostScript® 3™ output devices.



Enhanced customization controls: Corel Ventura features robust customization options that let you alter the user interface and commands to suit your workflow. You can create, import, and export workspaces, as well as customize the text of Menu items, ToolTips, icons, keyboard shortcuts, and context-sensitive menus. In addition, the new application transparency options allow you to make certain aspects of the user interface transparent, including menus and toolbars.

Bitmap effects: To help you streamline your workflow, more than 50 new bitmap effects have been added to Corel Ventura. One of the many advantages of bitmap effects is that you can make changes to embedded bitmaps within Corel Ventura, eliminating the reliance on other graphic software packages. You can modify the bitmap's orientation, size, resolution, convert a bitmap to a different color mode, or apply special effects such as various distortion, blur, or 3D effects.

Picture resolution: Corel Ventura lets you control the horizontal and vertical resolution of picture files. By changing these settings you can increase the speed with which a picture opens and displays on redraw.



Support for export picture file formats: Corel Ventura includes export filters for more than 30 picture file formats. Those file formats include

- Adobe® Illustrator® (AI)
- Adobe® Photoshop® (PSD)
- AutoCAD® (DXF/DWG)
- CALS Compressed Bitmap (CAL)
- CompuServe Bitmap (GIF)
- Computer Graphics Metafile (CGM)
- Corel PHOTO-PAINT® (CPT)
- Corel® Presentations™ Exchange (CMX)
- Encapsulated PostScript (EPS)
- Macintosh® PICT (PCT)
- MACPaint Bitmap (MAC)
- Micrografx® (DRW)
- OS/2® Bitmap (BMP)
- PaintBrush (PCX)
- Portable Network Graphics (PNG)
- Scalable Vector Graphic (SVG)
- SCITEX® CT Bitmap (SCT)
- TARGA® Bitmap (TGA)

- Enhanced Windows Metafile (EMF)
- FlashPix Image (KPX)
- Frame Vector Metafile (FMV)
- GEM File (GEM)
- GEM Paint File (IMG)
- HPGL Plotter File (PLT)
- JPEG Bitmap (JPG)
- TIFF Bitmap (TIF)
- Wavelet Compressed Bitmap (WI)
- Windows Bitmap (BMP)
- Windows Metafile (WMF)
- WordPerfect Graphic (WPG)
- XPixmap Image (XPM)

Support for import picture file formats: Corel Ventura contains import filters for more than 40 picture file formats. Those file formats include

- Adobe Illustrator (AI)
- Adobe Photoshop (PSD)
- Adobe Portable Document Format (PDF)
- AutoCAD (DXF/DWG)
- CALS Compressed Bitmap (CAL)
- CompuServe Bitmap (GIF)
- Computer Graphics Metafile (CGM)
- Corel CMX Compressed (CPX)
- Corel Presentations Exchange (CMX)
- Corel® Painter™ (RIF)
- Corel PHOTO-PAINT (CPT)
- CorelDRAW® (CDR)
- CorelDRAW Compressed (CDX)
- Encapsulated PostScript (EPS)
- Enhanced Windows Metafile (EMF)
- Frame Vector Metafile (FMV)
- Macintosh PICT (PCT)
- MACPaint Bitmap (MAC)
- MET Metafile (MET)
- Micrografx® (DRW)
- Micrografx Designer® (DSF)
- NAP Metafile (NAP)
- OS/2 Bitmap (BMP)
- PaintBrush (PCX)
- Picture Publisher® (PP4, PP5)
- Portable Network Graphics (PNG)
- PostScript Interpreted (PS, PRN)
- Scalable Vector Graphic (SVG)
- SCITEX CT Bitmap (SCT)
- TARGA Bitmap (TGA)

- FlashPix Image (KPX)
- Macromedia® FreeHand® (FH)
- GEM Paint File (IMG)
- GEM File (GEM)
- HPGL Plotter File (PLT)
- JPEG Bitmap (JPG)
- Kodak Photo-CD Image (PCD)
- TIFF Bitmap (TIF)
- Visio (VSD)
- Wavelet Compressed Bitmap (WI)
- Windows Bitmap (BMP)
- Windows Metafile (WMF)
- WordPerfect Graphic (WPG)
- XPixMap Image (XPM)

Language module: The Language module gives you access to writing tools, including the spelling checker, thesaurus, and Grammatik, based on the languages you have installed (not all language tools are available for all languages). Corel Ventura includes language modules for the following languages:

- Afrikaans
- Catalan
- Czech
- Danish
- Dutch
- English - Australia
- English - Canada
- English - U.K.
- English - U.S.
- Finnish
- French - Canada
- French - National
- Galacian
- German - National
- German - Swiss
- Greek
- Icelandic
- Italian
- Norwegian
- Polish
- Portuguese - Brazil
- Portuguese - Portugal
- Russian
- Slovak
- Spanish - American
- Spanish - National
- Sweden
- Tswana
- Turkish
- Xhosa
- Zulu

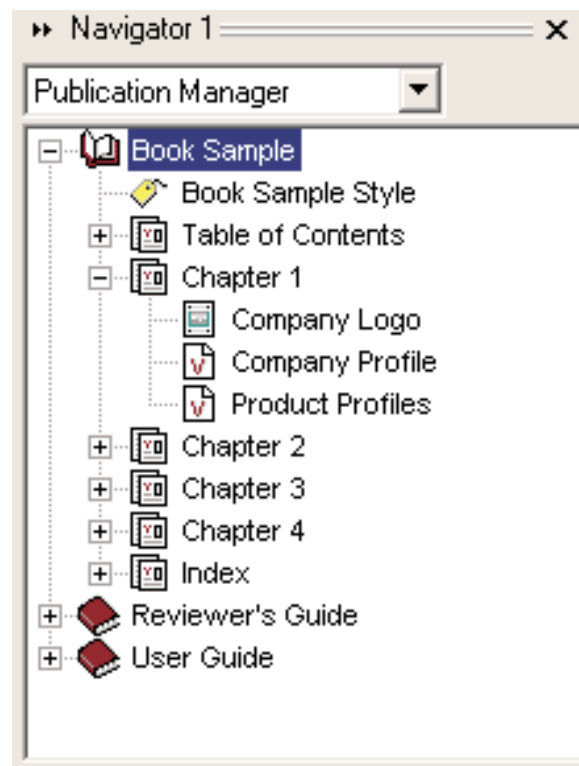
Key Features of Corel Ventura® 10

For business publishing, Corel Ventura 10 is a powerful application created for publishing structured and complex publications. Designed to output for print, electronic media, or the Web, Corel Ventura offers professional publishers everything needed to create, maintain, and output long, structured, text- and graphic-intensive publications.

Publication management

Corel Ventura includes many timesaving features to help you manage your publishing projects.

Navigator: The navigator is a powerful feature that helps you manage your publications. From the navigator window, you can easily move through multiple publications; drag and drop publication elements within the navigator window or between publications; manage

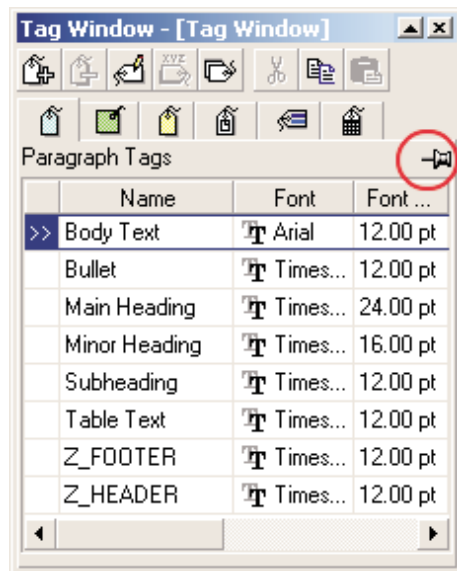


text and graphic properties; and create and view indexes, page tags, tables of contents, markers, and cross-references. The navigator also lets you easily determine whether text and picture files are embedded or externally linked, and if external links are broken. Broken links can be fixed quickly using the browse functionality in the navigator.

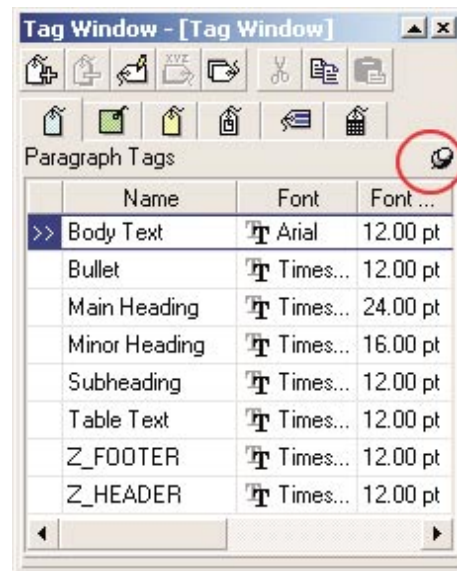
Tags: Corel Ventura uses tags in the same way that other publishing applications use styles, to store formatting attributes associated with a publication element. Any content formatted with a tag can be easily updated by modifying the tag properties, resulting in all elements that share the same tag being updated simultaneously. Corel Ventura includes support for character, paragraph, frame, page, rule, and table tags.

Tag window: The Tag window is the main tool for managing the tags in a publication. From one centralized location, it allows you to create, apply, modify, import, and delete tags. You can also apply tags to a range of selected objects through drag-and-drop functionality or by double-clicking the tag name in the Tag window.

Tag window push-pin icon: The push-pin icon that appears in the Tag window is a new feature to Corel Ventura that lets you toggle between context-sensitive and static states. In earlier versions, the state of the Tag window was context sensitive, depending entirely on what you selected in the publication. For example, if you selected a block of text, then the character tag list would display in the Tag window. Conversely, if you clicked in the body of a publication, then the paragraph tag list would display.



Push-pin icon: Context-sensitive state



Push-pin icon: Static state

Corel Ventura gives you control of this functionality. By using the push-pin icon to toggle between states, you can decide which state best suits your workflow. The context-sensitive state displays available tags for the selected tag type. The static state displays available tags for the last user-selected tag type, regardless of where you click in the active publication.

Page tags: Corel Ventura uses page tags to control publication elements relating to page design, such as page orientation, size, and color; repeating headers and footers; and much more. A single publication can contain many different page tags.

Stylesheets: In Corel Ventura, a stylesheet is a collection of all the tags used in a publication, controlling the overall design of your publication and all elements relating to the appearance and placement of text and pictures. You can easily change, share, and link to stylesheets to update the layout of publications effortlessly.

Templates: When you create a publication with Corel Ventura, it is automatically based on the Default.vp template. The Default.vp template provides the layout for a publication and consists of publication elements such as chapters, frames, graphic objects, and a style sheet. You can specify an alternative template or modify the default template. Templates also store all settings associated with the application workspace, menu and toolbar layout, and settings in dialog boxes. You can create as many templates as required to streamline workflow for different publication types.

Copy editor view: Similar to Reveal Codes in WordPerfect, the copy editor view displays all text and publication markup. This allows you to quickly scroll through publications without waiting for graphics to redraw, view markup, and edit text.

Split window view: Corel Ventura includes many viewing options, including the popular split window view that lets users view the same document in multiple views. The top half of the screen can be used to view and edit a publication in copy editor view, while the bottom half of the screen displays real-time changes in page layout view. You can choose different magnification levels for each view.

Numbering: Corel Ventura features versatile numbering functionality. You can number chapters, pages, and figures or tables in frames. You can set the numbering options for each individual chapter in a publication. However, you can also continue the numbering options from a previous chapter. Corel Ventura automatically updates the numbering in a publication if you change the numbering style or rearrange the publication. You can also manually update numbering in a publication at any time.

OLE automation: OLE automation can be used to automate long and complicated manual processes that transfer data between two or more applications. For example, you may have a manual process that puts data into a spreadsheet to be used to create a presentation graphic. The graphic is then used in a publishing application such as Corel Ventura. By

using OLE automation, a program can be created that automatically performs these steps for you. Through its seamless integration capabilities, OLE automation gives you control over a variety of different applications and how they interact with each other.

Auto-pan tool: The Auto-pan tool lets you scroll through publications quickly, without using the keystrokes or scroll bars, giving you the functionality of the Microsoft® IntelliMouse® with your regular mouse.

Libraries: Library files are collections of items such as pictures, text files, and stylesheets, that are conveniently organized so that you can add them to your publications. Corel Ventura library files are useful for accessing items you want to organize. For example, you can create a library file for the items used often in publications, or for all the items used in a single publication. You can link library text files and stylesheets to your publications. Linking puts a copy of the text file or stylesheet in the publication, but also allows you, or other users, to edit the text file or stylesheet and save the changes in the Corel Ventura library file.

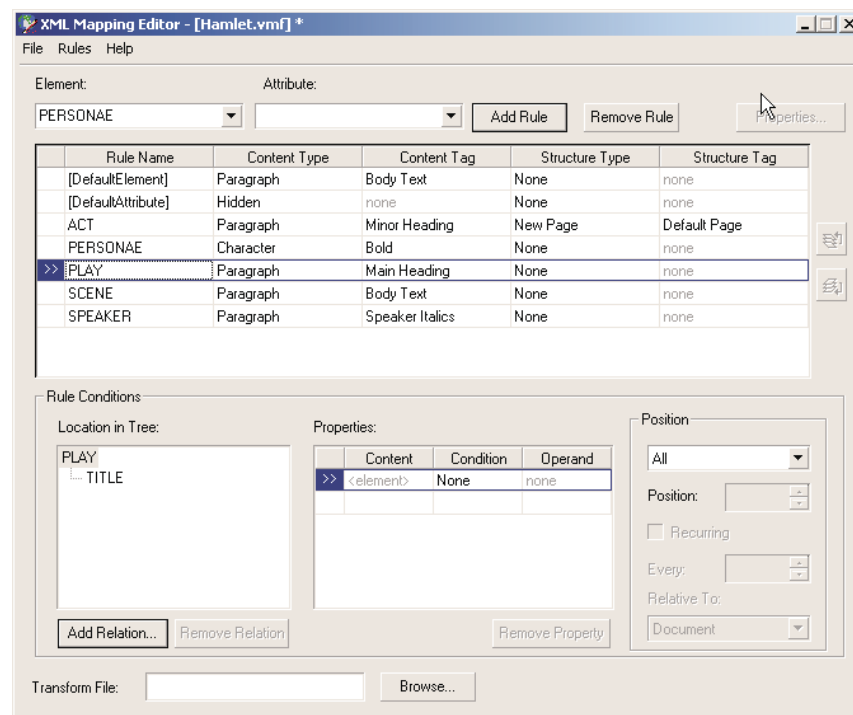
Conditional text: Conditional text is a powerful feature of Corel Ventura that allows you to create multiple versions of a master publication for separate targeted audiences. You can apply conditions to page, frame, paragraph, or table tags to hide or show specific information.

Document Import dialog box: The Import Text and Import Picture dialog boxes now include a Sort type list box to allow you to search for filters by filename extension, description, and most recently used criteria.

XML import

Corel Ventura includes many updated import/export filters for both text and graphics. New to this version is the ability to import well-formed XML documents. Corel Ventura gives you greater control over how text is imported, whether to import or ignore styles, and whether to import or ignore overridden properties.

XML Mapping Editor: The XML Mapping Editor is a utility that allows you to create mapping files for importing XML documents. A mapping file specifies and assigns formatting rules to different document elements, such as headings, tables, and images. During import, XML documents are transformed, laid out, and formatted according to user-specified rules in a mapping file. Mapping files can be created from any XML, Document Type Definition (DTD), or Schema (XSD) file.



Embedded or external XML documents: You can choose between embedding imported XML documents into your publication or linking to them externally. Linking to the imported XML documents externally allows you to edit and validate the source in an XML authoring tool of your choice, such as Corel XMetaL.

Publish to PDF

Options in the new Publish to PDF engine in Corel Ventura allow you to create PDF files identical to the original publications without relying on additional software, such as Adobe Acrobat Distiller.

Export ranges: You can export the current publication to PDF, or compile multiple publications into one PDF document. You can also choose to export a range of pages.

Enhanced text and font options: You can control how fonts are published in PDF documents. Fonts can be embedded in the document or exported as curves. You also have the option of subsetting fonts and including base 14 PostScript fonts in case fonts vary between computers.

PDF styles: To increase efficiency and streamline workflow, five default styles with recommended settings are included in Corel Ventura, including PDF for Document Distribution, PDF for Editing, PDF for Prepress, PDF for the Web, and PDF/X-1. You can customize your favorite PDF settings to suit your workflow and save them in the PDF Style list box, eliminating the need to define settings each time you publish to PDF.

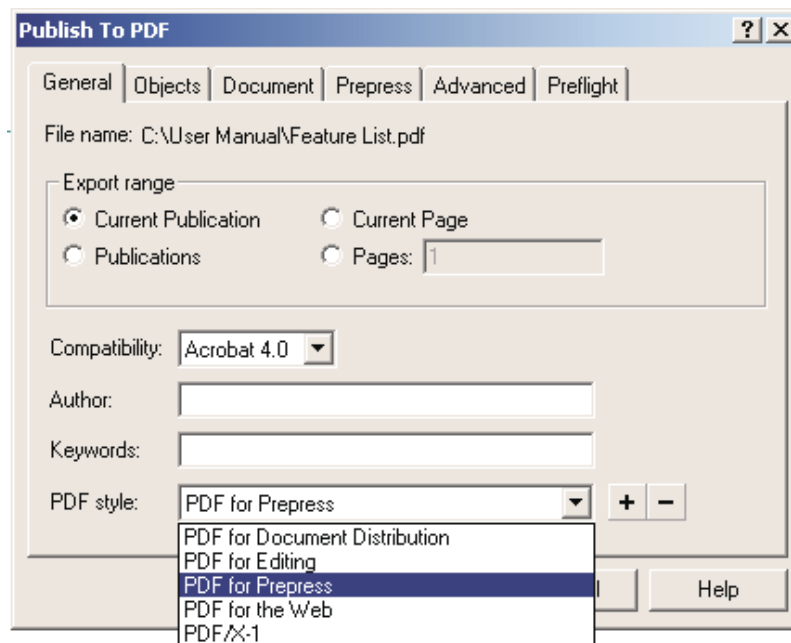


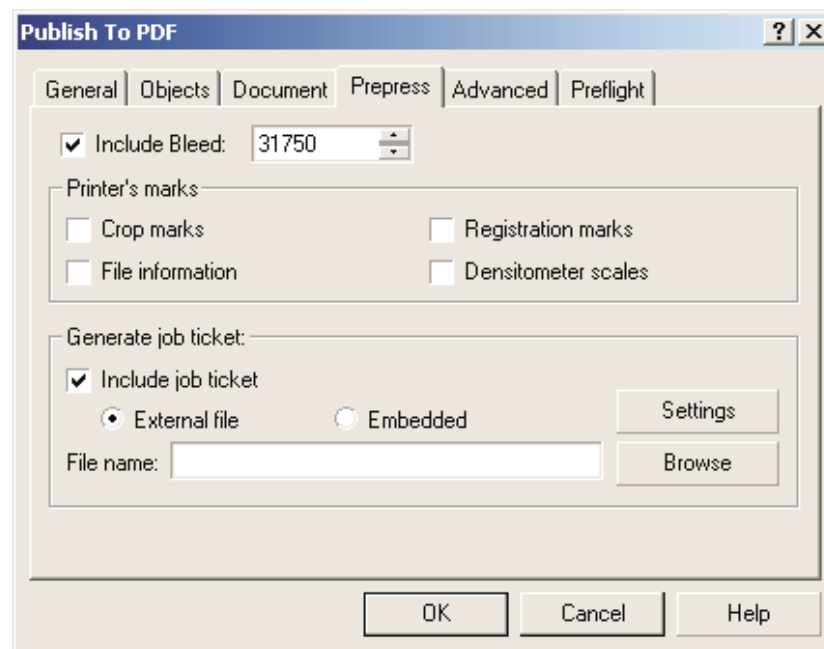
Image controls: Several image controls are included in Publish to PDF. In addition, two compression methods are available, including JPEG and LZW bitmap compression. You can also downsample color, grayscale, and monochrome bitmap images independently.

Bookmarks and thumbnails: You can include bookmarks and thumbnails in PDF documents, which make it easy for readers to navigate a file. You can also specify how PDF documents will look when they are opened in Adobe Acrobat Reader and Acrobat Exchange.

Job ticketing: Job ticketing informs a printing company about the production details for each job, such as setup and binding instructions. You can choose to include an embedded or external job ticket with final output. Job ticketing in Corel Ventura conforms to the Adobe PJTF specifications.

Color management options: The color management options in Publish to PDF let you apply an ICC profile when exporting. You can choose either a composite printer profile or a separations printer profile, with the option of setting specific profiles. You can also output objects as RGB, CMYK, or grayscale. These options let you manage images within PDF documents.

Prepress options: You can specify crop marks, calibration bars, file information, densitometer scales, and registration marks in PDF files.



Text import

In today's production environment, it is not uncommon for text and graphics to come from many different sources. Corel Ventura includes extensive import filters to improve efficiency and facilitate collaboration in gathering content from several sources. In addition, the RTF import filter for Corel Ventura has been rewritten for virtually seamless importing of paragraph and character styles from popular word processors such as Microsoft® Word and WordPerfect.

Enhanced support for character and paragraph styles: When a unique character or paragraph style — with no Corel Ventura tag equivalent — is imported, a new tag is created by the application. The new tag retains all the formatting attributes of the imported style, including tag name. However, if there is already a Corel Ventura tag equivalent, no new tag is created. Instead, the formatting attributes of the existing Corel Ventura tag take precedence.

Text Import dialog box: The Text Import dialog box provides you with a number of choices, including several new options, for how text is imported into Corel Ventura. You may choose to insert text at the cursor or to add it to the file list for placement into the publication at a later time. You may also select the Export on Save option, which allows you to create a linked text file for any named text file in a publication. Edits made to linked files are automatically reflected in the publication when it is updated. This option is ideal when sharing and collaborating on files across a network.

Import or Ignore options: To maximize your control and efficiency when managing content created by multiple contributors, Corel Ventura includes more options for how text is imported. You can choose to import or ignore styles as well as import or ignore overridden properties.

Supported text file formats: Corel Ventura contains filters that specify how the application should handle text imported from many sources, including

- Adobe® FrameMaker® 3.0, 4.0, 5.0 (MIF)
- Ami Pro® (SAM)
- ANSI text (TXT)
- ASCII text (TXT)
- ASCII text (8-bit) (TXT)
- Corel VENTURA® Generated (GEN)
- Corel® WordPerfect® 6, 7, 8, and WordPerfect 9, 10 (WPD)
- Corel WordPerfect 5.1 (WP5)

- Corel WordPerfect 4.2 (WP4)
- Corel WordPerfect 1.0, 2x for Macintosh (WPM)
- Microsoft Word 97/2000 (DOC)
- Microsoft Word 6.0/7.0 (DOC)
- Microsoft Word 3.0, 4.0, 5.0, 5.5 (DOC)
- Microsoft Word for Windows 2x (DOC)
- Microsoft Word 4.0, 5.0 for Macintosh (DOC)
- RTF
- SGML
- WordStar 2000 (WSD)
- WordStar 7.0 (WSD)
- WordStar 5.0, 5.5, 6.0 (WSD)
- WordStar 3.3, 3.31, 3.45, 4.0 (WSD)
- WordStar for Windows 1X, 2.0 (WSW)
- XML
- Xywrite for Windows 4.0 (XY)

Support for text formatting attributes: Corel Ventura provides built-in support for other text formatting attributes supported by Microsoft Word and WordPerfect. The text formatting attributes that are retained when importing into Corel Ventura include

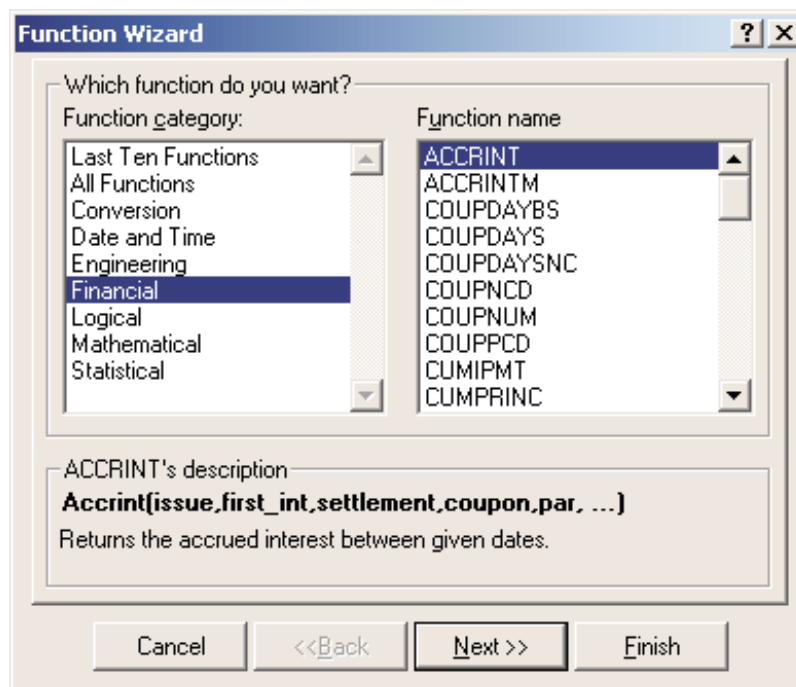
- | | |
|-----------------------|----------------------------------|
| • font face | • font color |
| • font size | • bold |
| • italics | • underline — single and double |
| • word only underline | • strike-thru |
| • small caps | • subscript |
| • superscript | • all caps — Microsoft Word only |

Tables

Corel Ventura includes robust table creation and formatting features. You can insert text, graphics, equations, hyperlinks, formulas, or any of 200 functions included with the application. Other options include adding custom rules and shading to the entire table or selected cells, rotating and skewing tables, merging and splitting cells, automatically filling cells, and various sorting options. In addition, table cells can contain multiple paragraph tags, which provide great flexibility in the formatting, spacing, and flow of text.

Table tags: All tables in Corel Ventura are now associated with table tags. When a tag's properties are modified, all tables formatted with that tag are automatically updated. In addition, tag attributes are stored with a publication's stylesheet. This can save time because, instead of generating new tags for each publication, you can import complete stylesheets, or individual tags from a stylesheet, into your publication.

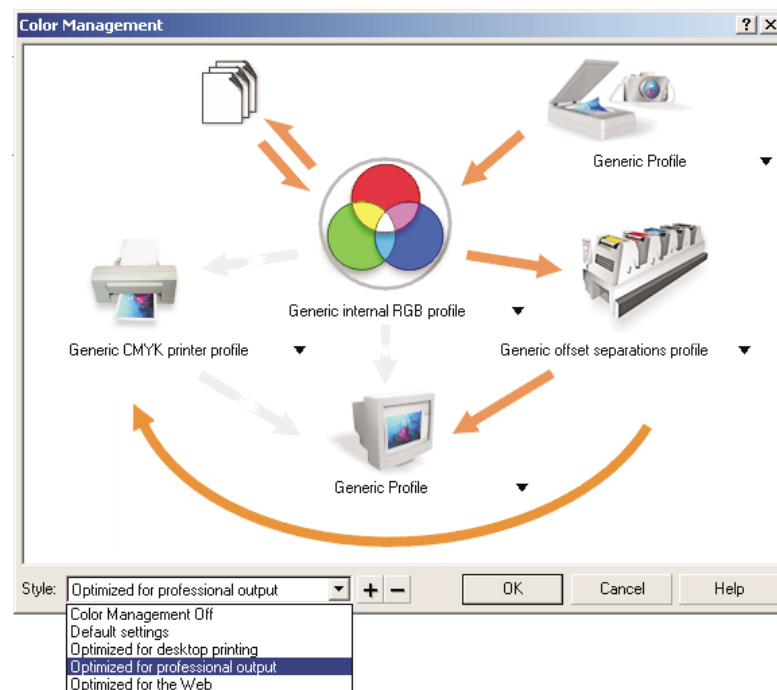
Function wizard: Corel Ventura lets you add formulas or functions to tables so that you can perform spreadsheet calculations on table data. Many of the common formulas and functions found in spreadsheet applications are available, including financial, scientific, engineering, date and time, and conversion functions. Corel Ventura provides the Function wizard to facilitate including functions and formulas in your publication's tables.



Color management

Corel Ventura incorporates industry-leading ColorSync technology, which provides a comprehensive framework for matching and managing color information between input devices, output devices, displays, and applications. The main benefit of ColorSync is that it ensures accurate color reproduction among devices and applications that also take advantage of ColorSync technology, such as Adobe Photoshop. This saves you time and increases your productivity.

By combining the essential color management options in one dialog box, Corel Ventura makes color management intuitive. You can also take advantage of predefined color management styles (for the Web, for desktop printing, and for professional output), removing the guesswork from color management. In addition, you have the flexibility of creating and saving your own color management profiles.



Embedded ICC profiles: You can embed ICC color profiles in various formats, such as Portable Document Format (PDF), JPEG, TIFF, CorelDRAW (CDR), Corel PHOTO-PAINT (CPT), and encapsulated PostScript (EPS). You can also extract color profiles from images with embedded profiles. In addition, to ensure accurate color reproduction between applications, you can specify how images with embedded profiles are treated when imported into Corel Ventura.

Choice of internal RGB space: You can customize the internal RGB space in which colors are managed. This increases color consistency between Corel Ventura and third-party applications. Several choices of internal profiles are included.

Apply ICC profile: By specifying a source ICC profile in Corel Ventura, you can convert images that do not contain embedded ICC profiles into the RGB space of the application. ICC profiles can also be applied to images that are acquired from a scanner or other TWAIN sources to ensure accurate color representation.

Multiple color management modules: You can choose between Kodak and Windows Image Color Matching (ICM 2.0) color management modules.

New rendering intents: Corel Ventura now offers relative and absolute colorimetric rendering intents, providing more accurate color management between applications.

Profile linking for printers: You can individually link ICC color profiles to different printers. Once defined, Corel Ventura automatically uses the appropriate profile for the selected printer, which saves you time.

Print features

Enhanced Print To File options: Enhanced Print To File options in the Print dialog box eliminate the need to print an entire document to a single file.

Enhanced imposition layout: The imposition layout tools combine the Signature Layout and N-up Format capabilities from Corel VENTURA 8 into one feature. This is to increase imposition usability and flexibility, and to enhance specific shortcomings in the imposition features from version 8. The imposition layout tools are capable of advanced signature layouts, including customized group sets of signatures, advanced binding options, page rotation, fold marks, and gutters.

Enhanced print options: New options in the Print dialog box let you turn off overprints specified for objects in the document. You can also output all bitmap images as RGB, CMYK, or grayscale. A new printing tab in the Tools, Options dialog box gives users faster and easier access to those options previously located in the Special Settings section on the Miscellaneous tab in the Print dialog box.

PDF marks: This option adds annotations to PostScript output that are useful when using Adobe Acrobat Distiller. With these markings, hyperlinks and bookmarks are maintained when the document is converted to a PostScript file and PDF.

Downsample bitmap images: By downsampling bitmap images, you can improve print speed when printing a draft of a document to proofread, or when printing documents with large bitmap images.

Rasterize page: Rasterization prepares a page for display or printing by turning text and graphics into a bitmap image. Enabling the Rasterize Page check box on the Miscellaneous tab in the Print dialog box lets you resolve printing problems that may occur with non-PostScript printer drivers. Rasterization can also improve print speed when printing a draft of a document to proofread.

Enhanced Duplexing wizard: The enhanced Duplexing wizard helps you set up duplexing on your desktop printer using fewer steps and only one sheet of paper.

PostScript Printer Description (PPD) support: Corel Ventura includes direct parsing support for PostScript Printer Description (PPD) files. You can now access PPDs for printer setup directly, rather than relying on standard printer drivers supplied with the operating system.

Device-independent PostScript: You can create multipage, device-independent PostScript files that adhere to the Adobe Document Structuring Convention (DSC). This feature is useful for bringing PostScript files into trapping and imposition programs that do not work well with driver-generated PostScript.

Prepare For Service Bureau wizard: The Prepare For Service Bureau wizard has been enhanced to let you automatically gather all files associated with a document, such as fonts and linked images, to provide a service bureau with everything necessary to open and output the document. The Prepare For Service Bureau wizard has a second mode that runs from a profile supplied by the service bureau, automatically setting print options and guiding you through the process.

Print styles: Similar to the PDF styles feature, you can create and save custom Print styles for repeated use with certain types of output which helps to save time and automate workflow.

Corel Corporate Profile

Founded in 1985, Corel Corporation is a leading technology company that offers software for home and small business users, creative professionals and enterprise customers. With its headquarters in Ottawa, Canada, Corel's common stock trades on the Nasdaq Stock Market under the symbol CORL and on the Toronto Stock Exchange under the symbol COR.

COREL CORPORATION

1600 Carling Avenue
Ottawa, Ontario
Canada K1Z 8R7

Web site: <http://www.corel.com>

General telephone: 1-613-728-8200

Reader contact information: 1-800-77-COREL

Fax: 1-613-728-9790

Media inquiries: media@corel.com

For more information about Corel Ventura 10, please visit www.corel.com/ventura10.