

COREL[®]
Snapfire[™]



Reviewer's Guide

Copyright 2006 Corel Corporation. All rights reserved.

Corel Snapfire Family Reviewer's Guide

Protected by U.S. Patents 5652880; 5347620; 5767860; 6195100; 6385336; 6552725; 6657739; 6731309; 6825859; 6633305; Patents Pending.

Product specifications, pricing, packaging, technical support and information ("specifications") refer to the retail English version only. The specifications for all other versions (including other language versions) may vary.

INFORMATION IS PROVIDED BY COREL ON AN "AS IS" BASIS, WITHOUT ANY OTHER WARRANTIES OR CONDITIONS, EXPRESS OR IMPLIED, INCLUDING, BUT NOT LIMITED TO, WARRANTIES OF MERCHANTABILITY, SATISFACTORY QUALITY, MERCHANTABILITY OR FITNESS FOR A PARTICULAR PURPOSE, OR THOSE ARISING BY LAW, STATUTE, USAGE OF TRADE, COURSE OF DEALING OR OTHERWISE. THE ENTIRE RISK AS TO THE RESULTS OF THE INFORMATION PROVIDED OR ITS USE IS ASSUMED BY YOU. COREL SHALL HAVE NO LIABILITY TO YOU OR ANY OTHER PERSON OR ENTITY FOR ANY INDIRECT, INCIDENTAL, SPECIAL, OR CONSEQUENTIAL DAMAGES WHATSOEVER, INCLUDING, BUT NOT LIMITED TO, LOSS OF REVENUE OR PROFIT, LOST OR DAMAGED DATA OR OTHER COMMERCIAL OR ECONOMIC LOSS, EVEN IF COREL HAS BEEN ADVISED OF THE POSSIBILITY OF SUCH DAMAGES, OR THEY ARE FORESEEABLE. COREL IS ALSO NOT LIABLE FOR ANY CLAIMS MADE BY ANY THIRD PARTY. COREL'S MAXIMUM AGGREGATE LIABILITY TO YOU SHALL NOT EXCEED THE COSTS PAID BY YOU TO PURCHASE THE MATERIALS. SOME STATES/COUNTRIES DO NOT ALLOW EXCLUSIONS OR LIMITATIONS OF LIABILITY FOR CONSEQUENTIAL OR INCIDENTAL DAMAGES, SO THE ABOVE LIMITATIONS MAY NOT APPLY TO YOU.

Corel, the Corel logo, CorelDRAW, MAIL, Painter, Paint Shop Pro, Picture Tubes, PhotoSafe, WinZip, and WordPerfect are trademarks or registered trademarks of Corel Corporation and/or its subsidiaries in Canada, the U.S., and/or other countries.

Microsoft, DirectX, Outlook, and Windows are registered trademarks of Microsoft Corporation in the United States and/or other countries. QuickTime and the QuickTime logo are trademarks used under license. The QuickTime logo is a registered trademark of Apple Computer, Inc. in the United States and other countries. Other product, font, and company names and logos may be trademarks or registered trademarks of their respective companies.



Contents

- 1 | Introducing the Corel Snapfire Family 1**
 - Corel Snapfire 1
 - Corel Snapfire Plus..... 1
 - Corel Snapfire Plus SE 3
 - Minimum System Requirements 3
 - Recommended System Requirements 3
 - Additional Requirements for Selected Features 3

- 2 | Key Features of the Corel Snapfire Family5**
 - Organize 5
 - Enhance 7
 - Create 12
 - Share 14
 - Protect 15

- 3 | Customer Support and Other Resources17**
 - Customer Care..... 17
 - Warranty Support 17
 - Personal Telephone Support 17
 - Enterprise Level Support 18
 - Professional Services 18
 - Partnership Program..... 18
 - Zoom-In Newsletter 18
 - Free Support..... 18

- 4 | About Corel 19**



Introducing the Corel® Snapfire™ Family

Corel® Snapfire™ is the smart alternative to traditional digital camera software. With automatic downloads, quick photo fixes, straightforward organization and sharing options, and an array of creative project templates, it's never been so fun and easy to do more with your photos. With drag-and-drop simplicity, you can quickly and easily create impressive photo projects and slide shows that are sure to entertain friends and family.

The new Corel Snapfire Family is built on the legendary technology of Corel® Paint Shop Pro®. It was designed to make common photo tasks easier so that you can spend more time having fun and sharing your photos. With a modular application architecture, users can add more advanced functionality as their experience and confidence with the software grows.

Each product in the Corel Snapfire Family provides a convenient Message Center which delivers quick tips, photo ideas, and tutorials that guide users to the outstanding features available to them. These messages can be updated automatically through the Web, and also include product news and special offers.

Corel® Snapfire™

As a free download, Corel Snapfire provides everything you need to easily organize, enhance, and share your digital photos. You can quickly and easily apply photo fixes, as well as create photo projects and slide shows that are perfect for sharing.

Corel® Snapfire™ Plus

Corel Snapfire Plus offers all the basic organization and sharing options of Corel Snapfire, as well as more advanced, yet easy-to-use photo- and video-editing features. In addition, Corel Snapfire Plus provides more options for creating unique slide shows, additional project templates, and the PhotoSafe™ Backup system.

The following table illustrates the differences between Corel Snapfire and Corel Snapfire Plus.

Feature	Corel® Snapfire™	Corel® Snapfire™ Plus
Organize and Share		
Quick Print	✓	✓
E-mail Snapfire Shows	✓	✓
Download and show video	✓	✓
Include video in Snapfire Shows	✓	✓
Basic video editing		✓
Save Snapfire Show as video		✓
Full control over Snapfire Show transitions and effects		✓
Quick Disc		✓
Enhance		
Rotate	✓	✓
Crop	✓	✓
Quick Fix	✓	✓
Photo Doctor	✓	✓
Photo Fix	✓	✓
Red-eye correction	✓	✓
Convert to black-and-white, sepia	✓	✓
Resize photos		✓
Makeover tools		✓
Straighten		✓
Add frames and edges		✓
Add Picture Tubes™		✓
Add text		✓
Create		
Create album pages and greeting cards	✓	✓
Create calendars and collages	✓	✓
Create certificates and magazine covers		✓
Protect		
PhotoSafe™ Backup		✓

Corel® Snapfire™ Plus SE

Corel Snapfire Plus SE includes a 30-day preview of all the advanced photo- and video-editing features of Corel Snapfire Plus. When the preview period expires, the application reverts to the original Corel Snapfire state which you can continue to use for free.

Minimum System Requirements

- 500 MHz processor
- Windows® 2000 (with SP4) or XP (Home or Professional, with SP2)
- Microsoft® Internet Explorer 6.0 or greater
- 256 MB of RAM
- 500 MB of free hard disk space
- 1024 × 768 resolution display, 16-bit color display

Recommended System Requirements

- 1.0 GHz processor or faster
- Windows® XP (with SP2)
- 512 MB of RAM
- 500 MB of free hard disk space
- 1024 × 768 resolution display, 24- or 32-bit color display

Additional Requirements for Selected Features

- Outlook® Express, WordPerfect® MAIL™, or other MAPI-compliant e-mail software (to e-mail from the product)
- QuickTime® 7 or greater (to play MOV and MP4 movie files)
- DirectX® 9 (to play slide shows)
- CD-R, CD-RW, DVD-R/W, or DVD+R/W burner (to create PhotoSafe Backup discs and Quick Discs)



Key Features of the Corel® Snapfire™ Family

Corel Snapfire is the smart alternative to traditional digital camera software. By automating the chores associated with digital photography, it lets you focus on doing more with your photos. Whether you want to share photos with friends, create an entertaining Snapfire Show to preserve memories of a recent vacation, or simply enhance a few images, it's all easy and fun with Corel Snapfire.



Note: In this chapter, features that are exclusive to Corel Snapfire Plus are introduced by *orange italicized headings* and are accompanied by a fire icon in the margin.

Organize

With zero-click downloading, full-screen Quick Review, and the handy Find Photos command, Corel Snapfire takes the effort out of organizing your growing digital photo collection. Corel Snapfire also scans your computer's My Pictures folder, finds and catalogs all existing photos, and then gives you multiple options for browsing the collection. You can also have Corel Snapfire scan any folder in which you store photos.

Photo Downloader: Corel Snapfire offers the quickest and easiest way to transfer photos from your digital camera to your computer. It couldn't be more simple. Just plug in your camera or memory card, and select a downloading option. You can set the Photo Downloader to download automatically, to rotate photos automatically, or to clear memory card space by deleting photos that have been downloaded.

Give it a try

Using the Photo Downloader for the first time

- 1 Connect your camera to your computer or insert your memory card.
- 2 In the **Corel Photo Downloader**, choose one of the following options, and then click **OK**.
 - **Always start downloading automatically**
 - **Display this prompt each time**



The Corel Photo Downloader

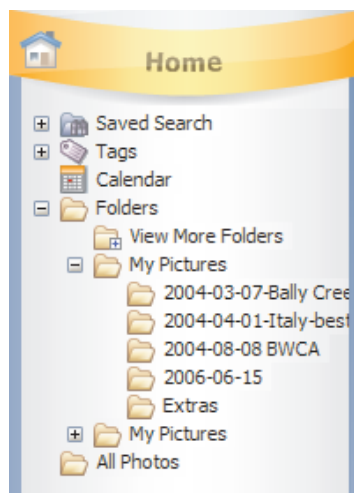
Full-screen Quick Review: When Corel Photo Downloader finishes, the Quick Review starts automatically. This full-screen slide show lets you view all the photos that have just been downloaded. You can stop the slide show to add tags, star ratings, captions, and comments to photos. During Quick Review, you can also delete photos, apply quick fixes, and copy photos to the photo tray for later tasks.



The Quick Review toolbar lets you control the slide show.

Video Support: With support for video, Corel Snapfire makes it easy to share video clips taken with your digital camera. You can use video clips in Snapfire Shows, and you can save Snapfire Shows as videos (AVI format).

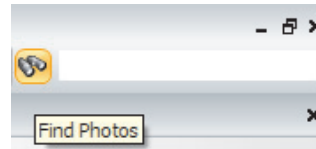
Multiple Viewing Options: Corel Snapfire gives you multiple options for browsing your photo collection. You can choose to view photos by Date, Calendar, All Photos, Tags, and Saved Searches.



Corel Snapfire lets you choose from multiple viewing options.



Find Photos: If you use text (as tags or captions) to help identify your photos, the Find Photos command will find those photos instantly. Simply enter text in the upper-right corner of the application, or click on the Find Photos button to perform an advanced search.



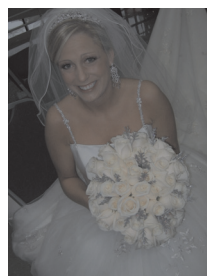
You can quickly unearth photos with the Find Photos command.

Full Support for EXIF and IPTC standards: Corel Snapfire Plus supports both the Exchangeable Image File Format (EXIF) and the International Press Telecommunications Council (IPTC) standards. In addition to storing digital camera settings, such as shutter speed, Corel Snapfire Plus saves user-entered data, such as tags or captions. Stored in the header of each photo, the added text information travels with the photo when you share it.

Enhance

With Corel Snapfire, it's fun and easy to enhance your favorite photos. You can get started immediately by choosing from simple, one-click features. In addition, the Photo Doctor is perfect for new digital camera owners or novice software users who may not be sure how to improve their photos.

Quick Fix: With this one-click feature, Corel Snapfire automatically adjusts a photo's color balance, contrast, clarity, and saturation. This feature shares the technology of the powerful One Step Photo Fix provided by Paint Shop Pro.

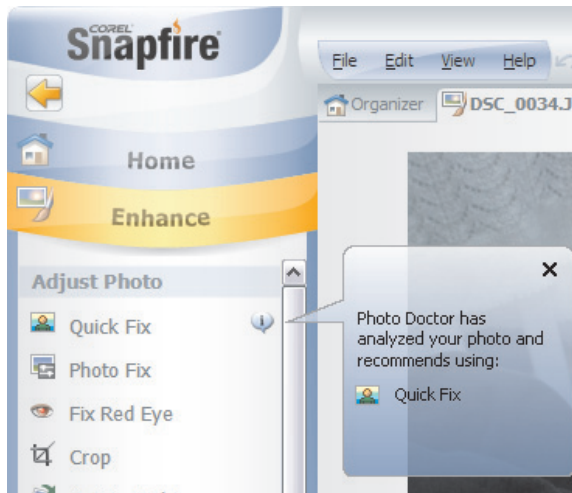


Before



After


Photo Doctor: During usability testing, Corel found that many users were unsure of when to use Quick Fix, and unaware of its benefits. To solve this problem, Corel Snapfire introduces the unique Photo Doctor. This feature analyzes each photo as it is opened and displays a special icon if Quick Fix may significantly improve the photo — helping to ensure that more of your photos look their best.



The Photo Doctor alerts you when Quick Fix will improve your photos.

Give it a try

Using Photo Doctor

- 1 On the Organizer page, double-click the thumbnail of a photo, or click **File ▶ Open ▶ Photo**.
- 2 On the **Enhance** panel, look for an “i”  icon next to **Quick Fix**. If the icon appears, Photo Doctor has determined that Quick Fix may improve your photo.
- 3 Position your cursor over the “i” icon. A message window will appear containing a suggestion from the Photo Doctor.
- 4 To apply the suggested fix, click **Quick Fix**.

Crop: You can instantly focus the attention of a photo and eliminate background distractions by using the Crop tool, which works similarly to your camera’s zoom except that you’ve already shot the photo. This handy tool also lets you instantly crop to standard photo sizes.



Before



After

Photo Fix: With simple sliders, this feature lets you adjust the brightness, contrast, warmth, saturation, and focus of a photo. You can preview the result of the fix, and further adjust the simple sliders until you are satisfied.

Red Eye: With Corel Snapfire, you can quickly and easily correct red eye in your photo subjects. You simply adjust the tool size to suit the size of the red eye you want to correct, and then click in the eye.



Before



After

Rotate: If your camera has a sensor that marks vertical photos, the Photo Downloader will automatically rotate those photos while they are downloading. If your camera does not mark vertical photos, Corel Snapfire lets you rotate photos with a single click. You can rotate 90 degrees right or left in either the Home or Enhance modes.

Easy Photo Effects: Corel Snapfire includes simple effects that let you give your photos a vintage look. With just one click, you can transform color photos into black and white, or sepia tones.



Before



Black-and-White



Sepia



Straighten tool: Corel Snapfire Plus includes the Straighten tool which lets you quickly align crooked photos and automatically crop off the edges.



Before



After

Give it a try

Using the Straighten tool

- 1 On the Organizer page, double-click the thumbnail of a photo, or click **File ▶ Open ▶ Photo**.
- 2 On the **Enhance** panel, click the **Straighten** tool.
A straightening bar with end handles appears on the photo.
- 3 Drag each end handle of the straightening bar to align it with a vertical or horizontal line, such as a horizon or telephone pole.
- 4 Double-click in the image area to straighten the photo, or on the **Enhance** panel, click **Apply**.

Makeover tools: With the incredible Makeover tools, Corel Snapfire Plus puts the power of professional retouching in your hands. These powerful tools make it easy to touch-up the people in your photos, letting everyone put their best face forward. These professional-strength tools include:

- **Blemish Remover** – adjust tool size and then click to remove blemishes



Before



After

- **Teeth Whitener** – click anywhere on teeth to brighten and accentuate every smile



Before



After

- **Suntan Brush** – brush on color to warm-up pale complexions



Before






After



Give it a try

Using the Makeover tools


- 1 On the Organizer page, double-click the thumbnail of a photo with a person whose look you want to touch up, or click **File ▶ Open ▶ Photo**.
- 2 On the **Enhance** panel, click **Makeover**.
- 3 Choose one of the following Makeover tools:
 - **Blemish Fixer** 
 - **Toothbrush** 
 - **Suntan** 
- 4 If necessary, adjust the value in the **Size** and **Strength** boxes.
- 5 To apply the makeover fix, click in the appropriate area of the photo.



Picture Tubes™: Corel Snapfire Plus includes Picture Tubes™, a collection of professionally-designed artistic elements which let you add extra personality to your photos. For example, you can add butterflies to a picnic setting, or frame a picture with flowers. A longtime favorite of Paint Shop Pro users, Picture Tubes are available in a variety of themes, including Animals, Artistic, Embellishments, Nature, Photo Objects, and Plants and Leaves.

Give it a try

Using Picture Tubes™

- 1 On the Organizer page, double-click the thumbnail of a photo, or click **File ▶ Open ▶ Photo**.
- 2 On the **Enhance** panel, click **Add Picture Tubes**, click the **Select a Picture Tube**  icon, and choose a Picture Tube from the drop-list.
- 3 If necessary, adjust the following:
 - **Size** – determines the size of the Picture Tube graphics
 - **Spacing** – determines the distance between Picture Tube graphics
- 4 In the image window, click to apply one Picture Tube image or drag to paint with multiple Picture Tube images.



Frames and Edges: Easily make your photos stand out with unique frames and edges. Corel Snapfire Plus includes an array of picture frames and photo edge effects which you can use to add personalized, finishing touches to your photos.



Text tool: With Corel Snapfire Plus, you can use the Text tool to add fun titles and captions to your photos. The Text tool lets you choose from many standard font types, and lets you adjust font size, style, alignment, and color.

Create

With Corel Snapfire, it's easy to do more with your photos than you ever thought possible. In just minutes, you can make visually stunning photo creations simply by dropping your photos into professionally designed templates. You can choose from album pages, calendars, collages, greeting cards, and more. For easy sharing, you can print your photo projects or e-mail them to friends and family.

You can further express your creativity with Snapfire Shows, which take you beyond traditional photo sharing. These easy-to-create slide shows are the best way to share multiple photos.

Snapfire Show: You can easily create an entertaining Snapfire Show to impress friends and family. You can enliven Snapfire Shows by adding your own music, cool transitions, and fun motion effects that zoom in and across your photos. In addition, it's easy to add video clips taken with your digital camera to Snapfire Shows.

Creative Photo Projects: Corel Snapfire includes many creative templates designed to inspire you to do more with your photos. With drag-and-drop simplicity, you can easily create stunning album pages, greeting cards, calendars, and collages.



You can simply drag and drop photos to create remarkable collages and other photo projects.



Give it a try

Creating a Collage

- 1 On the Tasks panel, click **Home**.
- 2 On the Organizer page, select the photos you want to use and drag them to the **Photo Tray**.
- 3 On the Tasks panel, click **Create**.
Thumbnail previews of available layouts display in the Choose a Project panel.
- 4 On the Choose a Project panel, click **Collage**.
- 5 Drag photos from the Photo Tray into the cells of the layout.
- 6 To adjust the position of any photo, click the photo and use any of the buttons in the **Photo Adjustments** area on the Create panel.
- 7 Click the **Save** button.

Additional Photo Projects: In addition to extra album page, calendar, collage, and greeting card templates, Corel Snapfire Plus also includes two exclusive project categories — magazine covers and certificates.

Advanced Snapfire Shows: With Corel Snapfire Plus, you get more options for creating outstanding multimedia Snapfire Shows. In addition to support for music tracks and video clips, Corel Snapfire Plus lets you control the specific transitions and timing between each slide. You also have full control over zoom and pan motion effects.

Give it a try

Creating a Snapfire Show

- 1 On the Tasks panel, click **Home**.
- 2 On the Organizer page, select the photos that you want to use and drag them to the **Photo Tray**.
- 3 On the Tasks panel, click **Show**, and drag and drop photos from the **Photo Tray** onto the **Storyboard**.
- 4 Select a photo on the **Storyboard**, click **View Slide Settings** on the **Show** tab, and adjust any of the following settings:
 - **Duration** – controls the length of time each slide is displayed
 - **Motion Effects** – controls the start and end frames for motion effects
 - **Transition** – controls the length of the transition between slides
- 5 On the **Show** panel, click **Save As Snapfire Show**.
- 6 In **File name** area of the Save As dialog box, type a name for your Snapfire Show and click **Save**.

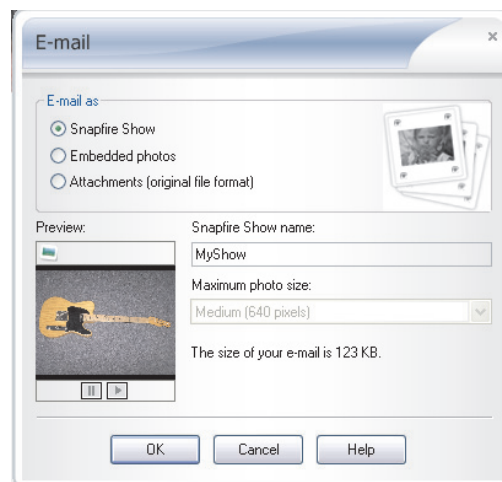
Video Editing: With Snapfire Shows, you can do more with the video clips taken with your digital camera, including trimming video clips and extracting specific frames. You can also save your Snapfire Shows as movie files at a variety of sizes ranging from small (320 × 240 pixels) to HDTV (1920 × 1080 pixels).



Share

From e-mailing and printing to ordering prints online, Corel Snapfire makes it easy to share your photos.

E-mail: For fast and flexible e-mail options, nothing beats Corel Snapfire. For a fun and entertaining way to share multiple photos, you can e-mail a Snapfire Show. You can also embed photos in the body of an e-mail to ensure recipients can immediately view your photos. For the highest level of compatibility, you can also attach photos to an e-mail.



Corel Snapfire gives you fast and flexible e-mail options.

Give it a try

E-mailing photos

- 1 On the Organize page, select the photos you want to e-mail.
- 2 On the Tasks panel, click **Share as E-mail**.
- 3 In the E-mail dialog box, choose one of the following options from the **Email As** area:
 - **Snapfire Show** – creates a slide show from the selected photos
 - **Embedded Photos** – displays photos in the body of an e-mail
 - **Attachments** – sends items as individual file attachments
- 4 Click **OK** to apply the settings and start your e-mail application.
- 5 Complete the **To**, **Subject**, and **Message** fields, and click **Send**.

Quick Print: The Quick Print feature lets you choose from a variety of automatic layouts, such as 4×6, 5×7, 8×10, wallet-size, and more.

Order Prints Online: Corel Snapfire includes support for popular photo-sharing Web sites. You can easily order prints for pickup from local CVS stores, or for mail delivery through webshots (both services available in North America only).

Protect

By automating the process, Corel Snapfire Plus takes the effort out of backing up your digital photo collection. Many people may not realize that storing photos only on their computer leaves those precious memories vulnerable to computer viruses and hard disk failures. Without requiring additional burning software, Corel Snapfire Plus lets you back-up your entire digital photo collection.



PhotoSafe™ Backup: With Corel Snapfire Plus, it's never been easier to preserve and protect your digital photos on a CD or DVD. With just two clicks, the PhotoSafe Backup system prevents the loss of your precious memories.



The PhotoSafe Backup system helps you protect your photos.

Give it a try

Using PhotoSafe™ Backup

- 1 On the Tasks panel, click **Home**, and then click **PhotoSafe Backup**.
- 2 In the PhotoSafe Backup dialog box, choose one of the following options from the **Backup Type** area:
 - **All photos not yet backed up**
 - **All photos**
- 3 Click **Burn**.



Quick Disc: Corel Snapfire Plus also lets you burn selected photos to CD or DVD. The Quick Disc feature is perfect for sharing photos with friends and family, or for taking photos to a store to order prints.



Customer Support and Other Resources

Corel provides a multi-tiered offering of support options for our business and graphics applications designed to accommodate consumer, small business and corporate customers. Additional information about global availability of our support services is located on the Corel web site at: www.corel.com/support.

Customer Care

Assistance with general and sales inquiries is offered on a toll-free line.

Warranty Support

Corel's Warranty Support consists of one courtesy telephone support call and unlimited Web-based electronic support. This is designed to help customers gain a technical understanding of new features as well as issues related to installation and product defects, including crashes and errors caused by the Corel software. OEM or bundled software releases are not offered with e-mail support.

Personal Telephone Support

Many customers choose to speak directly to a Corel support technician over the telephone. Live person-to-person support provided on a toll-free line and is designed for individual, small business, academic, trial version, and OEM users.

A support incident is the resolution of one technical question, problem or issue, regardless of the number of telephone calls required to resolve it, and includes assistance with How-To's applied to a sample document (we can show you how the feature works, but not how to implement the feature within your file), troubleshooting technical issues and documents, installation, configuration and setup (stand-alone), migration from one version to another.

Enterprise Level Support

Designed for corporate clients who require account management services and access to Corel's most skilled support personnel. This enhanced level of support is selected by organizations that employ dedicated support professionals, have centralized technical management, or require specialized support. Corel's experienced support team of specialists deliver high-quality support and provide the resources necessary to maintain a mission-critical environment. Needs for your entire enterprise are addressed from integration issues, open document management API (ODMA), network configuration, thin-client platforms, large-scale network application roll outs and in-house developer requirements.

Professional Services

The Corel Professional Services team builds solutions for international market leaders in government and Fortune 1000 organizations, including aerospace, defense, manufacturing, utilities, retail, and financial services. Our expertise resides in deploying new technology solutions, software deployment, application automation and third party integration support, solution sets, and training.

Partnership Program

Designed with maximum flexibility to meet the needs of diverse range of partners, the Corel Partner Program offers unparalleled tools and support, including the ultimate information resource, Corel® Connected.

Zoom-In Newsletter

A must-have for digital camera owners, this free monthly newsletter provides tutorials, quick tips, links to free content downloads, and user profiles that illustrate how people just like you are using Corel digital imaging software to create and share with their photos.

Free Support

Available 24 hours a day, 7 days a week, 365 days a year, the Corel Knowledge Base provides free and unlimited support for all registered users of Corel's retail and licensed software. This searchable Web-based tool provides answers to commonly asked technical questions. Responses are searchable in seven languages, including English, French, German, Italian, Spanish, Portuguese, and Japanese. To search the Corel Knowledge Base, please visit: www.corel.com/knowledgebase.

About Corel

Corel is a leading global packaged software company with an estimated installed base of more than 40 million users. The company provides high-quality, affordable, and easy-to-use productivity, graphics, and digital imaging software and enjoys a favorable market position among value-conscious consumers and small businesses. Corel's product portfolio features well-established, globally recognized brands, including CorelDRAW® Graphics Suite, Corel® WordPerfect® Office, WinZip®, Corel® Paint Shop Pro®, and Corel® Painter™. Headquartered in Ottawa, Canada, Corel Corporation is traded on The NASDAQ Stock Market® under the symbol CREL and on the Toronto Stock Exchange under the symbol CRE. For more information, please visit www.corel.com.



Media Contact North America

Gail Scibelli
PR Manager, Digital Imaging
Corel Corporation
613-728-0826 Ext. 5217
gail.scibelli@corel.com

Media Contact EMEA & APAC

Deborah Thomas
PR Manager, EMEA & APAC
Corel UK Limited
+44 (0) 1628 589850
deborah.thomas@corel.com



Corel Corporation

1600 Carling Ave.
Ottawa, ON
Canada K1Z 8R7

Corel UK Limited

Sapphire Court
Bell Street
Maidenhead
Berkshire SL6 1BU
United Kingdom

Corel Minneapolis

Paint Shop Pro
7905 Fuller Road
Eden Prairie, MN
55344 USA

Printed in Canada