



AfterShot™ Pro

Reviewer's Guide

Corel®
AfterShot™ Pro

Contents

1 Introducing Corel AfterShot Pro	1
2 What's included?	3
3 Key features	5

1



Introducing Corel® AfterShot™ Pro

Corel® AfterShot™ Pro is a photographic-workflow solution that gives photo enthusiasts and professionals a complete selective-editing framework, unparalleled asset management options, the most flexible workflow, and fast RAW processing. The foundation of AfterShot Pro is built on the groundbreaking work of Bibble Labs, who spent a decade perfecting the digital darkroom for Windows®, Mac OS®, and Linux® users.

Every step in the development process was driven directly by feedback from working photographers and passionate photo enthusiasts. From the look and feel of the user interface to the emphasis on processing and workflow speed, AfterShot Pro is designed to quickly deliver professional results.

Complete RAW workflow

Whether viewing, rating, sorting, editing, or exporting images, AfterShot Pro provides workflow options not found anywhere else. Other applications make you import a file before you can even view it, but there's no need with AfterShot Pro. Whether a photo is in an existing catalog, in another folder on your system, or still on a memory card, AfterShot Pro lets you work with it.

Flexible photo management

Most photo-workflow programs only allow you to access a single catalog or database at a time, limiting the total number of images you can manage and edit in any one session. AfterShot Pro

lets you use one catalog, many catalogs, or no asset management at all. With no restrictions or pre-defined process to follow, you can work whatever way suits you best.

Advanced, non-destructive editing

Inspired by the renowned selective-editing features that made Bibble Labs a force in the industry, AfterShot Pro lets you non-destructively apply any adjustment or correction to all or a portion of a photo. And a fully stocked image-editing toolset allows you to do your work in AfterShot Pro without switching over to a deeper editing tool.

Breakthrough performance

AfterShot Pro is nimble enough to run on netbooks, but powerful enough to get the most out of 16-core workstations. It's fully multi-threaded and optimized for multi-core and multi-CPU computers, so you'll notice faster output, conversion, on-screen performance, and image browsing. AfterShot Pro is designed take advantage of every CPU at its disposal.

Customer profiles

Professional photographers: Relying on their digital photography for at least part of their income, professional photographers seek a photo-workflow tool that delivers intuitive, hassle-free image management and fast, high-quality RAW processing. They treat their time as an asset, so they seek a workflow that gives them the freedom to choose whether to catalog their shots or get right to work on photos already on their hard drive or a memory card. What's more, the ability to tailor the workspace to suit their working style is critical so that they can make the most of the time they spend on a computer. They value having the ability to edit non-destructively so that they always have the option of going back to start from scratch on an image, working on multiple versions of the original shot, and processing a selection of photos at once. And because they're as likely to work on multi-core system as a laptop — sometimes both, they need software with lighter processing requirements that can also harness every CPU at its disposal.

Photo enthusiasts: A photo enthusiast is anyone who has embraced photography as a passion. Working with both DSLRs and point-and-shoot cameras, they want to get the most out of their device's capabilities, such as shooting in a RAW format. They take a lot of shots, and they find managing their collection of images a challenge. They seek photo-workflow software that allows them to make quick touchups, adjust RAW images, and integration with their image-editing application when they want to make deeper edits.

2



What's included?

Main application

- Corel® AfterShot™ Pro — Windows®, Macintosh®, and Linux® versions

Documentation

- 128-page printed user guide
- HTML Help

Minimum system requirements

Windows®:

- Microsoft® Windows® 7, Windows Vista® or Windows® XP with the latest service packs installed (32-bit or 64-bit editions)
- Intel® Pentium® 4 or later or AMD Athlon™ 64 or later
- 2 GB RAM
- 250 MB of free hard drive space
- Minimum display resolution: 1024 x 600
- CD-ROM drive

Macintosh®:

- Mac OS® X 10.5, 10.6 or 10.7
- All Intel® Mac® models are supported
- 2 GB RAM
- 250 MB of free hard drive space
- Minimum display resolution: 1024 x 600
- CD-ROM drive

Linux® version:

- Fedora® Core 10 or Ubuntu® 8.04 or later (32-bit or 64-bit distributions)
- Intel® Pentium® 4 or later or AMD Athlon™ 64 or later
- 2 GB RAM
- 250 MB of free hard drive space
- Minimum display resolution: 1024 x 600
- CD-ROM drive
- Dependencies: GLib 2.4, KDE, or Gnome recommended
- Enable desktop compositing recommended
- 64-bit distributions require 32-bit compatibility libraries (ia32-libs)

Supported formats

- RAW file support from most leading camera manufacturers; see www.corel.com for the latest listing: ARW, CR2, CRW, DCR, DNG, MRW, NEF, NRW, ORF, PEF, RAW, RW2, RWL, SR2
- JPEG, TIF

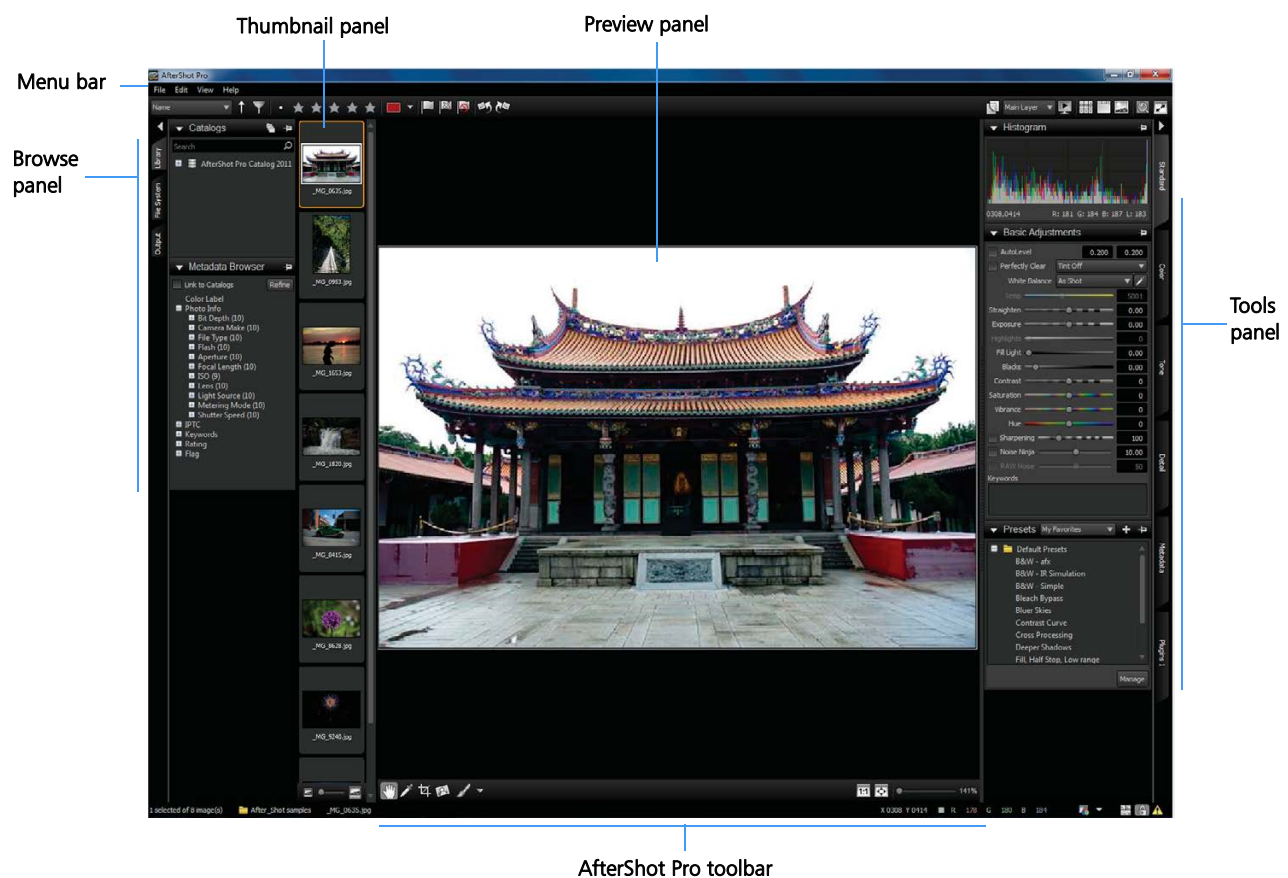
3



Corel® AfterShot™ Pro key features

The development of Corel AfterShot Pro was driven directly by feedback from a wide range of photographers — from professionals to passionate enthusiasts. They helped streamline the design of AfterShot Pro by making it clear what they wanted out of photo-management

software: a complete RAW workflow, flexible photo management, advanced non-destructive selective-editing features, and an application optimized to harness the power of their multi-core systems.



Complete RAW workflow

AfterShot Pro offers flexible workflow options that allow professional and enthusiast photographers to work the way that suits them best.

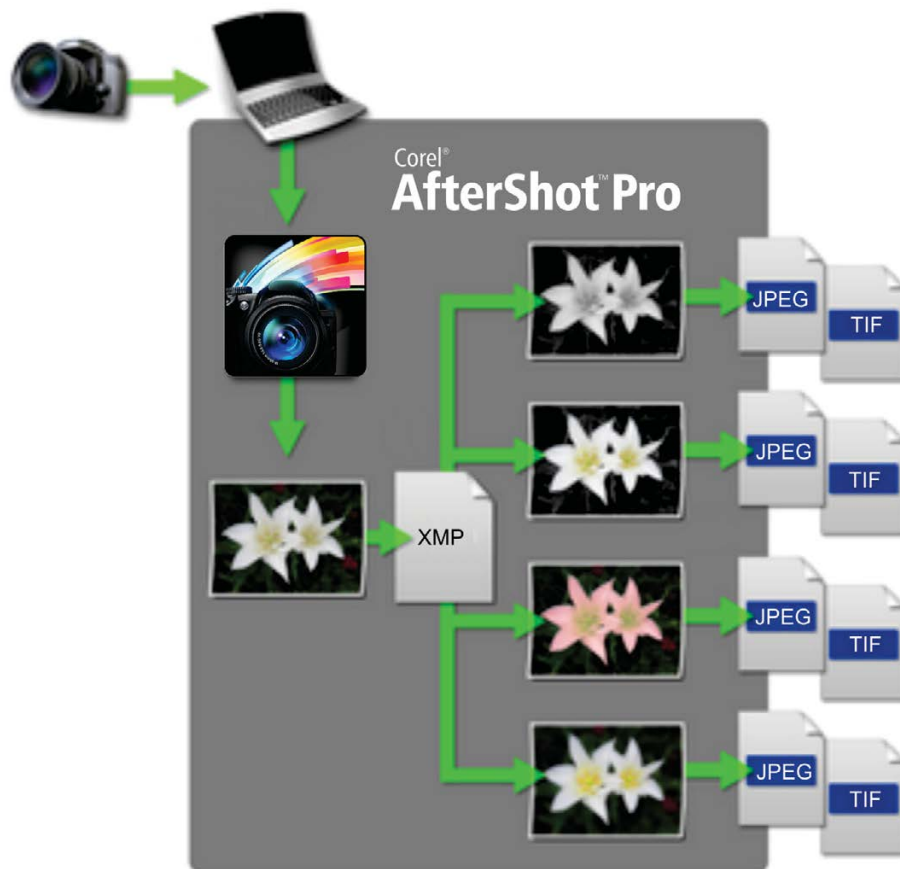
What is photo workflow?

Photo workflow refers to all the activities that occur between the initial image capture and the final photo output. Photographers have very different workflows, depending on the volume of photos they take and what they intend to do with them. Regardless of the complexity of a photo workflow, there are typically three distinct stages:

- The first stage is **asset management**, which can be as simple as reviewing your shots. It

also includes cataloging images as master files and viewing, adding, and searching photo metadata. As a photo library grows, maintaining an organized, searchable library becomes critical. AfterShot Pro provides all the tools needed to catalog your work, and makes it easy to add to your library.

- The next stage is **photo editing**. This is when you'll adjust and correct elements such as exposure, white balance, detail, and distortions. You can also get creative with a variety of non-destructive editing features that you can apply to an entire photo or a selected area.
- The last stage is **output generation**, where photos are exported to a wide range of formats that you can print, email, or share on the Web.



Flexible photo management

Whether you're reviewing, adjusting or exporting images, AfterShot Pro gives you the freedom to work the way you want.

Customizable asset management: What makes the AfterShot Pro asset management system unique is that it's entirely optional. Other photo-workflow tools make you import an image into a catalog even if you just want to see it, making quickly viewing or editing a handful of shots a lot more complicated and time-consuming than it needs to be. But with AfterShot Pro, if you already organize your images into folders on your computer, there's no need to import or worry about cataloging at all. You can work on any image by clicking the File System tab and navigating to the folder you want to work in.

AfterShot Pro has a full suite of photo-management tools that let you quickly organize existing digital images and add additional photos or catalogs at any time.

If you do want to import your work, working with AfterShot Pro Catalogs is fast and easy. There's no restrictive pre-defined process to follow, so you choose how to import, where to store the images, and what Catalog folders you want to create during the import. After you've brought your images into a Catalog, the asset-management features of AfterShot Pro simplify retrieving the shot you're looking for.

Give it a try

To import a folder

- 1 Click the **File System** tab, and navigate to a folder in the Directory View.
- 2 Right-click (Windows) or Command-click (Mac OS) the folder, and choose **Import Folder** from the context menu.

In the Import Photos dialog box, the Source Folder button displays the name of your folder.

You can include subfolders by enabling the **Include images from subfolders** check box.

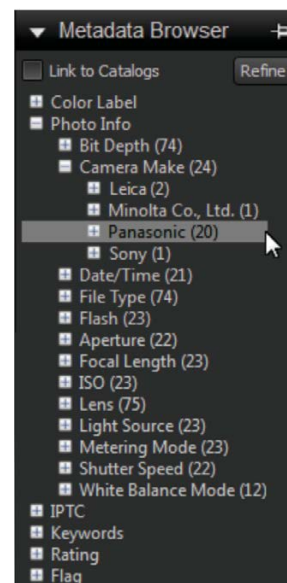
Give it a try

- 3 Enable the **Apply Import Settings** check box, and enter any keywords that you want to apply to all the photos within the folder. You can also apply presets in the same way.

- 4 Click **Begin Import**.

All the photos in the folder are cataloged. To check your catalog, click the **Library** tab, and navigate to your folders in the **Catalogs** panel. The files are not copied when they are cataloged — they are referenced from their original location.

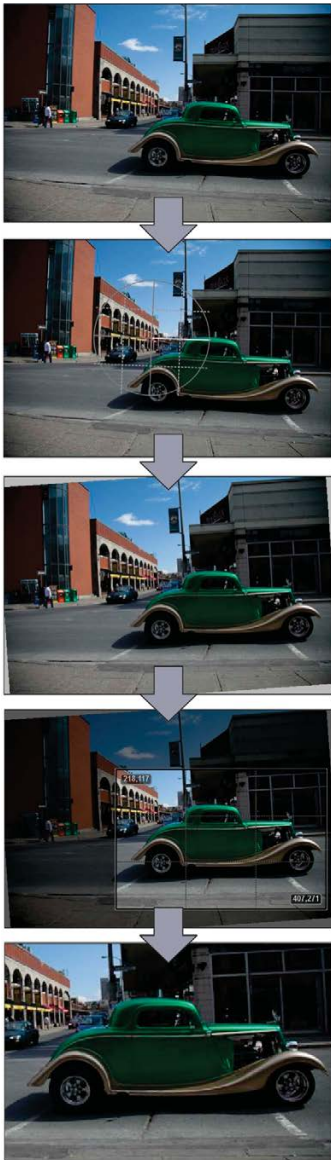
Powerful metadata features: Using metadata to track down a particular shot can save a lot of time and frustration. AfterShot Pro makes it easy to add keywords, ratings, labels, and tags to your photos. You can also use IPTC Metadata, such as captions, copyright, and more. Browsing or searching for images is a breeze because you can use any combination of user-applied or camera-written metadata. Metadata sets can be tailored to display only the information you want, and metadata can be included in AfterShot Pro Presets, making it quick and easy to attach all kinds of information to a photo. Using the Metadata Browser, you can quickly find all images shot on a specific date, with a particular camera, or any combination of the most common shooting information, metadata fields, or keywords.



Advanced, non-destructive editing

With the non-destructive editing tools in AfterShot Pro, you can refine and enhance your photos without ever altering the original file or work on multiple versions of a master image.

Professional editing tools: AfterShot Pro offers more editing tools and features than any other photo-workflow software, so you don't have to switch to another application for advanced editing. A comprehensive toolset lets you correct exposure, lens distortion, white balance, color and tone; sharpen, straighten, and crop photos; reduce noise, and more.



Give it a try

To edit an image

- 1 From the sample files provided to you, select **Example_EditingTools.CR2**, and click **Open**.
- 2 Press the **S** key to activate the Straighten tool on the Corel AfterShot Pro toolbar.
- 3 Drag in the Preview panel to draw a horizontal line to use as a reference for straightening the car in the image.
- 4 Release the mouse button to apply the straightening.
- 5 Press the **C** key to activate the Crop tool on the AfterShot Pro toolbar.
- 6 In the Cropping palette, click the **Enable Crop** check box.
- 7 In the Preview panel, drag the edges of the cropping grid so that the car is centred.
- 8 In the Cropping palette, click **Done**.

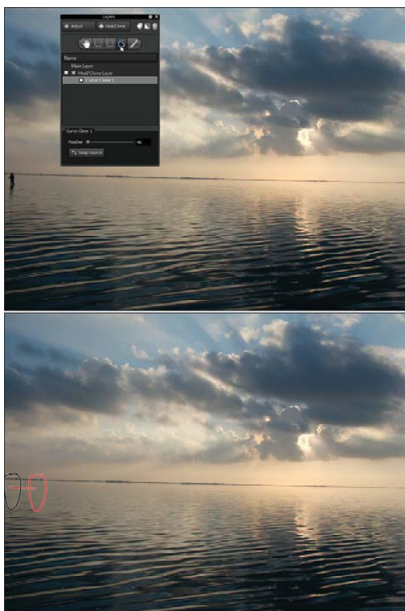
Perfectly Clear®: This award-winning feature from Athentech® Technologies Inc. is a great time-saver, allowing you to apply a powerful set of image optimizations with a single click. Perfectly Clear automatically adjusts lighting for every pixel in a shot while maintaining true color and zero clipping, removes abnormal tint, and restores faded photographs. What's more, Perfectly Clear leverages medical-imaging technology to correct contrast and sharpening.



Noise Ninja™: This state-of-the-art noise reduction system developed by PictureCode, Inc. is built into AfterShot Pro. Noise Ninja technology achieves an unprecedented balance between noise suppression and detail preservation, providing natural-looking results without artifacts.

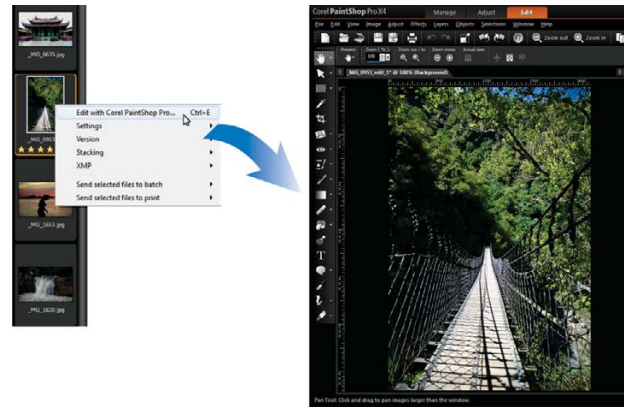


Selective editing freedom: AfterShot Pro gives digital photographers more control over selective and local image adjustments than any other non-destructive editing program. A wide array of editing tools combined with the selective-editing environment provided by Layers and Regions — portions of a photo isolated for editing — allow you to apply essentially any adjustment anywhere. It's as easy as creating a layer, adding a region to the layer, and making the image adjustment. All changes are contained in separate layers preserving the original shot, so you can always modify or remove them if you need to.

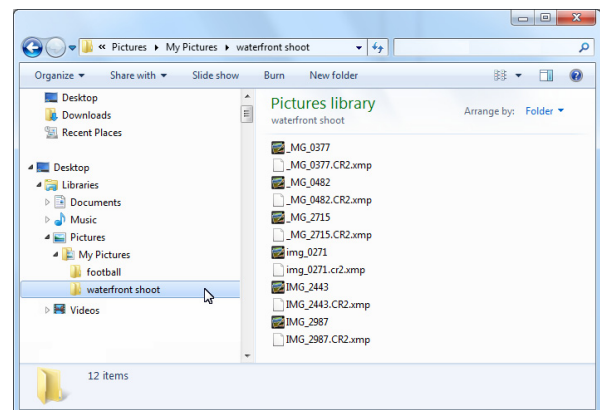


Integration with Corel® PaintShop™ Pro:

When it's time to get more creative with an image, you can send it to Corel® PaintShop™ Pro for deeper editing. PaintShop Pro, a longtime favorite of passionate photo enthusiasts worldwide, is renowned for its hundreds of image-editing features, pro-level effects, streamlined workspace, and one-click sharing. And after you've fine-tuned a shot, it's easily accessible in AfterShot Pro.

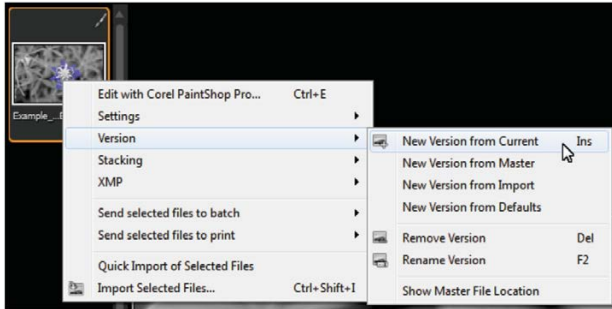


Robust versioning options: Whenever you apply an edit or adjustment to a photo, AfterShot Pro creates a new version of the image, leaving the original master file unchanged. Any changes you make are stored in a sidecar XMP file — a file that is associated with the original, and stored in the same folder.



You can also quickly create a new version of a master without making any changes. All versions maintain their own edit history, and each can be assigned unique metadata.

Versions created from the same master are organized in a stack — a group of images that are similar in content. Stacks can be “rolled up” to show a single image representing the whole group, or “expanded” to show all the images in the stack.



Give it a try

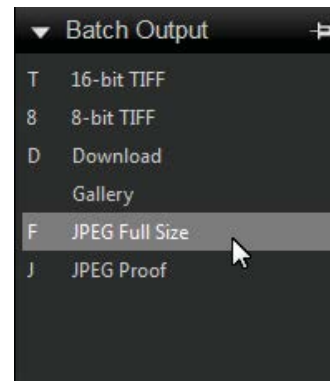
To create multiple versions of a master image

- 1** From the sample files provided to you, select **Example_VersionEdit.CR2**, and click **Open**.
- 2** In the Thumbnail panel, right-click the **Example_VersionEdit.CR2** thumbnail, and choose **Version** ▶ **New Version from Master**.
A version of the image with the current settings is added to the Thumbnail panel.
- 3** Click the **Plugins 1** tab on the Tools panel, and click the **Black and White Plugin** section.
- 4** Enable the **Enable Black and White** check box.
- 5** On the First Spot Color tab, enable the **Enable** check box, and drag the **Hue** slider until some color reappears in the image.
- 6** In the Thumbnail panel, select both versions of **Example_VersionEdit.CR2**.
- 7** Right-click, and choose **Stacking** ▶ **Stack**.

Unique plug-in SDK: AfterShot Pro is the only photo-workflow software to offer a plug-in SDK that allows 3rd-party developers to create image-editing plug-ins that work directly on RAW files. AfterShot Pro includes an innovative Black & White plug-in that converts a photo to black and white and lets you restore one or two colors back into the image. And AfterShot Pro plug-ins work seamlessly with undo/redo commands and

editing-history tools, and never require the creation of intermediate image files.

Flexible output options: AfterShot Pro saves you time with some of the most advanced and flexible batch-processing tools available. You can rename multiple images, apply the same adjustment settings to groups of similar files, or convert and export photos to a pre-defined size and format.



Give it a try

To output to a full-sized JPEG

- 1** In the Thumbnail panel, select one or more photos that you want to output.
- 2** Do one of the following:
 - In the Browse panel, click the **Output** tab, and in the Batch Output section, drag the thumbnails to **JPEG Full Size**.
 - Press the **F** key.
- 3** In the Select a Destination dialog box, choose a folder where the files will be saved.

After you select a destination folder, files are saved automatically to that folder for the rest of the session or until you change the destination. You can change the destination and access other output settings by double-clicking a batch name in the Batch Output section.

Breakthrough performance

Drawing on the groundbreaking RAW file decoding and conversion of Bibble Labs, AfterShot Pro combines fast RAW processing and optimization for multi-core computers to maximize the speed of on-screen preview, adjustment and output generation.

Lightning-fast RAW processing: AfterShot Pro is designed to help you make the most of the extra detail and data in your RAW images by offering very fast RAW processing and incredibly color-accurate images. And AfterShot Pro also works quickly and efficiently with JPEG and TIFF files, giving you a unified photographic workflow. Take a look at the following table to see how AfterShot Pro takes full advantage of every CPU at its disposal when processing RAW images:

Number of CPUs	Seconds per image
1	1.77
2	.895
4	.457
6	.311
8	.239
10	.195
12	.165
14	.143
16	.128

Test file: 8.2 megapixel CR2; Camera: Canon 1D Mark II; System: Colfax; OS: Windows® Server 2008 R2; CPU: AMD Opteron™ 8389; # CPUs/cores: 4/16; Clock speed: 2.9 GHz; RAM: 16 GB; Tested on 1 through 16 cores

Prioritized editing: Thanks to the Smart Priority system, your most important tasks are performed first, so AfterShot Pro flies when you're simultaneously viewing, managing, and editing files. Whether you're panning and zooming on several full-size RAW files or applying image adjustments, there's almost no lag time.

Camera support: AfterShot Pro can process RAW files from all major camera manufacturers:

Canon®	EOS: D30, D60, 10D, 20D, 30D, 40D, 50D, 60D, 5D, 5D Mark II, 7D, 1D, 1D Mark II, 1D Mark IIIn, 1D Mark III, 1D Mark IV, 1Ds, 1Ds Mark II, 1Ds Mark III, 300D, 350D, 400D, 450D, 500D, 550D, 600D, 1000D, 1100D Powershot: G2, G3, G5, G6, G9, G10, G11, G12, S40, S45, S50, S60, S70, S90, S95, Pro1, SX1 Canon sRAW and mRAW formats
Nikon®	D40, D40x, D50, D60, D70, D70s, D80, D90, D100, D200, D300, D300s, D700, D3s, D3x, D3, D2x, D2h, D2xs, D2hs, D1, D1h, D1x, P6000, D3000, D5000, D3100, D5100, D7000, Nikon 1 J1, Nikon 1 V1, P7000
Olympus®	E-1, E-3, E-5, E-10, E-20, E-30, E-300, E-400, E-410, E-420, E-450, E-500, E-510, E-520, E-600, E-620, E-P1, E-P2, E-P3, E-PL1, E-PL1s, E-PL2, E-PL3, E-PM1 C5050z, C5060wz, C7070wz, C8080wz, SP-310, SP-320, SP-350, SP-500uz, SP-510uz, SP-550uz, XZ-1
Pentax®	K20D, K200D, K100D Super, K10D, K100D, K110D, *ist DS2, *ist D, *ist DS, *ist DL, *IST DL2, K2000, K-m, K-7, K-x, K-5, K-r
Samsung®	GX-1L, GX-1S, GX-10, GX-20
Sony®	NEX-3, NEX-5, NEX-5N, a33, a55, a55V, A-65, A-77, a100, a200, a230, a290, a300, a330, a380, a390, a350, a450, a500, a550, a560, a580, a700, a850, a900, DSC-R1
Panasonic®	L1, L10, LX1, LX2, LX3, LX5, FZ8, FZ18, FZ28, FZ30, FZ35, FZ38, FZ40, FZ45, FZ50, FZ100, G1, G3, GH1, GF1, G2, G10, GH2, GF2
Leica®	DIGILUX 3, V-LUX 1, V-LUX 2, D-LUX 2, D-LUX 3, D-LUX 4, D-LUX 5, M8, M9, X1, Digital MODUL-R8, Digital MODUL-R9
Minolta®	DiIMAGE A1, DiIMAGE A2, DiIMAGE 7, DiIMAGE 7i, DiIMAGE 7Hi, MAXXUM 5D, MAXXUM 7D, DYNAX 5D, DYNAX 7D, DiIMAGE A200, ALPHA-5 DIGITAL, ALPHA SWEET DIGITAL, Alpha-7 Digital
Kodak®	DCS Pro 14n, DCS Pro 14nx, DCS Pro SLR/c, DCS Pro SLR/n
Ricoh®	GX-100, GX-200, GR Digital II, GR Digital III, GXR, GXR P10

About Corel Corporation

Corel is one of the world's top software companies, with more than 100 million active users in over 75 countries. We develop software that helps people express their ideas and share their stories in more exciting, creative, and persuasive ways. Through the years, we've built a reputation for delivering innovative, trusted products that are easy to learn and use, helping people achieve new levels of productivity. The industry has responded with hundreds of awards for software innovation, design, and value.

Our award-winning product portfolio includes some of the world's most widely recognized and popular software brands, including CorelDRAW® Graphics Suite, Corel® Painter™, Corel DESIGNER® Technical Suite, Corel® PaintShop™ Pro, Corel® AfterShot™ Pro, Corel® VideoStudio® Pro, Corel® WinDVD®, Corel® WordPerfect® Office, WinZip®, and Corel® Digital Studio™. Our global headquarters are in Ottawa, Canada, and major offices are in the United States, the United Kingdom, Germany, China, Taiwan, and Japan.

Copyright 2012 Corel Corporation. All rights reserved.

Corel® AfterShot™ Pro Reviewer's Guide

Product specifications, pricing, packaging, technical support and information ("specifications") refer to the retail English version only. The specifications for all other versions (including other language versions) may vary.

INFORMATION IS PROVIDED BY COREL ON AN "AS IS" BASIS, WITHOUT ANY OTHER WARRANTIES OR CONDITIONS, EXPRESS OR IMPLIED, INCLUDING, BUT NOT LIMITED TO, WARRANTIES OF MERCHANTABILITY, SATISFACTORY QUALITY, MERCHANTABILITY OR FITNESS FOR A PARTICULAR PURPOSE, OR THOSE ARISING BY LAW, STATUTE, USAGE OF TRADE, COURSE OF DEALING OR OTHERWISE. THE ENTIRE RISK AS TO THE RESULTS OF THE INFORMATION PROVIDED OR ITS USE IS ASSUMED BY YOU. COREL SHALL HAVE NO LIABILITY TO YOU OR ANY OTHER PERSON OR ENTITY FOR ANY INDIRECT, INCIDENTAL, SPECIAL, OR CONSEQUENTIAL DAMAGES WHATSOEVER, INCLUDING, BUT NOT LIMITED TO, LOSS OF REVENUE OR PROFIT, LOST OR DAMAGED DATA OR OTHER COMMERCIAL OR ECONOMIC LOSS, EVEN IF COREL HAS BEEN ADVISED OF THE POSSIBILITY OF SUCH DAMAGES, OR THEY ARE FORESEEABLE. COREL IS ALSO NOT LIABLE FOR ANY CLAIMS MADE BY ANY THIRD PARTY. COREL'S MAXIMUM AGGREGATE LIABILITY TO YOU SHALL NOT EXCEED THE COSTS PAID BY YOU TO PURCHASE THE MATERIALS. SOME STATES/COUNTRIES DO NOT ALLOW EXCLUSIONS OR LIMITATIONS OF LIABILITY FOR CONSEQUENTIAL OR INCIDENTAL DAMAGES, SO THE ABOVE LIMITATIONS MAY NOT APPLY TO YOU.

AfterShot, Corel, the Corel balloon logo, the Corel logo, CorelDRAW, Corel DESIGNER, Digital Studio, Painter, PaintShop, Quattro Pro, VideoStudio, WinDVD, WinZip, and WordPerfect are trademarks or registered trademarks of Corel Corporation and/or its subsidiaries in Canada, the United States and/or other countries.

Protected by Patents in the United States and elsewhere.

All trademarks or registered trademarks are the property of their respective owners.

AfterShot™ Pro

Media Contact North America

Sara Chesiuk
Public Relations Specialist
Corel Corporation
613-728-0826 ext. 1259
sara.chesiuk@corel.com



Corel Corporation
1600 Carling Ave.
Ottawa, ON
Canada K1Z 8R7

Corel UK Limited
Sapphire Court
Bell Street
Maidenhead
Berkshire SL6 1BU
United Kingdom

Corel TW Corp.
7F No. 399, Rueiguang Rd,
Neihu District, Taipei City
114, Taiwan