

Invest time and money back into your business

# WordPerfect® Office 12 Small Business Edition



Microsoft® Office Compatible™

WordPerfect® Office 12 – Small Business Edition has everything you need to run a small business. Create professional-looking documents and presentations. Get versatile spreadsheets with Quattro Pro® 12. Protect information using antivirus and firewall software. Communicate effectively with co-workers, clients and partners using WordPerfect® Mail. Save time with WordPerfect® OfficeReady® solution packs. Paint Shop™ Pro® 9 allows creativity with professional photo editing.

Compatible with Microsoft® Office and other popular file formats, WordPerfect Office 12 – Small Business Edition features a familiar look and feel. Invest time and money back in your business: this feature-packed suite translates into great value!

1

## Everything you need to run a Small Business

Compatible with Microsoft® Office and other popular file formats, WordPerfect Office 12 – Small Business Edition features a familiar look and feel, minimizing employee training. Versatile and easy to use, this feature-packed suite translates into great value.

**WordPerfect Office 12 – Small Business Edition, includes:**

- **WordPerfect 12**  
Legendary, powerful word processing used by millions of customers!
- **Quattro Pro® 12**  
Easily transform data into useful spreadsheets
- **Presentations™ 12**  
Make stunningly effective presentations to your clients and partners
- **Paint Shop™ Pro® 9**  
Enhance digital images and market your business
- **WordPerfect® Mail**  
Collaborate with clients, co-workers and partners
- **WordPerfect® OfficeReady® – Business Essentials**  
Save time and get professional results with fantastic templates
- **WordPerfect OfficeReady - Business Plans and Proposals**  
Organize your strategic direction efficiently
- **Norton® Internet Security 2005\***  
Protect your business information against viruses, spam and privacy threats
- **Task Manager**  
Improve productivity with a few easy clicks

\*This special edition of Norton Internet Security 2005 includes Norton AntiVirus, Norton Personal Firewall, Norton AntiSpam, Norton Privacy Control and a complementary 90-day subscription to protection updates.

2

## Create professional-looking documents

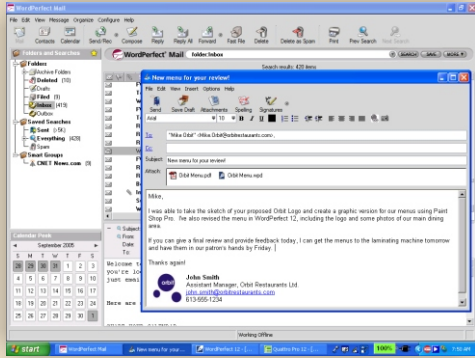
- Develop effective marketing collateral, stationery and reports using WordPerfect 12 and WordPerfect OfficeReady templates
- Create stunning multimedia presentations with fantastic effects
- Enhance your documents, marketing collateral and presentations with digital pictures edited easily in Corel Paint Shop Pro 9



Create professional documents and presentations with WordPerfect Office 12 – Small Business Edition!

## Communicate effectively with co-workers, clients and partners

- Open, edit and save Microsoft Office files, including Microsoft Office 2003
- Easily search, share and sort emails, calendars and contacts with WordPerfect Mail
- Using the Compatibility Toolbar, save your documents to Microsoft Office, PDF, XML or HTML with an easy click!



*WordPerfect Mail – collaborate with clients, partners, and co-workers*

## Minimum System Requirements

- Windows Server 2003, Windows® XP (with SP2 Home or Professional Edition), Windows 2000 (with SP4), or Windows 98 SE
- 128 MB RAM (512 MB recommended)
- 300 MHz Pentium II or equivalent processor (1.0 Ghz Pentium® III or equivalent processor recommended)
- 1.2 GB hard disk space (to install all applications)
- Super VGA, 16-bit color monitor supporting 800x600 or higher resolution
- CD-ROM drive
- Mouse or tablet

**Miscellaneous:** Microsoft Internet Explorer 6.0 (or higher) is required for some functionality.

For more information on WordPerfect Office 12 – Small Business Edition please call 1-877-682-6735 or visit [www.wordperfect.com](http://www.wordperfect.com)

\*This special edition of Norton Internet Security 2005 includes Norton AntiVirus, Norton Personal Firewall, Norton AntiSpam, Norton Privacy Control and a complementary 90-day subscription to protection updates.



**Corel Corporation**  
1600 Carling Ave.  
Ottawa, ON  
Canada K1Z 8R7

**Corel UK Limited**  
Sapphire Court  
Bell Street  
Maidenhead  
Berkshire SL6 1BU  
United Kingdom

© 2005 Corel Corporation. All rights reserved. Printed in Canada

WordPerfect Office 12 will open the vast majority of files created in Microsoft Word, Microsoft Excel and Microsoft PowerPoint. Due to differences in the applications, on occasion a file may not open and, in some cases, formatting may not be identical. Whenever possible, Corel has made attempts to correctly convert files. Corel cannot guarantee full compatibility with future versions of Microsoft Office. WordPerfect Office 12 has been designed to open and save files up to Microsoft Office 2003. WordPerfect Office 12 is a product of Corel Corporation and is not manufactured, distributed or endorsed by Microsoft Corporation.

Corel, OfficeReady, Paint Shop Pro, Quattro Pro and WordPerfect, are trademarks or registered trademarks of Corel Corporation and/or its subsidiaries in Canada, the United States and/or other countries. All other trademarks are the property of their respective owners.

## Protect your business

- Minimize down-times by keeping your computers safe from viruses, hackers and spam with Norton Internet Security 2005.
- Includes Norton AntiVirus, Norton Personal Firewall and Norton AntiSpam plus a complementary 90-day subscription to Protection Updates.

## Invest time and money back into your business

- An office suite specifically designed with your small business in mind - save money by buying the suite instead of these applications separately
- Minimize training costs with the Workspace Manager. With a few easy clicks, WordPerfect Office 12 – Small Business Edition can resemble the office suite which your employees are most familiar with, whether it's WordPerfect Office, Microsoft Office or even the classic WordPerfect 5.1
- Launch applications, recent documents, special templates and help resources with a click using the Task Manager



**5-License Packs also available**

## Upgrade Eligibility

To purchase the upgrade version of WordPerfect Office 12 – Small Business Edition, you must own a previous licensed version of Corel® WordPerfect® 8, Corel WordPerfect Suite 8, WordPerfect Office 2000, WordPerfect Office 2002, WordPerfect Office 11, WordPerfect Family Pack 1 – 5, WordPerfect Office 12 – Home Edition, Paradox® 8 – 10, CorelDRAW® 11, CorelDRAW Graphics Suite 11 – 12, Corel® Painter™ 8, Microsoft® Office 97 or higher, Microsoft® Works 7, or Microsoft Works Suite 2000 or higher.