

WordPerfect® OFFICE 12

For the Consumer

Microsoft®
Office
Compatible*



WordPerfect®



Quattro Pro®



Presentations™

Versatile and easy to use, WordPerfect® Office 12 is a feature-rich office productivity suite ideally suited for home business, education, and small business users. With advanced word processing, spreadsheet, presentation and address book applications, this suite offers everything you need in one affordable package. Compatible with popular file formats such as Microsoft® Office, PDF, HTML and XML, WordPerfect Office 12 it simplifies file exchange and streamlines workflow. Great software at a competitive price makes WordPerfect Office 12 a winning choice for consumers.

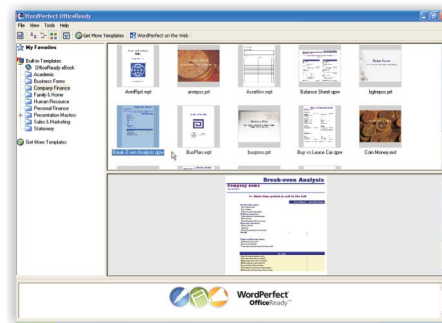
FEATURE RICH

- **Boost your productivity** – Harness the trusted power of WordPerfect® 12 for word processing, Quattro Pro® 12 for spreadsheets, and Presentations™ 12 for multimedia slide shows. The suite also includes an address book for managing contact information.
- **New! Workspace Manager** – Quickly become familiar with WordPerfect Office 12 no matter what productivity package you've used before. Quickly adjust the user interface—including toolbars, menu items and shortcut keys—to suit your needs. Choose from classic WordPerfect® 5.1 and familiar Microsoft® Office-style interfaces and more.

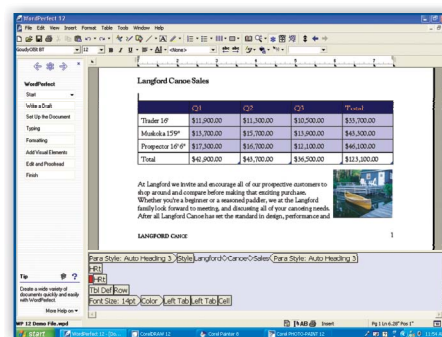


- **Microsoft® Outlook® integration** – Access your Outlook address book from within WordPerfect 12 to create envelopes and labels, and routing slips for document tracking.
- **New! WordPerfect® Wireless Office Suite, Powered by ZIM** – Get mobile today! Two-way SMS text messaging and mobile phones keep you connected with your office—anytime, anywhere. Send e-mail and instant messages easily no matter where you are.

- **New! WordPerfect® OfficeReady™** – Organize, preview and access all your WordPerfect Office 12 templates in one easy-to-use browser. The suite also includes links to 40 new templates and gives access to many more via the Internet. **



- **Powerful graphics tools** – Enhance word-processing documents, spreadsheets and presentations with 3D charts, tables and clipart images, and even with your own designs.
- **PerfectExpert™** – Let this versatile Online Help utility guide you through everyday tasks and detailed projects. Learn how to write documents for work, school or personal use. Plus, get tips on writing and giving speeches, and on how to make presentations and documents look professional.



Reveal Codes – Easily format long or complex documents by viewing and editing formatting codes.

WordPerfect® OFFICE 12

Microsoft®
Office
Compatible*



WordPerfect®



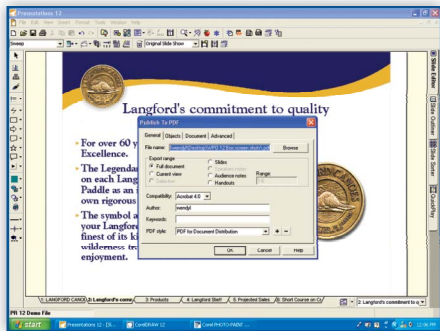
Quattro Pro®



Presentations™

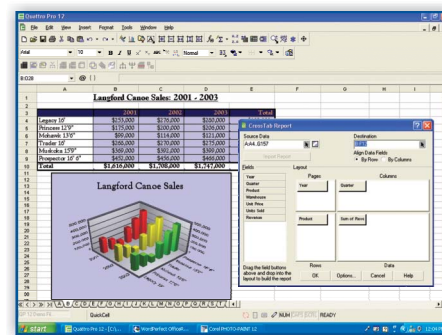
COMPATIBLE

- **Enhanced! Compatibility with Microsoft® Office** – Share information and collaborate with colleagues and clients who use Microsoft® Word, Microsoft® Excel and Microsoft® PowerPoint®.
- **New! Compatibility toolbars** – Quickly publish documents to PDF, HTML, XML, Microsoft Word, Microsoft Excel and Microsoft PowerPoint formats with the click of a button.
- **Publish to PDF** – Generate PDF documents quickly from WordPerfect 12 and Presentations 12 without having to purchase Adobe® Acrobat® or other PDF-generating tools.



VALUE PRICED

- **Competitive retail pricing** – WordPerfect Office 12 is a full-featured, easy-to-use office productivity suite that's available at a lower cost than Microsoft Office.
- **Flexible upgrade eligibility** – Upgrade from previous versions of WordPerfect Office and Microsoft Office, or from other Corel products.



Powerful CrossTab Reports (similar to Microsoft® Excel PivotTables) – Summarize large amounts of data from spreadsheets created in Quattro Pro® 12 and external databases.

Minimum System Requirements

- Windows® Server 2003, Windows XP (with SP1 Home or Professional Edition), Windows NT® 4.0 (with SP6a), Windows 2000 (with SP4) or Windows 98 SE
- 64 MB RAM (128 MB recommended)
- 166 MHz (Pentium® III or equivalent processor recommended)
- 195 MB hard disk space for minimum installation (maximum 399 MB)
- 197 MB additional hard disk space for Paradox® (Paradox included in Professional and Education Editions only)
- CD-ROM drive
- Mouse or tablet

Also includes

- Multilingual writing tools for many languages, including French, German, Spanish, Dutch and Italian
- The Pocket Oxford™ English Dictionary
- WordPerfect® OfficeReady™
- Microsoft® Internet Explorer 6.0
- Microsoft® Visual Basic® for Applications 6.3
- Adobe® Acrobat® Reader® 6.0
- Address Book
- 40 new templates!
- 9,500 clipart images
- 600 TrueType® fonts
- 180+ photos

www.corel.com

Corel Corporation
1600 Carling Ave.
Ottawa, ON
Canada K1Z 8R7

Corel UK Limited
Sapphire Court
Bell Street
Maidenhead
Berkshire SL6 1BU
United Kingdom

Find out more about WordPerfect Office 12 at
www.wordperfect.com

Created in CorelDRAW Graphics Suite 12

*WordPerfect Office 12 will open the vast majority of files created in Microsoft Word, Excel and PowerPoint. Due to differences in the applications, on occasion a file may not open and in some cases formatting may not be identical. Whenever possible, Corel has made attempts to correctly convert files. Corel cannot guarantee full compatibility with future versions of Microsoft Office. WordPerfect Office 12 has been designed to open and save files up to Microsoft Office 2003. WordPerfect Office 12 is a product of Corel Corporation and is not manufactured, distributed or endorsed by Microsoft Corporation.

**Charges may apply for some templates.
© 2004 Corel Corporation. All rights reserved.
Printed in Canada 04/03

COREL™