



WordPerfect[®] MAIL

Change your outlook on email



GET IT NOW! WordPerfect[®] MAIL[™] is perfect for the office or home—wherever you depend on email to communicate, stay informed, and manage your time effectively. It's designed to help you enjoy the benefits that email offers, while reducing the challenges that stand in the way of effective communication.

With **lightning-fast search** capabilities, you can find information anywhere, including folders, the calendar and contact lists, even in attachments! WordPerfect MAIL also helps keep your email clean and organized with innovative filing capabilities and spam protection.

Easy to use and **full-featured**, WordPerfect MAIL lets you bring in emails, folders and contacts from other email programs, like Microsoft[®] Outlook[®]. Now you can start enjoying the advantages of email communication – faster and easier than ever before.



GREAT FEATURES:



Find the information you need—at rapid speeds!

- Search large Inboxes and folders and find the information you're looking for—at speeds many times that of competing products!
- Search calendars, contact lists ... even attachments!



Easy to use!

- Easily bring in your emails, folders and contacts from programs, like Microsoft Outlook, with a few easy clicks
- Easy to learn, use and tailor to your needs!



Keep your Inbox clean and organized!

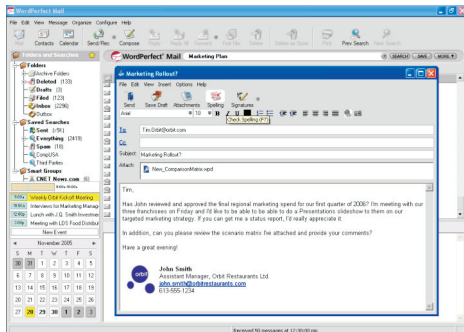
- Quickly and easily file the emails you want to keep
- Automatically manage mailing lists and RSS feeds with a few clicks
- Eliminate unwanted spam
- Avoid viruses targeted at Microsoft Outlook



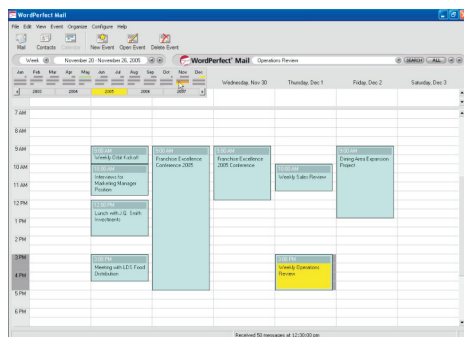
Full-featured!

- Includes:
- Email
 - Calendars
 - Contact Management
 - Spam Protection

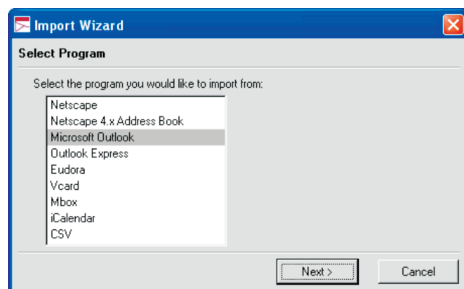
Simple to use! WordPerfect MAIL is easy to customize for your needs.



Get organized! Innovative features such as Calendar Peek and Date Picker help manage your time.



Make an easy transition! Gathering messages, folders and contacts from other email programs is a snap!



Minimum System Requirements

- Windows® XP Home or Professional Edition, Windows® 2000 or Windows® 98 SE
- Pentium III 500 Mhz processor
- 256 MB RAM
- 110 MB of available hard disk space
- CD-ROM drive
- Mouse or Tablet
- Internet Connection
- Miscellaneous: Internet Explorer® 5.5 (or higher) is required to install.

WordPerfect® MAIL™ comes FREE in WordPerfect® Office 12 - Small Business Edition

Invest time and money back into your business with WordPerfect Office 12 -- Small Business Edition, small business software that's compatible with growth.



WordPerfect® Office 12 – Small Business Edition includes:

- **WordPerfect® 12** - Powerful word processing used by millions of people
- **Quattro Pro® 12** - Easily transform data into useful spreadsheets to help you make important business decisions
- **WordPerfect® MAIL™** - Collaborate with clients, coworkers and partners with this powerful new email program!
- **Presentations™ 12** - Make stunningly effective presentations to your clients and partners
- **Paint Shop™ Pro® 9** - Enhance digital images and market your business
- **WordPerfect® OfficeReady® – Business Essentials** - Save time and get professional results with fantastic templates
- **WordPerfect® OfficeReady® - Business Plans** - Organize your strategic direction efficiently
- **Norton® Internet Security 2005*** - Protect your business and keep your productivity high with award-winning security software
- **Task Manager** - Start projects, launch applications and improve productivity with a few easy clicks

Find out more about WordPerfect Office 12 – Small Business Edition at www.wordperfect.com

*Includes a complimentary 90-day subscription to protection updates!

www.corel.com

Corel Corporation
1600 Carling Ave.
Ottawa, ON
Canada K1Z 8R7

Corel UK Limited
Sapphire Court
Bell Street
Maidenhead
Berkshire SL6 1BU
United Kingdom

Find out more about WordPerfect MAIL at
www.wordperfect.com/mail

Created in CorelDRAW Graphics Suite 12

© 2005 Yahoo! Inc. and Corel Corporation. All rights reserved. Corel, the Corel logo, WordPerfect, WordPerfect MAIL, Presentations, Quattro Pro, Paint Shop Pro, WordPerfect OfficeReady are trademarks of Corel Corporation and/or its subsidiaries in Canada, the U.S. and/or other countries. Windows and the Windows XP logo are either trademarks or registered trademarks of Microsoft Corporation in the U.S. and/or other countries. Pentium is a trademark or a registered trademark of Intel Corporation or its subsidiaries in the U.S. and other countries. Other product, font and company names and logos may be trademarks or registered trademarks of their respective companies. This product is provided under an enclosed license agreement that defines what you may do with this product and contains limitations on warranties and your remedies.

© 2005 Corel Corporation. All rights reserved.
Printed in Canada 06/05 JB384