



Giving an Extreme Makeover

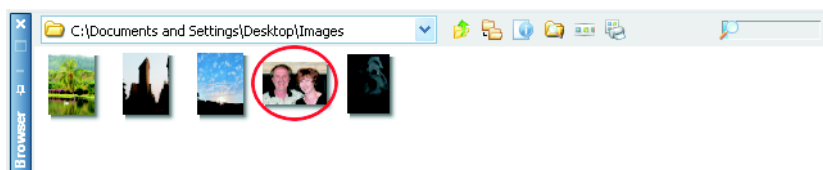
With Paint Shop Pro X's amazing set of Makeover Tools, you'll be able to remove blemishes, whiten teeth, and brush on a tan within seconds. Retouching portions your photos has never been easier!

In this tutorial, you'll become familiar with

- Using the Learning Center to open a photo
- Using the three modes of the Makeover tool to retouch portions of a photo

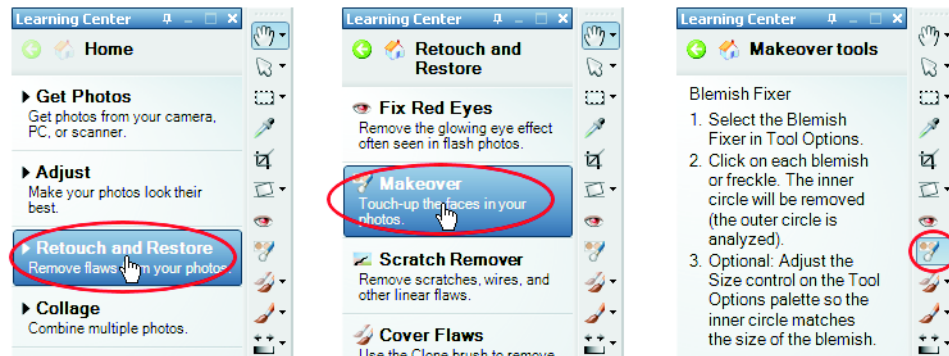
Open the photo

- 1 From the Learning Center's **Home** page, choose **Get Photos**, and then choose **Browse**.
- 2 From the Browser palette, navigate to where you've saved the "Makeover_before.jpg" photo.
- 3 Double click the photo's Browser palette thumbnail to open the photo in the Paint Shop Pro X workspace.



Choose the Makeover tool

- 4 From the Learning Center's **Home** page, choose **Retouch and Restore**, and then choose **Makeover**. The Makeover tool will become active.



Remove a blemish

- 5 In the Tool Options palette, choose the **Blemish Fixer** mode.



- 6 If necessary, zoom in the "Makeover_before.jpg" photo so you can clearly see the blemish above the right side of the woman's mouth. Place the tool cursor directly over the blemish so that the cursor's inner circle encloses it, and then click.
 - If the blemish is still visible, click over it again, or increase the **Strength** setting and then click.
 - To increase the cursor size, adjust the **Size** setting in the Tool Options palette, or hold down the **Alt** key and drag the mouse.



Whiten teeth

- 7 Now let's use the second mode of the Makeover tool – the **Toothbrush**. Choose this mode from the Tool Options palette.

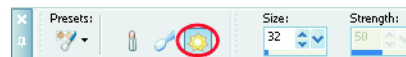


- 8 If necessary, zoom and pan the photo so you can see either person's teeth. Place the Toothbrush mode cursor directly over a tooth, and then click once. There's no need to actually brush – the toothbrush will apply the whiteness across an entire smile in one click!



Brush on a suntan

- 9 Making someone look like she's spent a few days on a sunny beach has never been easier. From the Tool Options palette, choose the Makeover tool's **Suntan** mode.



- 10 Pan and zoom as necessary to view the woman in the photo. Place the Suntan mode cursor over her skin and brush on a tan.
 - To increase the cursor size, adjust the **Size** setting in the Tool Options palette, or hold down the **Alt** key and drag the mouse.

