

Fix Photos the Smart Way

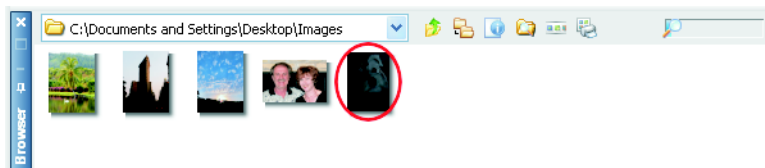
The Smart Photo Fix command is the best way to correct color, exposure, and lighting problems. You'll see how, with only one click, your photo is analyzed and corrections are suggested — you're then free to adjust the corrections to suit your tastes.

In this tutorial, you'll become familiar with

- Using the Learning Center palette to open a photo and display the Smart Photo Fix dialog
- Using the Smart Photo Fix dialog to adjust a photo

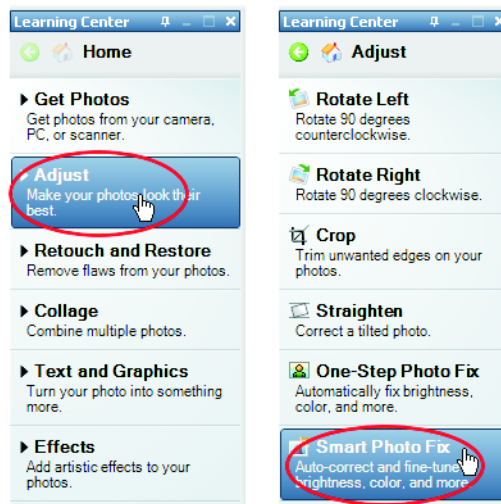
Open the photo

- 1 From the Learning Center's **Home** page, choose **Get Photos**, and then choose **Browse**.
- 2 From the Browser palette, navigate to where you've saved the “SPF_before.jpg” photo.
- 3 Double click the photo's Browser palette thumbnail to open the photo in the Paint Shop Pro X workspace.

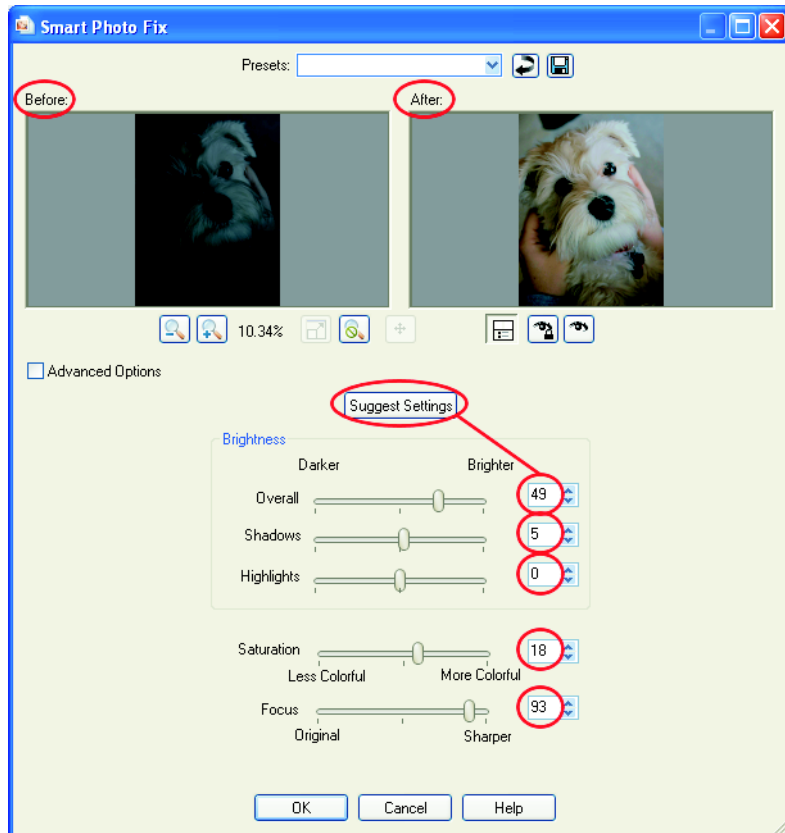


Apply Smart Photo Fix adjustments

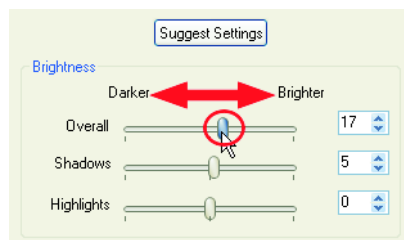
- 4 From the Learning Center's **Home** page, choose **Adjust**, and then choose **Smart Photo Fix**. The Smart Photo Fix dialog will appear.



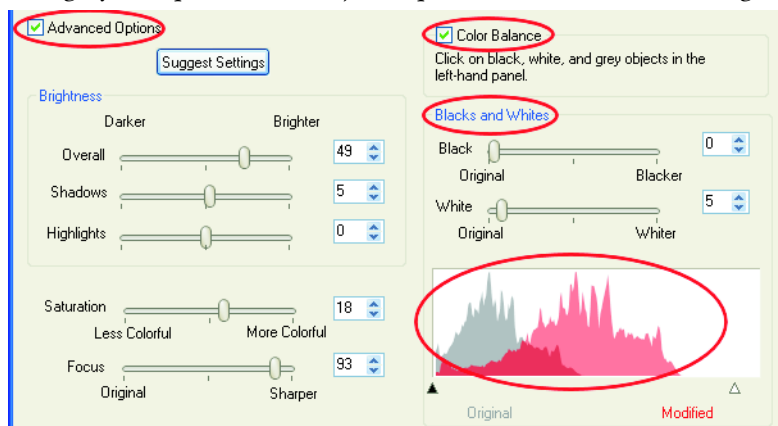
- 5 Toward the top of the dialog, you'll see the original photo (Before) and the photo with the suggested command settings applied (After). The Smart Photo Fix command instantly analyzes your photo and applies a set of suggested adjustments.



- 6 You can make your own adjustments. For example, place the cursor over the Overall brightness slider, and drag the slider left and right. When you move the slider and release the mouse button, the After preview will be updated with the new Overall brightness setting.



- 7 More settings are available by clicking the dialog's **Advanced Options** check box.
- The **Color Balance** option allows you to place additional grey balancing points on the original preview (Before). These points can help the Smart Photo Fix command determine the optimum adjustments needed to make the photo look its best.
 - The **Blacks and Whites** sliders allow you to further adjust the darker and lighter areas of the photo. Advanced users will appreciate the histogram display seen in the bottom right corner — it shows the tonal distribution of the original photo (grey) compared to the adjusted photo with the current settings.



- 8 If you've made your own adjustments but would like to go back to the initial adjustments determined by the command, just click the **Suggest Settings** button. When you're ready to apply the adjustments to the photo, click **OK**.

