

Photo Fixing Basics

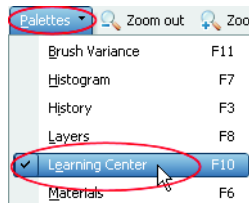
If you're a new user to Paint Shop Pro, or someone who has used it before but is looking for the fastest way to get work done with version X, the Learning Center palette is first feature you should get to know. This palette is designed to help all levels of users become comfortable and productive with Paint Shop Pro X. Consisting of step-by-step guides covering a wide range of common tasks as well as the program's tools and many of its commands, the Learning Center gives you quick access to all your favorite tools!

In this tutorial, you'll become familiar with

- The Learning Center palette, and how to use it to open a photo
- Using the palette to access the Crop tool and the One Step Photo Fix command

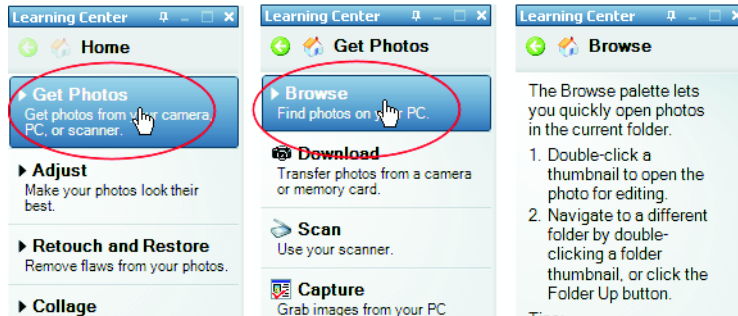
Open a photo with the Learning Center palette

- 1 Locate the Learning Center palette. When you start up Paint Shop Pro X for the first time, the palette will be docked along the left side of the application window. However, if the palette is not currently displayed, you can display it by choosing **View ▶ Palettes ▶ Learning Center**, or by choosing **Learning Center** from the Palettes drop-list on the Standard toolbar.

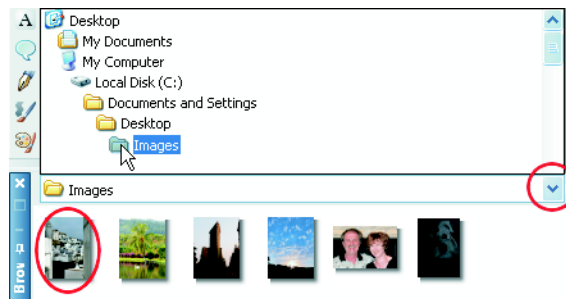


- 2 Now let's use the Learning Center palette to browse for and open a photo. From the palette's **Home** page, choose **Get Photos**, and then choose **Browse**. The palette will display content and tips on using the Browser palette. Also, if for some reason

the Browse palette was not displayed, choosing this item in the Learning Center will automatically make the Browser palette appear.



- 3 In the Browser palette, use the currently browsed folder drop-list along the top to navigate to where you've stored the photo that came with this tutorial. The photo is called "Crop_before.jpg." After choosing a folder, all of its images will appear as thumbnails in the Browser palette.

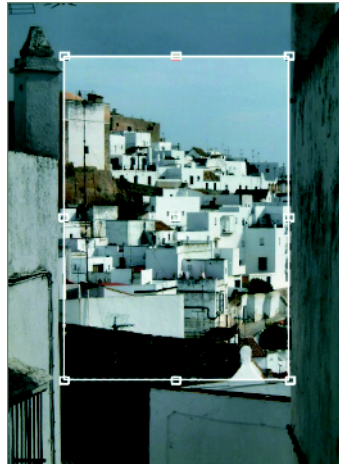


- 4 Double click "Crop_before.jpg" to open it in the PSP X workspace. Now you're ready to make any number of adjustments to the photo.

Crop the photo

- 5 From the Learning Center palette's Home page, choose Adjust, and then choose Crop. The Crop tool becomes the active tool.

- 6 Notice the crop window superimposed on the photo. Drag the sides or corners of the crop window to the dimensions shown below. By cropping the photo, you eliminate unwanted image area and can create a stronger composition.



- 7 In the Tool Options palette, click the **Apply** button to crop the photo.



Apply the One Step Photo Fix command

- 8 The photo seems just a little dark and could benefit from a slight sharpening. Fortunately, Paint Shop Pro X has just the command to instantly correct problems like this. From the Learning Center's **Home** page, choose **Adjust**, and then choose **One Step Photo Fix**. A series of adjustments are quickly applied to the photo,

clearly improving its colors and detail. Depending on the photo, this command can often yield significant improvements.

