

Sending an E-Card



With Corel® Photo Album™ you can share your photos by e-mailing your family and friends a photo E-Card. Simply click the Create tab, select the E-Card project, select a layout, drag a photo into the photo cell, add a text message, and click the E-mail card button. That is all there is to it!

What you'll need:

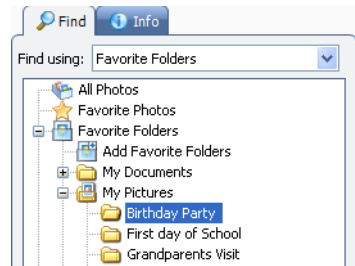
- a collection of digital photos
- Corel Photo Album
- an Internet connection
- a default e-mail application that supports the MAPI Standard (such as AOL®, Yahoo!®, Microsoft® Hotmail®, Microsoft® Outlook®, or Microsoft® Outlook® Express)

When you complete this tutorial, you'll be able to

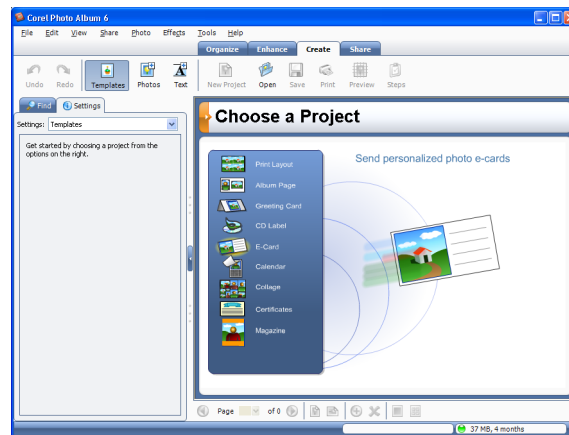
- access the Create tab
- select the E-Card project
- select a layout
- add a photo
- enter a text message
- send the E-card

To send an E-Card

- 1 Click the **Find** tab to open the folder that contains the photos you want to use for an E-card.

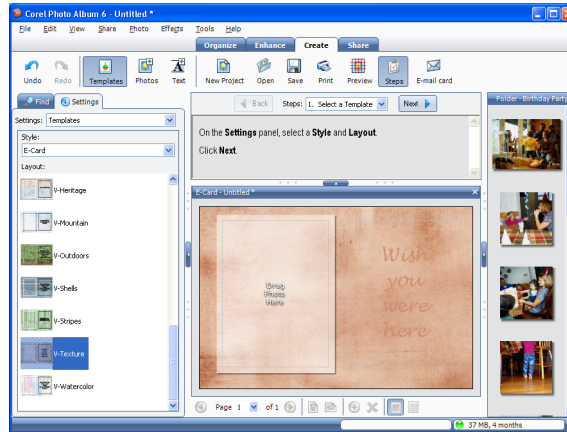


- 2 Click the **Create** tab, and select **E-Card**.

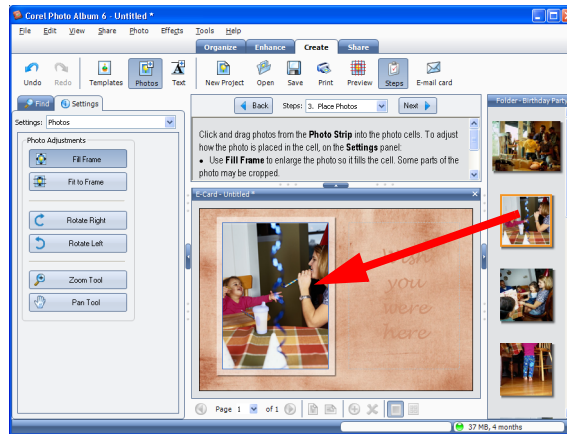


- 3 Paint Shop Photo Album offers you a variety of E-Card styles to choose from. In the Settings panel, select a layout from the list of layouts. The selected layout displays in the Project window.

We have chosen **V-Texture**, but you can choose any style you like.

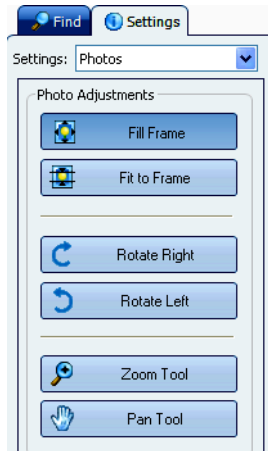


- 4 Now let's place a photo into the cell of the E-Card. From the Photo Strip, click and drag a photo into the photo cell. To remove a photo from a cell, simply drag another photo into the cell.



- 5 If you need to adjust a photo, click one of the following buttons on the Settings panel:
 - **Fill to Frame** button — enlarges the photo to fill the cell. You may notice that some parts of the photo are cropped.
 - **Fit Frame** button — shows the entire photo in the cell. Some parts of the photo may be hidden.
 - **Rotate Right** and **Rotate Left** buttons — changes the photo orientation

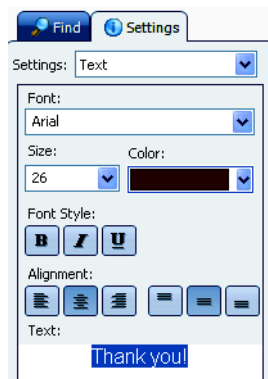
- **Zoom Tool** button — increases or decreases the size of the photo in the cell



- 6 Click in the text field, and enter a message for your E-card. On the Settings panel, type your message in the Text field.

Notice that the text automatically displays in the Text cell. To adjust text formatting, highlight the text on the Settings panel, and do any of the following:

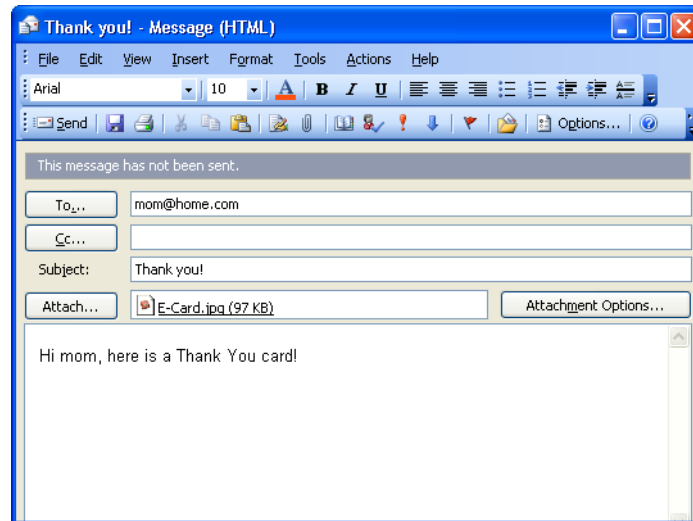
- Select a text style from the **Font** drop-down list.
- Select the text point size from the **Size** drop-down list.
- Choose a color for the text from the **Color** drop-down list.
- Change the font style by clicking the **Bold**, **Italic**, or **Underline** button.
- Change the text alignment by clicking the **Left**, **Center**, or **Right** alignment button.



- 7 To send your card, click the **E-mail card** button on the toolbar to open your e-mail application.



- 8 Complete the **To**, **Subject**, and **Message** fields, and then click **Send**. The e-card is sent as a JPEG attachment to the e-mail message.



Next Steps: In this tutorial, you learned how to send an E-card. To learn how to create greeting cards, see the tutorial "Creating a greeting card."