

## Printing photos using Quick Print



With Corel® Photo Album™ you can you can print your own prints right at home, while saving both time and money. All you'll need is some photo quality paper and a photo quality printer!

### What you'll need:

- a digital photo
- a photo quality printer
- photo quality paper
- Corel Photo Album

### When you complete this tutorial, you'll be able to

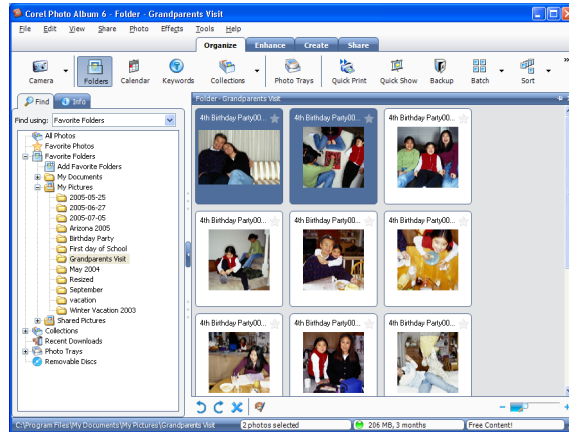
- configure your printer settings
- print a photo

### To print photos using Quick Print

- 1 Click the Find tab, and open the folder that contains the photo you want to print.



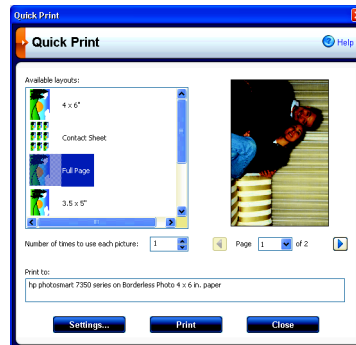
2 Press the **Ctrl** key and Select the photo or photos that you want to print.



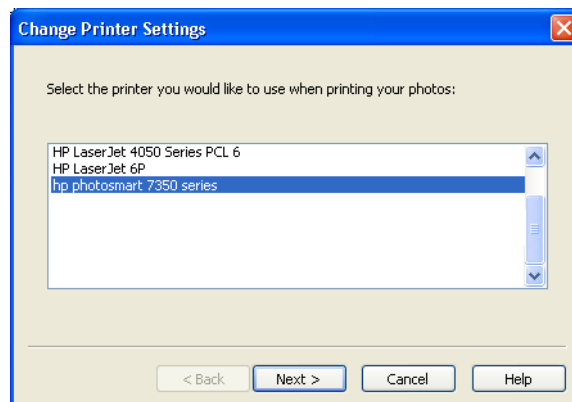
Corel Photo Album automatically detects your default printer, paper, and ink settings. You should configure your printer settings when you have more than one printer, when you want Corel Photo Album to use different settings when printing photos, or if you install a new photo printer.

The selections that you make are remembered by the program and do not affect the default print settings of your system. This is especially useful if you always use the same printer and the same type of paper each time that you print.

- 3 If you need to configure your printer settings, click the **Quick Print** button to open the Quick Print window.

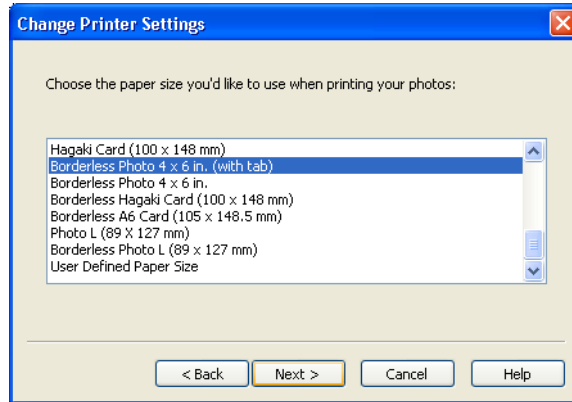


- 4 Click the **Settings** button to open the Change Printer Settings dialog box.
- 5 Select your photo printer from the list of available printers, and click the **Next** button.

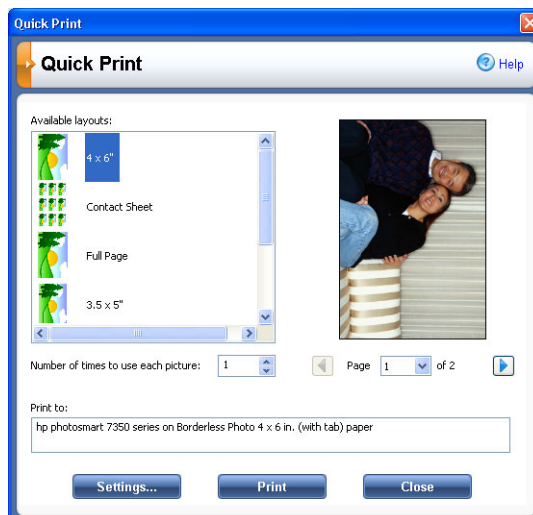


- 6 Select the paper size from the list and click the **Next** button.

Since we usually print 4 X 6 prints, we have selected **Borderless Photo 4 X 6 in.**



- 7 To change the setting for your printer, click the Properties button to open the properties dialog box for your photo printer and configure the settings.
- 8 Click **OK** to close the printer Properties dialog box, and then click the **Next** button to close the Print Setup dialog box and return to the Change Printer Settings dialog box.
- 9 Click the **Finish** button to save your settings and return to the Quick Print dialog box.
- 10 On the Quick Print dialog box, select the appropriate print layout. We are choosing 4" x 6".



- 11 In the Number of times to use each picture, enter the number of copies that you want you want to print of each photo.  
**Tip:** To view each photo use the Page drop-list on the Quick Print dialog box box.
- 12 Click the **Print** to print your photos.

**Next Steps:** In this tutorial, you learned how to print borderless photos using Corel Photo Album. To learn how to share your photos using other print methods, see the tutorial “Creating a greeting card.”