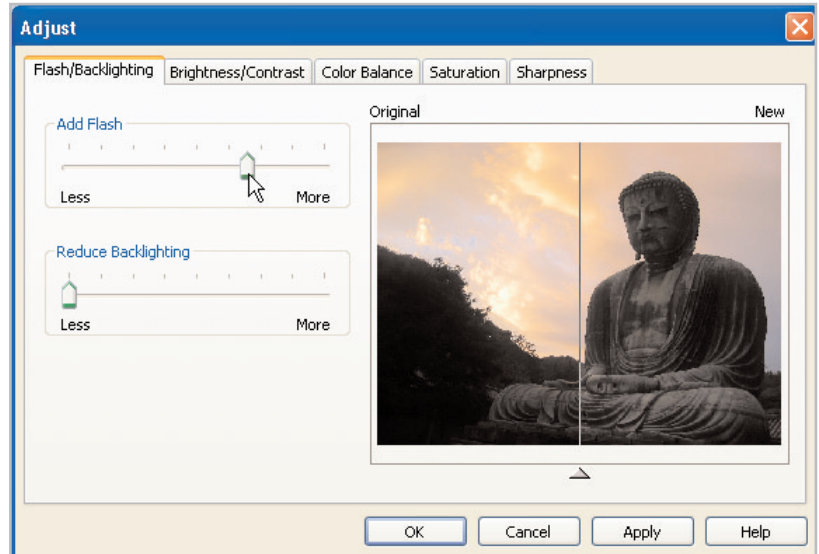


Adjust Flash and Backlighting

If your outdoor photos appear too shadowy or washed out to see all the details, don't worry. Chances are your digital camera captured all the information you need. By lightening or darkening areas in your photos, you can bring out the details it captures. Paint Shop Photo Album can help you expose details lurking in the shadows and add contrast to washed out areas. Photo Album has several easy tools to help you add flash to an image, reduce the backlighting, and fix other lighting problems. Here we will focus on adding flash and reducing backlighting, common issues in low-light photography, especially when shooting towards the light source.



What you'll need:

- Paint Shop™ Photo Album™ 5
- Adjust-AddFlash.jpg from the Samples album

When you complete this tutorial, you'll be able to:

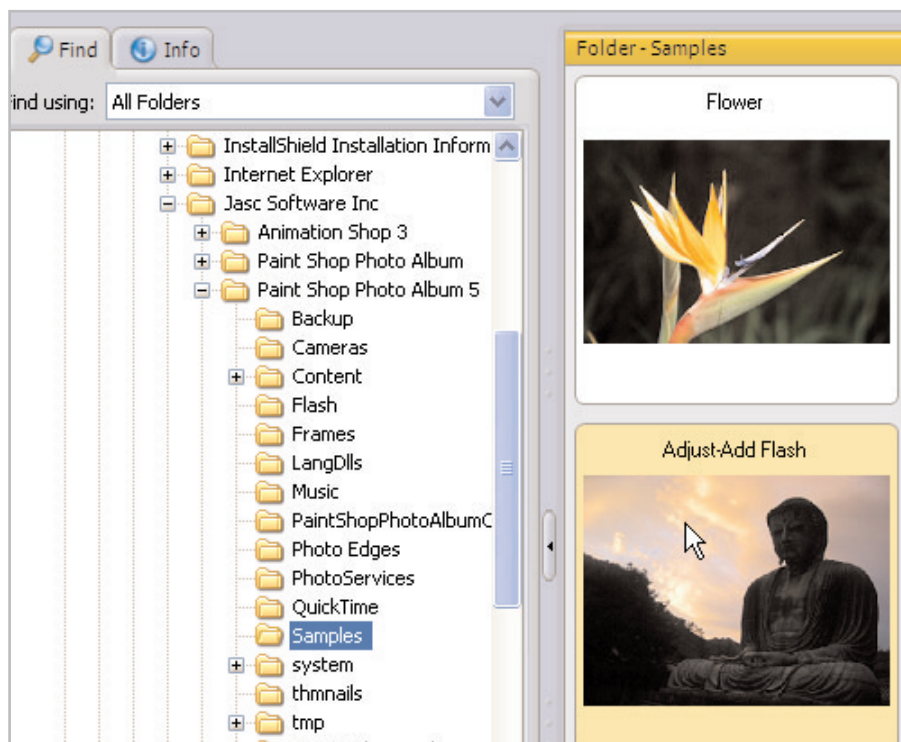
- Open the image in the Image Browser window
- Open the Adjust dialog
- Add flash to an image
- Reduce backlighting
- Apply the correction

To adjust the flash and backlighting:

1. Choose **Start > Programs > Jasc Software > Jasc Paint Shop Photo Album** or double click the Paint Shop Photo Album icon on your desktop to open Photo Album.

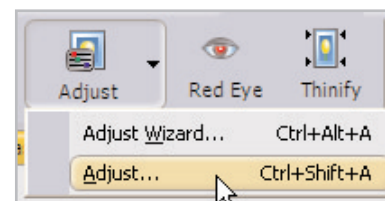


2. Use the Find panel to open the folder that contains the photo you want to use. Thumbnails of the photos will display on the Organize tab. Once you find the photo you want to use, double-click it to open it in the Enhance tab.

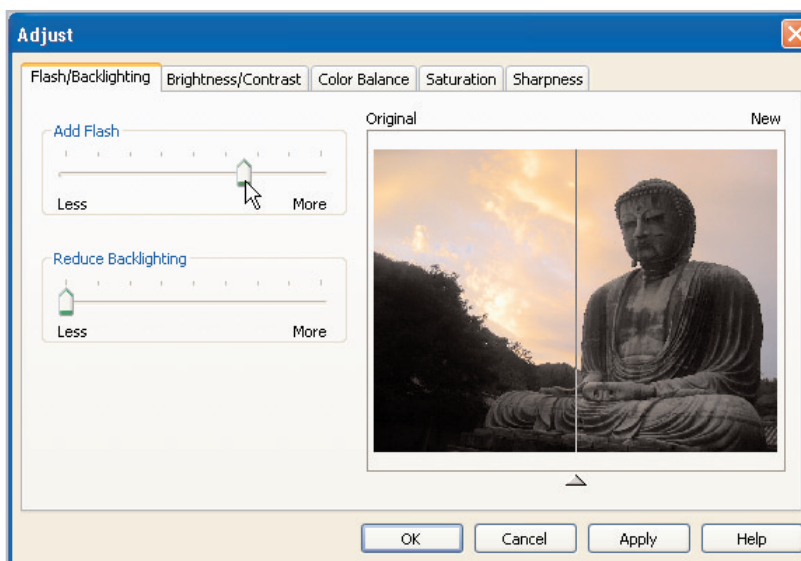


Note: For this tutorial, we'll use a picture found in the Samples folder (Adjust-Add Flash.jpg). You can also follow along using your own photo that has a light background and a dark subject.

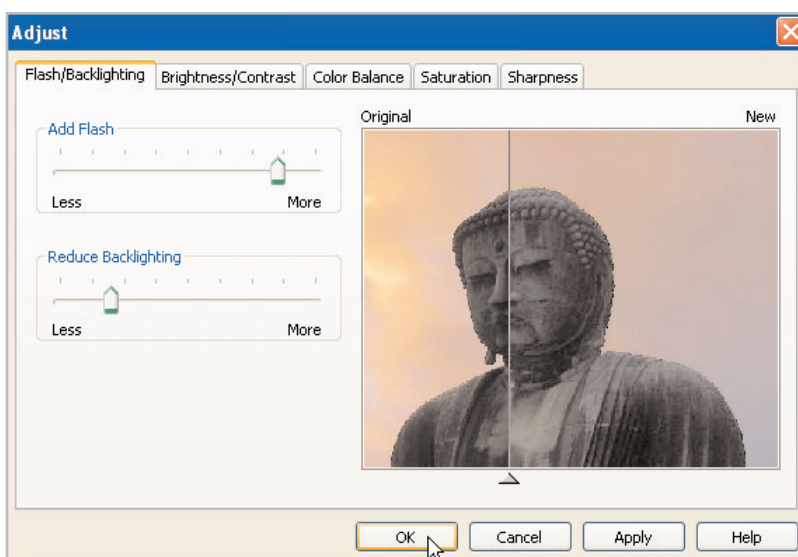
3. On the Enhance tab, click the **Adjust** button on the toolbar and choose **Adjust** to open the Adjust dialog.



4. The first tab in the dialog is the Flash/Backlighting tab. The left side of the preview window displays the original image, while the right side displays the new image. Drag the preview slider, located below the preview pane, to view more or less of the photo with the correction applied.



5. Drag the **Add Flash** slider to the right to brighten the subject of the image and pull out more of its details. Click **Apply** to apply the adjustment. Since this image is very dark, you can even apply the Add Flash adjustment twice. Drag the **Add Flash** slider again to brighten the photo further. Drag the **Reduce Backlighting** slider to darken the background of the image in the photo. In our example the background is the sky and the trees on the horizon.



6. Click **OK** to apply the adjustment to your photo. Here, you can see the before and after of our photo.



Next Steps:

Now that you've learned how to use the Flash and Backlighting controls to brighten your photos, you can experiment with Paint Shop Photo Album's other adjustment tools like the Adjust Wizard or Quick Fix to enhance your photos.

