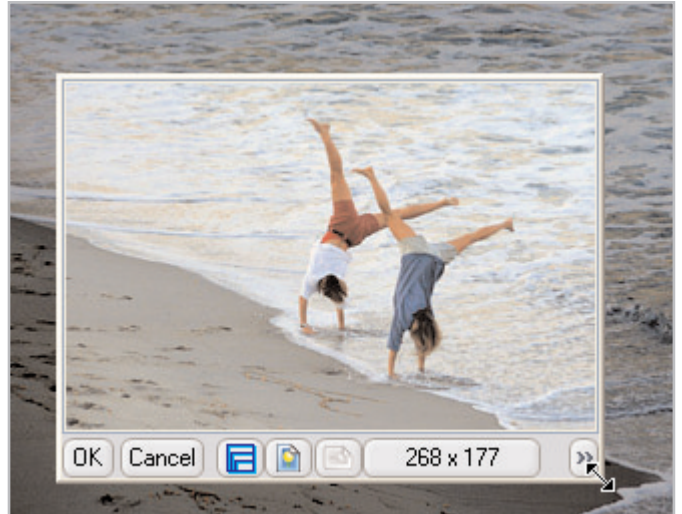


Crop Like a Pro

Sometimes your photos just aren't framed correctly. The subject and lighting are good, but the subject is too far away or off to one side of the photo. Other times the composition is confusing—you took a photo in a public place and a stranger got caught in the frame at the edge of the photo, taking away attention from your subject.

Use Photo Album's Crop tool to eliminate unwanted elements at the edges and draw attention to the photo subject. We'll learn to center the composition on the subject by cropping the photo and resizing it to a standard 4 X 6-inch photo size. To retain your original image, be sure to save the image with a new file name before working on the new one.



What you'll need:

- A digital photo
- Paint Shop™ Photo Album™ 5

When you complete this tutorial, you'll be able to:

- Open your photo
- Crop your photo

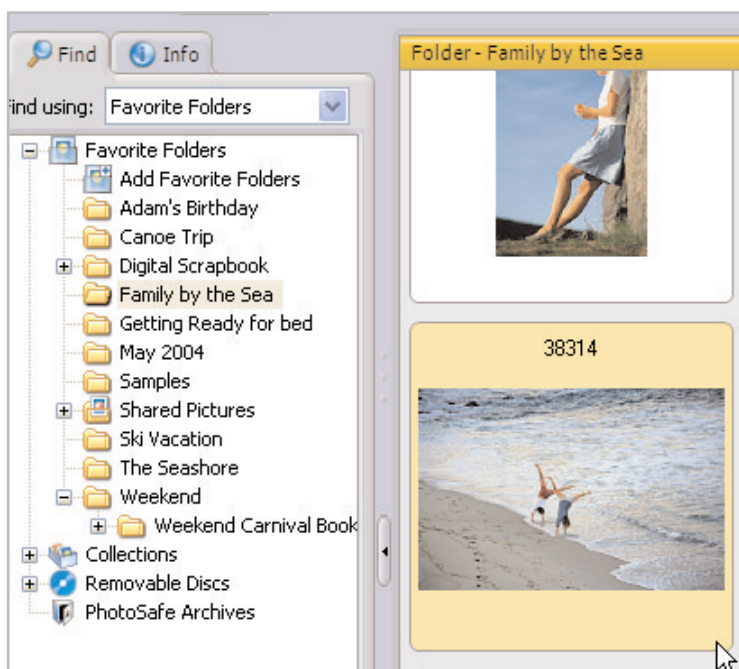
Open Your Photo

To crop photos:

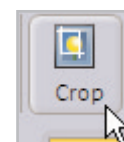
1. Choose **Start > Programs > Jasc Software > Jasc Paint Shop Photo Album** or double click the Paint Shop Photo Album icon on your desktop to open Photo Album.



2. Use the Find panel to open the folder that contains the photo you want to use. Thumbnails of the photos will display on the Organize tab. Once you find the photo you want to use, double-click it to open it in the Enhance tab.

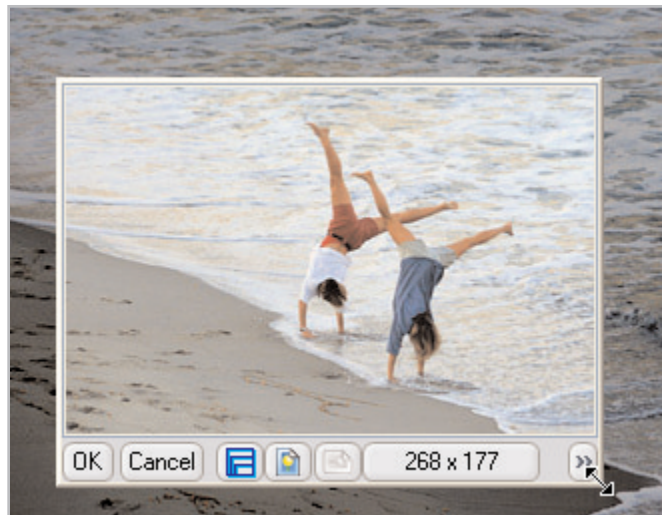


3. Click the **Crop** button to open the Crop window. When you open the Crop window, the window is placed on top of the image. The areas outside of the crop window will be removed when you crop the image.

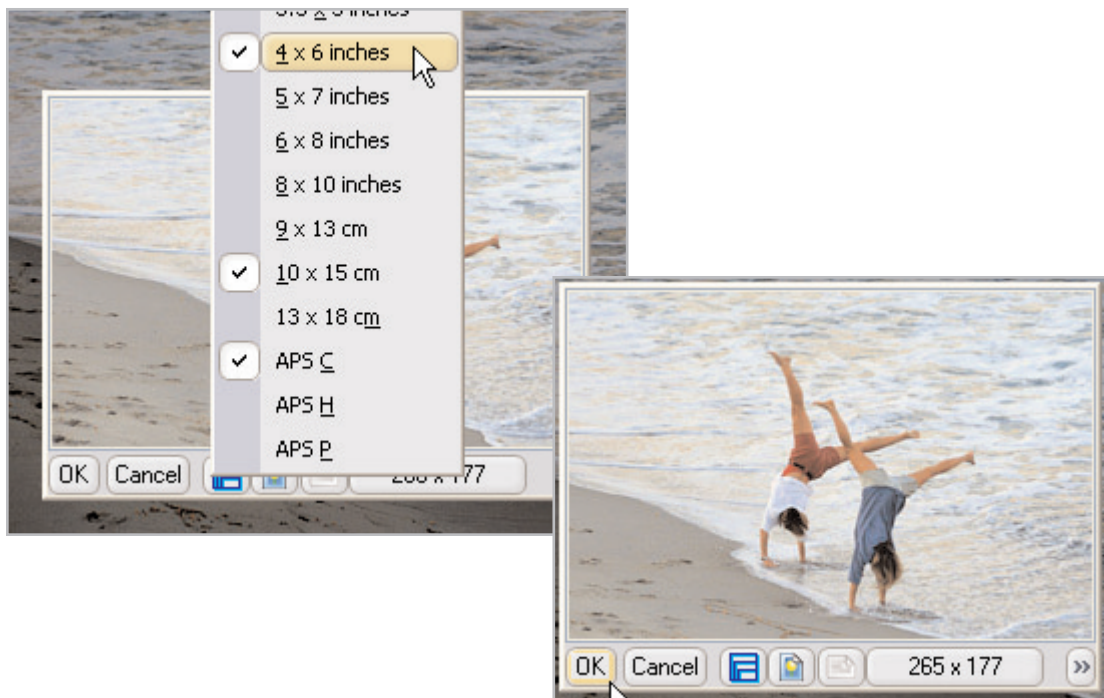


4. Position the Crop window on the photo using the following methods:

- Click and drag any side of the Crop window to change the size of the window.
- Click and drag any corner of the Crop window to change the overall size of the window without changing the shape of the window.
- Click anywhere on the image part of the Crop window (the pointer becomes a 4-headed arrow) and drag the window to move the crop position.
- Click the **Portrait** or **Landscape** buttons at the bottom of the window to change the orientation of the Crop window.

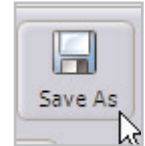


5. Specify a specific crop size. For this tutorial we'll use the **4 X 6** crop size. Click the **Ratio** button at the bottom of the Crop window and select **4 x 6 inches** from the pop-up menu. Click **OK** to crop the image.



Note: If the Size, Portrait, Landscape, or Ratio buttons on the bottom of the Crop window are not displayed, click the menu button to choose the options from the pop-up menu.

6. Click **Save As** to save your cropped photo to a new file and preserve the original uncropped file.



Next Steps:

You've just seen how easy it is to crop an image and set it to a standard photo size. Now you can add a frame or photo border to share your creation with friends and family.

