

Create Your Own Holiday Gift Tags

Add your own festive touch to all your holiday packages this year, by creating a unique gift tag. With Paint Shop Pro you can create tags, print them out on Avery labels, and stick them to every gift you give. Once you learn how easy it is to create these, you can make them for all the gifts you give throughout the year.

What you'll need:

- Paint Shop™ Pro® 9
- Download gifts.pspimage sample image

When you complete this tutorial, you'll be able to:

- Add a Picture Frame to an image
- Use the Color Replacer Tool
- Add Text to an image
- Add a background image



Create a New Image

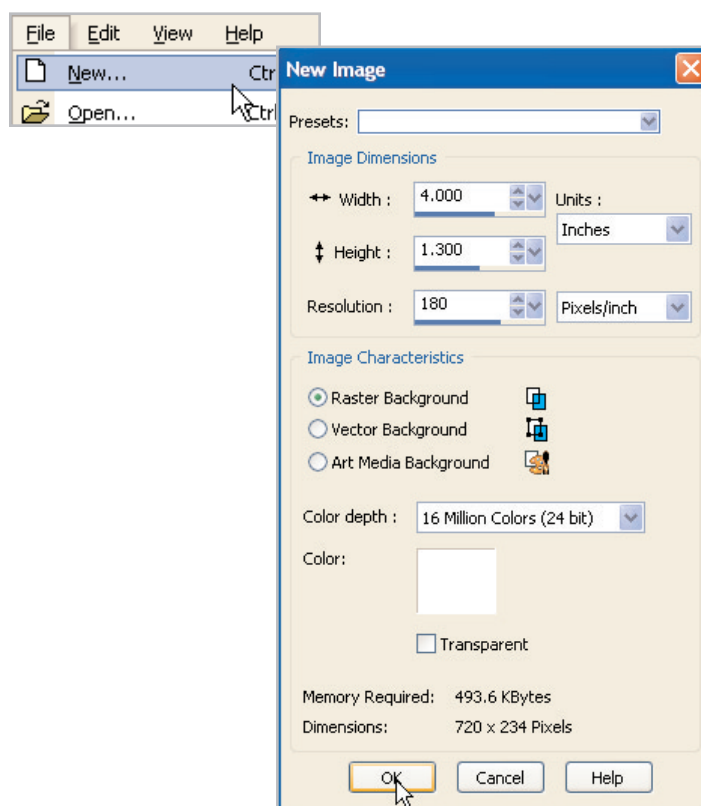
1. Choose **Start > Programs > Jasc Software > Jasc Paint Shop Pro** or double click the Paint Shop Pro icon on your desktop to open Paint Shop Pro.



2. Choose **File > New**. In the New Image dialog set:

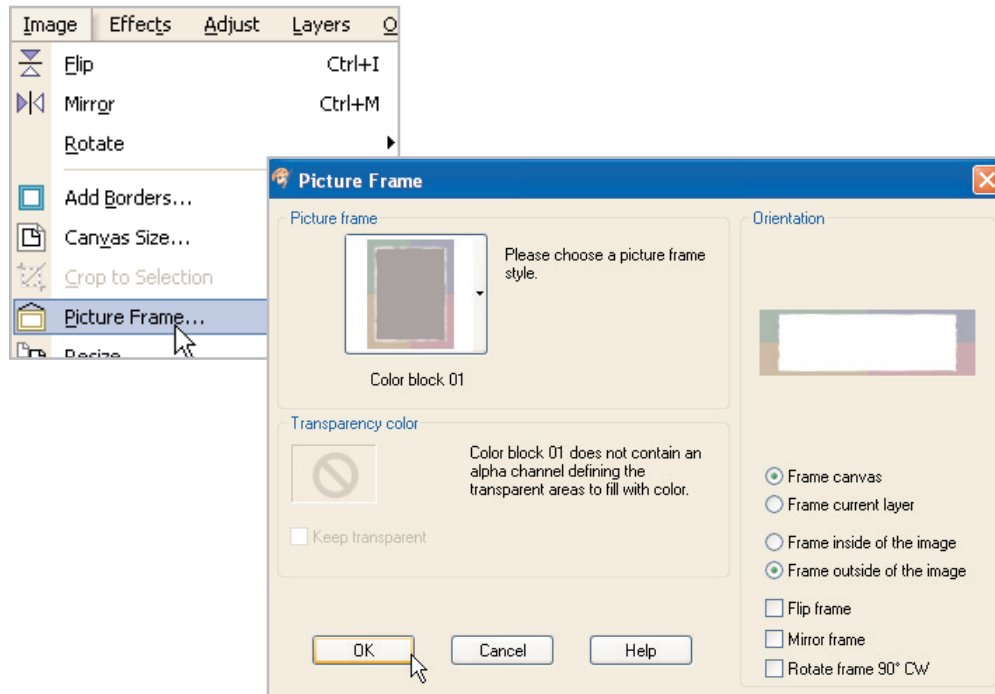
- Units: **Inches**
- Width: **4**
- Height: **1.3**
- Image Characteristics: **Raster Background**
- Color: **White**

Once you've made your settings, click **OK** at the bottom of the dialog.



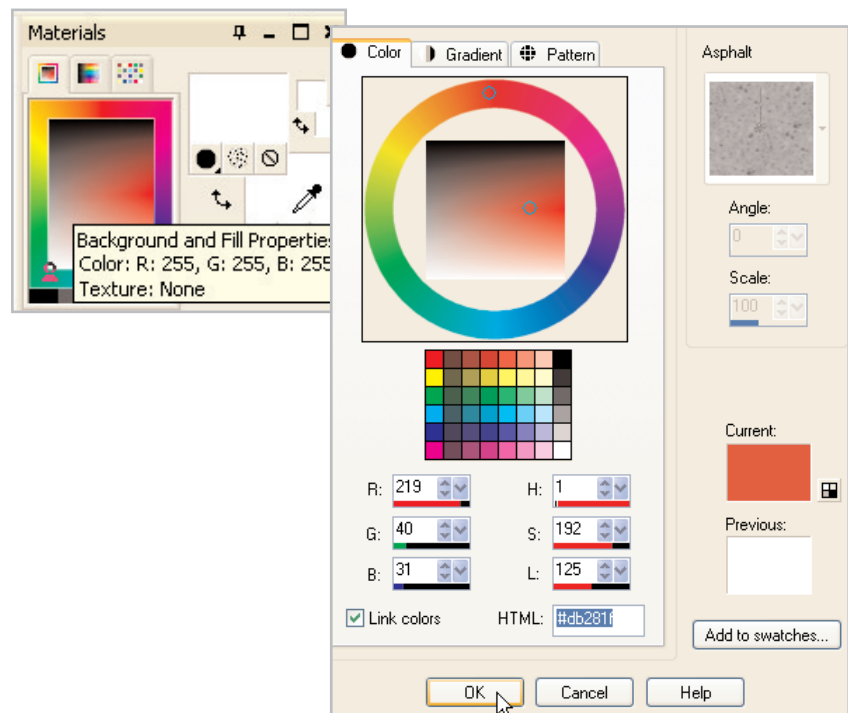
Add a Frame

3. Choose **Image > Picture Frame**. Click the arrow next to the Picture Frame thumbnail to display all the available frames. For this sample we're using frame **Color Block 01**. Once you choose a frame, the thumbnails will close. Now, from the Orientation section make sure to select **Frame outside of the image**, and then click **OK**.

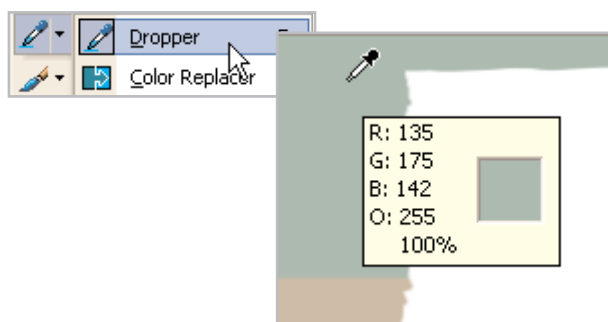


Change the Frame Colors

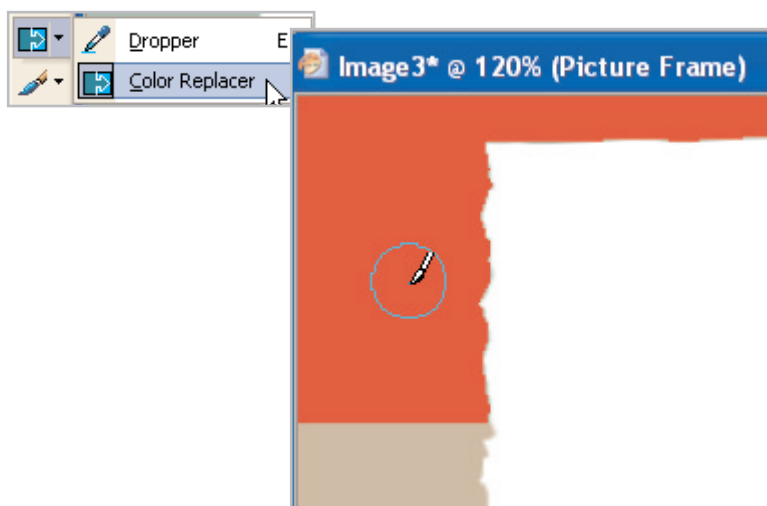
4. On the Materials Palette, click the background swatch (the bottom one) and in the Material Properties dialog, set the HTML color to **#db281f**. Once you're done click **OK**.



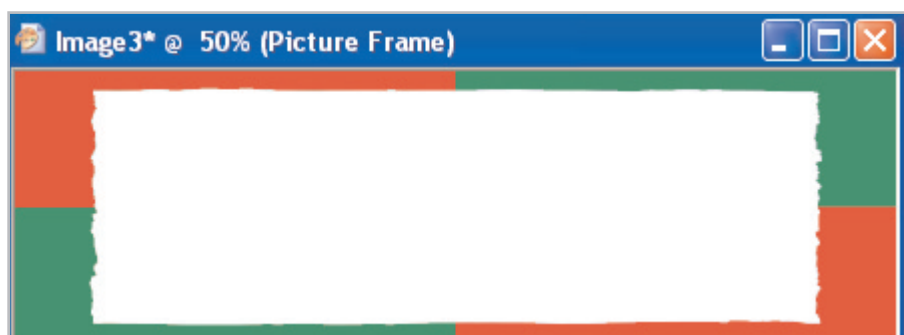
5. Select the **Dropper** Tool from the Tools Toolbar and then click the green corner of your picture frame. You should see the foreground swatch on the Material Palette change to this green color.



6. Now select the **Color Replacer** from the Tools Toolbar. Place your cursor in the green area of your frame and with the right-mouse button, double click to see the green change to red.

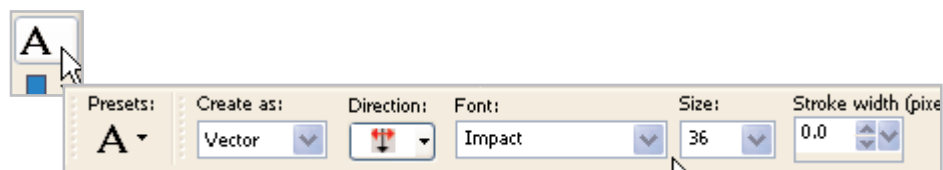


7. Repeat Steps 5 and 6 on the lavender corner (lower right) to fill that corner with red.
8. For the other two corners, repeat steps 4-6, only this time use HTML color **#159727** in the Material Properties dialog.



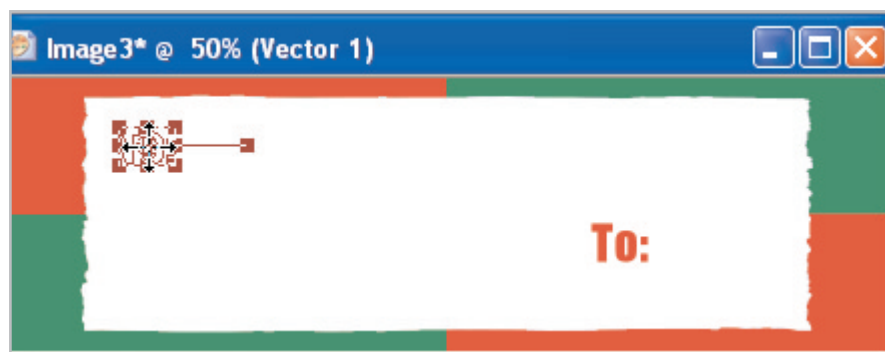
Add Text

9. Select the **Text Tool**. On the Tool Options Palette, you can choose the font, font size, and other text options you'd like for your gift tag. For our sample we used a font called **Impact** and a size of **36**. Make sure to create your text as **Vector**, so you can move it easily around your tag. To change the color of your text, click the background swatch on the Materials Palette, and choose the color you want. We're using the same red we used for the frame (HTML color **#db281f**).



10. Now click, anywhere on your tag. In the Text Entry box, enter your text. We're making our tag generic, so we can write the name later. But if you like, you can add it now. Once you're done entering your text, click **Apply**.

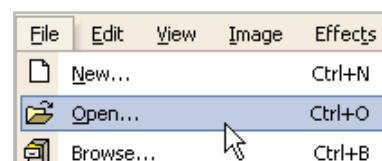
11. Click the middle of the text box and drag your text into place.



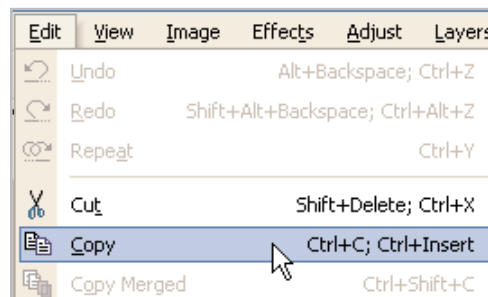
12. Repeat steps 9-11 to add the 'from' text.

Add a Background Image

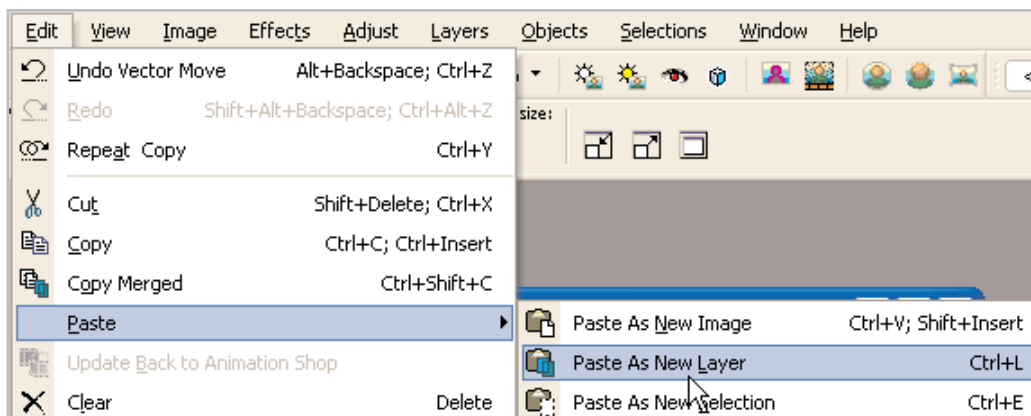
13. Choose **File > Open** and browse to where you saved the gifts.pspimage you downloaded earlier.



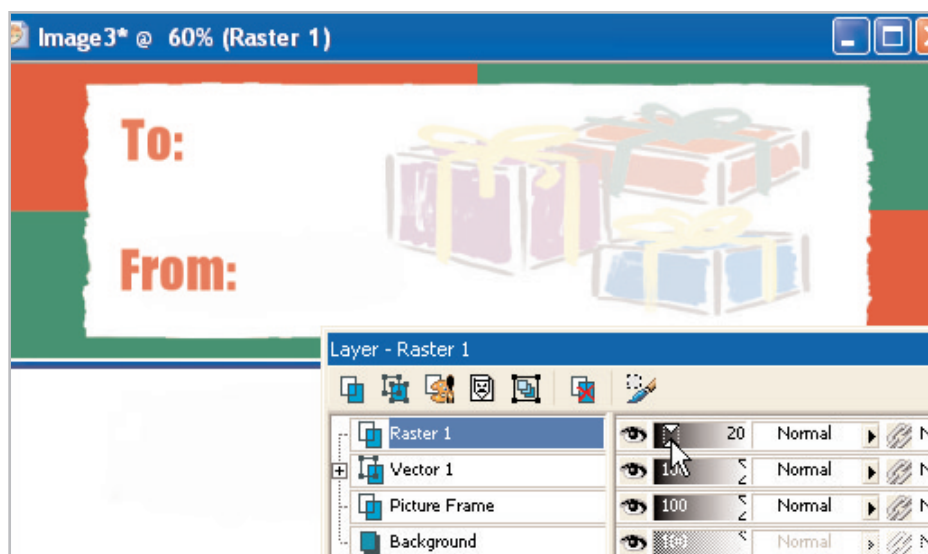
14. Once the image opens, choose **Edit > Copy**.



15. Now, go back to your tag image and choose **Edit > Paste > As New Layer**.



16. On the Layer Palette (which you can open by pressing **F8**, if it's not already open), click the layer named **Raster 1** and slide the opacity down to **20**.



17. Now choose **Layers > Merge > Merge All (Flatten)** and you're done!

Next Steps:

You can print these tags on Avery 5160 labels for smaller tags or Avery 8769 labels for larger tags. Now that we've shown you how easy it is to make a festive gift tag, you can create tags for any gift-giving occasion. Next time try using your digital photos as the background!

