

Using the History Palette

Part 2 - Create & Convert Quick Scripts

By JP Kabala

Quick Scripts are such a useful and intuitive new feature of the History Palette that it really is worth your while to take a close look at it. Photographers will find this feature useful because they often have several shots taken under similar conditions which require similar adjustments. With Quick Scripts, you simply adjust the first in the series, save the commands as a temporary Quick Script, and one-click apply the adjustments to each of the other images.

Webmasters will enjoy this feature as well! Perhaps you have dozens of similar images- buttons, perhaps, or images in an e-commerce catalog or photo gallery--that all need the same kind of changes: resizing, cropping, adding a drop shadow, and exporting as a JPG or GIF, perhaps. Using Quick Scripts can really speed up that process.

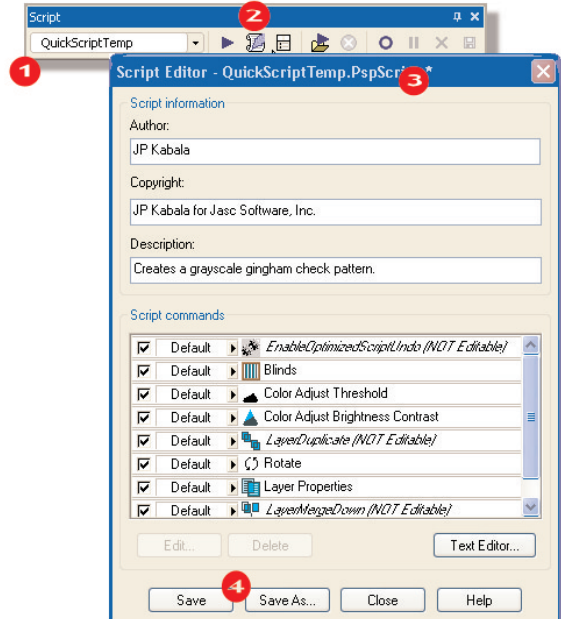
Graphic designers and animators will like the way Quick Scripts allow you to automate repetitive actions. Need to duplicate, resize, and rotate the contents of a layer 10 times? Just Quick Script it!

What you'll need:

- Paint Shop™ Pro® 9

When you complete this tutorial, you'll be able to:

- Create a Sample Image
- Create a Quick Script
- Apply a Quick Script to a New Image
- Save a Quick Script in the Scripts Folder

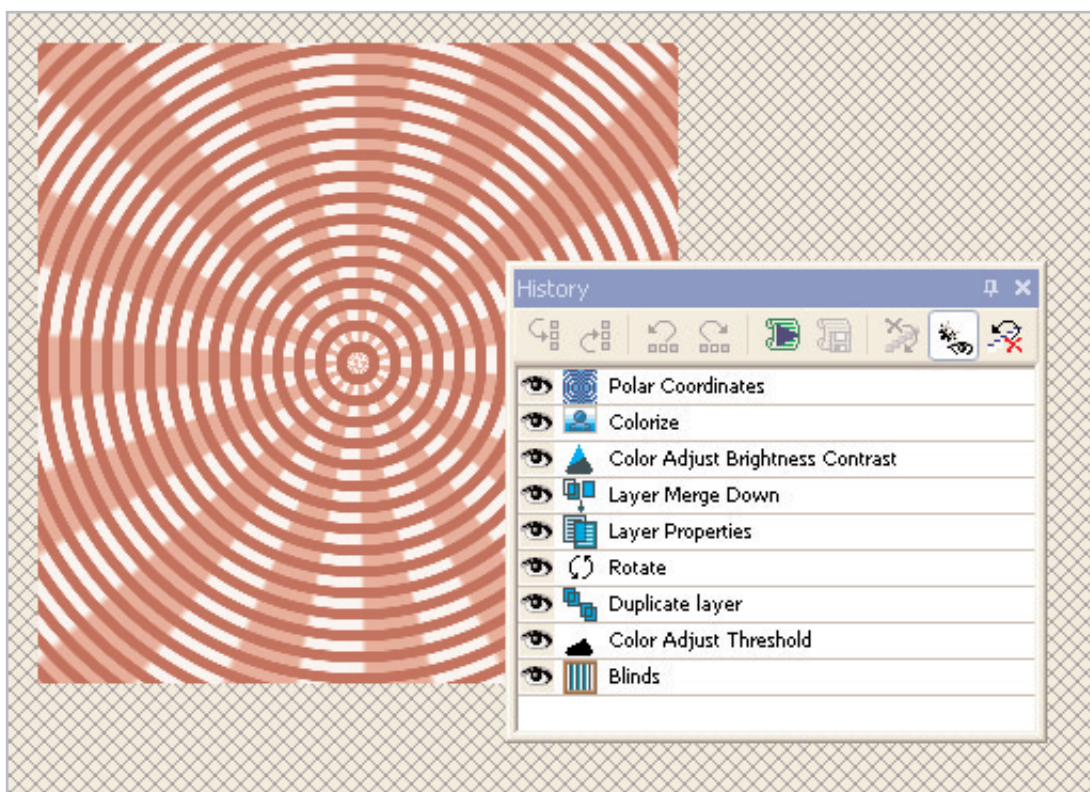


Jasc Software®

the power to create®
www.jasc.com

1. Open a new small image, 300 x 300 pixels with a white raster background.

2. We're going to have to do some things before we can save them as a script, so let's execute the following series of steps:
 - Choose **Effects > Texture Effects > Blinds**. When the dialog opens, click the curved arrow icon in the upper right corner to reset the default values and click **OK**
 - Choose **Adjust > Brightness and Contrast > Threshold**. When the dialog box, click the curved arrow icon in the upper right corner to reset the default values and click **OK**
 - Choose **Adjust > Brightness and Contrast > Brightness/ Contrast**. When the dialog box, set the Brightness to **140** and the Contrast to **0** and click **OK**.
 - Choose **Layer > Duplicate**
 - Choose **Image > Rotate > Free Rotate**. When the dialog opens, choose **Rotate single layer around canvas center** and **90** degrees (direction is unimportant). Click **OK**.
 - On the Layer Palette, double-click the **Copy of Background** layer. If you don't see the Layer Palette, press **F8**. When the dialog box opens, change the Layer Blend Mode to **Multiply** and the Opacity to **50%**. Click **OK**.
 - Choose **Layers > Merge > Merge Down**. You should now have a gingham check pattern.
 - Choose **Adjust > Hue and Saturation > Colorize**. When the dialog opens, click the curved arrow icon in the upper right corner to reset the default values and click **OK**.
 - One last preparatory step. Choose **Effects > Distortion Effects > Polar Coordinates**. When the dialog box, choose **Rectangular to Polar** and **Wrap** and click **OK**.

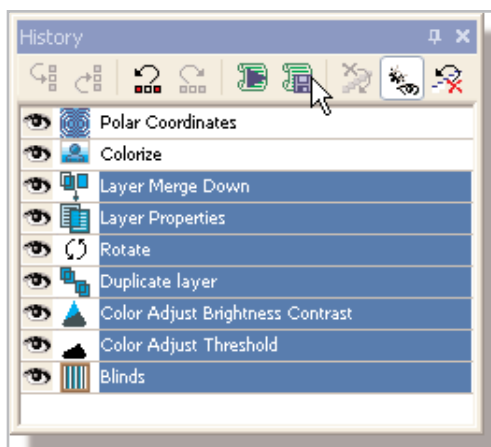


Save a Quick Script

3. On the History Palette, click the name of the action **Layer Merge Down**.
4. Press and hold the **Shift** key.
5. Click the name of the action **Blinds**. Release the Shift key.
6. Click the **Save Quick Script** icon.

Test Your Quick Script

7. Open a new image of any size (however, for the purposes of this particular script, it needs to have a Raster background that is not transparent). When the image opens, click the **Run Quick Script** icon.



8. The default is for Quick Scripts to run in interactive mode, pausing at each step to allow you to “tweak” the settings and make changes. To reproduce your settings exactly, simply click **OK** each time the script pauses.

9. To turn off interactive mode, click the **Toggle Execution Mode** icon on the Scripts Toolbar. If you need to do this often and displaying the Scripts Toolbar disrupts your workflow, consider using Paint Shop Pro's Customize feature to add this icon to the History palette toolbar.

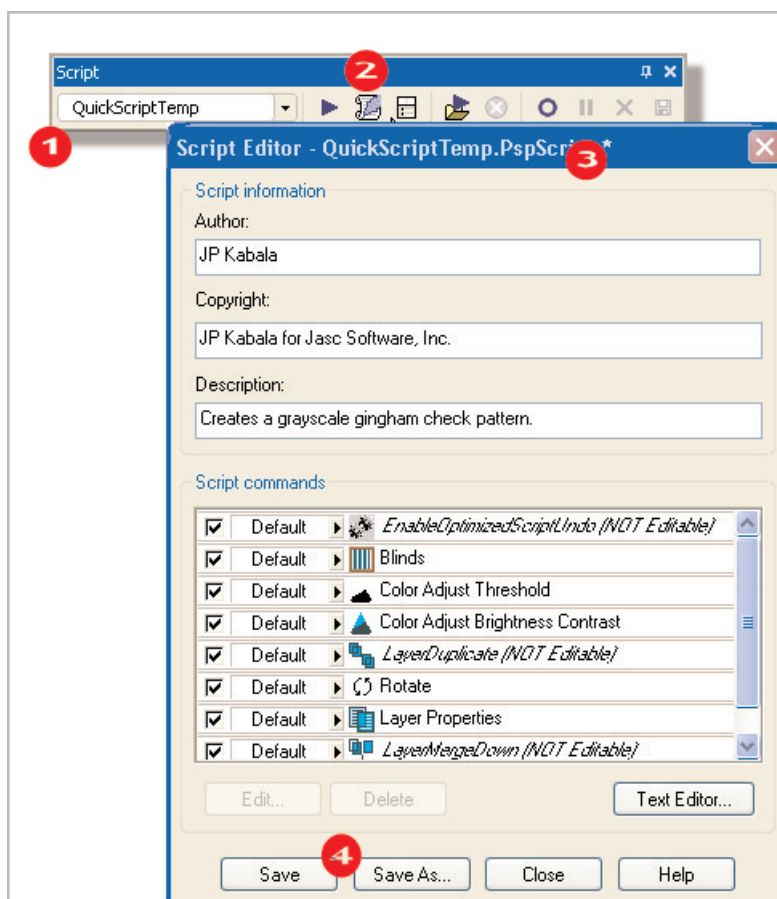
That's all there is to creating a Quick Script! You can now apply that same series of commands to any images that you work on during your Paint Shop Pro session. You can even include pre-recorded or programmed Paint Shop Pro scripts as a part of your Quick Script.

But, there is one small thing to note. Because the Quick Script is only a temporary file, it won't be saved when you close Paint Shop Pro.

Save Quick Script to Scripts Folder

Here's how you convert a "Quick Script Temp" to a more durable script.

10. On the Script Toolbar, locate and choose the **QuickScriptTemp** entry in the drop-down list.



11. Click the **Edit Selected Script** icon to the right of the list.
12. When the dialog opens make any desired changes to the data fields.
13. Save the script with a new name to the appropriate Scripts folder. Now you can repeat these commands any time you open Paint Shop Pro.

Next Steps:

Now that you've learned to create temporary Quick Scripts and then convert them to real, working components of your every day Paint Shop Pro toolset, you should begin to see one more way that the automation features introduced in Paint Shop Pro 8 and enhanced in Paint Shop Pro 9 can really partner with you to improve your workflow, save time, increase consistency, and ultimately allow you to produce more attractive and professional results.

