

Create an Art Collage

Anyone with children knows how much art they bring home from school everyday, those backpacks full of art add up fast. Now, you don't have to part with a single precious piece or worry about where to store it all. With Paint Shop Pro Studio you can create a collage of your child's artwork that's easy to store and preserves those masterpieces for years to come.



What you'll need:

- Paint Shop™ Pro® Studio
- FREE Squiggle pattern
- A collection of your child's artwork that you've take a digital photo of or scanned in using your scanner

When you complete this tutorial, you'll be able to:

- Add multiple photos to a background
- Add frames or borders to images
- Apply text to a collage
- Work with layers

Jasc Software®

the power to create®
www.jasc.com

Before You Get Started

1. Before you get started you'll want to find the collection of photos you want to use in this collage. If you haven't snapped pictures of your child's masterpieces yet, don't worry. You can follow along using any five or six photos you have on your computer.

2. Once you've chosen the photos you want to use in your collage, make sure you've download the FREE Squiggle pattern, we'll be using this for the background. Download the pattern and make sure to place it in your patterns folder. The default location for your patterns folder is:

C:\Program Files\Jasc Software Inc\Paint Shop Pro Studio\Patterns

Just save the pattern in that folder like you'd save any other image. Now we're ready to start!

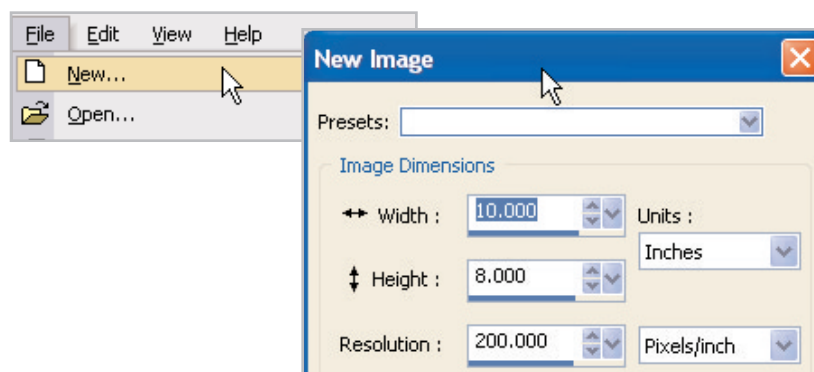


Create a New Image

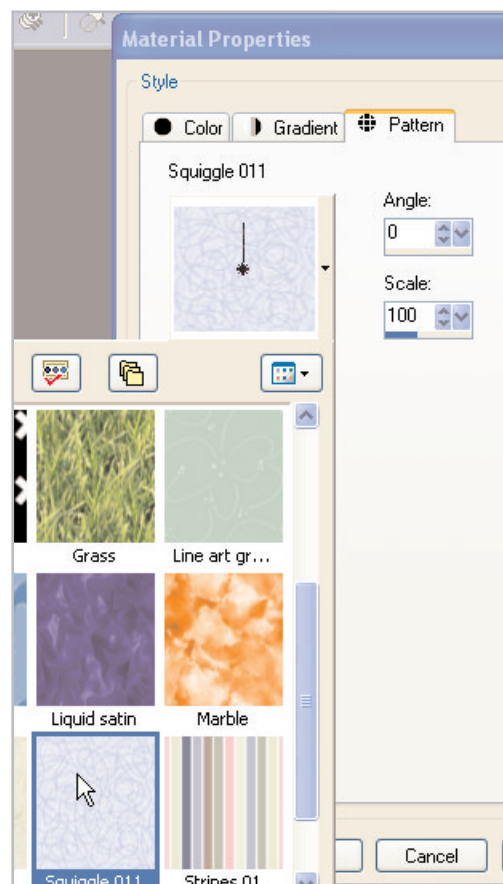
3. Choose **Start > Programs > Jasc Software > Jasc Paint Shop Pro Studio** or double click the Paint Shop Pro Studio Icon on your desktop to open Paint Shop Pro Studio.



4. Choose **File > New**. In the New Image dialog, set your Image Dimensions to:
 - Width: **10**
 - Height: **8**
 - Units: **Inches**

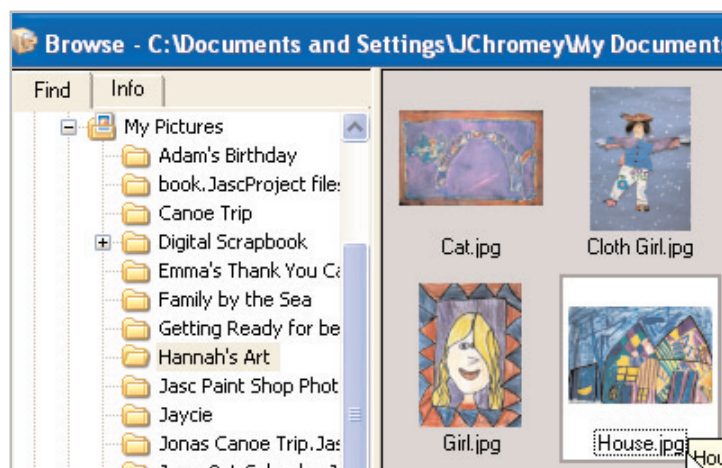


5. In the Image Characteristics section, make sure **Raster** is selected and then click inside the **Color** swatch. In the Material Properties dialog, click the **Patterns** tab, then click the **arrow** next to the pattern sample, scroll down until you see **Squiggle 011**, and click it to select that pattern (if along the way you find a pattern you like better, feel free to select that one). Once you've selected your pattern click **OK**. This brings you back to the New Image dialog. Click **OK** again and you should have a new image filled with your pattern.

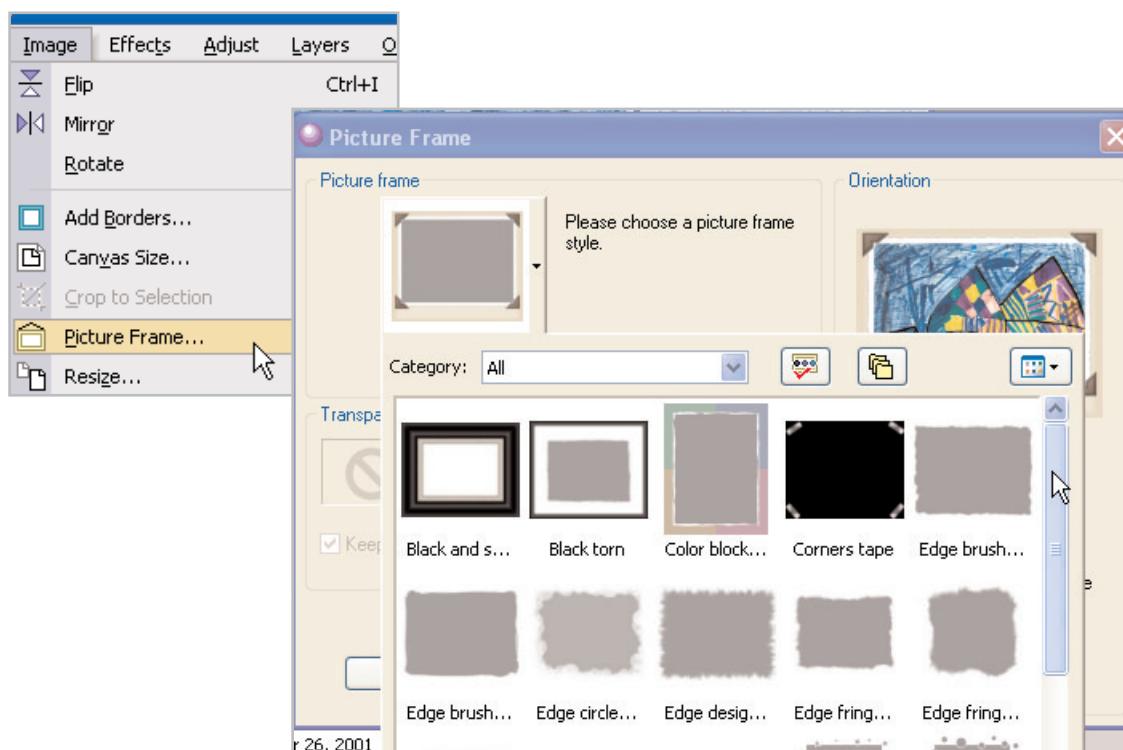


Add a Frame

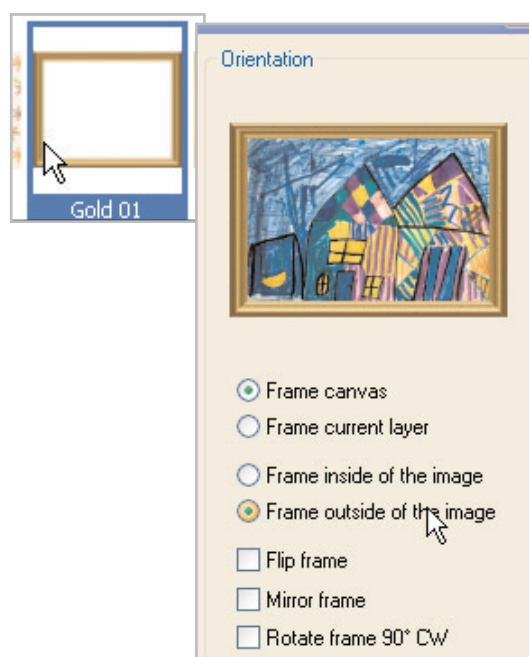
6. Choose **File > Browse**, to open the Studio Browser. Use the Browser to navigate to the folder where the photos you want to use are stored. Double-click a photo you want to add a frame to, to open it in Paint Shop Pro Studio.



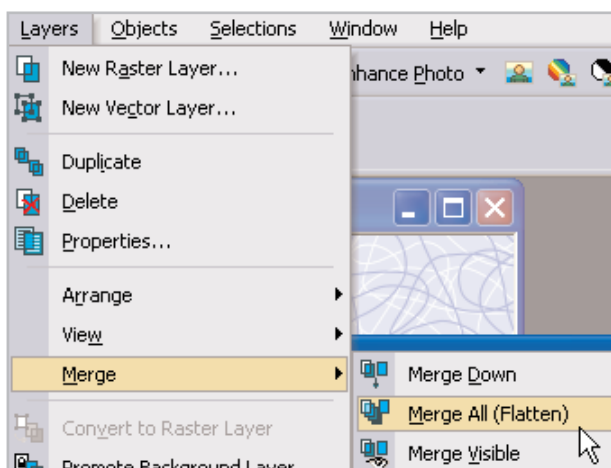
7. Once your photo opens, choose **Image > Picture Frame**. Click the **arrow** next to the Frame sample to see all the Frames you can choose from.



8. For this project, we're using the Frame called **Gold 01**, but you can choose the Frame you like. Click the Frame you want to use to select it. Then, in the Orientation section, choose to **Frame canvas** and **Frame outside of the image**. When you're ready, click **OK**.

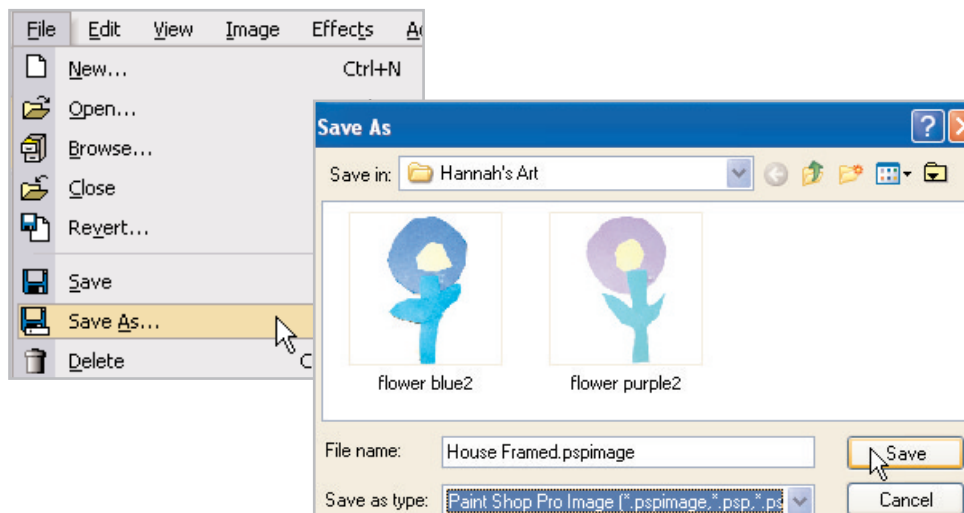


9. Now choose **Layers > Merge All (Flatten)**. This will merge our Frame with our photo.



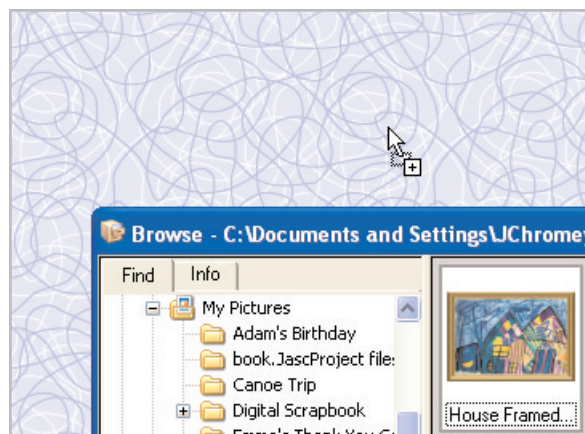
Save Your Framed Photo

10. Now Choose **File > Save As**, and save your photo with a new name. We're calling ours **House Framed**.



Use the Browser to Add Photos to Your Background

11. Choose **File > Browse** to open the Paint Shop Pro Studio Browser again. Navigate to the folder where the photos you are using for this collage are stored. Once you find the first photo you want to add, click it and drag it onto your background. For this example, we're going to add our framed photo.



Resize & Position Photos in Your Collage

12. Don't worry if the photo you added to your collage is larger than you like, we can fix that easily. Select the **Deform** Tool from the Tools toolbar. Now, to resize proportionately, right-click one of the red boxes in the Deform box's corners and just drag to the size you want.



13. Once the photo is the size you want, you can click on the circle in the middle of the Deform box and drag the photo to the position you want it.



Save Your Collage

14. Choose **File > Save As**, and save your collage. You'll want to make sure to save frequently throughout the creation process. To save just press Ctrl +S.

Add More Photos & Rotate

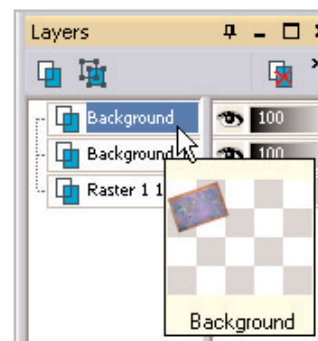
15. Now that you know how to add photos from the Browser, you can drag as many photos as you'd like onto your collage. Just keep adding and resizing photos until you have just what you want.

16. You can give your photos a jaunty tilt within your collage using the Deform Tool. Select the **Deform** Tool like you did in Step 12. This time, instead of resizing by dragging one of the corner boxes, we'll rotate by clicking the box at the end of the line that extends from the center circle. Just click that box and drag your mouse to rotate your photo. When you're done move the photo into place by clicking that center circle and dragging.

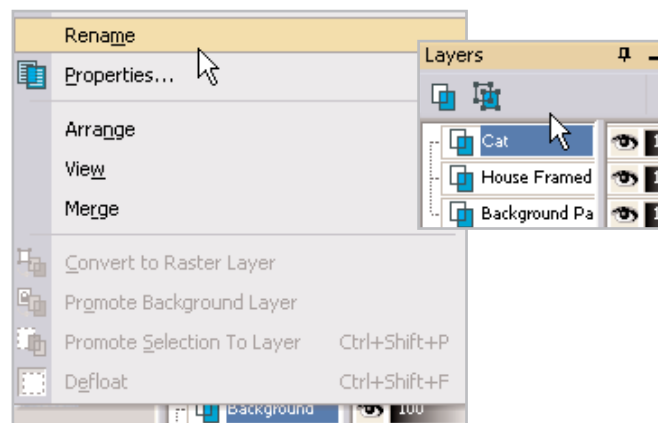


Organize Your Layers Palette

17. When you're working on a collage that has many layers, it's a good idea to organize the Layers Palette. Each time you drag a new photo onto your background, you're creating a new layer. The Layers Palette's located in the bottom right of your screen. Mouseover one of the layers, and a small thumbnail will pop up showing you what that layer contains.

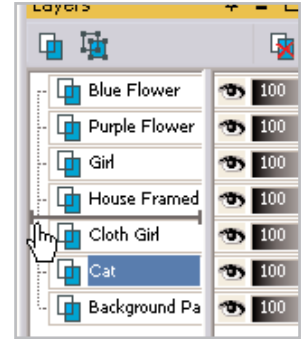


18. To keep our Layers Palette organized, rename the layers so you know what they contain. Just right-click the layer and choose **Rename**. Enter a new name for your layer in the field. This way, when you want to move stuff around you can select the layer you need and just use the Mover Tool to drag photos into a new position.



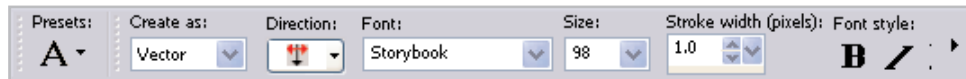
Overlap Photos

19. Now that your Layers Palette is organized it's easy to make sure the images you want to overlap are in the right order. Just find the layer containing the photo you want on top and drag it above the layer containing the photo you want underneath. In this example we wanted the Cat layer to overlap the Cloth Girl layer.

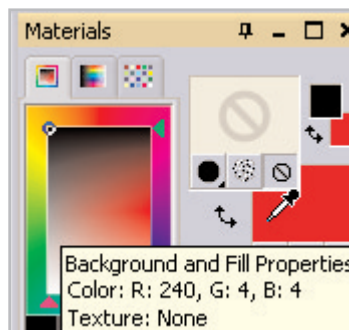


Add Text

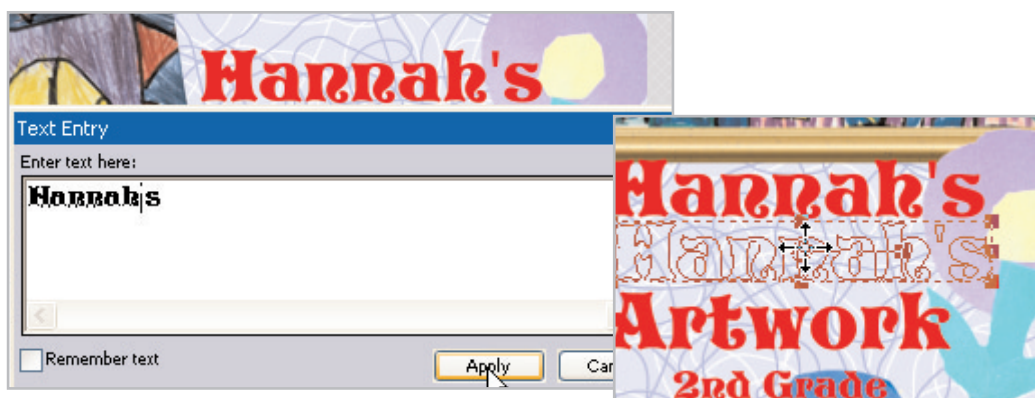
20. Here's the fun part, adding a title to your collage. Select the **Text** Tool from the Tools toolbar. On the Tool Options Palette at the top of the screen, choose the font and size you'd like for your title. Since the collage is pretty big, you'll want to choose a big size for your text. Make sure to choose **Vector** from the Create As drop-down. This will let you move your text easily.



21. On the Materials Palette in the right, choose the color you want for your text. The color in the bottom swatch will be the color of your text, if you want an outline for your letters, pick a color for the top swatch. We didn't want an outline, so we turned that swatch off.

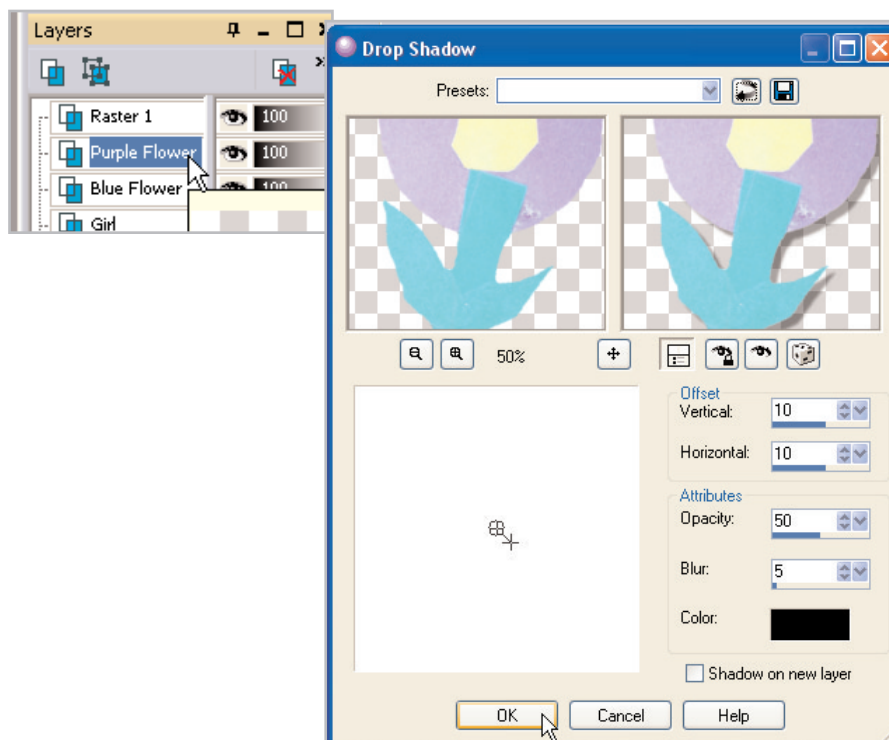


22. Now click your background, near where you want your text. Enter your text in the Text Entry box and click **Apply**. To move your text, click the center circle and drag it into place. For this example we added each line separately, giving us more freedom to move the text around.



Add Drop Shadows

23. Adding drop shadows is the final step in the process. By giving the different elements of your collage shadows, you give the illusion of depth. On the Layer Palette, select one of the layers you'd like to add a drop shadow to. For this example we're going to add a drop shadow to the Purple Flower layer. Choose **Effects > 3D Effects > Drop Shadow**. In the Drop Shadow dialog, play with the settings to get the drop shadow effect you like. You can see a preview of the shadow at the top of the dialog. Once you're happy with the shadow, click **OK**.



Next Steps:

Now that you see how fun and easy it is to create a collage of your child's artwork, you can create one for each month, grade, or season. With Paint Shop Pro Studio, there's no end to what you can do.

