

Sending an E-Card

With Paint Shop Photo Album you can share your photos over the Internet by e-mailing your family and friends an E-Card. It's so easy to drag your photos into these professionally-designed templates that you'll want to send E-Cards to everyone you know.



What you'll need:

- A collection of digital photos
- Jasc® Paint Shop™ Photo Album™ 5
- An Internet connection
- A default e-mail application that supports the MAPI Standard (such as AOL, Hotmail, Yahoo, Microsoft Outlook, or Outlook Express).


When you complete this tutorial you'll be able to:

- Select the E-Card project
- Select a card style
- Add a photo
- Enter a text message
- Save the E-Card
- Send the E-Card

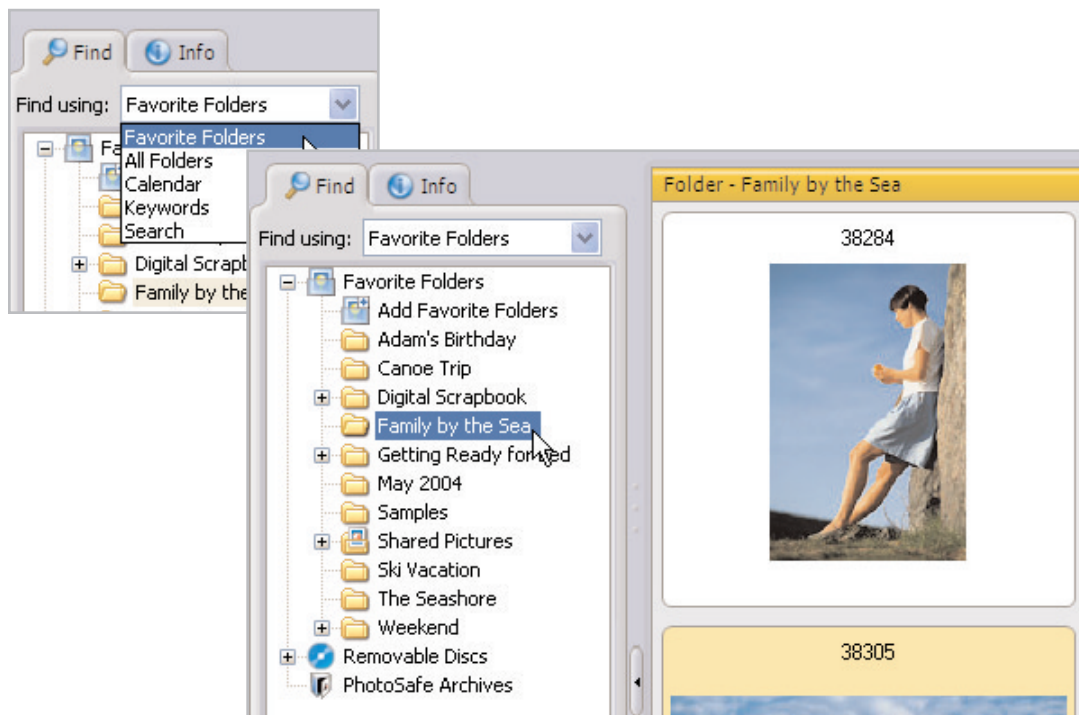
Jasc Software®

the power to create®
www.jasc.com

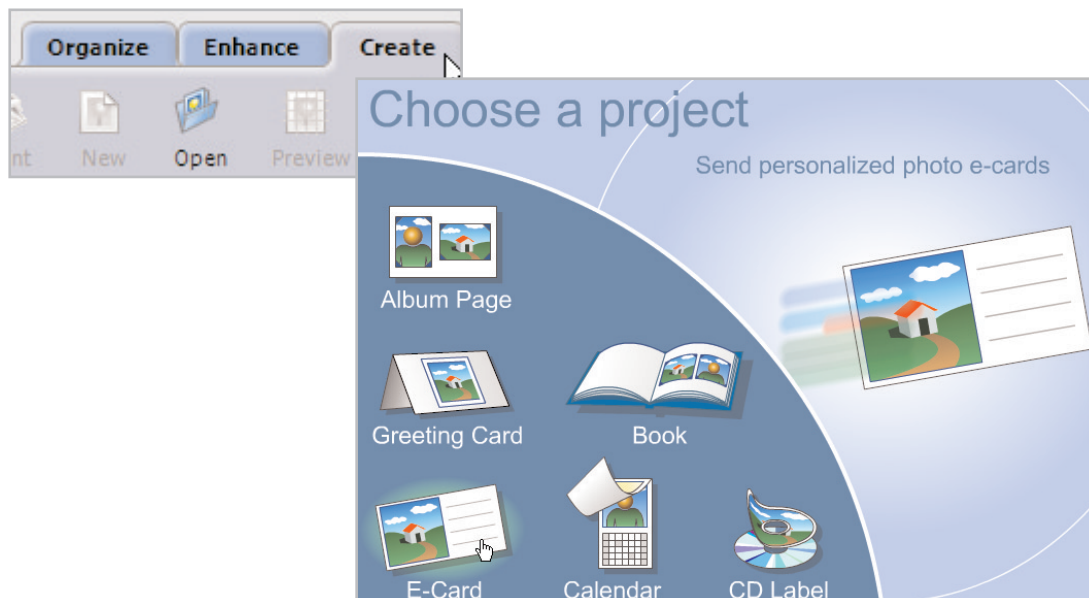
Select Your Project

1. Choose **Start > Programs > Jasc Software > Jasc Paint Shop Photo Album** or double click the Paint Shop Photo Album icon on your desktop to open Photo Album. 

2. Click the **Find** tab to open the folder containing the photos you want to use on your card. Once you find the photos you want to use, select the folder.



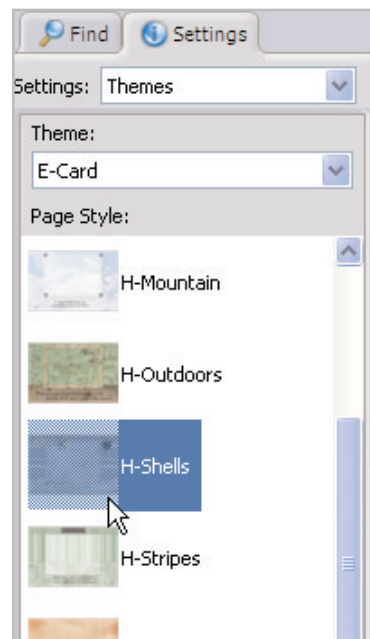
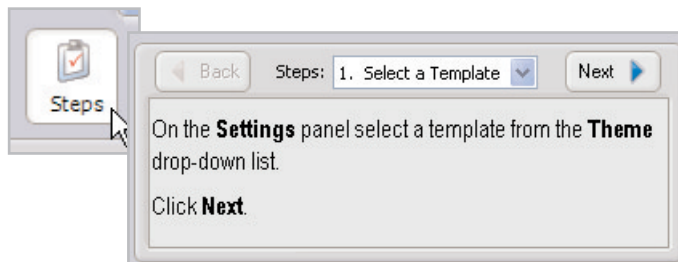
3. Now, click the **Create** tab to display the available projects. On the Project Window, click **E-Card**.



Choose Your Page Style

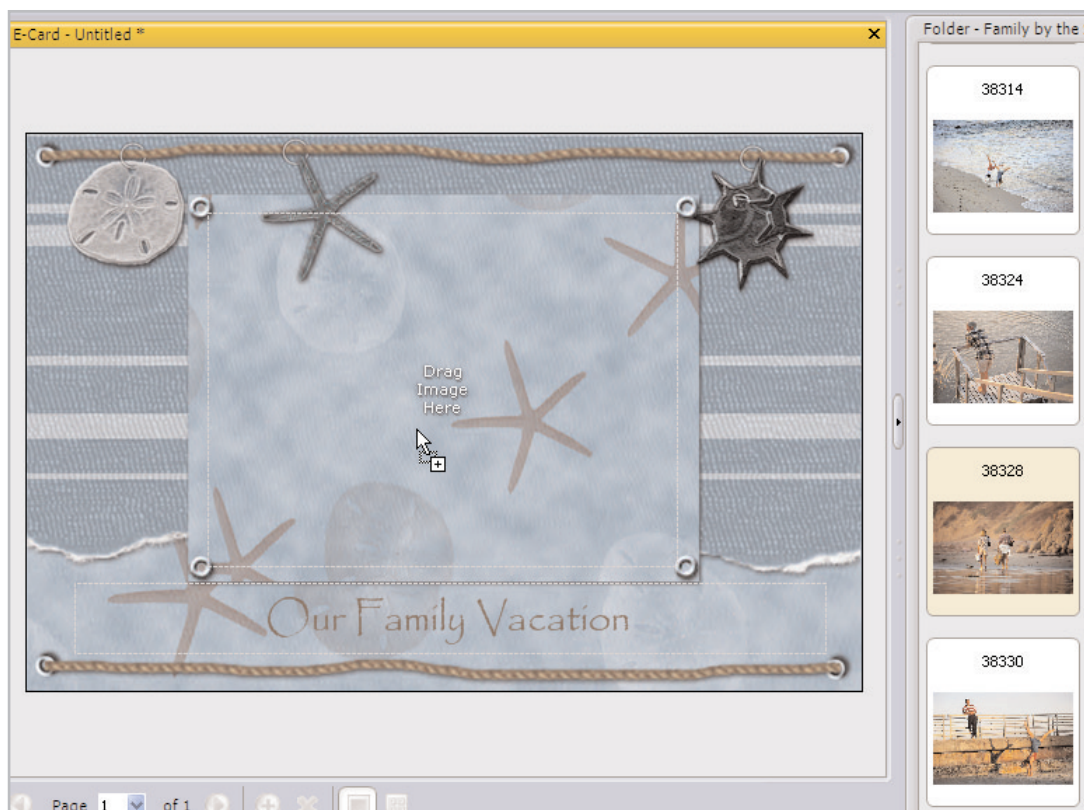
4. Paint Shop Photo Album offers you a variety of E-Card templates to choose from. In the Settings panel, select a style for your card from the Page Style section. For this example we're using **H-Shells**, but you can choose the style you like best.

Tip: You can use the Steps panel to view instructions about creating your Calendar, just click the **Steps** button on the toolbar to turn the Steps panel on or off.

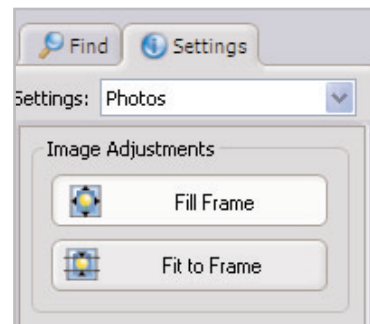


Add Photos

5. From the Image Strip, click and drag a photo into the cell of E-Card. If you make a mistake, you can remove a photo from a cell, by simply dragging another photo into the cell.



6. Use the Image Adjustments on the Settings panel to make sure the photo you've chosen fits just the way you'd like it to.
- Click **Fill Frame** to enlarge the photo to fill the cell. Some parts of the photo may be cropped.
 - Click **Fit to Frame** to resize the photo so that the entire photo appears in the cell. There may be some white space around the photo if it's a different size than the cell.

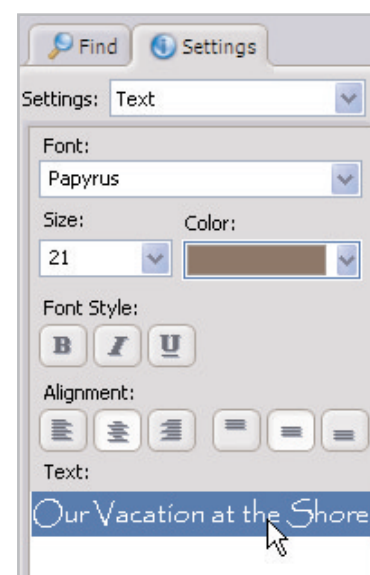


Add Text

7. Click a text cell on the E-Card to change the text. If you like, you can keep the text that's already there.

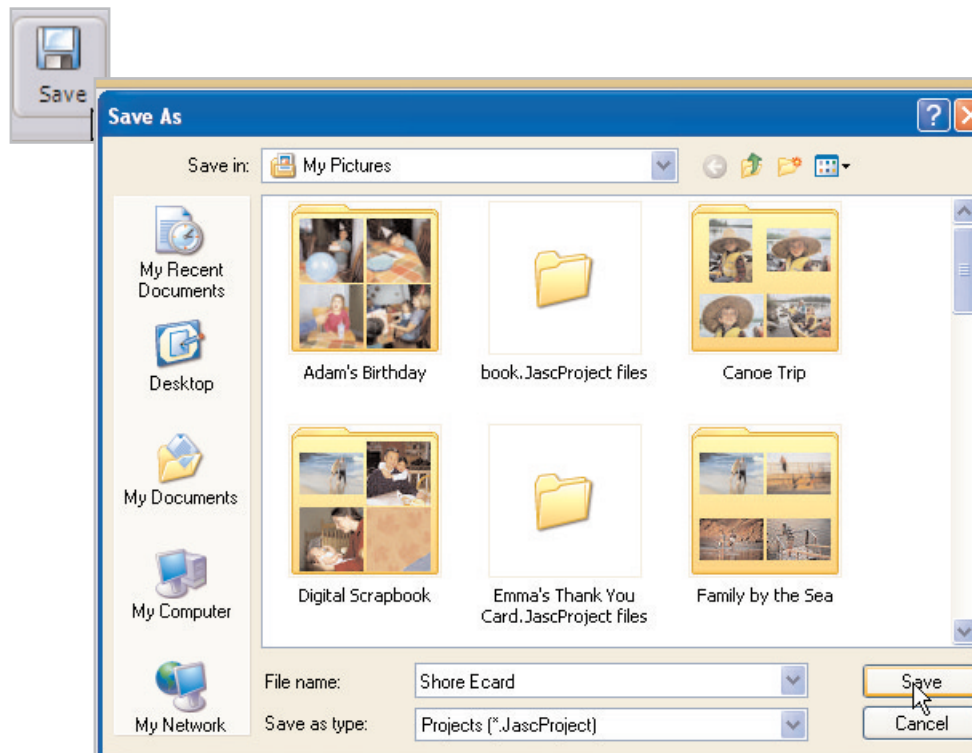


8. On the Settings Panel you can choose the Font, Size, Color, Style, and Alignment for your text. Once you adjust the settings to your liking, enter your text in the text field at the bottom of the Settings panel. The text you enter here will appear on your E-Card on the right.



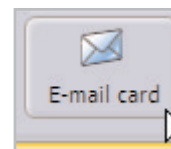
Save Your Work

9. To save your E-Card, click **Save**. Enter a name for your project in the File Name field. The E-Card will be saved in the Jasc Project File (.JascProject) format. When you're done, click **Save**.



Send Your Card

10. To send your card, click the **E-mail card** button.



11. Complete the To, Subject, and Message fields, and then click **Send**. The E-Card is sent as a JPEG attachment to the e-mail message.



Next Steps:

Now that you have experience using the Create tab, why don't you try making a greeting card, coffee table book, or calendar?

