

Crop & Frame Your Photos

With Paint Shop Pro Studio you can easily make the most of a good picture. By simply zooming in and drawing attention to an important detail, you can change the whole composition. Then, frame your newly created photo to add extra fun to share with others.



What you'll need:

- Jasc® Paint Shop™ Pro® Studio
- A digital photo (you can download our sample photo or follow along using your own)

When you complete this tutorial you'll be able to:

- Recognize the most important details in photos
- Change the composition of a photos after taking it
- Crop a digital photo
- Add a frame

Jasc Software®

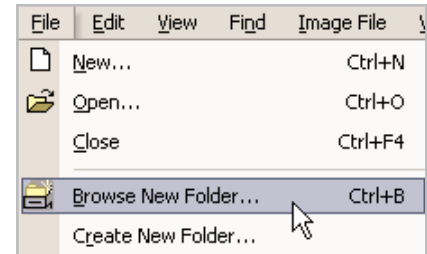
the power to create®
www.jasc.com

Open The Photo

1. Choose **Start > Programs > Jasc Software > Jasc Paint Shop Pro Studio** or double click the Paint Shop Pro Studio icon on your desktop.



2. Choose **File > Browse** to open the Paint Shop Pro Studio Browser. Use the Browser to navigate to your desktop or the folder where you stored the picture we will be working with.



3. Once you locate the photo, double-click it to open it in Paint Shop Pro Studio.

Crop The Photo

4. Select the **Crop** Tool from the Tools toolbar on the left side of the screen.



5. Before cropping, look at the photo and find the area of the photo you'd like to feature. Our goal is to bring out the subject of the photo and de-emphasize the background or other surrounding items.

6. Now start cropping. Select the area or person you want as your subject by clicking and dragging the cursor. You will see a box around the photo, which represents the crop lines. You can adjust the lines by clicking notches and sliding the lines either way. Once the crop lines look right, double-click inside the selected area.



7. If you do not like the area you've selected, press **Ctrl+Z** to undo the crop.

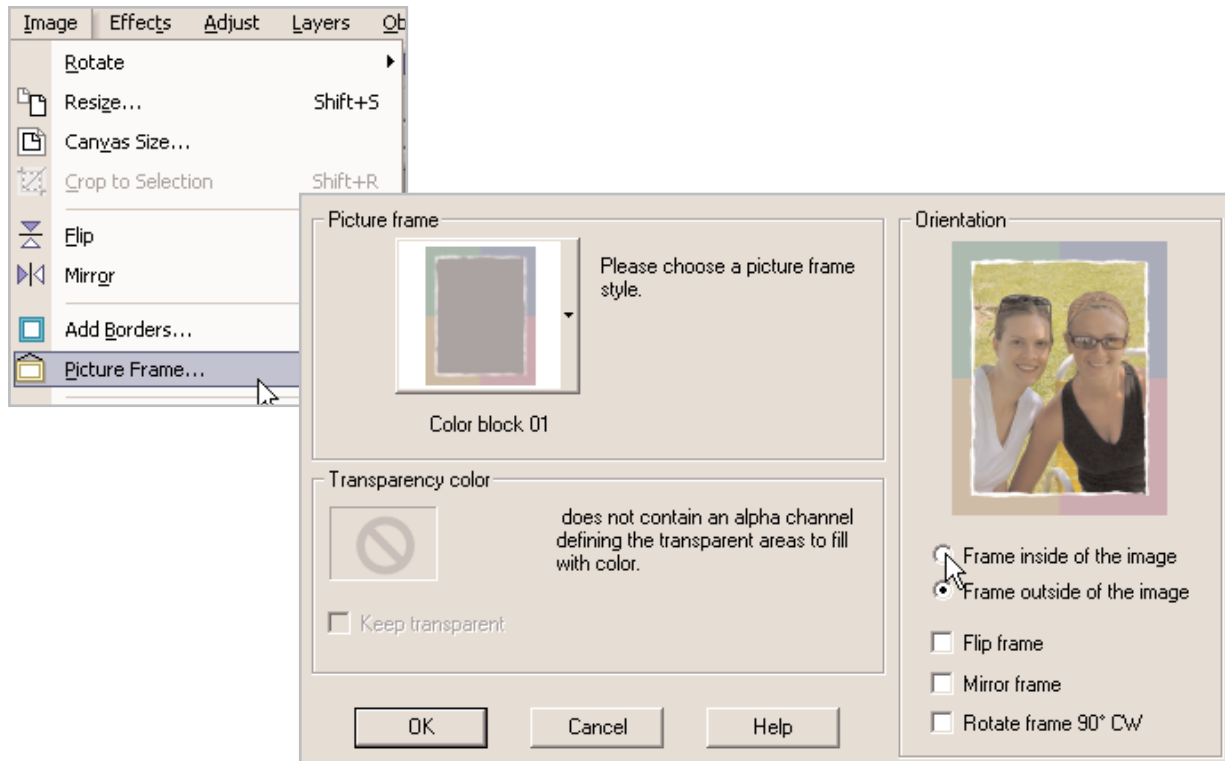


Fix And Frame The New Photo

8. Click the **One Step Photo Fix** button to create the best looking color and saturation.



9. Now choose **Image > Picture Frame**. You will see a sample of each frame design, making it easy for you to choose the frame you like the best. Select **Frame inside of the image** or **Frame outside the image** to experiment with what design will look the best with your new photo.

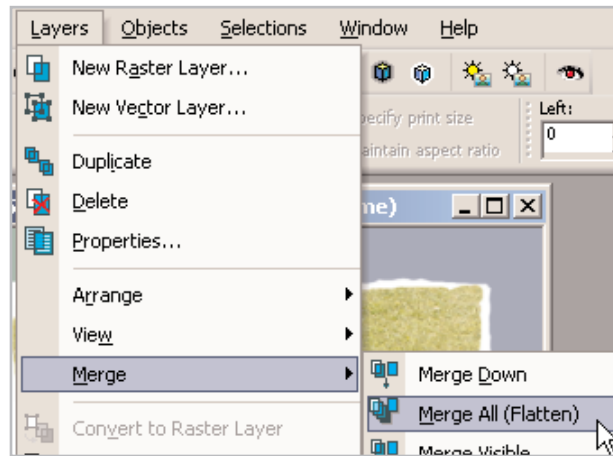


10. When you find the frame you like and are happy with its placement, click **OK**.



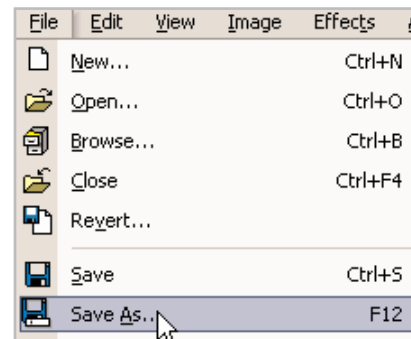
Make The Frame A Part Of The Photo

11. Once the frame is applied, Paint Shop Pro Studio will treat it as a new layer, just like placing an actual photo into a picture frame. To make the file easier to e-mail, merge the frame and photo layers into one layer.
12. Choose **Layers > Merge > Merge All (Flatten)**.



Save The New Photo

13. Choose **File > Save As** and select the folder where your photo will be saved. You can change the file name to "framed portrait" or the name of your choice. Once you're done, click **Save**.



Next Steps:

Now you're all ready to share your new photo! You can print the photo or e-mail it to your friends and family. With Paint Shop Pro Studio turning your photos into something special is a breeze.

