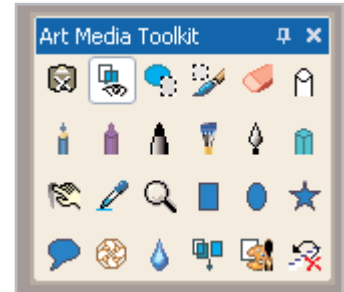


Create an Art Media Toolbar

One of the most exciting new features in Paint Shop Pro 9 is the introduction of the realistic art media tools. Now you can paint with a brush, sketch with a pencil or chalk, create subtle pastel portraits, use markers to ink cartoons and line art, even create impasto effects with a palette knife.

In this tutorial, we'll show you how to customize a toolbar to make all your art media projects a breeze.



What you'll need:

- Jasc® Paint Shop™ Pro® 9

When you complete this tutorial, you'll be able to:

- Customize a toolbar for art media projects

Jasc Software®

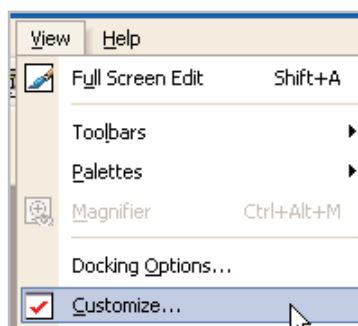
the power to create®
www.jasc.com

Create an Empty Toolbar

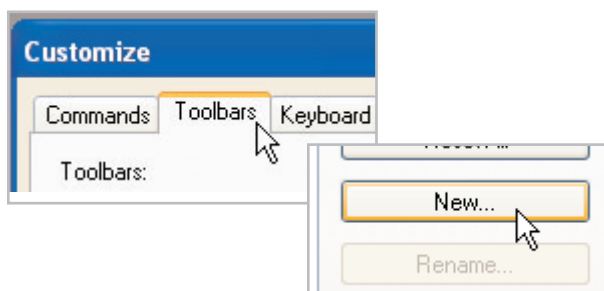
1. Choose **Start > Programs > Jasc Software > Jasc Paint Shop Pro 9** or double click the Paint Shop Pro 9 icon on your desktop to open Paint Shop Pro 9.



2. Choose **View > Customize**.



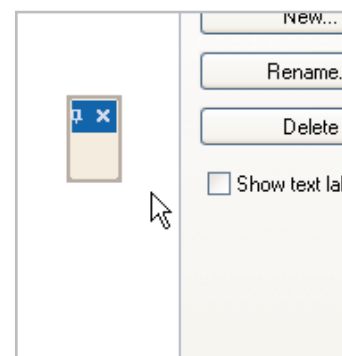
3. In the Customize dialog, click the **Toolbars** tab, and then click **New**.



4. On the Toolbar name dialog enter **"Art Media Toolkit"** and click **OK**.

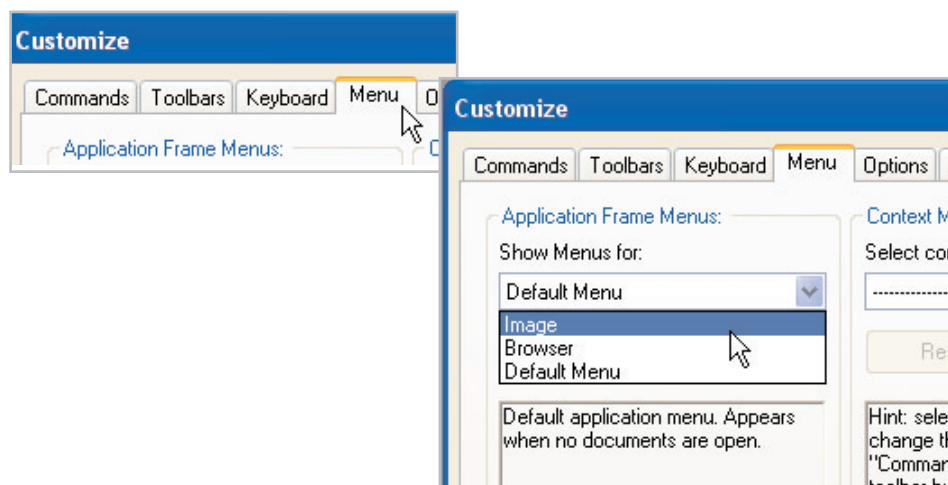


5. A small, empty toolbar will open in the middle of the workspace.



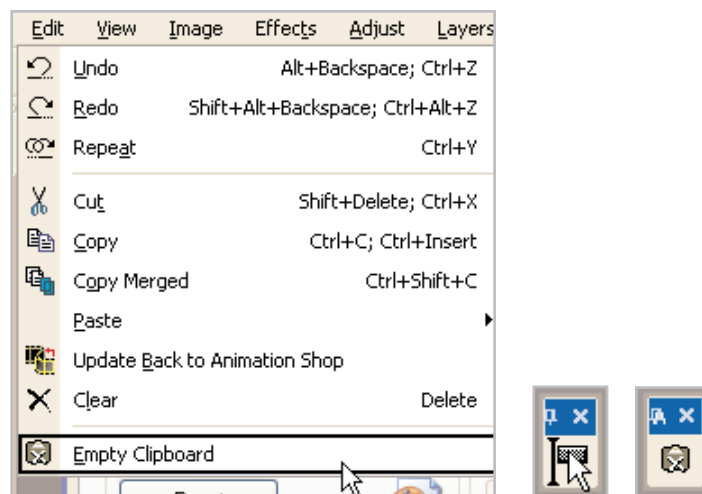
Add Commands

6. Now, click the **Menu** tab and in the Show Menus for drop-down, choose **Image**. This will make all the menus used when working with images available to us. (Note: you might have to move the customize dialog out of your way, so you can see your empty Art Media Toolkit toolbar.)

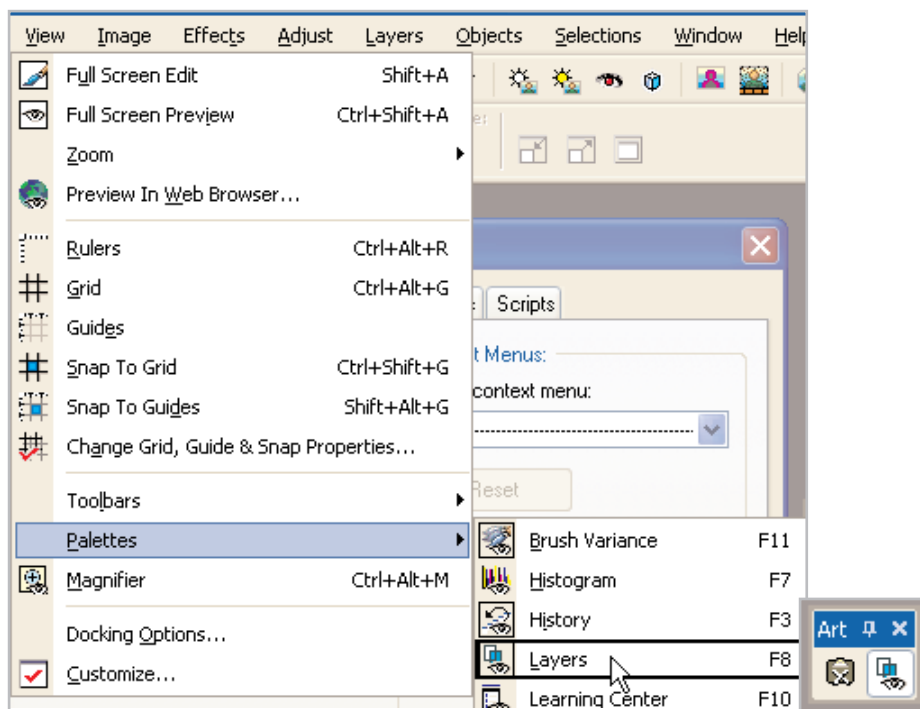


7. Here's where we add commands to the toolbar. When adding a command, make sure to press and hold **Ctrl** while dragging the command to your toolbar. This copies the command to the toolbar, instead of moving it, allowing you to keep the command in the original toolbar.

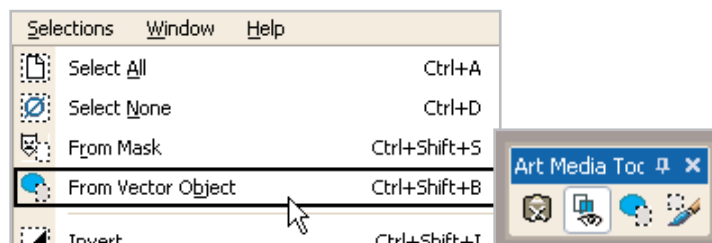
8. Choose **Edit > Empty Clipboard**. Now, press and hold **Ctrl** and then click and drag the Empty Clipboard command to your toolbar, and release the mouse. Once you release the mouse, you should see the Empty Clipboard icon on your toolbar.



9. Repeat Step 7, only this time choose **View > Palettes > Layers** and drag the Layers command to your clipboard (don't forget to press **Ctrl** before dragging the command to the toolbar).

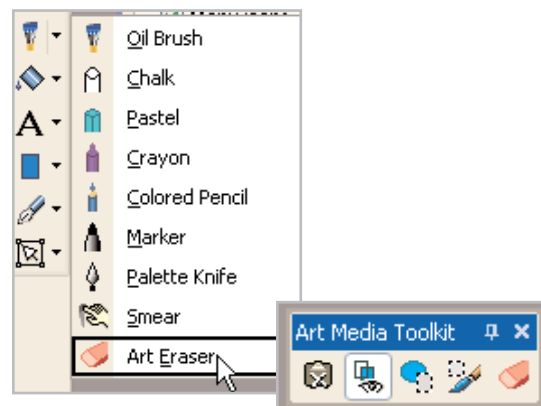


10. Now choose **Selections > From Vector Object** and drag it to your toolbar. Now choose **Selections > Edit Selections** and drag it to the toolbar.



Add Tools

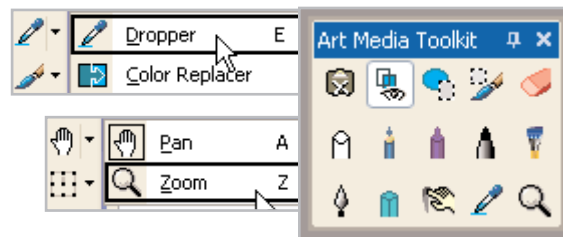
11. On the Tools toolbar, select the **Art Eraser** from the Oil Brush fly-out. Just like the commands, click **Ctrl** before dragging it to your toolbar.



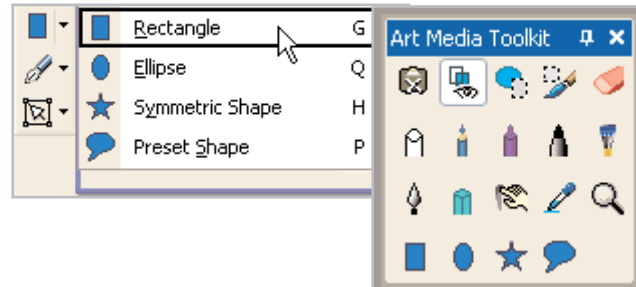
12. From that same fly-out in Step 10, we're going to add Chalk, Colored Pencil, Crayon, Marker, Oil Brush, Palette Knife, Pastel, and Smear to the toolbar.



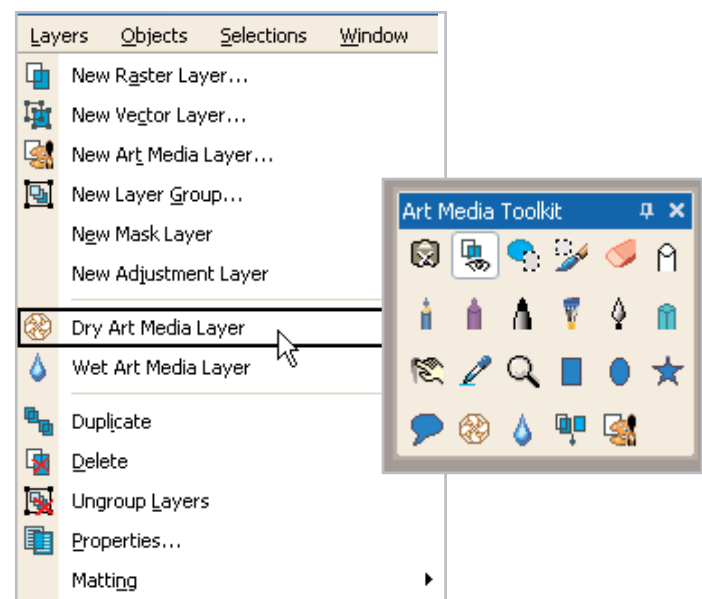
13. Now select the **Dropper** Tool and drag it to the your toolbar. Then, select the **Zoom** Tool and add it to your toolbar.



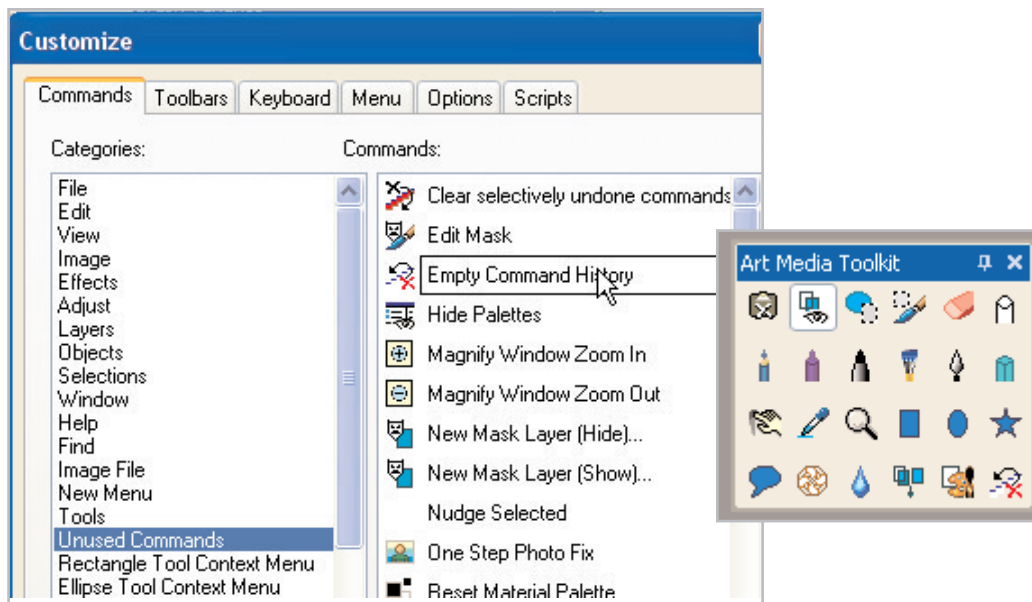
14. Select the **Preset Shapes** Tool and drag the Ellipse, Rectangle, Preset Shape, and Symmetric Shape Tools to your toolbar.



15. Choose **Layers > Dry Art Media Layer** and add it to your toolbar. From the Layers menu also add Wet Art Media Layer, Merge Down, and New Art Media Layer.



16. Now, click the **Commands** tab on the Customize dialog. Under Categories, select **Unused Commands**, and under Commands, click and drag **Empty Command History** to your toolbar.



17. When you're done adding commands, click **Close** on the Customize dialog. You should be left with your Art Media Kit Toolbar.

Next Steps:

Now that you know how to create a customized toolbar, you can create new toolbars for all your Paint Shop Pro projects.

