

Get to Know Paint Shop Pro: The Freehand Selection Tool

Selecting parts of photos for use in collages and other compositions is one of the most common tasks for digital photographers. Paint Shop Pro's Freehand Selection Tool gives you a wide variety of ways to select objects, each tailored to the object you want to select. With this tutorial, you'll be able to harness the power of this tool and create beautiful art from parts of your photos.



What you'll need:

- A digital photo
- Jasc® Paint Shop™ Pro®

Note: For this tutorial, we will use the flower.jpg and Flatiron building.jpg from the Paint Shop Pro Sample Images folder.

When you complete this tutorial you'll be able to:

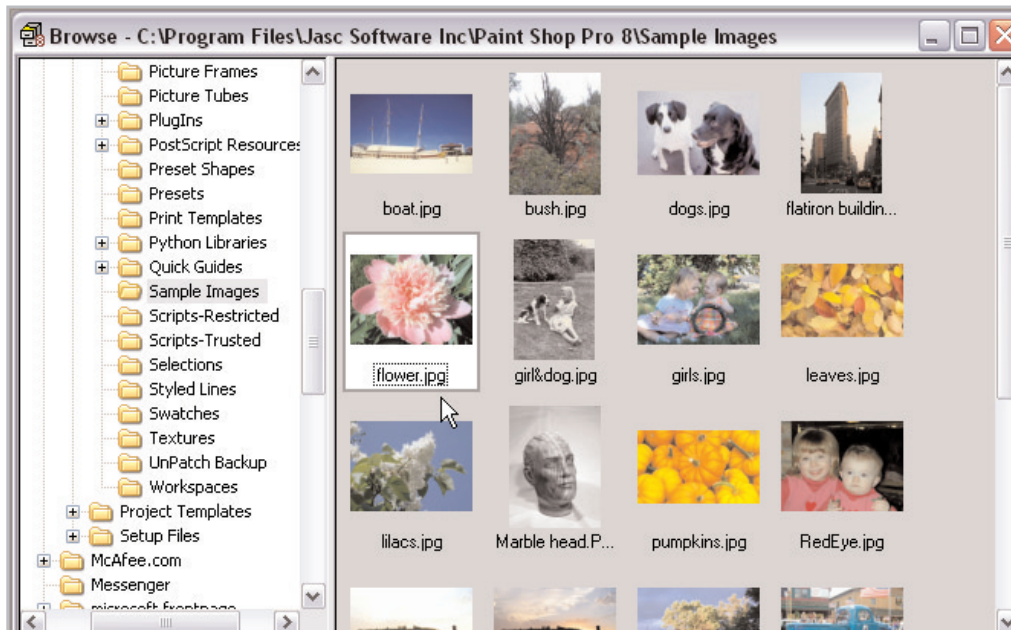
- Open two photos
- Set the Freehand Selection Tool's Freehand option
- Select an area of a photo using Freehand
- Choose a background color and crop to selection
- Save a new image
- Use the Point-to-Point selection method to select an area of another photo
- Copy and paste a selection as a new image
- Save the image

Jasc Software®

the power to create®
www.jasc.com

Open the Photos

1. If Paint Shop Pro 8 isn't already open on your computer, start it up by choosing **Start > Programs > Jasc Software > Jasc Paint Shop Pro** or double click the Paint Shop Pro 8 Icon on your desktop.
2. Choose **File > Browse**. Use the Image Browser to find flower.jpg and Flatiron building.jpg in your Sample Images folder. Double-click the thumbnails to open the file.



Set the Freehand Selection Tool in Freehand Mode

3. Select the **Freehand Selection** Tool. On the Tool Options palette set:

- Selection Type: **Freehand**
- Mode: **Replace**
- Feather: **25**
- Smoothing: **13**
- Mark the **Anti-alias** box



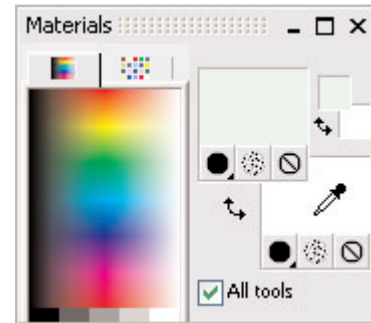
Select an Area Using Freehand Mode

4. Drag the cursor around the flower roughly around the inner petals, as if you were drawing.
5. Release the mouse button to close the selection. If you release too soon, start again.



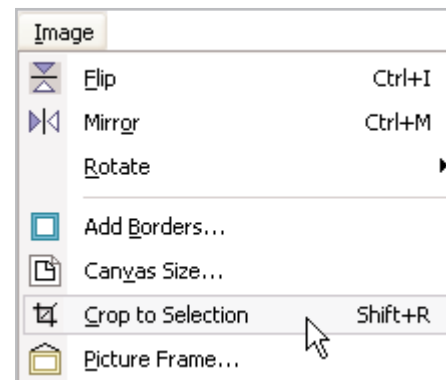
Choose a Background Color

6. On the Materials palette choose a Background Color that matches the color of the background on which the image is displayed, such as white. Make sure the Background/Fill Properties box is set to **Solid**.



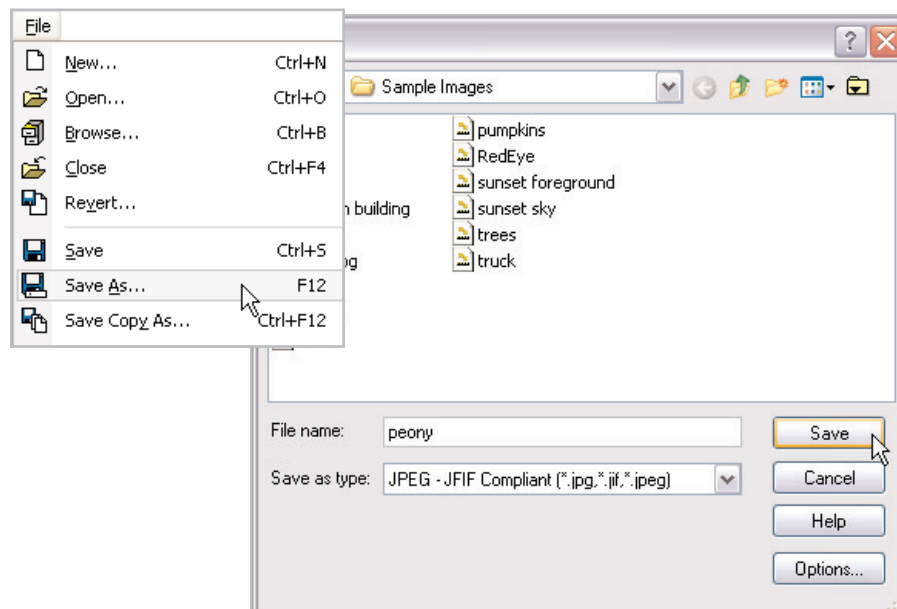
Crop to Selection

7. Choose **Image > Crop to Selection**.



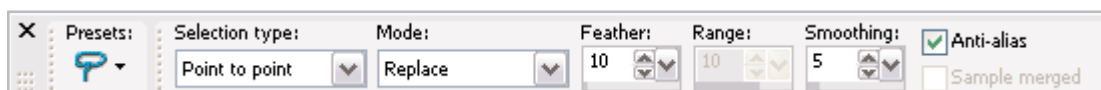
Save the File

8. Choose **File > Save As**. Find the folder where you want to save your file, type **peony** in the File name field, and click **Save**.



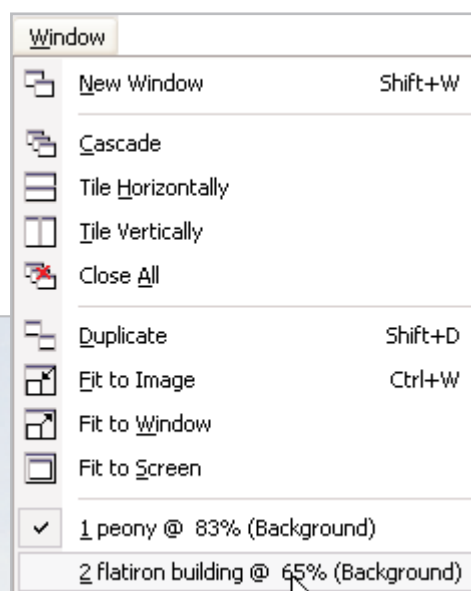
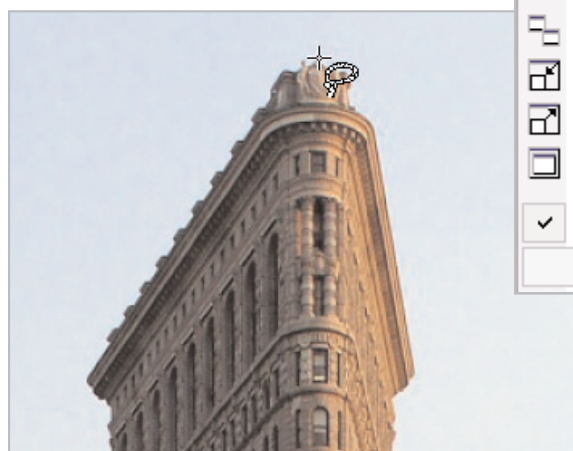
Use Point to Point Mode

9. On the Tool Options palette, set:
- Selection Type: **Point to Point**
 - Mode: **Replace** 10 in the Feather field
 - Smoothing: **5**
 - Mark the **Anti-alias** box

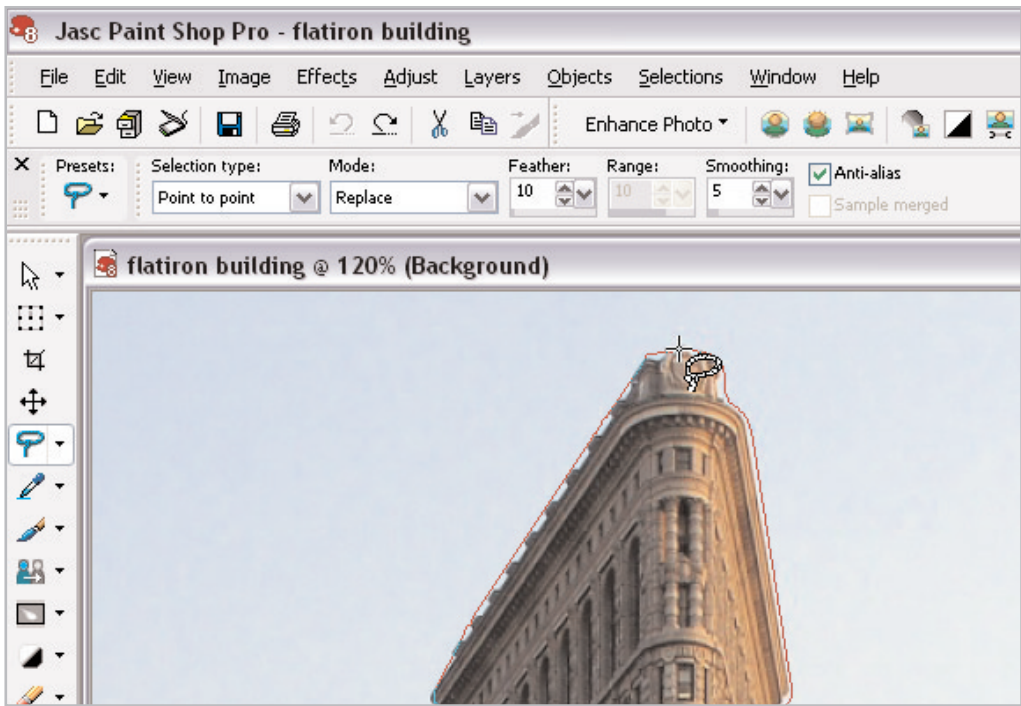


Select an Area

10. Choose **Window > flatiron building.jpg** to display the other photo.
11. Place the pointer on the top of the building and click to start the selection.

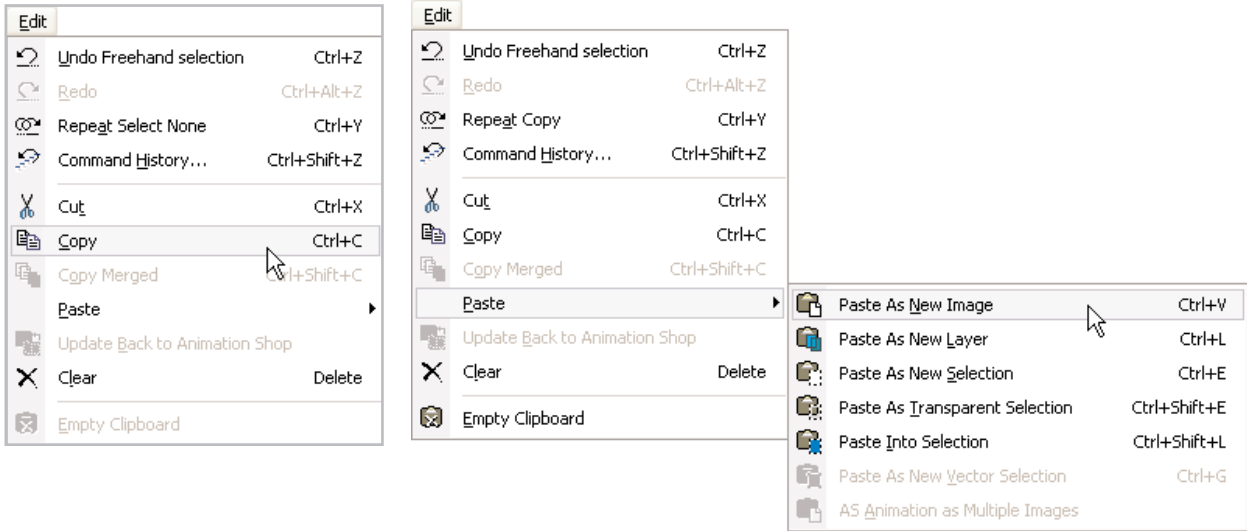


12. Move the pointer to the first corner of the top of the building and click again. Continue clicking and moving the pointer around the building's corners to include the tower part of the structure.

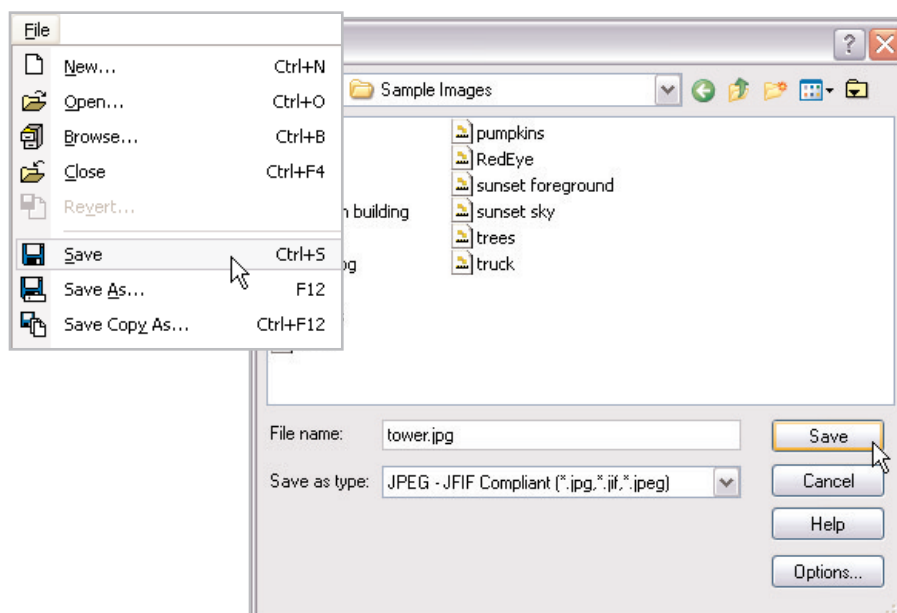


Copy the File to a New Image and Save

13. Choose **Edit > Copy**; and then choose **Edit > Paste > Paste as New Image**.



14. Choose **File > Save**. Find the folder where you want to save your file, type **tower** in the File name field, and click **Save**.



Next Steps:

Now that you can select objects with the Freehand Selection Tool, try learning the Edgesseeker option (see *Select Areas of Low Contrast*) and the Magic Wand Tool (see *Get to Know Paint Shop Pro: The Magic Wand Tool*). With these powerful tools at your disposal, you will be able to select any object from any photo.

Selecting them gives you the power to isolate areas for photo correction, create enchanting photo collages, and a wide variety of other graphics tasks like the pros.

