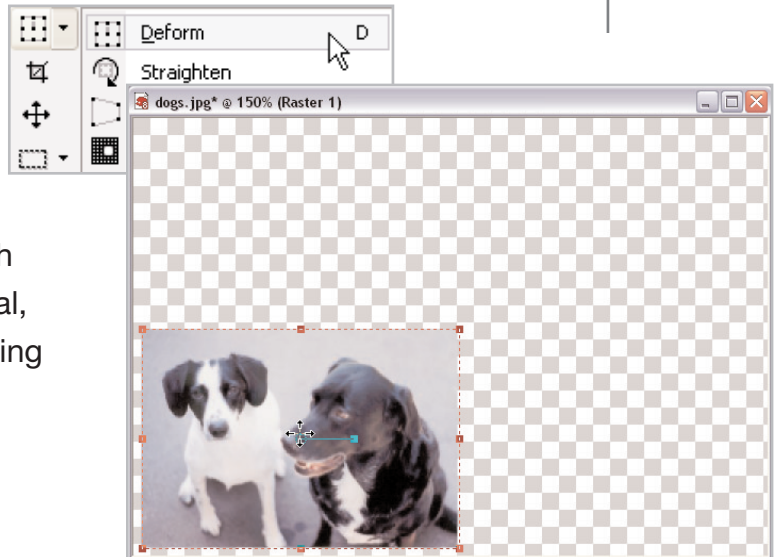


Get to Know Paint Shop Pro: the Deform Tool

There's no limit to what you can do with digital photos. Paint Shop Pro 8's Deform Tool lets you turn your photos into all kinds of artistic creations. You can quickly resize them, rotate them, and stretch them to simulate perspective. With the help of Paint Shop Pro and this tutorial, you can turn ordinary photos into interesting creations.



What you'll need:

- Jasc® Paint Shop™ Pro®
- The digital photo Dogs.jpg, located in your Sample Images folder

When you complete this tutorial you'll be able to:

- Open a photo
- Promote the background layer
- Set Deform Tool options
- Scale the background layer
- Duplicate raster layers
- Rename duplicated layers
- Shear duplicated layers

Jasc Software®

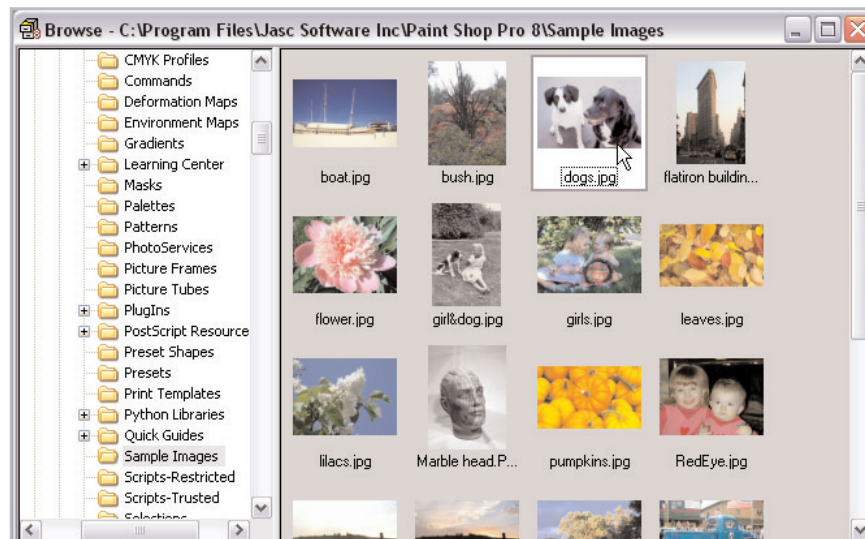
the power to create®
www.jasc.com

Set Up Your Workspace

1. If Paint Shop Pro 8 isn't already open on your computer, start it up by choosing **Start > Programs > Jasc Software > Jasc Paint Shop Pro** or double click the Paint Shop Pro 8 Icon on your desktop.

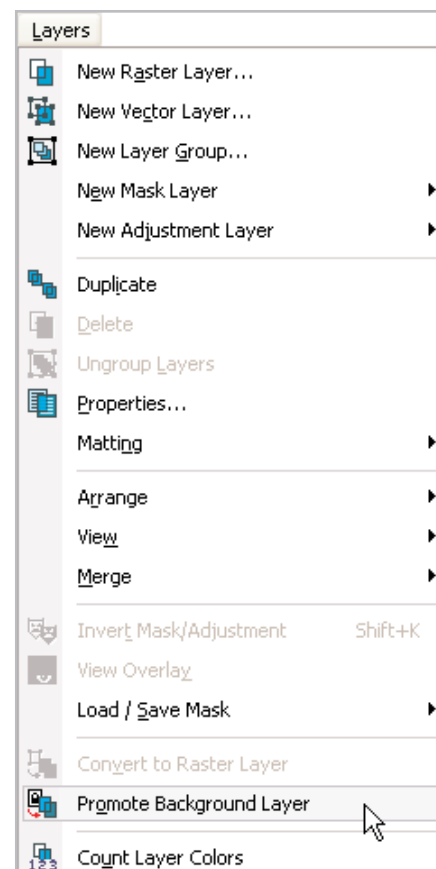


2. Choose **File > Browse**. Use the Image Browser to find dogs.jpg on your computer and double-click to open the file.




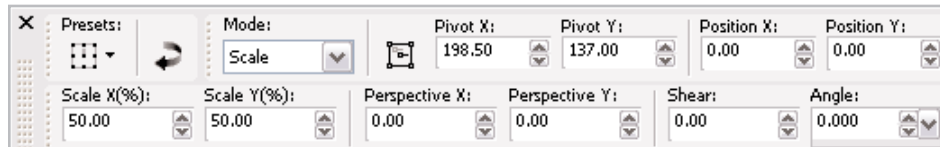
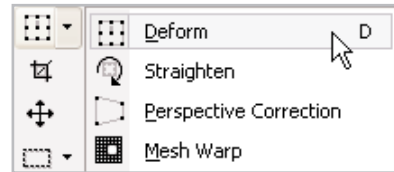
3. Choose **Layers > Promote Background Layer**. Notice in the Layer palette that Background has changed to Raster 1.

Note: The Deform Tool only works on raster layers.

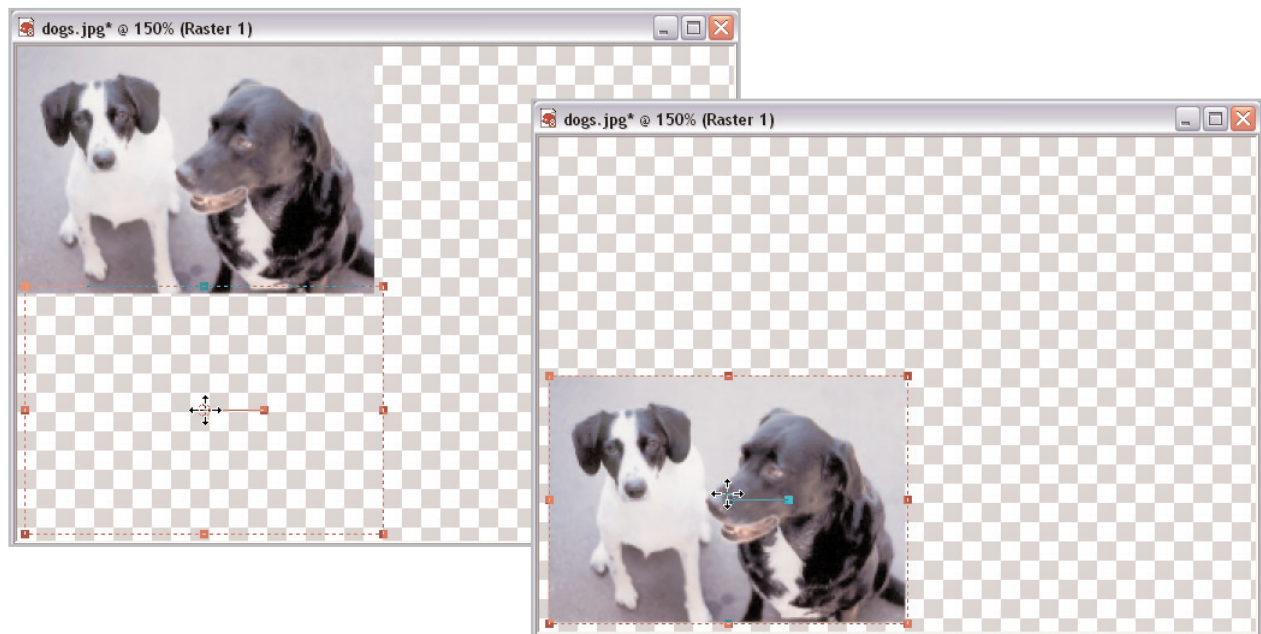


4. Select the Deform tool in Deform Tool fly-out on the Tools toolbar. In the Tool Options palette:

- Set Mode to Scale
- Set Scale X (%) to 50
- Set Scale Y (%) to 50
- Click the Center Pivot button 

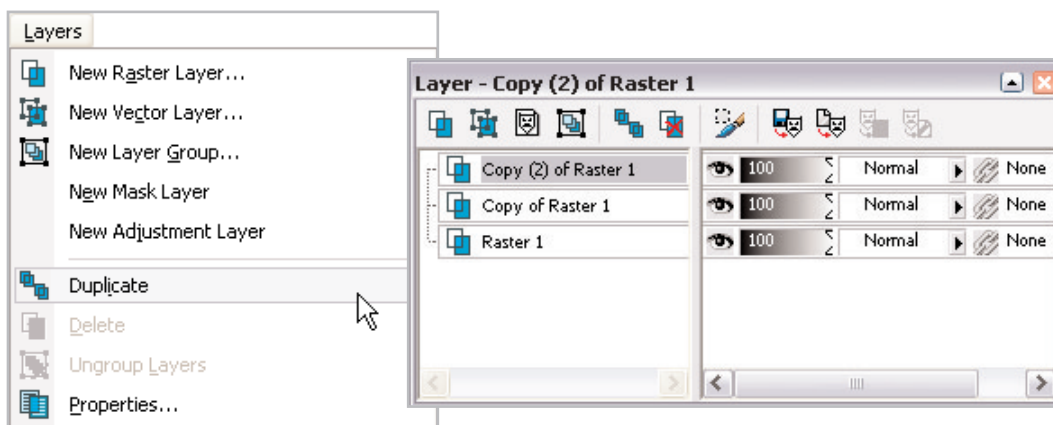


5. Click the center of the photo and drag it to the center of the canvas.

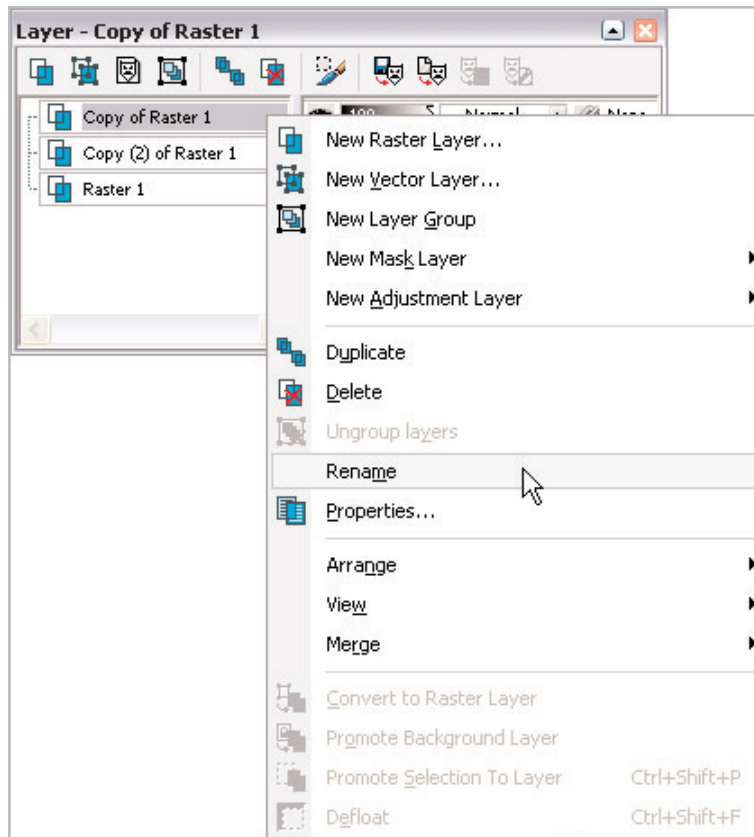


Duplicate and Rename Layers

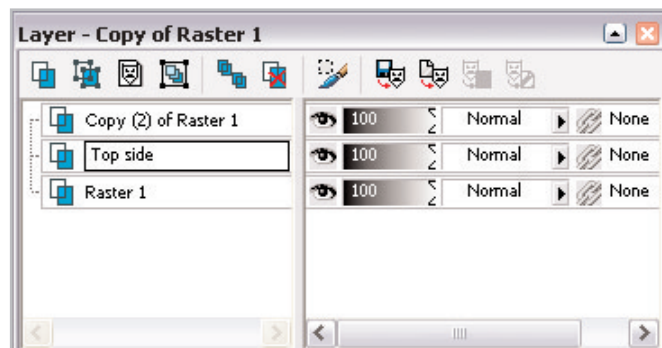
6. Choose **Layers > Duplicate** to create a copy of Raster 1. Repeat this step to create a second copy of Raster 1.



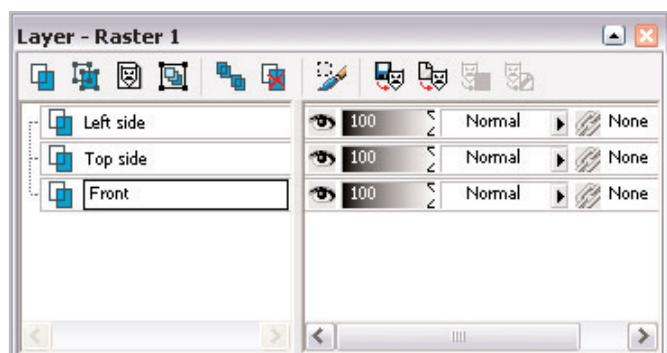
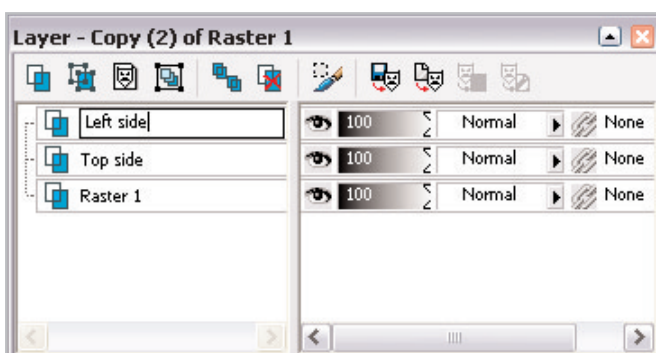
7. On the Layer palette, right-click **Copy of Raster 1** and choose **Rename** from the pop-up menu.



8. When **Copy of Raster 1** is selected, type **Top side** and press **Enter**.

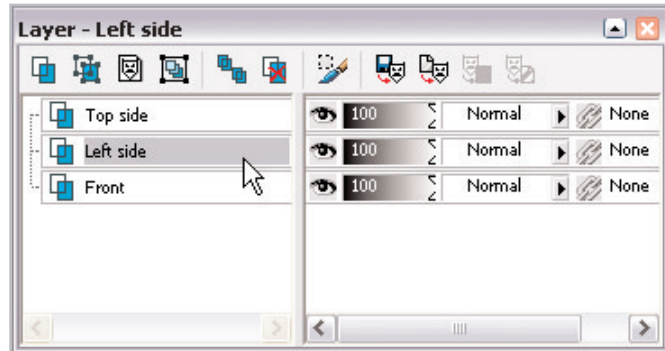


9. Rename the other layers:
- Rename Copy (2) of Raster 1: **Left side**
 - Rename Raster 1: **Front**

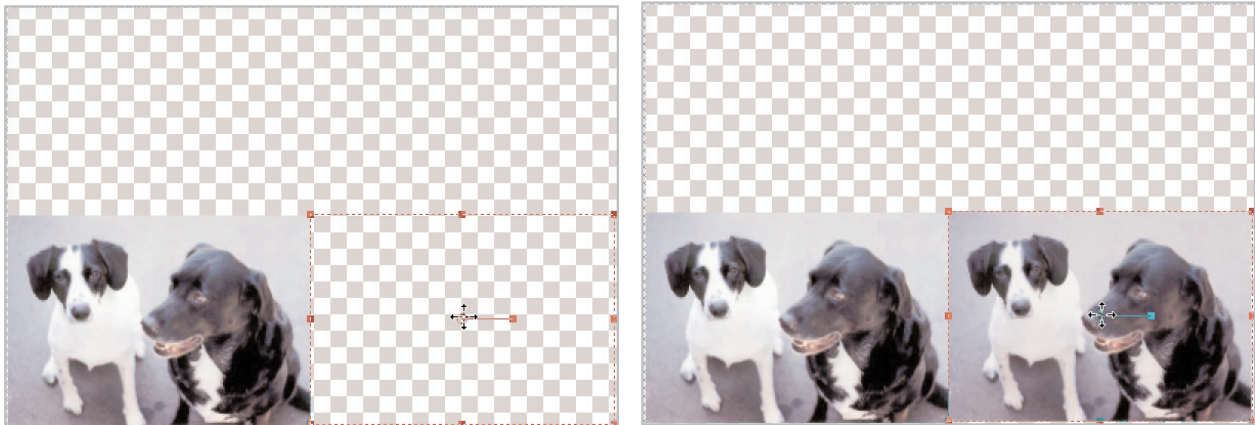


Shear Duplicated Layers

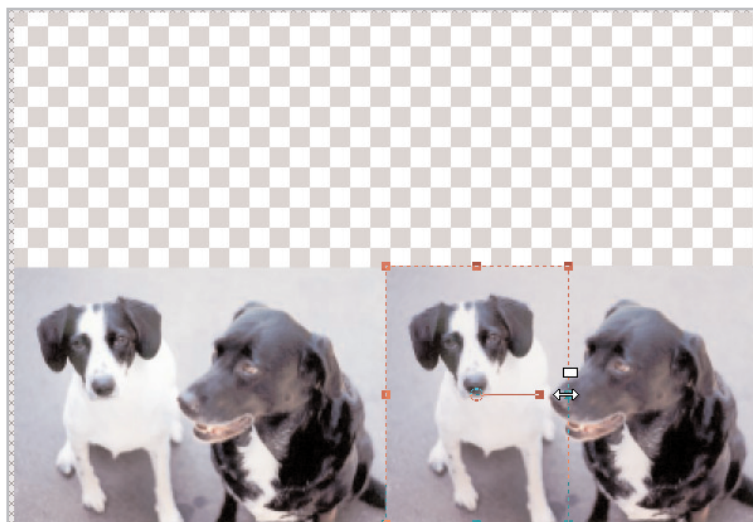
10. On the Layer palette, select **Left side**.



11. Click the center of the Left side layer and drag it to the right side of the Front layer. Be sure to line it up at the top and bottom.

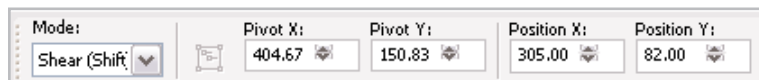


12. Click the middle handle on the right side of the image layer and drag it to the middle of the layer to rescale the width to about half.

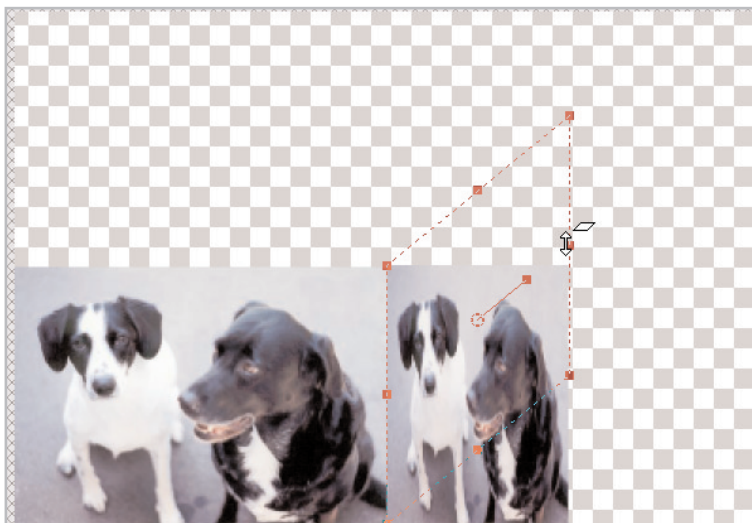


13. In the Tool Options palette:

- Set Mode to Shear

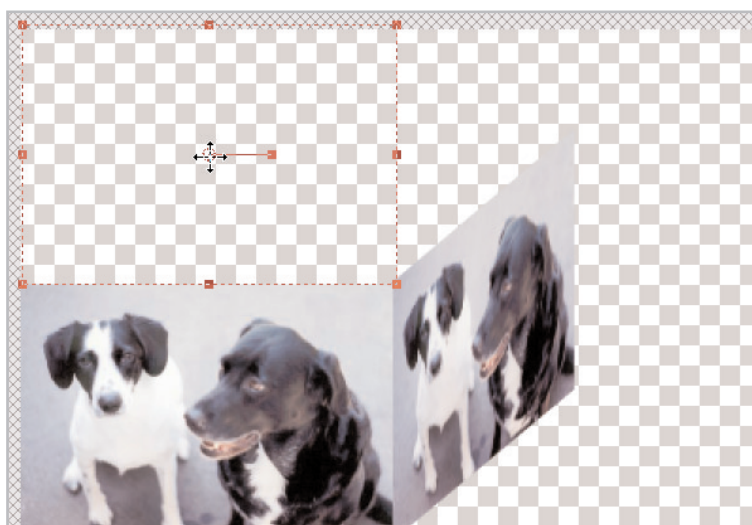


14. Click the right side handle and drag the right side of the layer toward the top of the canvas so that the shear is at about a 45-degree angle.



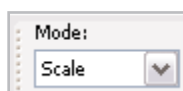
15. On the Layers palette, select **Top side**.

16. Click the center of the Top side layer and drag it to the top of the Front layer. Be sure to line it up on the left and right.

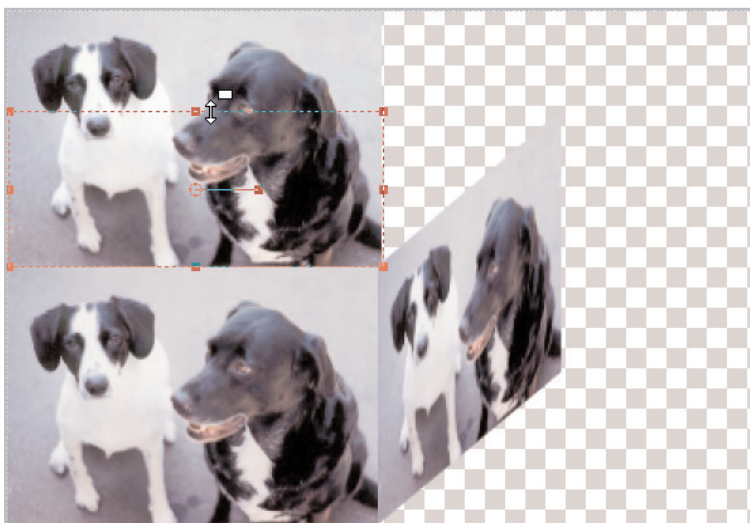


17. On the Tool Options palette:

- Set Mode to Scale



18. Click the middle handle on the top side of the image layer and drag it down to the middle of the layer to rescale the width to about half.



19. On the Tool Options palette:
■ Set Mode to Shear

Tip: You can also press the Shift key while dragging to use the Shear effect.

20. Click the center top handle and drag the top edge of the layer to the right so that the right edge lines up with the top edge of the Left side layer.

Next Steps:

Scaling and shearing are only two options of the Deform Tool. See the following tutorials for other Deform Tool options: *Distorting the Shape of Photos*, *Straighten Slanted Images*, *Fix Distorted Perspective*, and *Get to Know Paint Shop Pro: the Mesh Warp Tool*.

