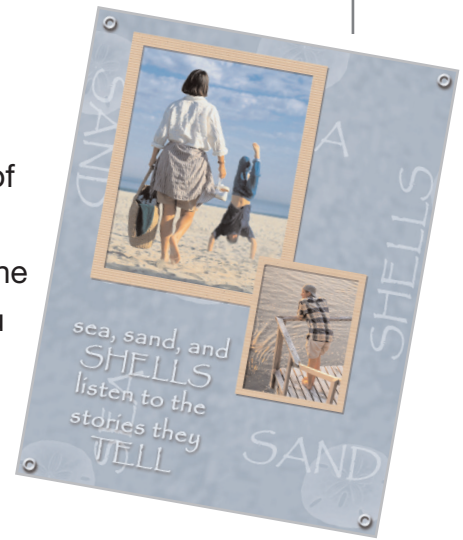


Arrange Embellishments within a Scrapbook Layout

Using the Paint Shop Xtras – Scrapbooking Edition series of CDs you can quickly and easily make your own scrapbook album pages by dragging and dropping your photos into one of the hundreds of layouts. With this tutorial we'll teach you how to move the elements of your layout to fit the design you had in mind.



What you'll need:

- Two digital photos
- Jasc® Paint Shop™ Pro®
- FREE sample scrapbook page or page created in the *Insert Photos into Scrapbooking Templates* tutorial.

When you complete this tutorial you'll be able to:

- Move photos
- Move embellishments

The Digital Scrapbooking Basics series includes:

- Tutorial 1: Insert Photos into Scrapbooking Templates
- Tutorial 2: Organize Your Scrapbook Layout
- Tutorial 3: Reposition Photo Layers in a Scrapbook Layout
- Tutorial 4: Resize Photos within a Scrapbook Layout
- Tutorial 5: Rotate Photos within a Scrapbook Layout
- Tutorial 6: Arrange Embellishments within a Scrapbook Layout
- Tutorial 7: Add Captions and Journaling to a Scrapbooking Template
- Tutorial 8: Change Background and Layer Colors in a Scrapbooking Template
- Tutorial 9: Add Drop Shadows to Text or Embellishments in a Scrapbook Layout
- Tutorial 10: Resize a Scrapbook Template to Fit Your Album

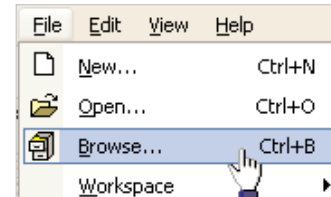
Open the Template

1. Choose **Start > Programs > Jasc Software > Jasc Paint Shop Pro** or double click the Paint Shop Pro icon on your desktop.

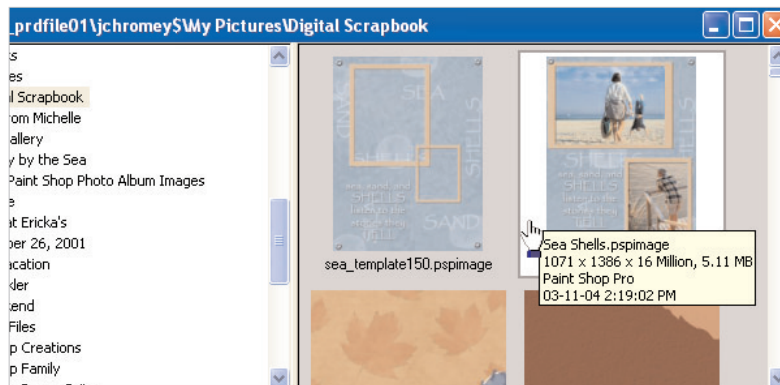


Note: Once you have downloaded the scrapbook page from the Jasc.com Learning Center, make sure to unzip the file and save the template to your hard drive.

2. Choose **File > Browse**, to open the Paint Shop Pro Browser. Use the Browser to navigate to your desktop, or the folder where you stored your scrapbooking template.



3. Once you locate the template, double-click it to open in Paint Shop Pro.



4. Add photos to the template, by following the instructions in *Insert Photos into Scrapbooking Templates*.

Reposition Photos

5. Make sure your photos are in the correct position, lying below the photo mats. If you need more help on arranging layer please read *Reposition Photo Layers in a Scrapbook Layout*.

Note: Make sure you've renamed your layers to something you can easily recognize and that your layer palette is displayed. You can learn more about this by reading the *Organize Your Scrapbook Layout* tutorial.

Move Your Photo

6. Select the **Move** Tool. Click your photo and drag it around your layout until it's in the position you like the best. In this example, we're moving our main photo so it rests between the two eyelets at the top of the layout.



Move Embellishments

7. Since you moved the photo, you'll want to move the photo mat with it. With the Move Tool, click the Large Cardboard Mat, and drag it into place. That's all there is to it. Repeat this process for each photo and embellishment in your layout. You can move them around freely until you find the arrangement you like best.



Be Creative

8. Now that you know how to arrange the photos and embellishments in your layout, you should freely experiment. In this example we resized the Large Cardboard Mat (using the instructions in *Resize Photo within a Scrapbook Layout*) and rotate the mat (using the lessons learned in *Rotate Photos within a Scrapbook Layout*). Then we moved the mat so it brought extra attention to the couple on the beach.



Next Steps:

For more in-depth information on creating a digital scrapbook, you can read *Capture Memories with Digital Scrapbook Pages* or read the rest of the tutorials in the Digital Scrapbooking Basics series.

