

Reposition Photo Layers in a Scrapbook Layout

Using the Paint Shop Xtras – Scrapbooking Edition series of CDs you can quickly and easily make your own scrapbook album pages by dragging and dropping your photos into one of the hundreds of layouts. Once you drop your photos into the layout though, you may need to reposition some of the layers so everything stacks up the way you want. With this tutorial we'll teach you how to adjust the layers in your layout.

What you'll need:

- Two digital photos
- Jasc® Paint Shop™ Pro®
- FREE sample scrapbook page or page created in the *Insert Photos into Scrapbooking Templates* tutorial.

When you complete this tutorial you'll be able to:

- Reposition layers on the Layer Palette

The Digital Scrapbooking Basics series includes:

- Tutorial 1: Insert Photos into Scrapbooking Templates
- Tutorial 2: Organize Your Scrapbook Layout
- Tutorial 3: Reposition Photo Layers in a Scrapbook Layout
- Tutorial 4: Resize Photos within a Scrapbook Layout
- Tutorial 5: Rotate Photos within a Scrapbook Layout
- Tutorial 6: Arrange Embellishments within a Scrapbook Layout
- Tutorial 7: Add Captions and Journaling to a Scrapbooking Template
- Tutorial 8: Change Background and Layer Colors in a Scrapbooking Template
- Tutorial 9: Add Drop Shadows to Text or Embellishments in a Scrapbook Layout
- Tutorial 10: Resize a Scrapbook Template to Fit Your Album



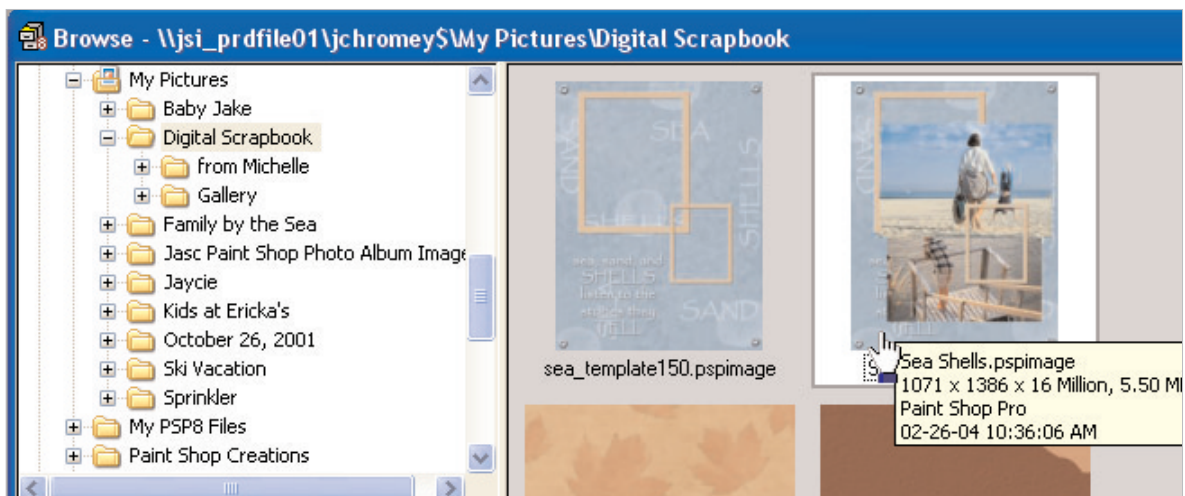
Open the Template & Add Photos

1. Choose **Start > Programs > Jasc Software > Jasc Paint Shop Pro** or double click the Paint Shop Pro icon on your desktop.



Note: Once you have downloaded the scrapbook page from the Jasc.com Learning Center, make sure to unzip the file and save the template to your hard drive.

2. Choose **File > Browse**, to open the Paint Shop Pro Browser. Use the Browser to navigate to your desktop, or the folder where you stored your scrapbooking template.

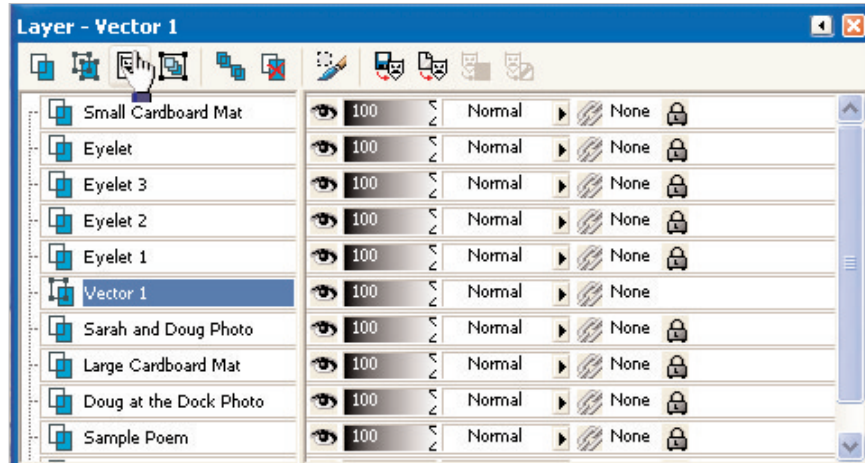


3. Once you locate the template, double-click it to open in Paint Shop Pro.
4. If you haven't already added photos to the template, do so now following the instructions in *Insert Photos into Scrapbooking Templates*.



Open the Layer Palette & Rename Layers

5. If the Layer palette isn't displayed, choose **View > Palettes > Layers** to display it. You can learn more about undocking your Layer palette and renaming layers in the *Organize Your Scrapbook Layout* tutorial.



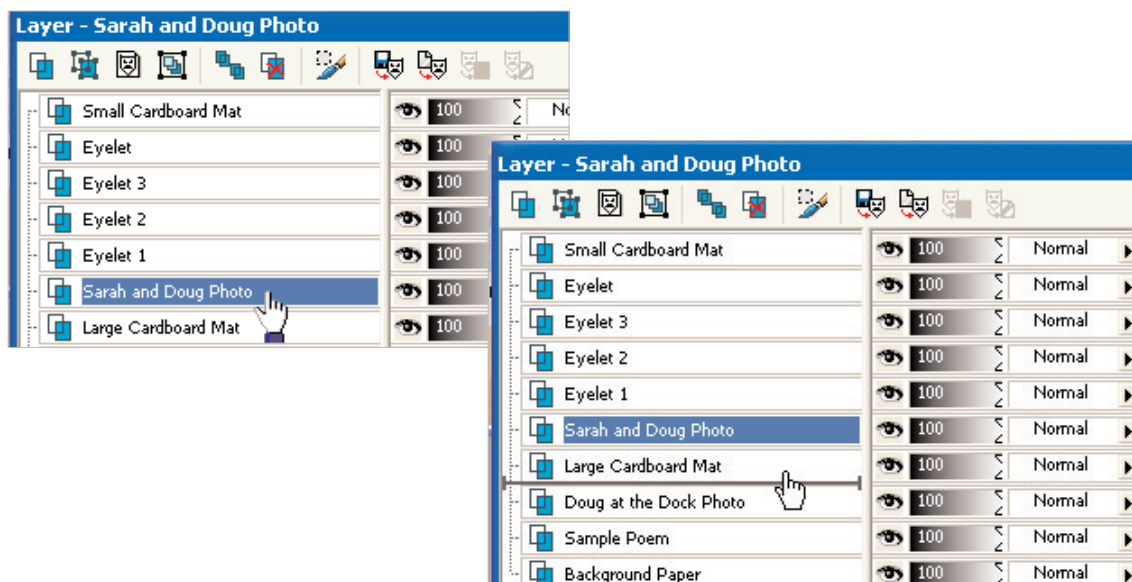
Note: These next steps will assume you've added photos to your template and renamed your layers to something you can easily recognize.

Reposition Layers

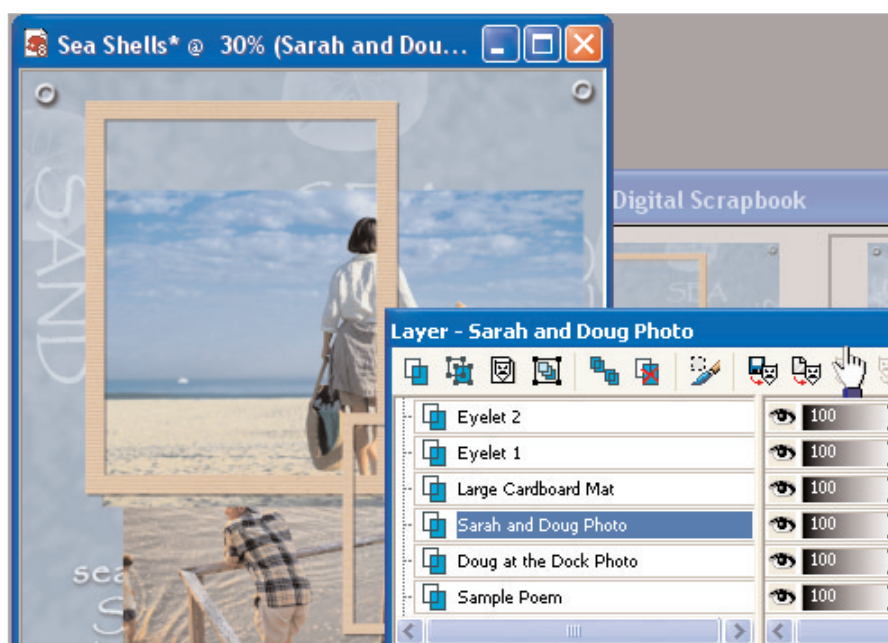
6. Sometimes when you add photos to a template, they don't fall where you want. Photos may end up above your photo mats, embellishments, or above the wrong photo.



7. On the layer palette, click the layer you want to move to select it and then drag the layer up or down the layer list to the position you want. In this example we want the Sarah and Doug Photo layer to fall below the Large Cardboard Mat.



8. Once you move the layer up or down, on your image you should see that the photo has been repositioned. In our example the photo now lies below the mat.



Next Steps:

Now that you know how easy it is to add your own photos to a scrapbook template, you can use the **Paint Shop Xtras – Scrapbooking Edition** CDs to create a scrapbook filled with your photos.

For more in-depth information on creating a digital scrapbook, you can read *Capture Memories with Digital Scrapbook Pages* or read through tutorial #4 in the Digital Scrapbooking Basics series, *Resize Photos within a Scrapbook Layout*.

