

Create Unique Web Buttons

With Paint Shop Pro 8's selection of more than 75 ready-made buttons makes it a snap to create a Web site with style and panache. Using the Preset Shapes Tool, you can choose your favorite button and modify it to suit your site's design. Here we'll teach you the quickest and easiest way to create your own custom Web buttons.

What you'll need:

- Jasc® Paint Shop™ Pro®

When you complete this tutorial you'll be able to:

- Create a new image
- Draw a shape with the Preset Shapes Tool
- Change the color of a shape
- Add and position text on a shape
- Add a drop shadow to text
- Crop an image

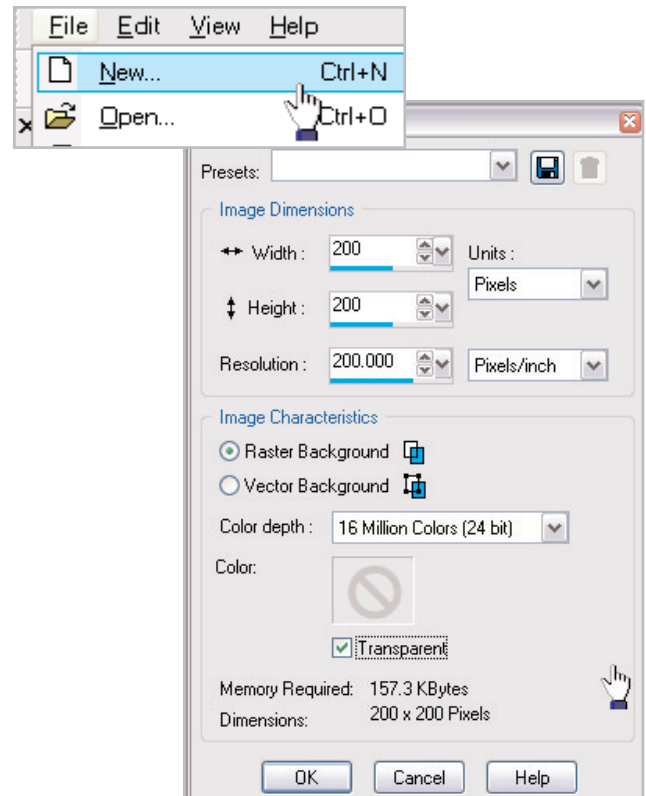


Create a New Image

1. If Paint Shop Pro 8 isn't already open on your computer, start it up by choosing **Start > Programs > Jasc Software > Jasc Paint Shop Pro** or double click the Paint Shop Pro 8 Icon on your desktop.



2. Choose **File > New**. In the New Image dialog set:
 - Width: **200 pixels**
 - Height: **200 pixels**
 - Mark the **Transparent** box
 Click **OK**.

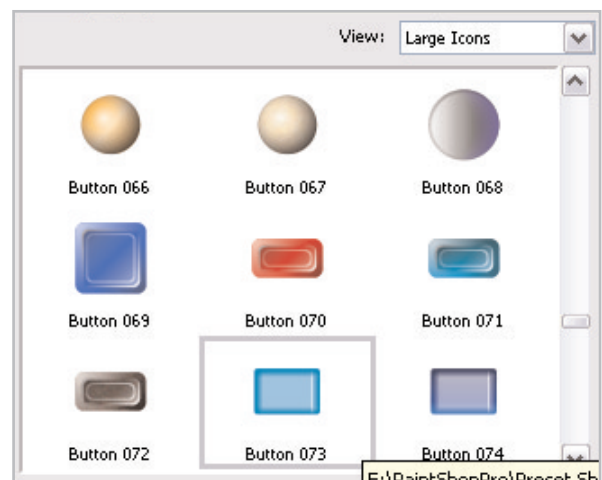


Draw the Shape

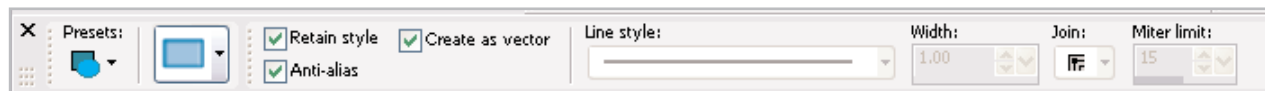
3. Select the **Preset Shape** Tool from the Tools toolbar.



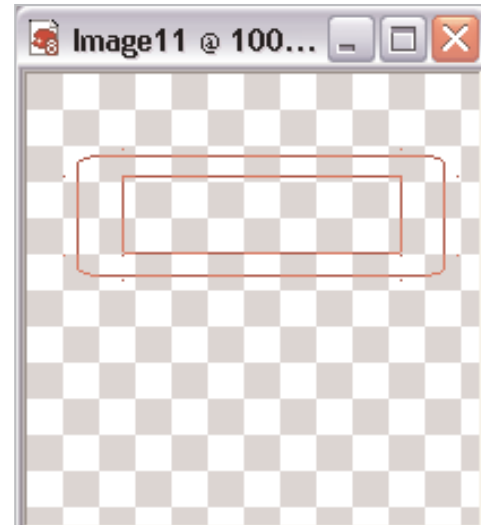
4. On the Tool Options palette, click the arrow next to the shapes list and choose **Button 073**.



5. Make sure the **Retain style**, **Anti-alias**, and **Create as vector** boxes are marked. Creating the button as a vector will allow you to easily edit its look.



6. With the Preset Shapes Tool, line up the cross with the upper left-hand side of the background, click, and drag your mouse until the button is the size you want.



Change the Color

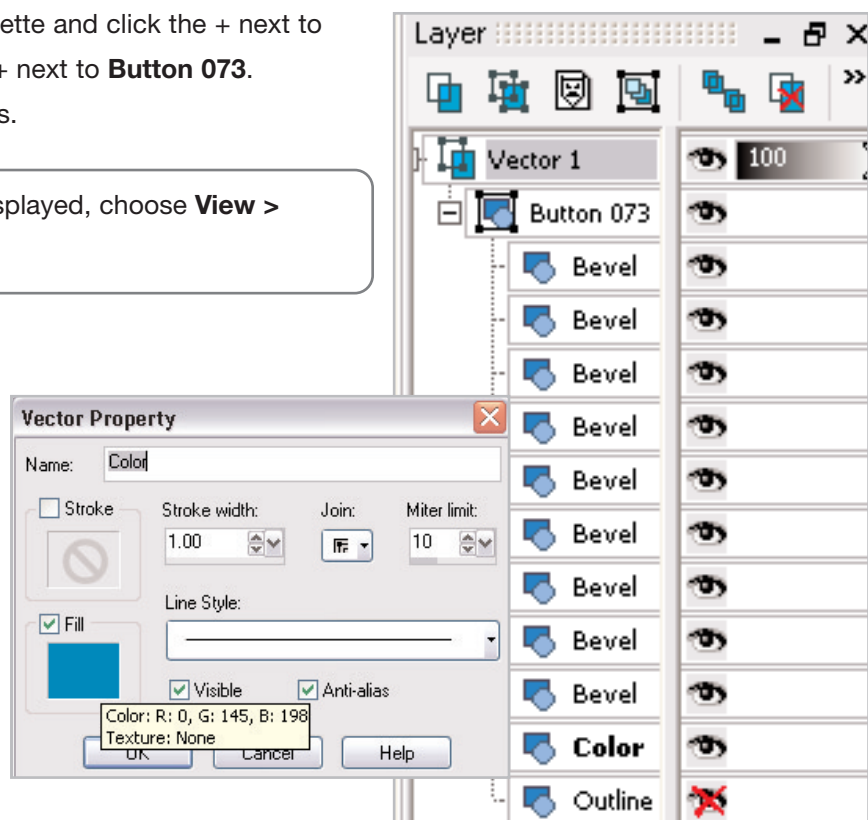
7. Mouseover the Layer palette and click the + next to **Vector 1**, then click the + next to **Button 073**. This expands those items.

Tip: If the Layer palette isn't displayed, choose **View > Palettes > Layers** or press **F8**.

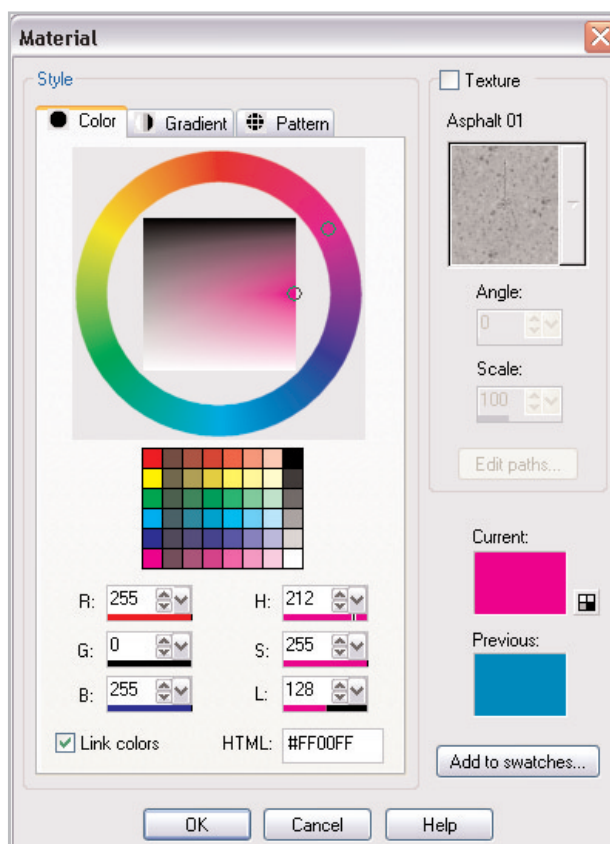
8. Under **Button 073**, double-click on the Vector Object labeled **Color**.

9. In the Vector Properties dialog, click the **Fill** box. This opens the

Material dialog.

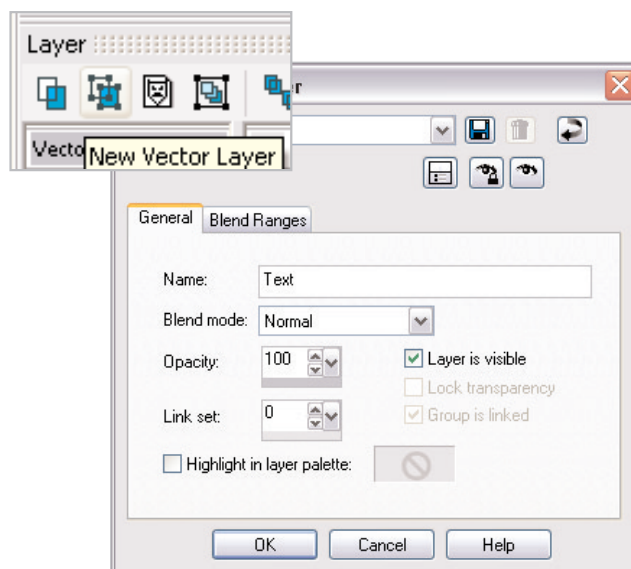


10. In the Material dialog, you can click anywhere on the colored circle or click any of the colored boxes below the circle to choose a color for your button. Once you've chosen a color, click **OK**.



Add Text

11. On the Layer palette click the **New Vector Layer** button and name the new layer **Text**.



12. Select the **Text** Tool from the Tools toolbar.

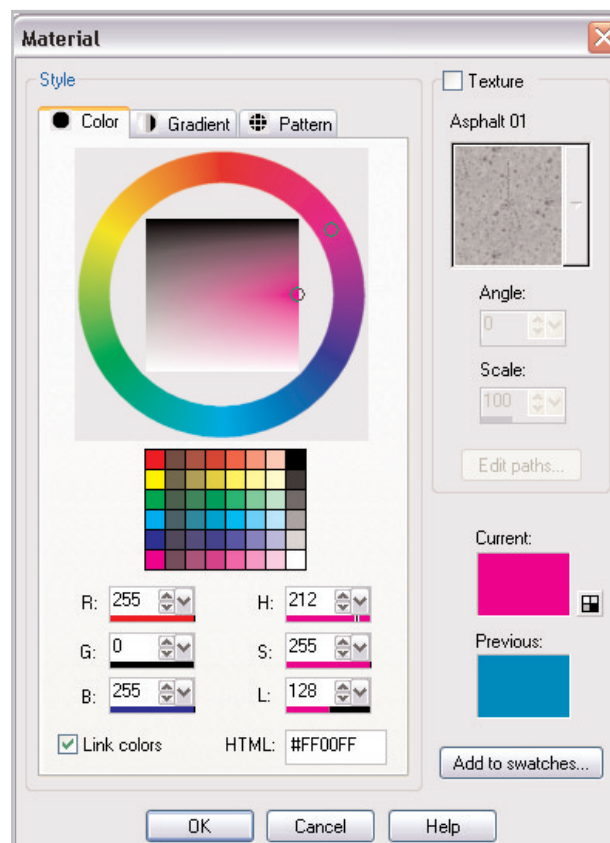
13. On the Tool Options palette at the top of the screen, you can choose your font and font size. Make sure to choose **Vector** from the Create as: drop-down, and mark the **Anti-alias** box.



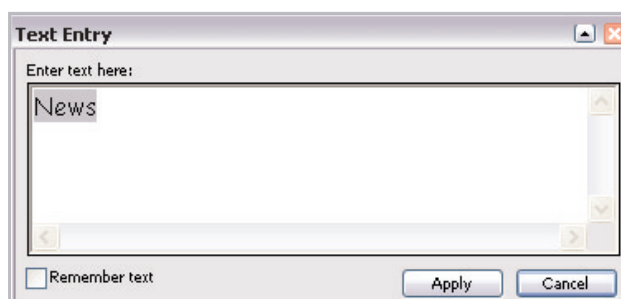
Note: Creating the text as a vector will make it easier for you to manipulate the text.

For this example, we used **Comic Sans** at 26 points and a stroke width of 2. While Comic Sans works well, you can use your favorite font and font size.

14. Once you've set your font and font size, you can set the color using the Materials palette, or click the Background Fill box (the lower box) to open the Material dialog. You can choose a text color the same way you choose a button color in **Step 9**. Once you've chosen a color, click **OK**.



15. Now, click inside your button. This opens the Text Entry box, where you'll add the text you want for your button. Once you've entered your text click **Apply**. For this example, we typed News.



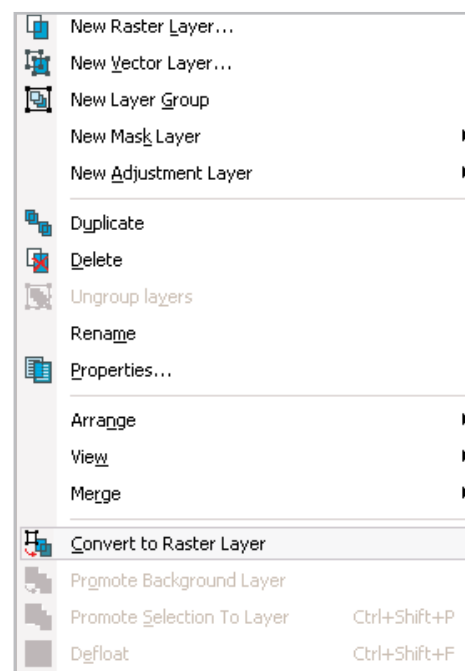
Position the Text

16. Move the text on your button by clicking the circle in the middle of the boundary box and dragging the box into position. When the Mover icon is displayed, you can place the text where you want it to appear on the button.

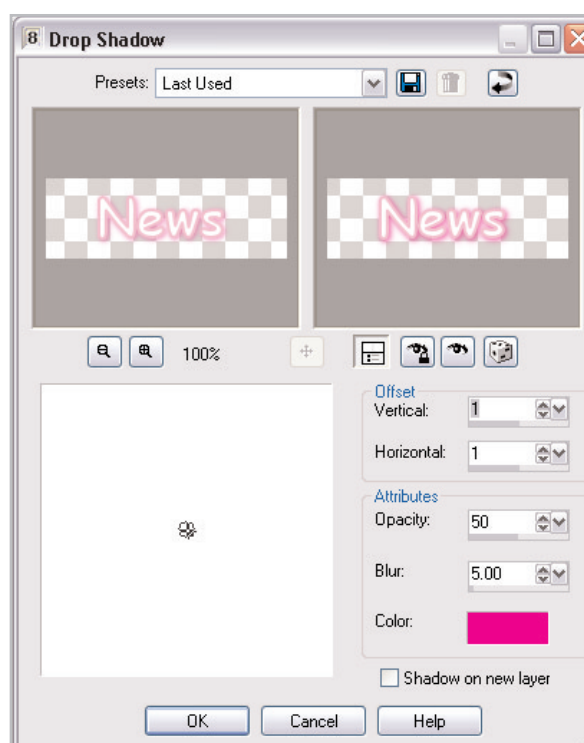


Add a Drop Shadow

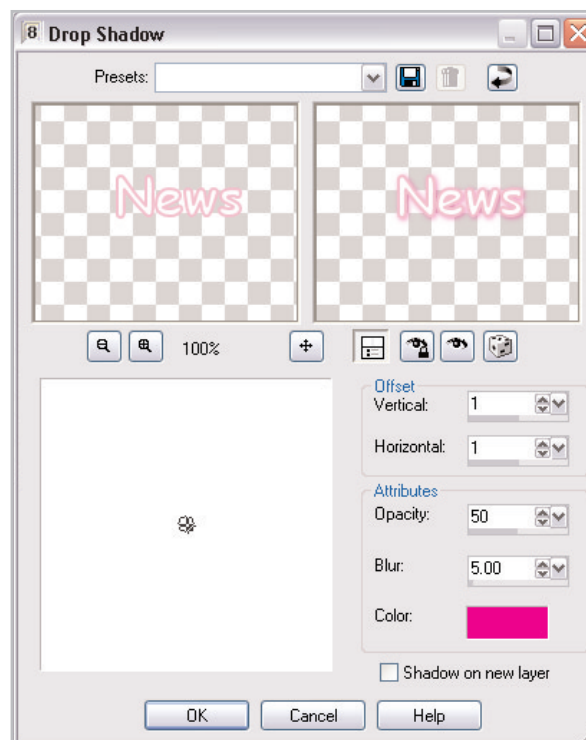
17. Flat text might not stand out enough on the Web, so let's add a shadow behind the text, or a drop shadow. Before you can add a drop shadow, you have to convert your vector text layer to raster. Mouseover the Layer palette to expand it.



18. Now choose **Effects > 3D Effects > Drop Shadow**.

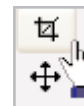


The Drop Shadow dialog allows you to adjust the placement, color, and opacity of your drop shadow. From the **Offset** area you can choose how far your shadow shows up from your original text. Here we set both **Horizontal** and **Vertical** to **1**, since we want our shadow right below and to the right of our text. From the **Attributes** area you can choose the blur, opacity, and color of your shadow. Here we use the same color as our font, which works well in general. At the top of the dialog you will see your text without the drop shadow and a preview of the text with the drop shadow applied. To see how the drop shadow will appear on the image, click the **Proof** button (the eye under the right preview window). Once you are satisfied with the appearance of the drop shadow, click **OK**.



Crop

- 20.** To get rid of the extra background, and keep your Web button as small as possible, crop your button. Choose the **Crop** Tool from the Tools toolbar on the left. Click and drag the Crop tool around your button to select the crop area. Now you should have a crop window on your photo. Click and drag the sides of the crop window to adjust the size. Once you're happy with the crop positioning, double click inside the crop window to apply the crop.



Tip: You can also click the **Accept** button on the Tools Options palette to apply the crop.

Next Steps:

That's all there is to it! You've created a button you can use on the Web. Work through *Speed up your Web site with the GIF Optimizer* to learn how to get your button to load quickly and beautifully.

