

Customize Holiday Cards

You can create holiday mailer cards by adding personalized text and embellishments to your photos. Using Paint Shop Pro, you can open a photo, touch it up, add room to one side, place text on the card, and add special Picture Tubes™. In just a few minutes you'll have a printable holiday card you can send to your friends and family.



What you'll need:

- A digital photo
- Jasc® Paint Shop™ Pro®
- Paper
- A printer

When you complete this tutorial you'll be able to:

- Select a photo
- Crop or resize a photo
- Fix a photo using One Step Photo Fix
- Increase the image canvas size
- Add and format text
- Use Picture Tubes™
- Print a holiday card

Open the Image

1. Choose **Start > Programs > Jasc Software > Jasc Paint Shop Pro** or double click the Paint Shop Pro Icon on your desktop to open Paint Shop Pro.



2. Choose **File > Browse** or click the **Browse** button on the Standard toolbar to open the Image Browser. Use the Image Browser to find the photo you'd like to use and open it. For this tutorial we're going to use the photo of kids with a snowman, you can follow along using your favorite digital photo.

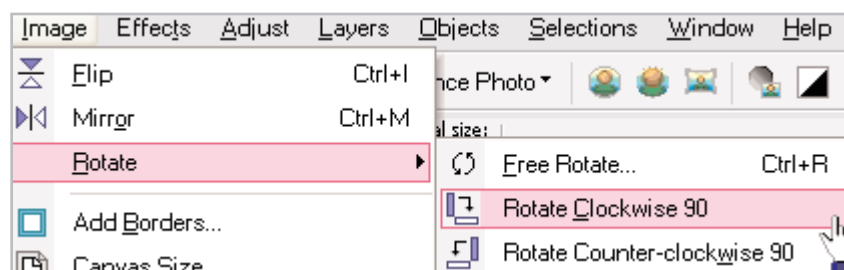


3. Paint Shop Pro's Image Browser works like Windows Explorer. On the left, navigate to the folder containing the photo you want to use. On the right, double-click the photo you want to open.



Rotate, Crop, and Resize Your Photo

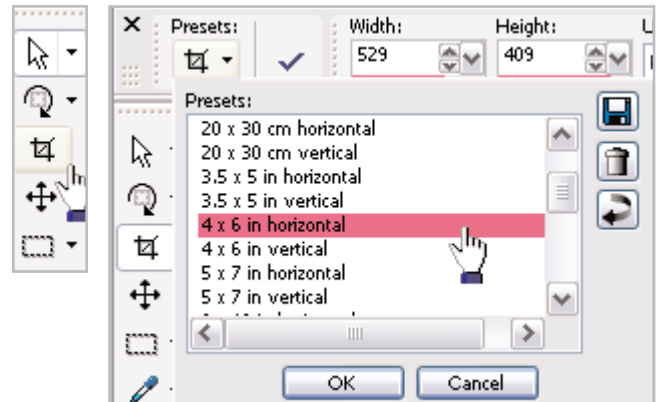
4. If the orientation of your photo isn't right, you can rotate it. Choose **Image > Rotate** and then choose one of the rotation options.



5. To focus attention on your photo's subject, crop the photo. Choose the **Crop** tool from the Tools toolbar on the left.

■ **Freehand Crop:** Click and drag the **Crop** tool across your photo to select the crop area.

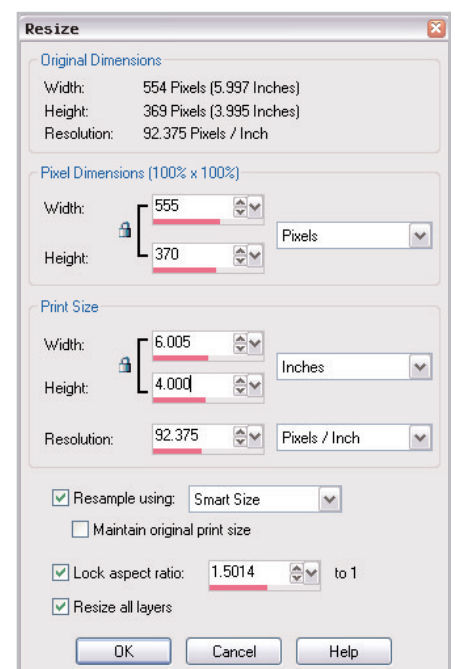
■ **Preset Crop:** You can crop to a specified photo size, using the presets. Click the down-arrow next to the **Presets** button on the Tool Options Palette. From the drop-down list choose **4x6 in Horizontal** (or **4x6 in Vertical** if you're using a vertical photo). Since we're designing a card to fit in a standard business size envelope, you don't want to go larger than 4x6. Once you find the preset you'd like to use click **OK**.



6. Now you should have a crop window on your photo. Click and drag the sides of the crop window to adjust the size. Click inside the crop window and drag it to position the window over the area of the photo you want attention focused. Once you're happy with the crop positioning, double click inside the crop window to apply the crop.

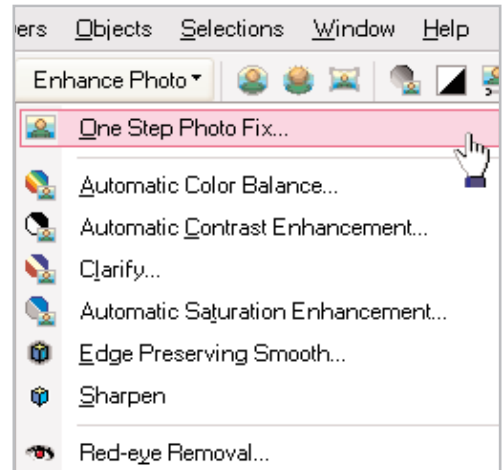


7. Since you've cropped your photo, you might need to resize it to make sure it's still 4X6 inches. To resize, choose **Image > Resize**. In the Resize dialog, change the **Print Size** to Width: 6 and Height: 4 (or if you're working on a vertical photo Width: 4 and Height: 6). Click **OK** and your image will be resized. Don't worry if the Width and Height Fields aren't exactly 4 and 6, we've got a little extra room on the card.



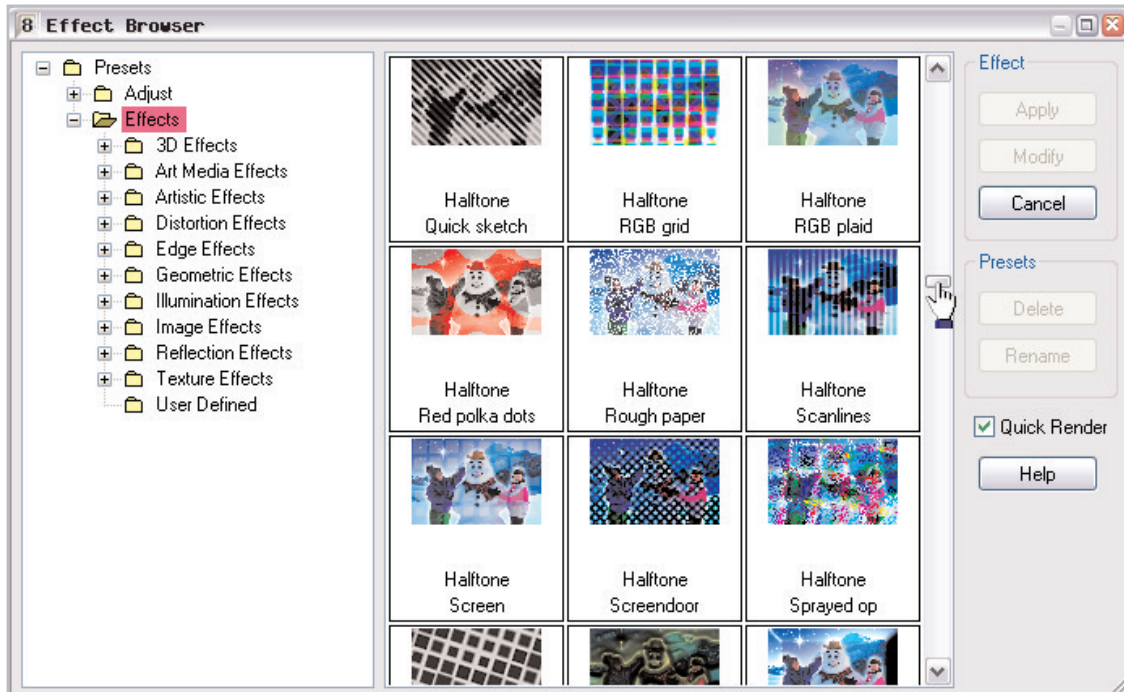
Fix Photos in One Step

8. If you think your photo has room for improvement, you can fix the color, contrast, and other photo problems in one step. To fix photos instantly, display the **Photo toolbar** (if it isn't already displayed choose **View > Toolbars > Photo**) and in the Enhance Photo drop-down, choose the first item **One Step Photo Fix**. This will run a series of six photo corrections on your photo. If you don't like the results, once the script is finished, you can undo the corrections by pressing **<Ctrl + Z>**.



Add a Special Effect

9. You can give your photo extra flair by adding one of Paint Shop Pro's special effects. Choose **Effects > Effect Browser**, this will open a browser window. Select the Effects folder to preview how the effects will look on your photo. If you find an effect you like, select that effect in the browser and click **Apply**.

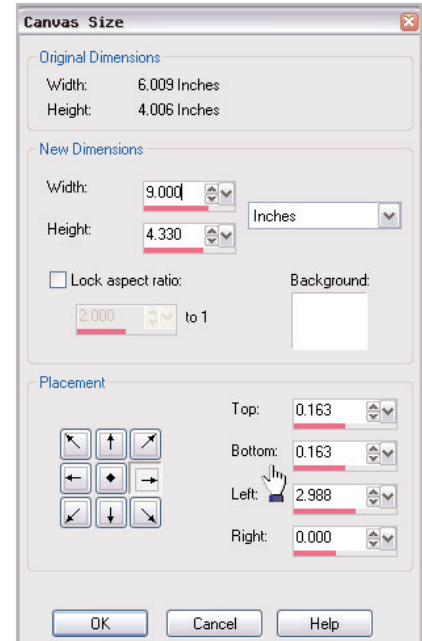


Enlarge the Canvas

10. Since we want to add a personalized greeting, we'll need to add more space to one side of the photo. Choose **Image > Canvas Size** to expand the canvas. In the Canvas Size dialog, notice the original dimensions listed at the top. Simply add an appropriate number of pixels to either side.

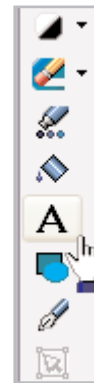
Since we're working on making a holiday card that will fit in a standard business size envelope, which is 4 1/8 x 9 1/2 inches, in the New Dimensions area, choose Inches from the drop-down. Then adjust the height or width to 9 inches. If you are using a horizontal photo, make the width nine inches. A vertical photo will need a height of nine inches.

In the Placement area, choose the left or right arrows for horizontal photos, and the top or bottom arrows for vertical photos. Once you've gotten everything set, click **OK**.

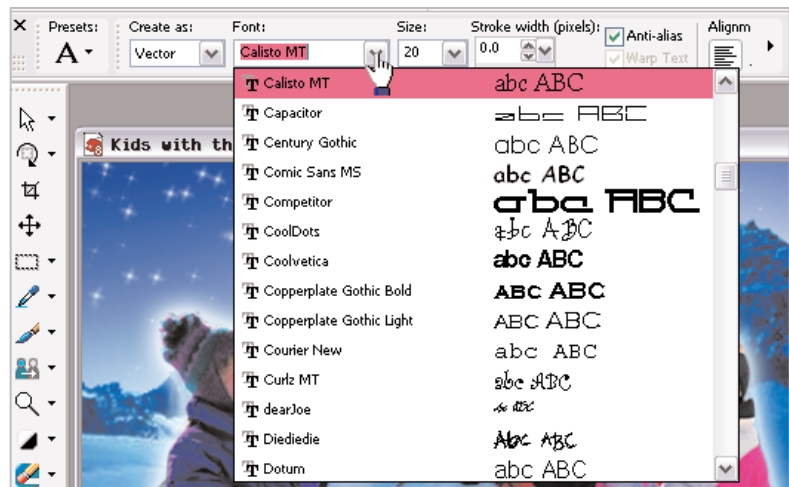


Add Text

11. Now it's time to add your personalized holiday greeting using the Text tool. Choose the **Text** tool from the toolbar on the left.



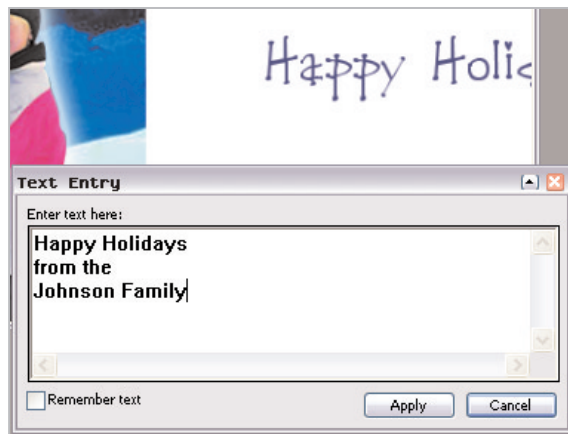
12. In the Tool Options palette at the top of the screen, you can choose your font and font size. Make sure to choose **Vector** from the **Create As:** drop-down, this will let you move the text easily.



13. Once you've set your font and font size, you can set the color using the Materials palette. Click the Background swatch (the lower box) to open the Material dialog, here you can choose the color of your text. You can click any of the color boxes below the circle, click anywhere on the colored circle, or click on an area of your image, to choose a color for your text. Here we used the blue from the boy's coat. Once you've chosen a color, click **OK**.



14. Now, click the white area of your image. This opens the Text Entry dialog, where you'll add your personalized greeting. Once you've entered your greeting click **Apply**.



15. Once the text is applied, you can click the center circle and drag the text into place.

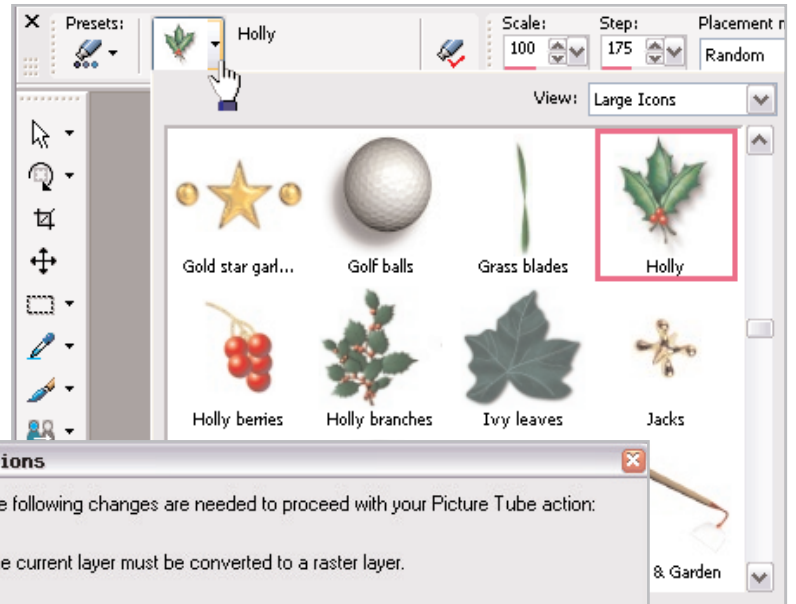


Add a Decorative Touch

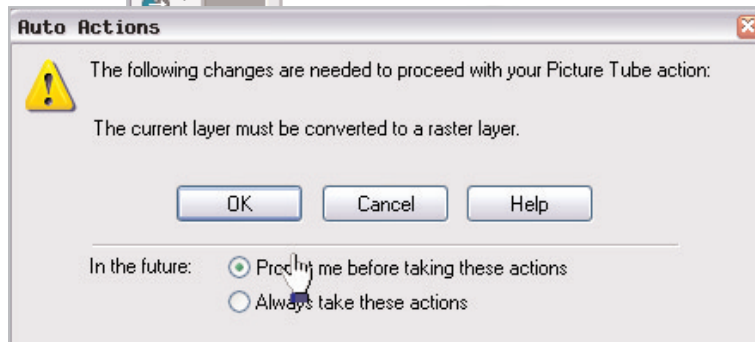
16. You can easily add a special decorative touch using Picture Tubes. Choose the **Picture Tube** button from the Tools toolbar on the left.



17. From the Tool Options palette at the top, click the down-arrow next to the small picture, this will display all the Picture Tubes you can choose from. Select the Picture Tube you'd like to use. For this example, we used **Holly**.



18. Now click your image. You'll get an Auto Action message asking if you want to convert the current layer to a raster layer, click **OK**.

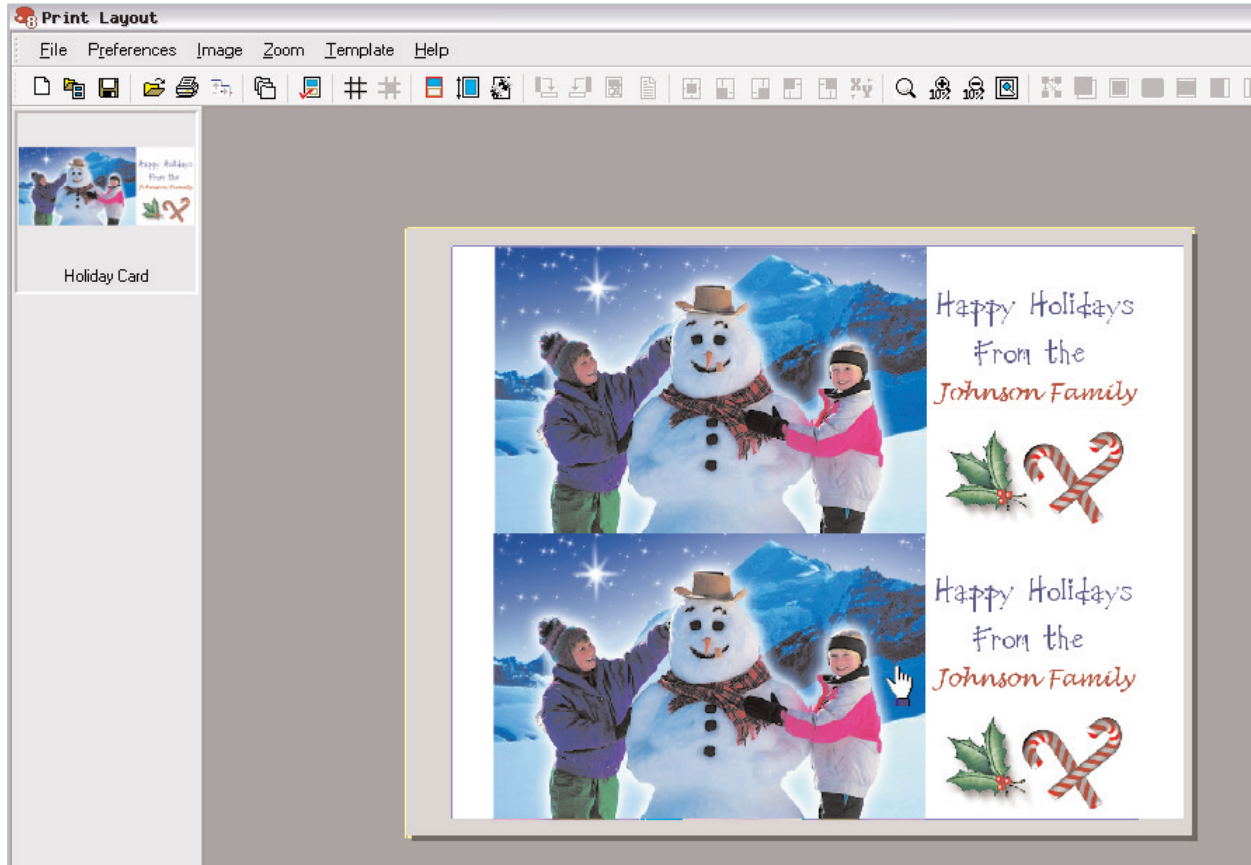


19. To paint with the Picture Tubes, just click your image. If you don't like the placement of the Picture Tube press <Ctrl + Z>, this will undo the placement of the Picture Tube. Click again to apply the Picture Tube. You'll have to experiment to get the Picture Tubes the way you like.



Print Your Card

20. Now you're ready to print. Choose **File > Print Layout**. In the Print Layout window you can drag the photo into the blank template, or choose **File > Open Template** and select one of the many preset print templates. Click the **Print** button to send your card to the printer. Here can see how the multiple copies of the image fit on a single page. This can save you time and resources. Once you print the cards, they're ready to cut out and mail!



This is only the beginning. Now that you know how to make a holiday card, you can make and send these personalized cards for every occasion! With Paint Shop Pro creating a card that's uniquely you is fun and easy.

