

Remove Unwanted Elements from Your Photos

Is there something marring your otherwise perfect photo? An elbow in the way? A trashcan that's distracting? This isn't a problem with Paint Shop Pro. Using the Clone brush, you can remove distracting or unwanted elements from your photo, leaving you with the beautiful, idyllic scene you wanted to capture.

What you'll need:


- A digital photo
- Jasc® Paint Shop™ Pro®

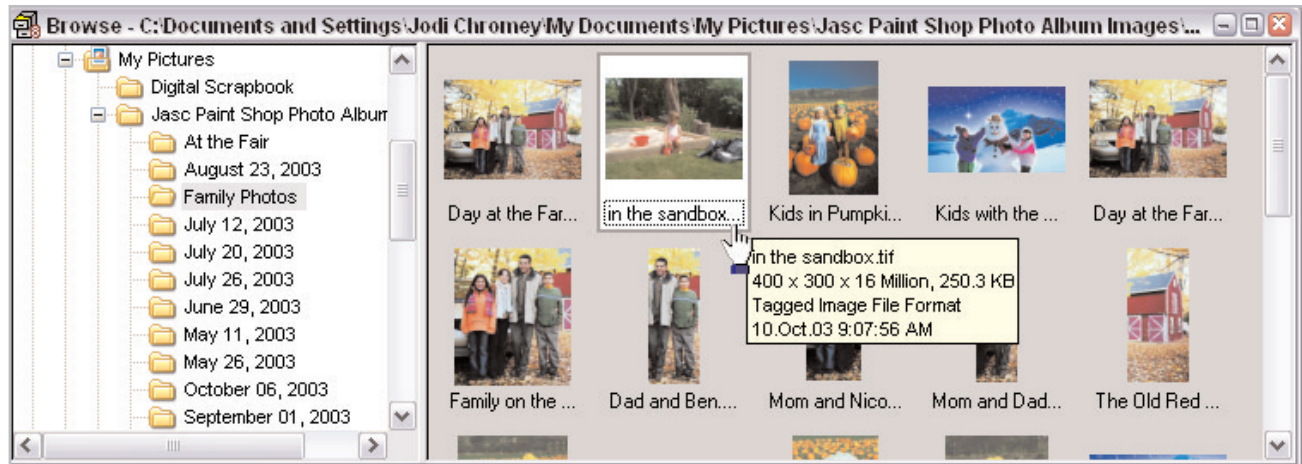
When you complete this tutorial you'll be able to:

- Open a photo in Paint Shop Pro
- Set up your Workspace for a project
- Add a layer to a photo
- Set the Clone brush options
- Remove unwanted elements with the Clone brush
- Save a new image



Open Your Image

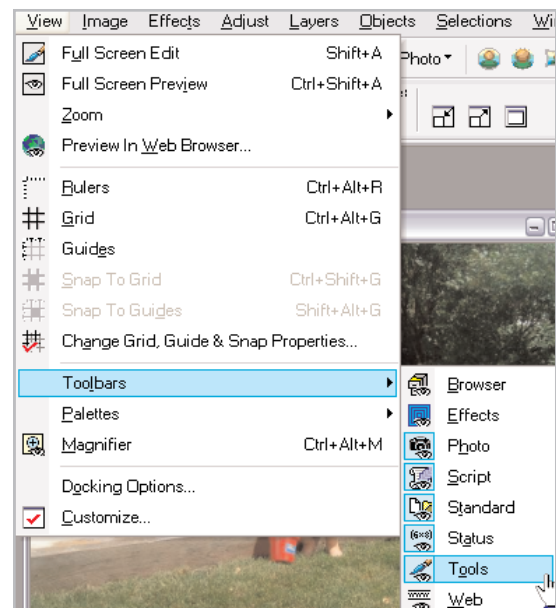
1. Choose **Start > Programs > Jasc Software > Jasc Paint Shop Pro** or double click the Paint Shop Pro Icon on your desktop to open Paint Shop Pro. 
2. Choose **File > Browse** or click the **Browse** button on the Standard toolbar to open the Image Browser. Use the Image Browser to find the photo you'd like to use and open it. For this tutorial we're going to use a photo of a little girl in a sandbox. If you've downloaded this image you can follow along using it, or you can use your own photo.



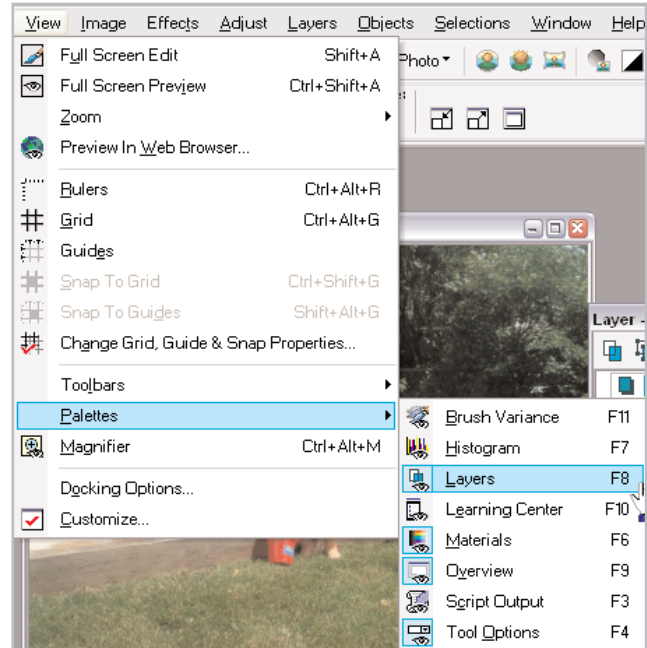
3. Paint Shop Pro's Image Browser works like Windows Explorer. On the left, navigate to the folder containing the photo you want to use. On the right, double-click the photo you want to open.

Set Up Your Workspace

4. Before you get started you'll want to make sure the Tools toolbar, Tool options palette, and the Layer palette are displayed. Choose **View > Toolbars > Tools** to open the Tools toolbar.



5. Choose **View > Palettes > Layers** and then choose **View > Palettes > Tool Options** to display the Layer and Tool Options palettes.



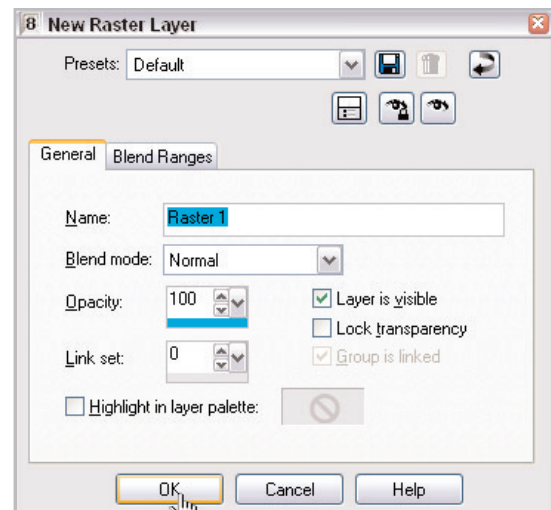
Create a New Layer

6. Create a new raster layer by clicking the New Raster Layer button on the Layer palette toolbar, or by choosing **Layers > New Raster Layer**.



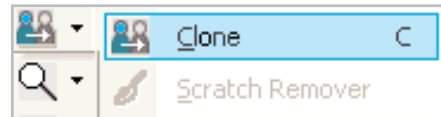
7. In the New Raster Layer dialog, click **OK** to accept the default settings.

Tip: Use new layers to make edits. This prevents the original layer (Background layer) from being altered.



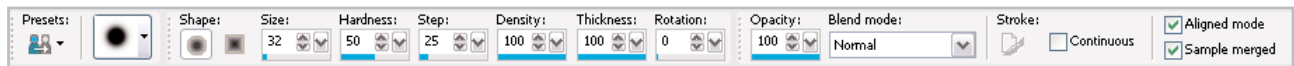
Set the Clone Brush Options

8. Choose the **Clone brush** from the Tools toolbar.



9. On the Tool Options palette set:

- Shape to **Round**
- Size to **32**
- Hardness to **50**
- Step to **25**
- Opacity to **100**
- Blend Mode to **Normal**
- Mark the **Aligned Mode** check box
- Mark the **Sample Merged** check Box



Remove the Element

10. In the layer palette, click the Raster layer you created in Step 6, to make sure it's active.



11. Begin removing the unwanted element by right-clicking the grassy area in front of the bag (or the portion of your photo you want to remove), this defines the source pixels.



12. Move the cursor over the element, hold down the left mouse button, and drag over the element to begin painting with the source (grass) pixels. Use slow, careful strokes, making sure not to paint over any part of the sandbox (or areas you want to keep) with the grass. Here you can see the bag being painted over. The crosshair indicates the current source position. The source moves in tandem with the Clone brush as you paint.



13. Continue painting like this until only the portion of the bag covering up the sandbox remains (or until the element you want to remove is gone). We'll show you how to change the Tool Option settings to remove elements from different areas.

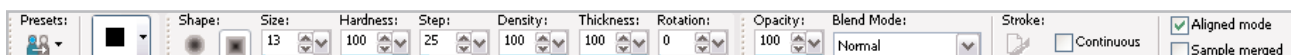


Note: The Clone brush covers target pixels with source pixels. To use this tool, right-click over the desired source area, and then drag (with the left mouse button) over the target area. You'll be painting over it with source area pixels.

Change the Tool Options

14. Now, if you're following along with the sample image, you're ready to cover up the rest of the bag. If you're using your own image, you might find that to make the cloning look realistic you'll need to tweak the settings in the Tool Options palette for each area you want to remove. For this example, we changed the Tool Options settings:

- Shape to **Square**
- Hardness to **100**
- Size to **13**



15. Remove the tiny portion of the bag extending beyond the sandbox edge. Right-click in the grass, and then paint just up to the edge of the wood.

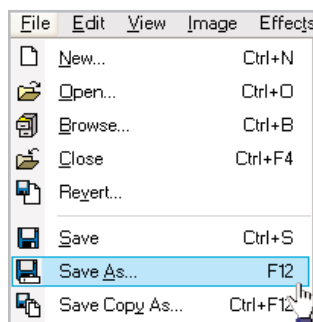
Tip: A brush's Hardness setting determines how sharp its edges are. We set this to 50 when painting with the grass to create more of a blended look. We set this to 100 when painting with the sandbox's wood because the wood has a sharp, solid edge.

16. Carefully paint over the rest of the bag, making sure to keep the brush on the wood up to the edge of the sandbox.



Save Your New Image

17. Now that you're done, you save your image. Choose **File > Save As**. In the File Name field give your photo a new title. In the Save as type field save it as a Paint Shop Pro Image to retain the layer information, or you can save it as a jpeg if you want to e-mail it to friends and family and show them what you've accomplished with Paint Shop Pro.



Next Steps:

Now that you've learned the basics of the Clone brush, you can use it to remove distracting or unwanted elements from all your photos. With this tool you can improve virtually any photo by simply removing the parts you don't like.

If you'd like to see the basis for this tutorial watch the **Clone Brush** movie in the Paint Shop Pro 8 Product Tour (in the application, choose **Help > Product Tour**), and in the Photo Features section of the Tour, choose the **Clone Brush** movie.

