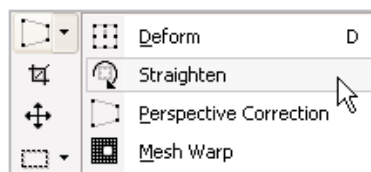


Straighten Slanted Images

You don't always have the time to carefully line up your compositions before pressing the shutter, so your photos might come out slanted. Don't worry. With Paint Shop Pro 8's Straighten Tool, you can easily fix slanted photos. With the Straighten Tool and this tutorial, you can line up the photo to that frame of reference. The Straighten Tool also allows you to crop the photo to the new position.



What you'll need:

- The photo Choir.jpg from the Jasc Learning Center
- Jasc® Paint Shop™ Pro®

When you complete this tutorial you'll be able to:

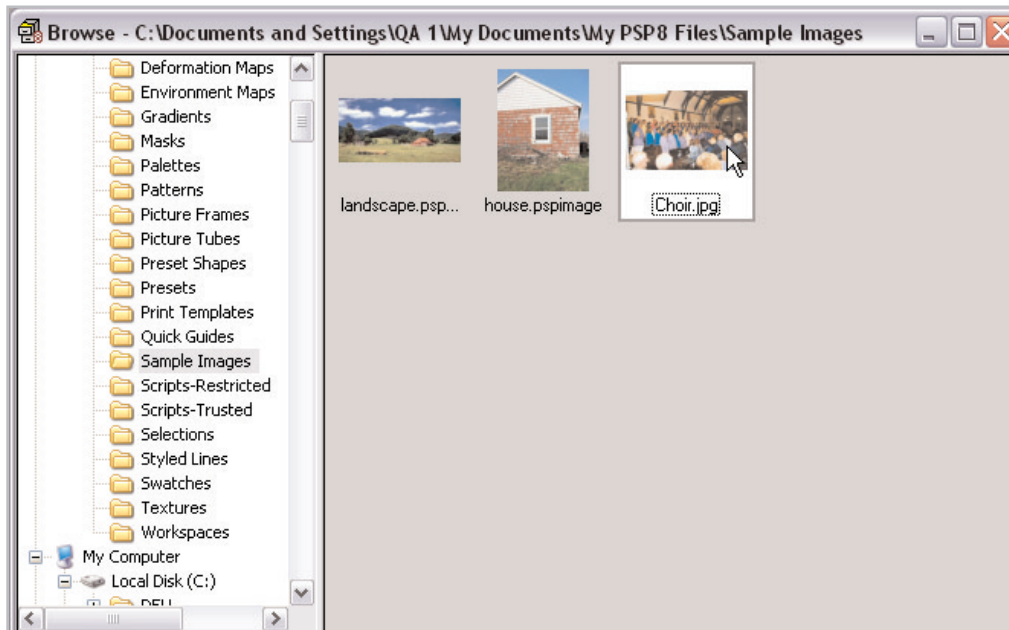
- Open Choir.jpg
- Set Straighten Tool options
- Position the straightening bar
- Straighten a photo
- Sharpen a photo

Open the Photo

1. If Paint Shop Pro 8 isn't already open on your computer, start it up by choosing **Start > Programs > Jasc Software > Jasc Paint Shop Pro** or double click the Paint Shop Pro 8 Icon on your desktop.

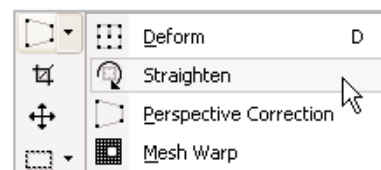


2. Choose **File > Browse**. Use the Image Browser to find Choir.jpg on your computer and double click the thumbnail to open the file.



Set the Tool Options

3. Select the **Straighten** Tool from the Deform Tool fly-out.



4. In the Tool Options palette set:
 - Mode: **Auto**
 - Angle: **0**
 - Mark the **Crop image** box
 - Unmark the **Rotate all layers** box



Position the Straightening Bar

5. Move the Straighten bar so the left handle is even with the beam at the top of the photo.



6. Drag the right handle to align the bar with the beam.



Note: Place the straightening bar on a line in the image that you know should be vertical, choose **Make vertical** and click **Apply** to straighten. Likewise, you can place the straightening bar on a line in the image that you know should be horizontal and choose **Make horizontal** and click **Apply**.

Note: If you want to reposition the straightening line, press **Reset** in the Tool Options palette to return the straightening line to its default length and position.

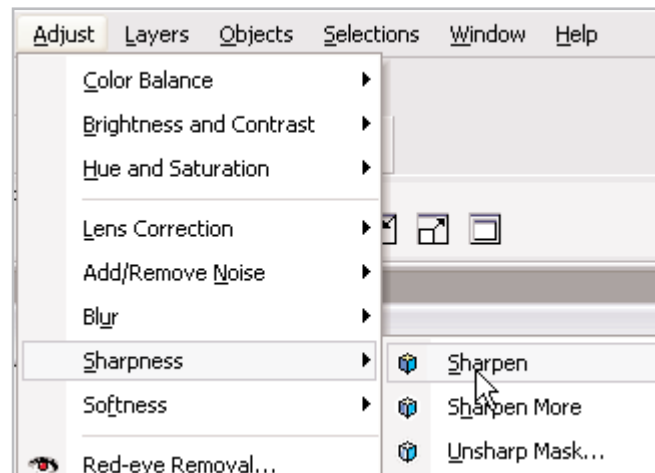
Apply the Straighten and Crop

7. Click **Apply** in the Tool Options palette, to straighten the photo. 

Note: If you want to change the results of the straightening correction, choose **Edit > Undo** to return to the original image. Then reposition the handles and apply the correction again.

Sharpen the Photo

8. Choose **Adjust > Sharpen**. This will compensate for any blurriness that may have resulted from straightening the photo.



Next Steps:

Now that you know how to straighten images quickly and easily with Paint Shop Pro's Straighten Tool, you are free to take lots of photos without worrying about lining them up perfectly. Also, you can improve the composition of all those old crooked photos hiding in shoeboxes in your closet.

