

Crop and Frame Your Photos

Paint Shop Pro's crop tool gives you total control over your photo compositions. Cropping allows you to turn busy portraits into professional prints. And when you have a nicely cropped photo, what better way to display it than in a custom frame? Your cropped and framed portraits are bound to become family favorites.

What you'll need:

- A digital photo
- Jasc® Paint Shop™ Pro®

When you complete this tutorial you'll be able to:

- Open a photo in Paint Shop Pro
- Set up your Workspace for a project
- Use the Crop tool
- Apply a Picture Frame to an image
- Save the image



Jasc Software®

the power to create®
www.jasc.com

Open the Photo

1. If Paint Shop Pro 8 isn't already open on your computer, start it up by choosing **Start > Programs > Jasc Software > Jasc Paint Shop Pro 8**, or double click the Paint Shop Pro 8 Icon on your desktop.



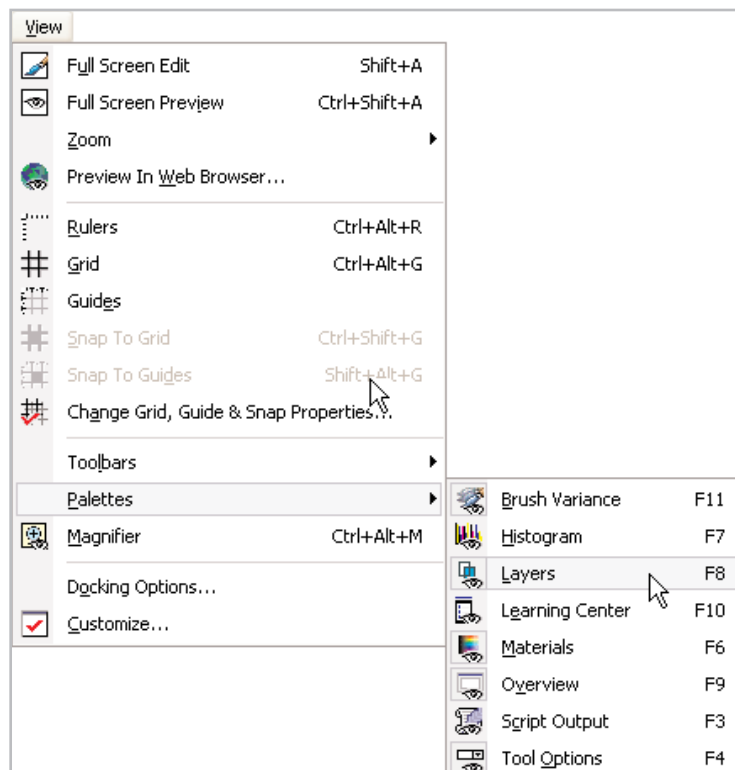
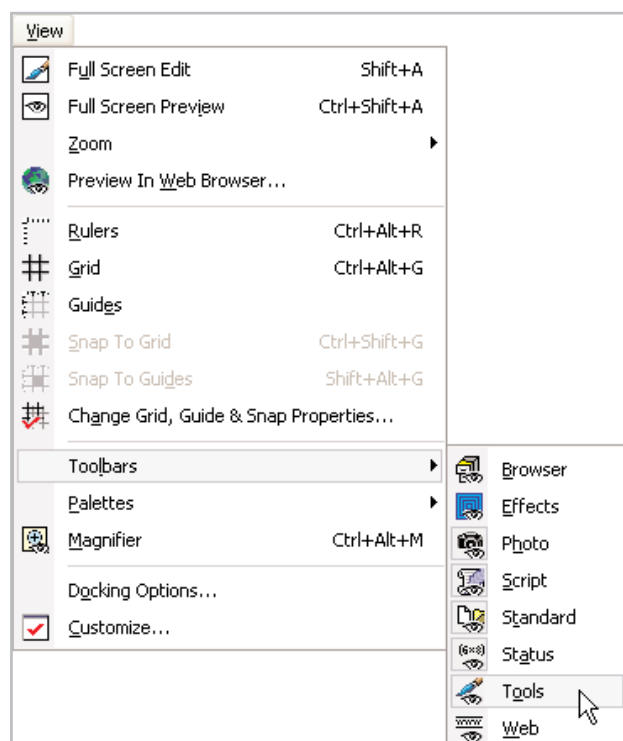
For this tutorial we're going to use the photo tomato-boy.pspimage. You can follow along with your own photo.

2. Choose **File > Browse**. Use the Image Browser to find a photo of your choosing on your computer and double-click to open the file.

In tomato-boy.pspimage, you'll notice a few distracting elements in this photo such as the cars in the background on the left. Our job is to crop those elements out and frame the end result.

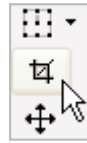
Set Up Your Workspace

3. Before you get started, you'll want to make sure the Tools toolbar, Tool Options palette, and the Layer palette are displayed.
 - Choose **View > Toolbars > Tools**.
 - Choose **View > Palettes**, and then choose the **Tool Options** and the **Layers** palettes.



Set Up Your Workspace

4. Select the **Crop** Tool from the Tools toolbar.



5. Place the cursor to the left of the subject you want to emphasize.



6. Hold down the left mouse button and drag a crop rectangle down and to the right. Release the mouse button at a position just to the right of the subject. In `tomato-boy.pspimage`, the drag ended to right of the wire tomato cage in front of the boy. The crop rectangle should look something like this.



Adjust the Crop Rectangle

7. Let's make some slight adjustments to the crop rectangle. Before we do this, take a look at the Tool Options palette's Height, Width, Left, Top, Right, and Bottom values. These values indicate the current size (in Pixels, Inches, or Centimeters) and pixel position of the crop rectangle. You can adjust the crop rectangle by entering new values in these fields. You can even move the rectangle around by placing the cursor inside and dragging it. But for the purposes of this tutorial, we'll simply place the cursor over the edges of the crop rectangle and drag it.

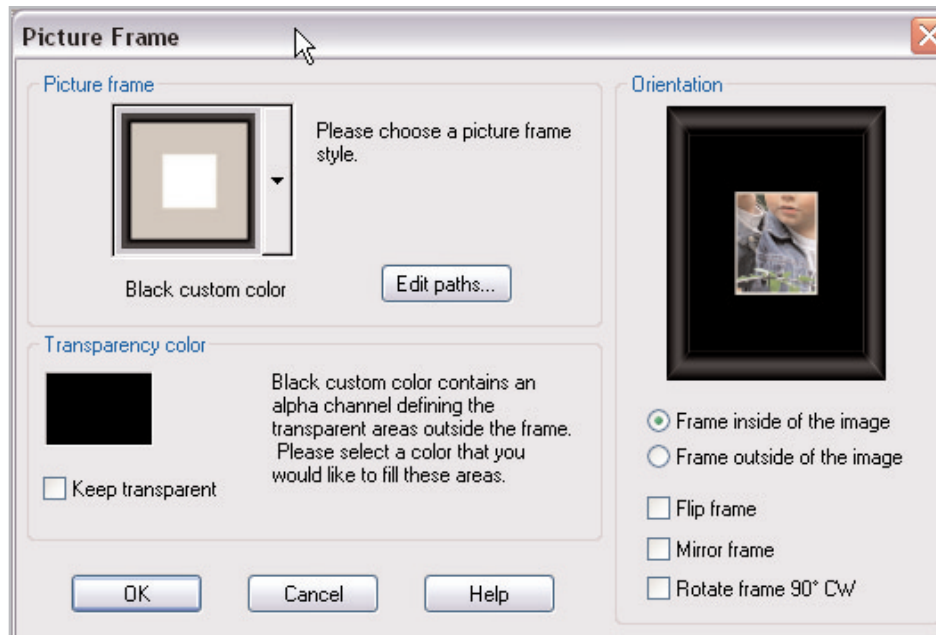
Note: If you have a photo that you intend to crop and retouch (such as the color and tonal corrections, applying the One Step Photo Fix script, etc.), we strongly recommend that you crop the photo first, and then apply the corrections. The correction commands will take the entire image into account when you correct before cropping. By cropping the image first, you will then apply the corrections only to the portion of the image you intend to save.

8. To crop the photo, click **Apply** or double click inside the crop rectangle.

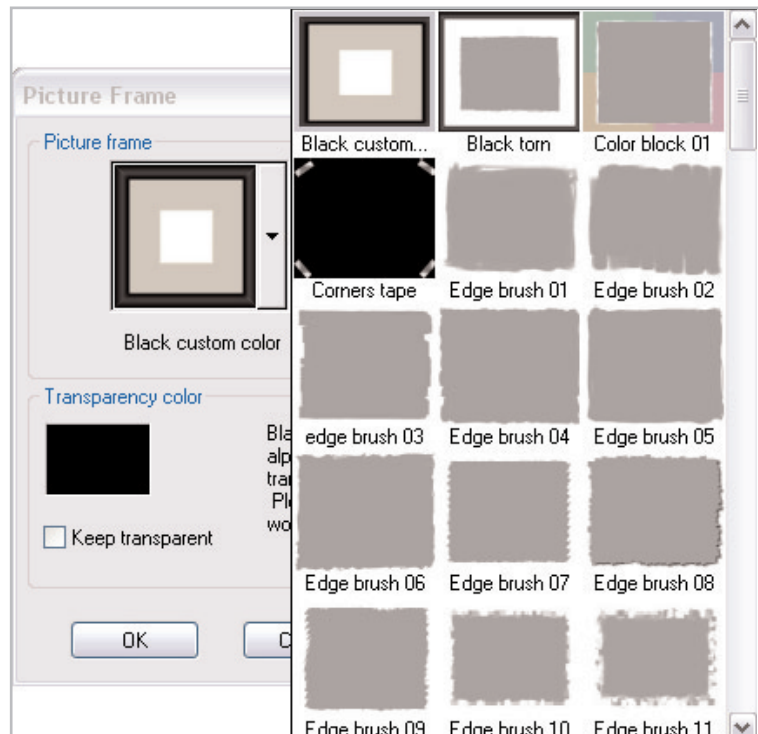


Apply a Picture Frame

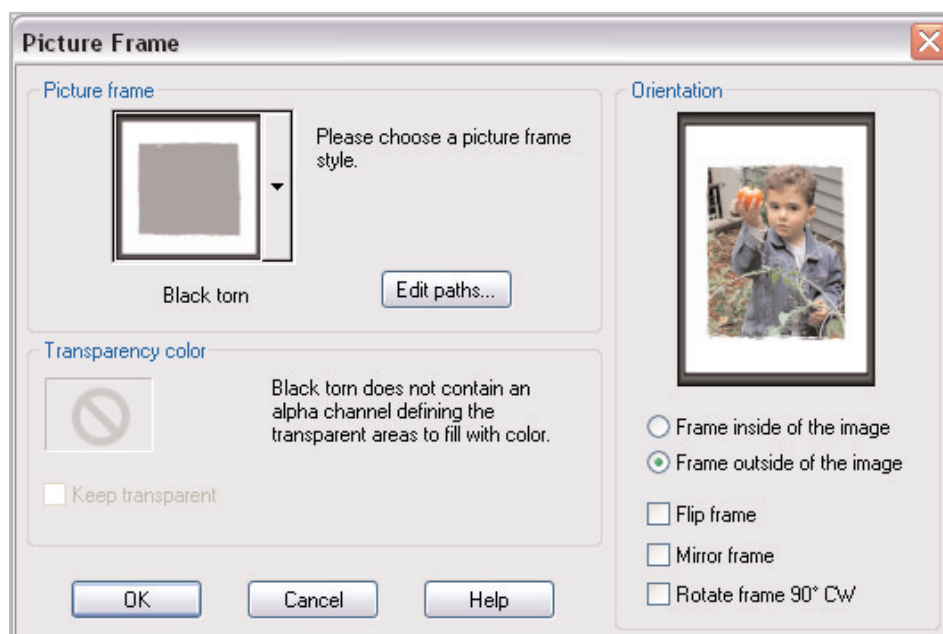
9. The cropped image is quite an improvement over what we started with. By cropping out the distracting elements of the original photo, we've added emphasis to the subject and improved the overall composition. This image is now a good candidate on which to apply one of Paint Shop Pro's many Picture Frames. Choose **Image > Picture Frame**.



10. In the upper left of the Picture Frame dialog, click the down arrow next to the thumbnail of the picture frames. Scroll down the list and select the frame **Black Torn** by clicking it. The list will close and on the right side of the dialog (in the Orientation section) you'll see a preview of the image with the Black Torn frame around it.



11. Choose **Frame outside of the image**. This option doesn't hide any part of the image you just cropped. Click **OK** to apply the Picture Frame.

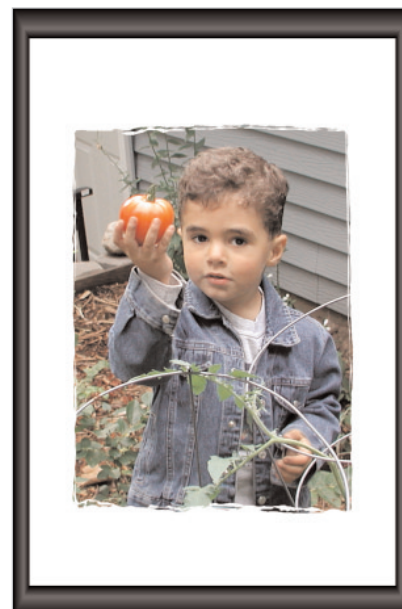


Note: After applying a Picture Frame, take a look at the Layer palette. Picture Frames are automatically applied on a separate layer. Try clicking the frame layer's Visibility toggle (the eye icon to the right of the layer name) on and off to see the image with the frame and without.



Save Your New Image

12. Now it's time to save your image. Choose **File > Save As**. In the File Name field give your image a new name. In the Save as type field save it as a Paint Shop Pro Image to retain the layer information. If you want to print or e-mail the image, use the Save As command again, but this time choose a printer or Web-friendly file format such as JPG. You can then print or e-mail the image to friends and family and show them what you've accomplished with Paint Shop Pro.



Next Steps:

Now that you've successfully cropped and framed a photo, you can go back over all your albums, find the ones that could use composition help, scan them in, crop them, frame them, and print them out. Think of how vastly improved your photo albums will become with a little help from Paint Shop Pro.

