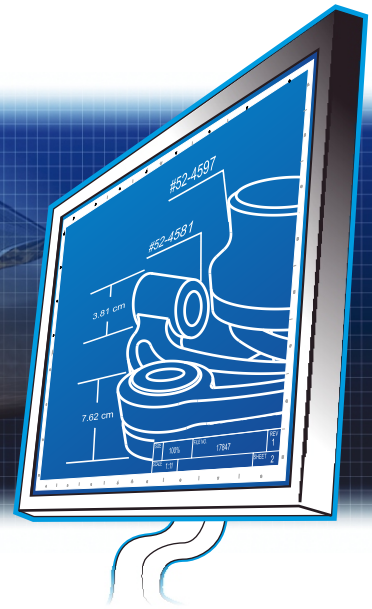


COREL® DESIGNER® Technical Suite 12

Corel DESIGNER®

Corel PHOTO-PAINT®

CorelTRACE®



Technical illustrators asked. We listened.

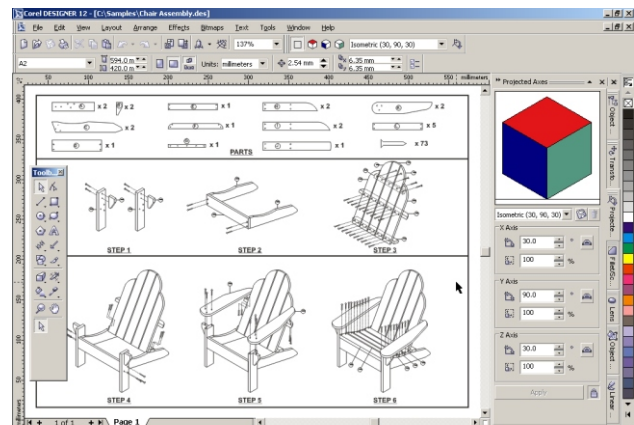
Before we started developing the NEW Corel DESIGNER® Technical Suite 12, we asked technical illustrators around the world what they needed to get their job done quickly and easily. They told us they wanted a complete software package that provided them with power, speed, precision, and compatibility. And, they wanted it at an affordable price. Corel DESIGNER Technical Suite 12 is based on these requests. Offering powerful high-end tools, precision, and efficiency at an affordable price, Corel DESIGNER Technical Suite 12 allows technical illustrators to get their job done quickly and easily.

The complete technical graphics solution

Corel DESIGNER Technical Suite 12 provides the tools technical illustrators need to complete any project. It enables technical illustrators to quickly and easily create documents using precision drawing and photo editing tools while enjoying industry-standard file compatibility.

This comprehensive suite includes:

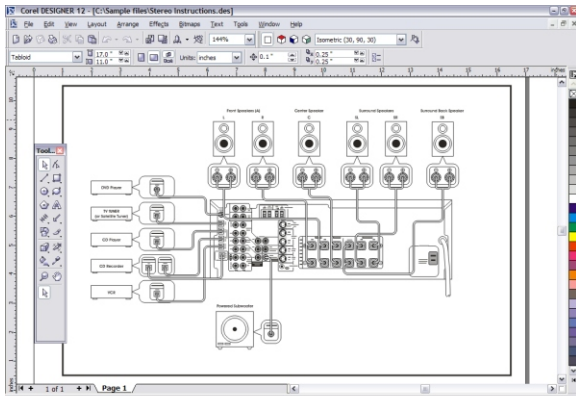
- **Corel DESIGNER® 12** - Advanced technical illustration and layout
- **Corel PHOTO-PAINT® 12** - Fast, easy, and powerful digital imaging
- **CorelTRACE® 12** - A bitmap-to-vector tracing utility
- **Corel CAPTURE™ 12** - Screen capture utility
- **Corel SVG Viewer™** - Web browser plug-in to view and interact with SVG graphics
- **Microsoft® Visual Basic® for Applications 6.3** - Object-oriented programming language to automate your work and extend Corel DESIGNER & PHOTO-PAINT
- **Thousands of Templates and Symbols**



Precision, flexibility, and ease of use

- Whether it's detailed annotations, callouts, or measurements, Corel DESIGNER Technical Suite 12 provides **the right tools for the job**, allowing illustrators to create these necessary elements quickly and easily
- **Customize your workspace** to your unique workflow. The flexibility of DESIGNER Technical Suite 12 lets you quickly tailor interface menus, commands, shortcut keys, and toolbars
- For the first time in an affordable technical documentation solution, you can use advanced features such as **Projected Drawing** to create **Isometric 3D-like drawings in a 2-D environment**

- Add intelligence behind your technical graphics with hot-spotting
- Support for more than 75 file formats, including DXF, DWG, SVG, CGM, and CDR
- **CorelTRACE 12** allows you to repurpose legacy files. Scan paper drawings and bitmaps and automatically **convert them to vector images**
- Gravity snapping and dynamic guides **ensure maximum precision** while letting you get your work done quickly and easily
- Edit photos and bitmap images with the award-winning, full featured photo-editing software **Corel PHOTO-PAINT 12**



- By including **Microsoft® Visual Basic® for Applications** and an array of industry-standard symbols, DESIGNER Technical Suite 12 lets illustrators **automate repetitive tasks** and streamline their workflow

Enhanced tools provide the speed and precision you need

- Gravity snapping lets you easily create and position objects accurately
- Unproject objects with precision and take advantage of precise coordinates to project, move, rotate, flip, and skew objects
- Copy object properties, effects, and transformations with an enhanced eyedropper tool
- Exchange files effortlessly with Unicode support that ensures text is displayed correctly
- Publish your documents to PDF without requiring additional software

- Align text objects to another object by using the first text baseline, last text baseline, or the bounding box

New tools make technical illustration easier

- Dramatically increase the speed of your technical illustrations with projected drawing modes, which enable you to represent 3D Isometric objects in two dimensions
- By helping to align, draw, and move objects in precise relation to other objects Dynamic Guides are fully customizable and give illustrators unprecedented speed and precision when designing
- Draw and edit B-splines by creating smooth, continuous curved lines that you shape by adjusting control points
- Take advantage of enhanced line styles with the ability to create lines with specific width and patterns
- Easily differentiate between materials and coinciding objects with Hatch fills. These fills are vector-based and projectable so they can be used with the projected drawing mode. Use any of the pre-defined hatch fills or create your own custom fills
- With the Fillet/Chamfer/Scalloped tools you get perfectly shaped corners every time
- Improve your productivity by choosing the workspace that's most comfortable for you. You can choose from a variety of workspaces including Adobe® Illustrator®, Micrografx® Designer, or Microsoft® Visio®
- Capture professional screenshots in no time with Corel CAPTURE 12

Minimum System Requirements

- Windows® 2000 or Windows XP (Home, Professional, or Tablet PC Edition) with latest service packs
- Pentium® III, 600 MHz or greater
- 256 MB of RAM (512 MB RAM recommended)
- Mouse or tablet
- 1024 × 768 screen resolution (768 × 1024 on a Tablet PC)
- CD-ROM drive
- 700 MB of hard disk space to install all three language packs with all content
- Microsoft® Internet Explorer 6

For more information on Corel DESIGNER® Technical Suite 12 please call **1.877.652.6735** or visit **www.corel.com/designer**

COREL®

Corel Corporation
1600 Carling Ave.
Ottawa, ON
Canada K1Z 8R7
Tel.: 1-613-728-8200
Fax: 1-613-728-9790

Corel UK Limited
Sapphire Court
Bell Street
Maidenhead
Berkshire SL6 1BU
United Kingdom
Tel.: +44(0) 1628 589800
Fax: +44(0) 1628 589801