

Creating a New SiteStyle

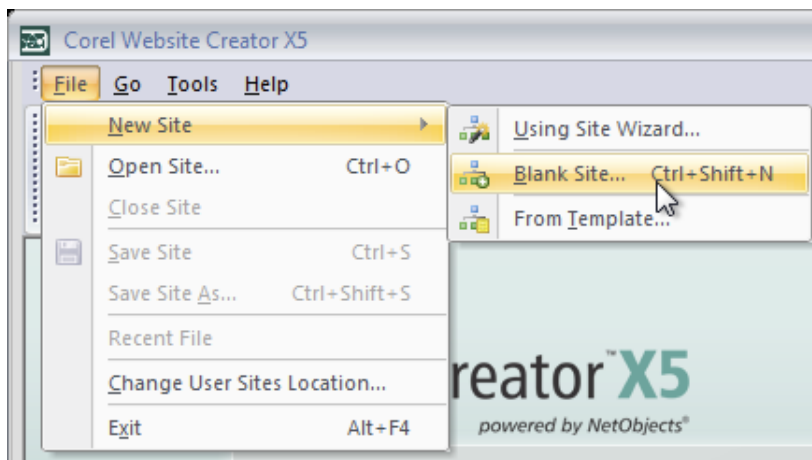
A SiteStyle is a collection of graphic and text elements that are applied to all pages in your Website built in Corel Website Creator X5. A SiteStyle can be changed at any time, updating the look and feel of your Website instantly. In this tutorial we will create a basic SiteStyle by using graphical elements and minor text style editing.

Difficulty – **Novice**

Materials – **Style.zip**

Preparation

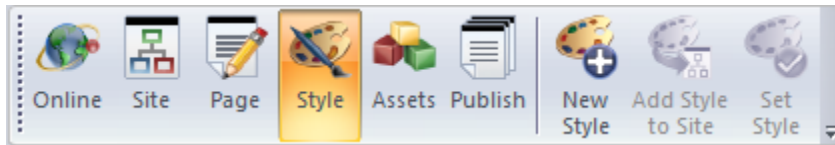
Open Corel Website Creator X5 and from the File menu select New Site > Blank Site.



Name your site style_test.

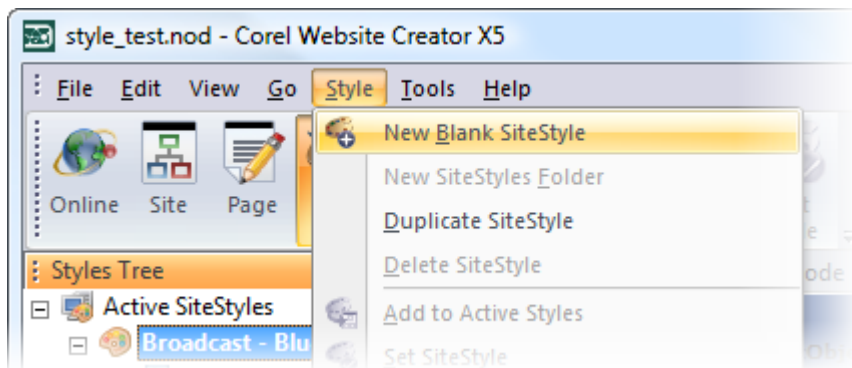
Step 1

Select the Style view from the View bar.



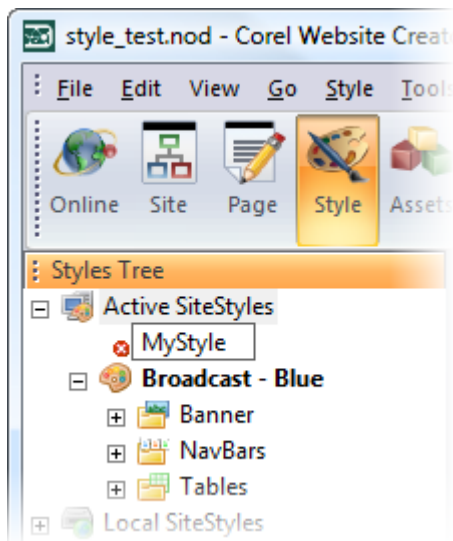
Step 2

From the Style Tree, select New Blank SiteStyle.



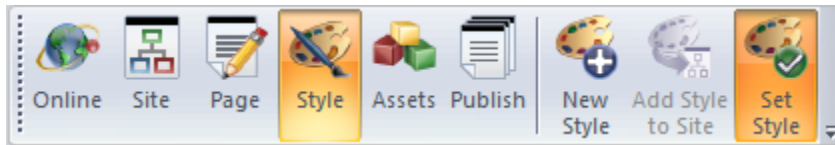
Step 3

Name your new SiteStyle MyStyle.



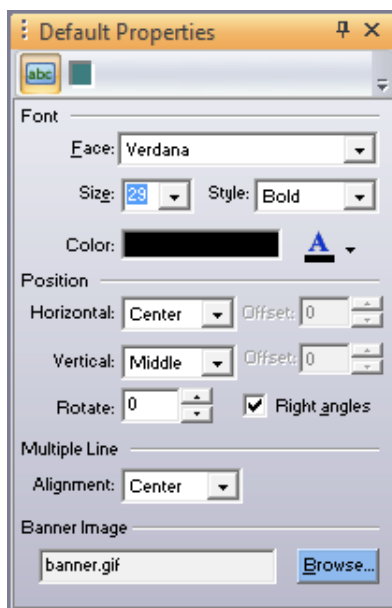
Step 4

Apply the new SiteStyle to your site by selecting the Set Style button from the View bar.



Step 5

Select the Banner element by clicking on the Banner placeholder. Select the Browse button in the Banner Default properties palette to select a new Banner image.

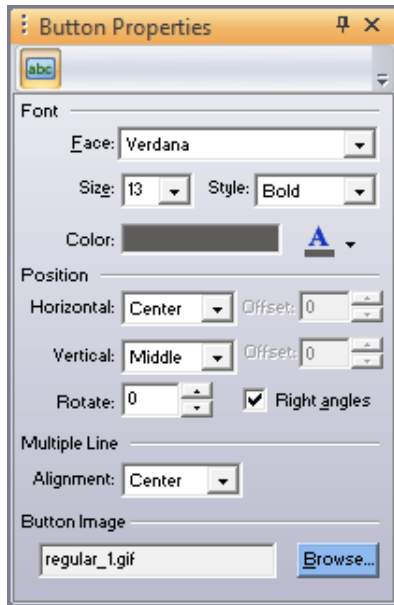


Step 6

Browse for the banner.jpg image included in the Materials section of the tutorial.

Step 7

Select the Regular State for the Primary Navigation button. Select the Browse button in the Navigation Default properties palette to select a new Button image.



Step 8

Browse for the p_Regular.jpg image included in the Materials section of the tutorial.

Step 9

Repeat these steps for the rest of the States available, using the following matrix:

- Regular Rollover – p_RegularOver.jpg
- Highlight – p_Highlighted.jpg
- Highlight Rollover – p_HighlightedOver.jpg

Also update the secondary navigation bar images using the same steps above and the following matrix:

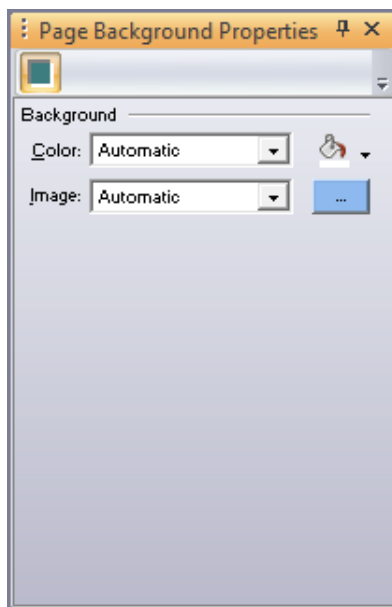
- Regular – s_Regular.gif
- Regular Rollover – s_RegularOver. gif
- Highlight – s_Highlighted. gif
- Highlight Rollover – s_HighlightedOver. gif

Step 10

Now select the Page Background element.

Step 11

From the Page Background properties palette select the browse button and locate and select the Background.jpg image included in the Materials section of the tutorial.

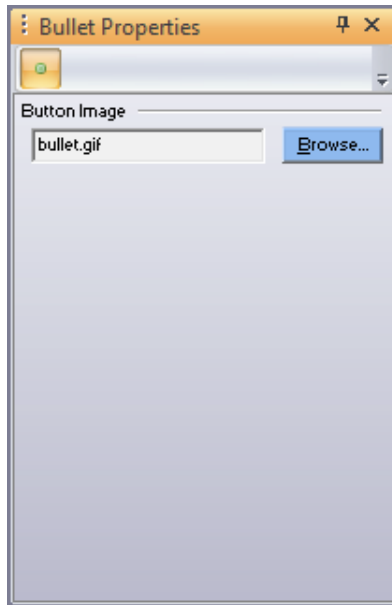


Step 12

Next, select the Data List Icon.

Step 13

From the Data List icon properties palette select the browse button and locate and select the dataIcon.gif image included in the Materials section of the tutorial.

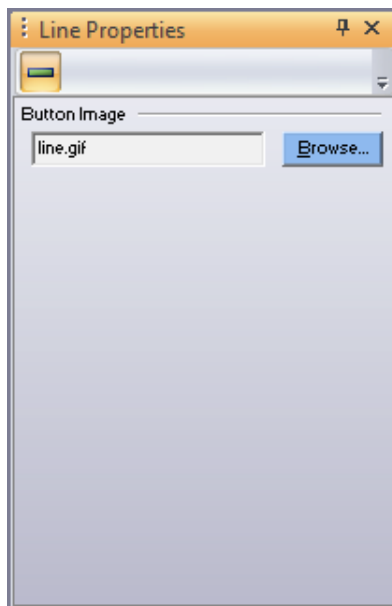


Step 14

Now select the Styled Line element.

Step 15

From the Styled Line properties palette select the browse button and locate and select the line.gif image included in the Materials section of the tutorial.



Tip: The Background image in our tutorial has a gradient. When you create a new blank SiteStyle the background image automatically repeats on both vertical and

horizontal axis. We only want the image to repeat Horizontally. This is simple to change.

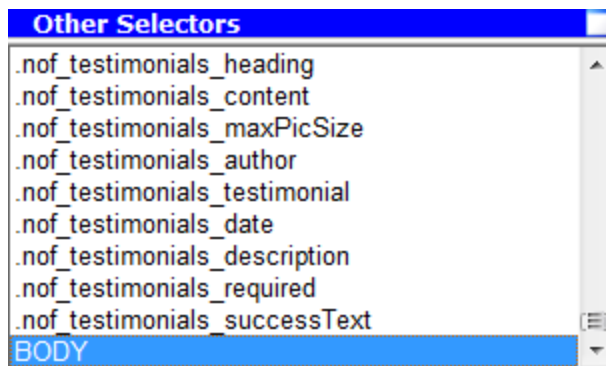
Step 16

While still in the Style view, select the Selectors tab.



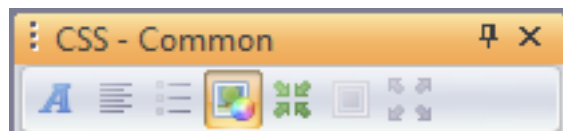
Step 17

Under the Other Selectors options, locate the Body element and select it.



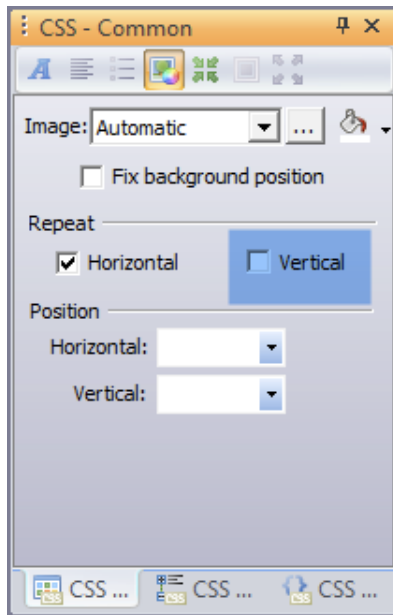
Step 18

In the CSS – Common palette (located to the far right) select the Background tab.



Step 19

Uncheck the option for Vertical repeat.



The new SiteStyle is now complete. There are several options available in a SiteStyle, both text and graphical. Edit them as is required for further customization.

Wrapping Up

We have learned how to create a basic SiteStyle in Corel Website Creator X5. You can create as many SiteStyles as you need for your projects and Websites.