

Adding a custom Style Sheet

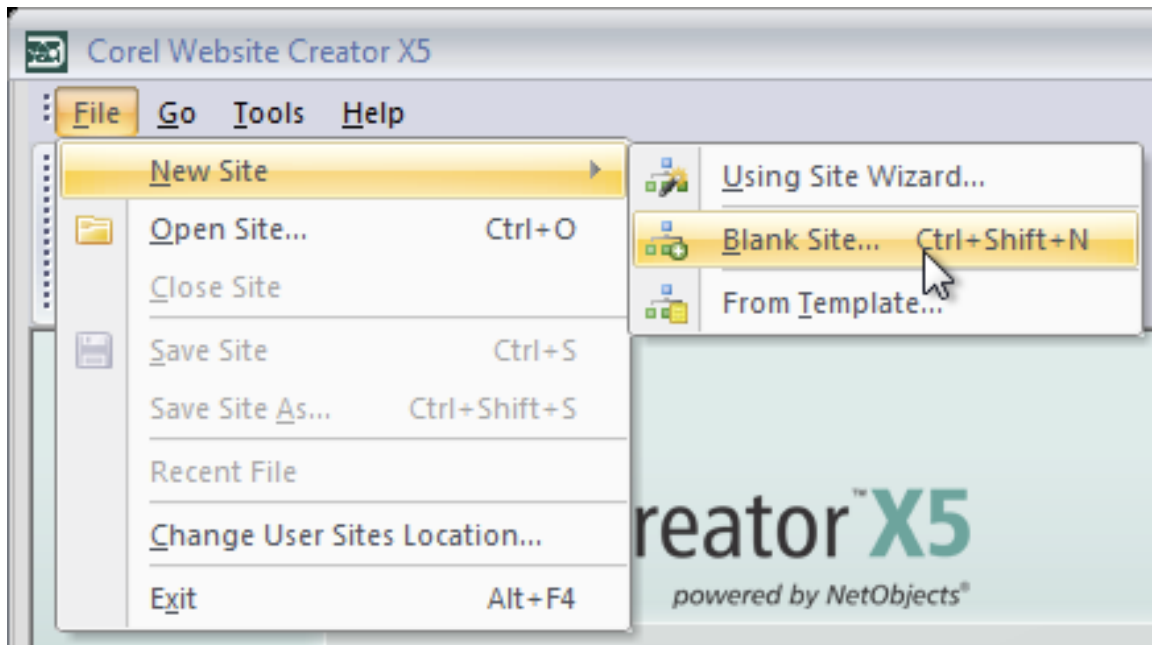
Corel Website Creator X5 can integrate your custom Style Sheet directly into an existing Website. This way you can easily change between Styles, or simply pick and choose when and where a particular Style element is used.

Difficulty: **Intermediate**

Materials: [style2.css](#)

Preparation

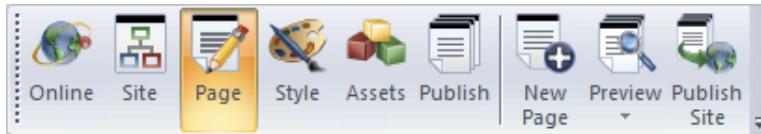
From the File menu in Corel Website Creator X5, select New Site > Blank Site.



Name your site `css_test`.

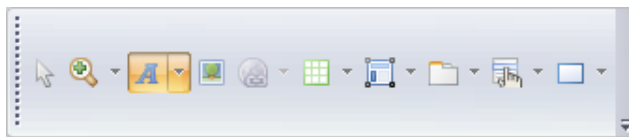
Step 1

From the View bar, select the Page view.



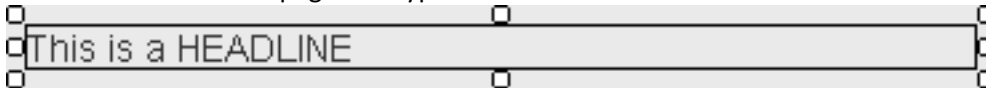
Step 2

From the Standard toolbar, select the text box.



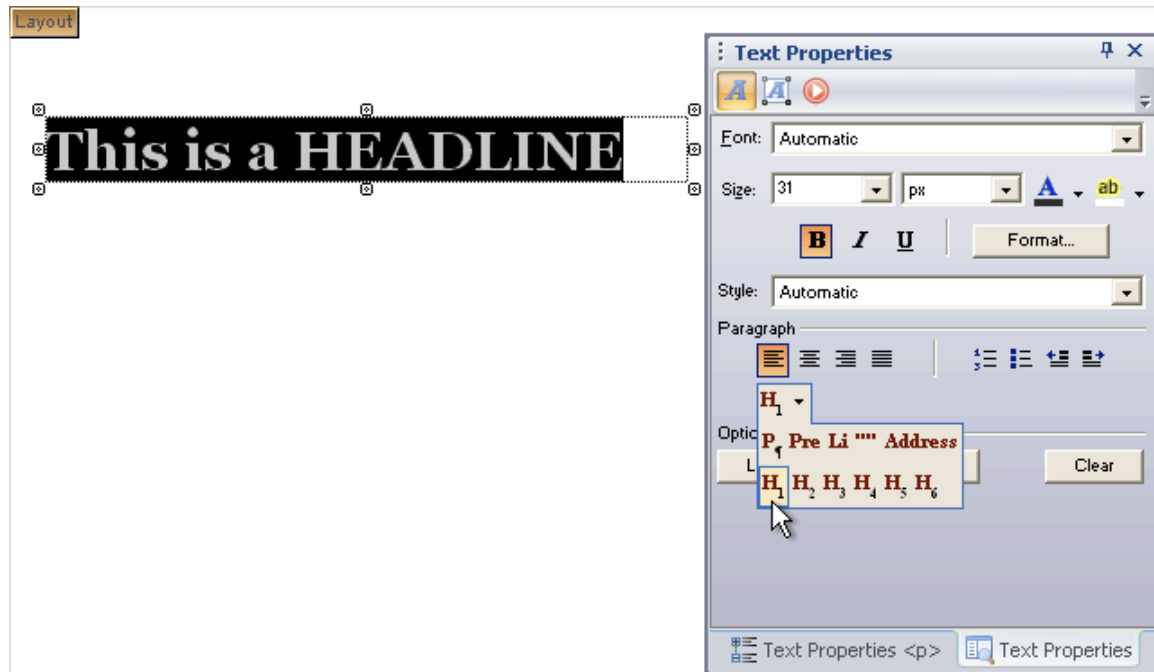
Step 3

Draw a text box on the page and type a short sentence.



Step 4

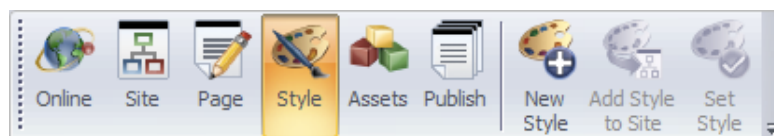
Highlight the text and select the H1 tag from the Properties palette.



Notice the formatting of the standard H1 tag in a new blank site.

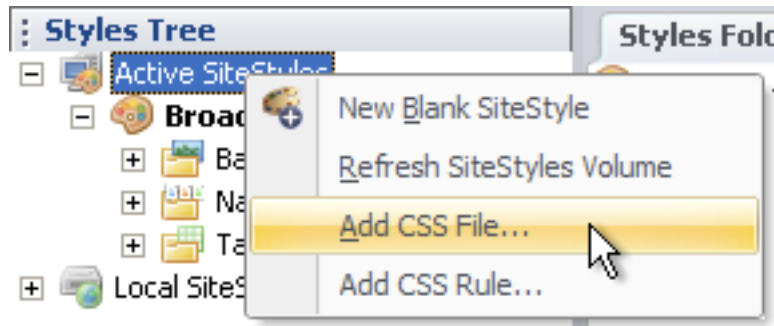
Step 5

From the View bar, select the Style view.



Step 6

From the Styles Tree, right click Active SiteStyles and select Add CSS File...

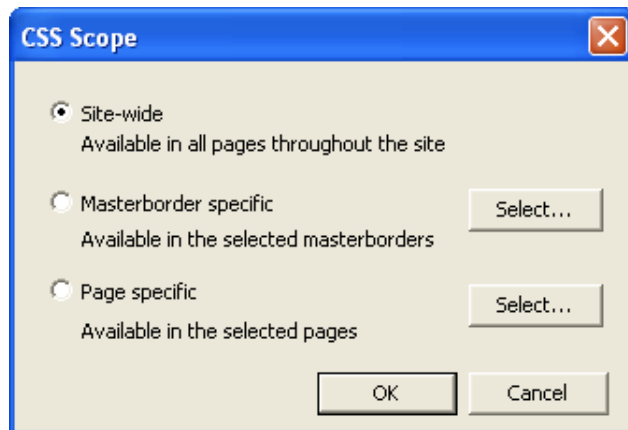


Step 7

The browse dialog window will appear. Browse for your css file and click Open. The style2.css file is provided in the Materials section of this tutorial.

Step 8

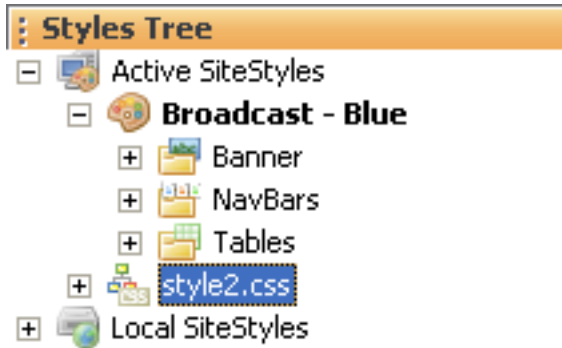
When prompted, select Site-wide from the CSS Scope window.



- SiteWide – Available in all pages throughout the site.
- MasterBorder Specific – Available in the masterborders that you select.
- Page Specific – Available in the pages that you select.

Step 9

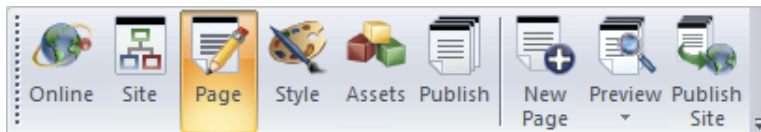
You will now see style2.css under the Active SiteStyles list in the Styles Tree.



Tip: You can now edit style2.css directly from within Corel Website Creator X5.

Step 10

From the View bar, select Page view.



Step 11

Notice the H1 tag is formatted as the Style2.css file designates.



Wrapping Up

You now know how easy adding a custom Style Sheet is in Corel Website Creator X5.

Website Creator X5 maintains flexibility by allowing you to apply your custom Style Sheet to the entire site, select pages, or just your websites masterborders.