



**Give the super heroes in your life an adventure everyone will love.**

We all like pictures that tell us a story. Even better are stories we can tell using pictures. Use your family, friends or even pets for inspiration and come up with a funny, zany, action-packed adventure you can capture in your own comic strip! Pick some of your favorite photos or snap some new ones and see how easy it is to create your own amazing comic creation with Corel software.

## **Corel® Painter™ Essentials 3 - Turn your photos into comic book art**

Turning your favorite pictures into comic book characters is a breeze with **Corel Painter Essentials 3**.

### **What you'll need:**

- Corel Painter Essentials 3
- The various images and other files that are part of the ZIP file you just downloaded. It has all components you'll need to complete this tutorial.

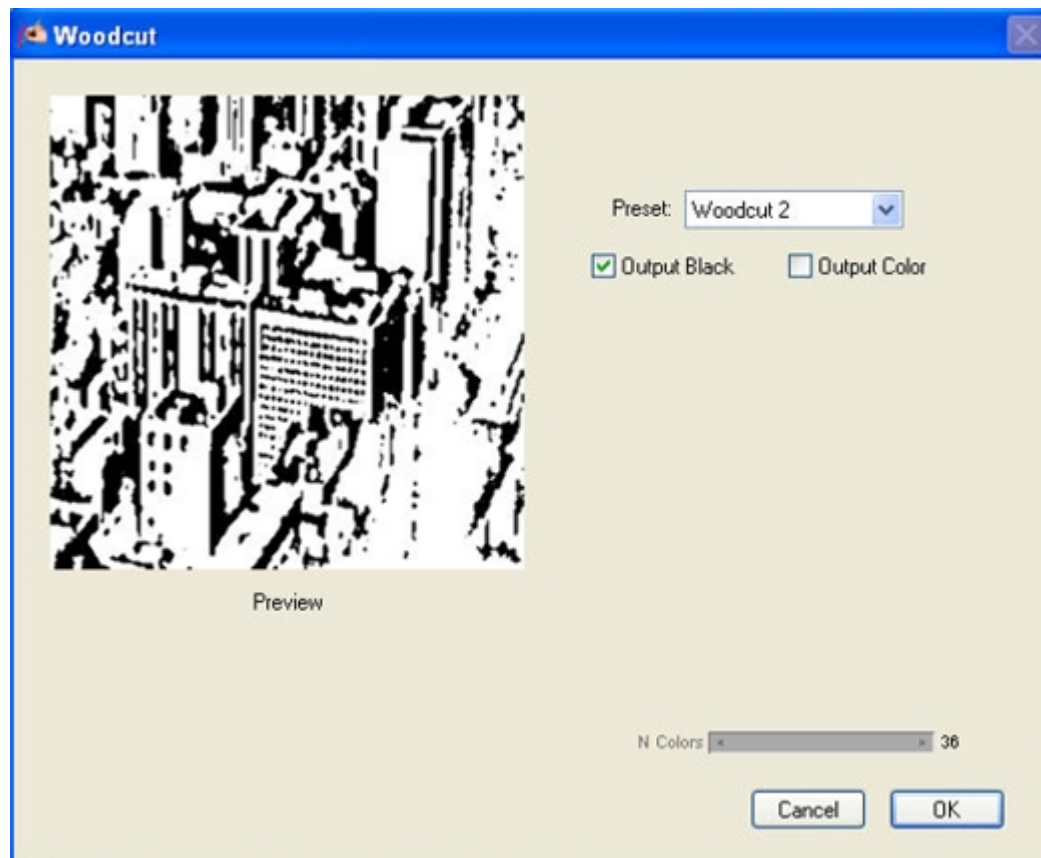
### **When you complete this tutorial, you'll be able to:**

- Use Woodcut effect to turn photos into comic book outlines
- Automatically turn photos into paintings with Photo Painting tools
- Create new layers
- Use pencil and pastel brushes to create a comic book monster

## **Part A: Creating comic book outlines**

Comic book art typically starts with ink, paper and an experienced artist drawing from scratch. In Corel Painter Essentials 3, we can turn our photos into comic book outlines without having to be an artist.

1. Download the samples images and save to your my Pictures folder.
2. Open practice file Frame1-original.jpg
3. Clone your image by going to the File menu and selecting Clone. This allows you to work on a separate canvas using your original image as a reference source.
4. Open the Effects menu, select Surface Control and choose Woodcut using these settings:



- a. Preset: Woodcut 2
  - b. Check Output Black only
5. Click OK.
  6. Save the new image as Frame1-outline.jpg. Saving in JPG format will flatten any layers you may have created. If you wish to preserve additional layers for future changes, save the image as a RIFF file type, Painter Essentials' native format.
  7. Close image.

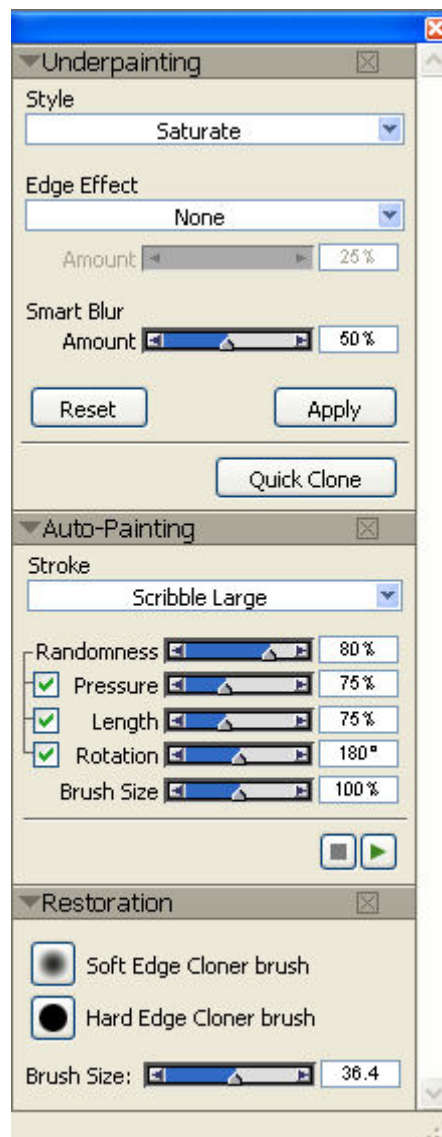
You now have an instant comic book outline. Feel free to color it in using the many brushes available or leave it as is.

## Part B: Turning your photos into paintings

The next step is to turn your photo into a work of art. With the new Photo Painting palettes in Corel Painter Essentials 3, you can paint your photos in a flash! It's as easy as 1 - 2 - 3!

1. Select original open image (e.g. Frame1-original.jpg).
2. Open the new Photo Painting palettes by going to the Window menu and selecting Show Underpainting. These new palettes include Underpainting, Auto-Painting and Restoration.

Photo Painting Palettes:



3. In the Underpainting palette, change the following settings:  
Style: Saturate  
Smart Blur: 50%
4. Click Apply.
5. Click Quick Clone.

*Hint: By default, Tracing Paper is turned on when Quick Clone is applied. To see the full effect of Painter Essentials 3's new Auto-Painting feature, you can turn off Tracing Paper by pressing Ctrl + T.*

6. Select Tinting - Soft Grainy Round from the Brush Selector Bar and change the size to approximately 20 in the Property. Check that the Clone Color button on the color palette is turned on (color wheel should be grayed out):



7. In the Auto-Painting palette, change the following settings:  
Stroke Type: scribble large  
Brush Size: 100%
8. Press the green Play button on the Auto-Painting palette to apply brush strokes to the canvas using the color from the original source image.
9. Press the red Stop button when canvas is filled with paint.
10. Reduce brush size to 50% on the Auto-Painting palette and press Play again. This will add smaller, more detailed brush strokes. Let play for about 10 seconds before pressing Stop.

You can continue to play and stop the auto-painting process, changing the brush and stroke settings each time until you achieve the desired effect.

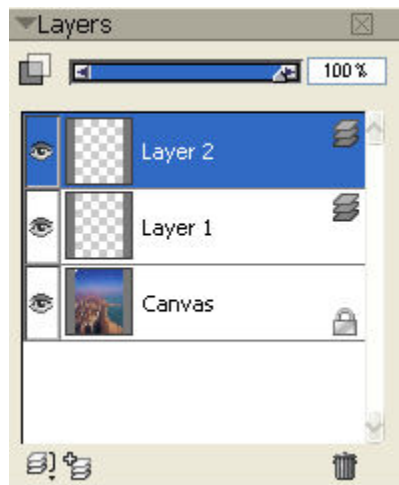
11. In the Restoration palette, select the Soft Edge Cloner and brush over any area of your painting where you want to bring back detail from the photograph, such as building edges or features like eyes and mouths on faces.

**Drawing by hand:**

You can continue to paint and draw on the image if you wish. In this project, a drawing of a scary sea monster was added to our painted image. Here's how to do it.

*Hint: You can use a mouse for the manual painting process although the pressure sensitivity is limited to two levels—on and off. To get the full range of brush sensitivity it is recommend you use a Wacom tablet and pen (Graphic or Intuos).*

1. Open the layers palette from the Windows menu, show Layers.
2. Click twice on Add New Layer button on bottom of the Layers palette to create two new layers.



3. Select the top layer (Layer 2) in the layers palette by clicking on it.
4. Change brush selection to Pencil - 2B Pencil and Size: 3 pt.
5. Select black from the color wheel. If the color wheel is grayed out, press the Clone Color button again to turn it off.
6. Draw an outline of your monster.
7. Select Layer 1 from the Layers palette.
8. Choose Art Pens Brushes - Worn Pastel, Size: 12 pt and select the color of your choice from the color wheel.
9. Brush on color to fill in your monster's outline.
10. When you're finished, save the file as Frame1-painted.jpg
11. Close image.

Repeat Parts A and B for remaining images for the comic strip. Feel free to add in your own details and experiment with the many brushes and other effects found in Corel Painter Essentials 3.

That's it! Now you can share your painted comic photo with everyone!

Plus you can **save 15%** when you print it as a poster or get it printed on a t-shirt by [webshots.com](http://webshots.com), when you [order Corel Painter Essentials 3](#) before May 15! **To order by phone, call toll-free to 1-877-502-6735.**

**Your satisfaction is assured with Corel's No Risk Money-Back Guarantee**



All Corel products come with a "Buy It & Try It" no-risk [30 Day Money-back Guarantee](#)!

Buy today and if you're not completely satisfied with your purchase, Corel will refund your money based on your original method of payment -- excluding any shipping costs. When you contact us about a return, your Corel Customer Service Representatives may inquire as to the reason for your return so we can improve our products and our customer experience.

**Please note:** Only products purchased directly from Corel qualify for the Corel 30-Day Money-Back Guarantee. Purchases made from a retailer must be returned to where you made your purchase and are subject to the return policy of that retailer.