

Landscape Your Yard without Leaving Your Chair

Now that spring is here, it's time to get out in the yard and get to work on that yard you've always dreamed about! But before you get started, you can see what your complete project will look like before you even leave your chair. With Paint Shop Pro Studio and this tutorial, we'll show you how to create the yard of your dreams before you even spend a moment outdoors.



What you'll need:

- Paint Shop™ Pro® Studio
- Sample image landscape.jpg

When you complete this tutorial,
you'll be able to:

- Work with Picture Tubes™
- Use Layers

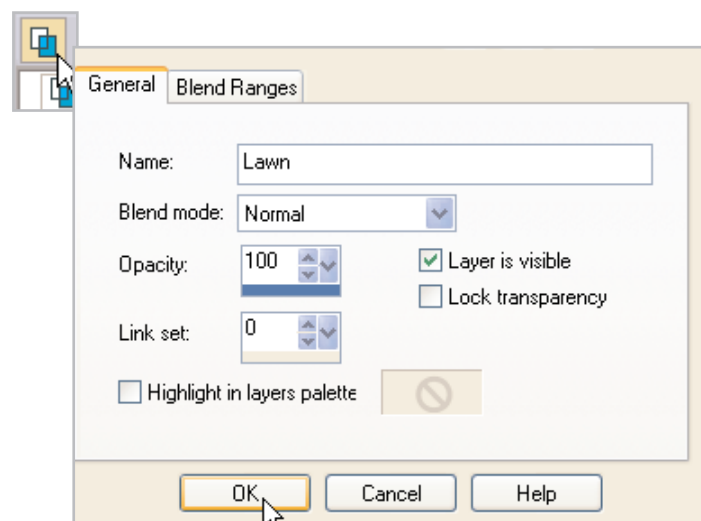
Open the Sample Image

1. Choose **Start > Programs > Jasc Software > Jasc Paint Shop Pro Studio** or double click the Paint Shop Pro Studio Icon on your desktop to open Paint Shop Pro Studio.
2. Choose **File > Browse** and browse to where you saved the kitty.jpg you downloaded. When you find the image, double-click the thumbnail to open it in Studio.

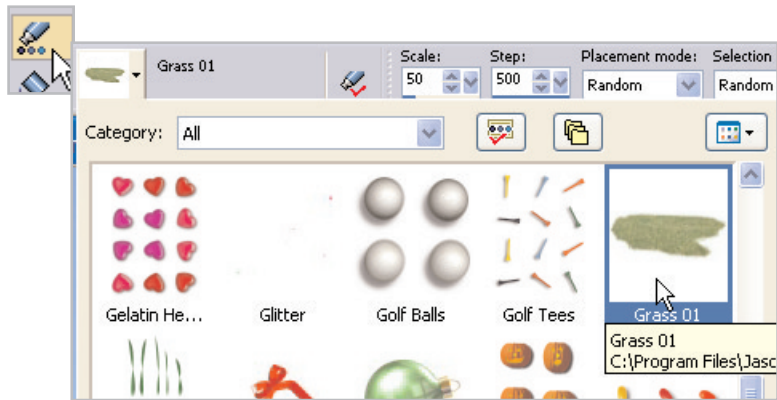


Add Grass

3. On the Layer Palette, click the **New Raster Layer** icon. In the New Raster Layer dialog, change the name to **Lawn** and then click **OK**.



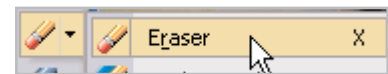
4. Now, select the **Picture Tubes** Tool from the Tool's toolbar. On the Tool Options Palette at the top of the screen, choose **Grass 01** from the drop-down at the top.



5. Now, start clicking on the dirt that makes up the front yard. The yard quickly fills up with grass. Don't worry if you get some grass on the driveway or sidewalk, we'll take care of that in a moment.



6. Once you've filled in the lawn, select the **Eraser** Tool from the Tools Toolbar. On the Tool Options Palette set the Size to **15**. You can leave the rest of the settings as they are.

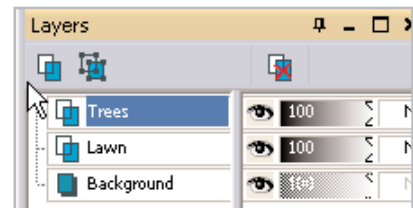


7. Now zoom in on an area of the photo where the grass overlaps the driveway. Click and drag the extra grass to remove it. If you get a little overzealous in your erasing, you can just right-click to un-erase.

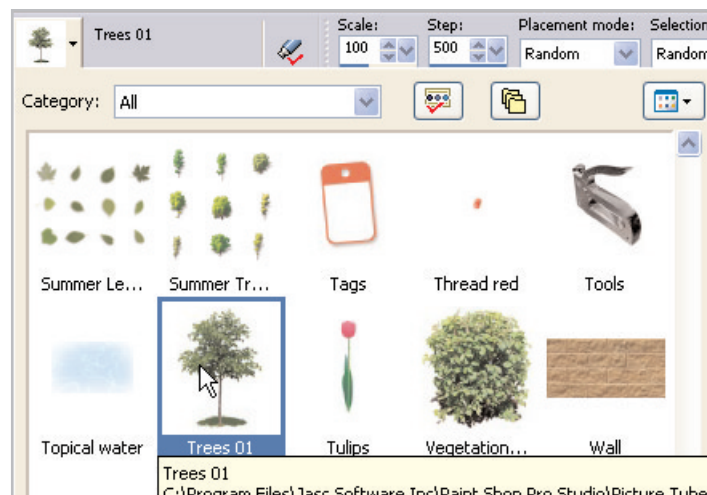


Add Trees

8. Now that you've got a lawn, let's see what the yard would look like with a few trees. Before you add the trees, create a new layer like you did in **Step 3** only this time call the layer **Trees**.



9. Select the **Picture Tube** Tool from the Tools Toolbar (like you did in Step 4) and this time select the **Trees 01** Tube. On the Tool Options Palette, set the Scale to **50**.



10. Then just click around the yard, placing a few trees. If they're still too big for you, you can adjust the scale. To undo the tree placements, press **Ctrl + Z** to undo and click in a different spot of the tree.



Next Steps:

That's all there is to it. Now you can plan your gardens and spring projects before the snow even melts. Next, you should try using the techniques we showed you on a picture of your own house. You can add even more to your photo using the **Vegetation 01** and **Garden 01** Picture Tubes.

