

Design Your Own T-Shirt

Wear your creativity proudly! With Paint Shop Pro, T-shirt transfer paper, and your printer you can make personalized graphics to iron-on to T-shirts. By combining your photos, text, or graphics you can design one of a kind T-shirts for everyone you know.



What you'll need:

- A digital photo
- Jasc® Paint Shop™ Pro®
- A clean T-shirt (prewashed is desired)
- Avery T-shirt Transfers (such as Avery package 3275)
- An iron
- A printer

When you complete this tutorial you'll be able to:

- Open a photo
- Rotate and crop a photo
- Add a border
- Add and format text
- Print an image to iron on a T-shirt

Open the Image

1. Choose **Start > Programs > Jasc Software > Jasc Paint Shop Pro** or double click the Paint Shop Pro Icon on your desktop to open Paint Shop Pro.



2. Choose **File > Browse** or click the **Browse** button on the Standard toolbar to open the Image Browser. Use the Image Browser to find the photo you'd like to use and open it. For this tutorial we're going to use the Halloween photo, you can follow along using your favorite digital photo.

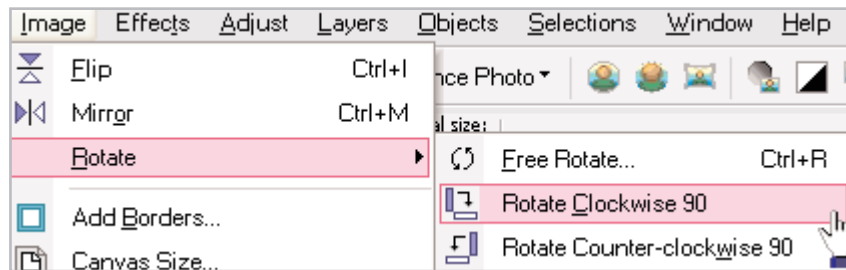


3. Paint Shop Pro's Image Browser works like Windows Explorer. On the left, navigate to the folder containing the photo you want to use. On the right, double-click the photo you want to open.



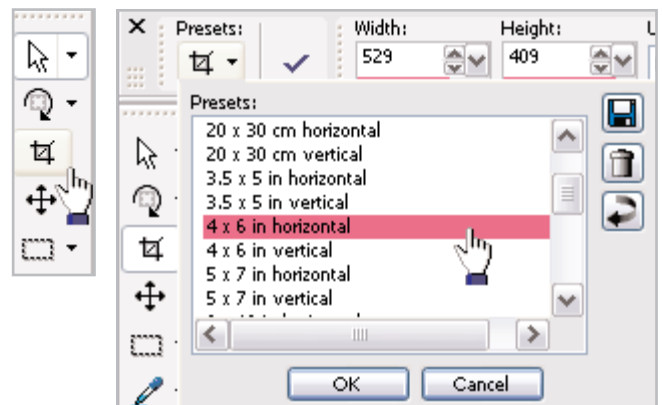
Rotate and Crop Your Photo

4. If the orientation of your photo isn't right you can rotate it. Choose **Image > Rotate** and then choose one of the rotation options.



5. To focus attention on your photo's subject, crop the photo. Choose the **Crop** tool from the Tools toolbar on the left.

- **Freehand Crop:** Click and drag the **Crop** tool across your photo to select the crop area.
- **Preset Crop:** You can crop to a specified photo size, using the presets. Click the down-arrow next to the **Presets** button on the Tool Options palette. From the drop-down list choose a preset size. Once you find the preset you'd like to use click **OK**.

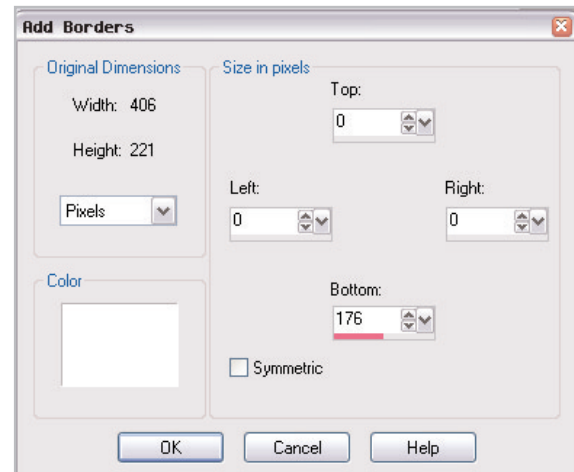


6. Now you should have a crop window on your photo. Click and drag the sides of the crop window to adjust the size. Click inside the crop window and drag it to position the window over the area of the photo you want attention focused. Once you're happy with the crop positioning, double click inside the crop window to apply the crop.



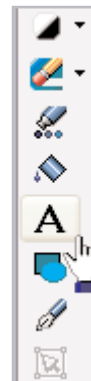
Add a Border

7. Since we want to add a personalized greeting, we'll need to add more space to one side of the photo. Choose **Image > Add Borders**. In the Add Borders dialog, specify an appropriate number of pixels to add to either side of your photo. Here you can see we added 176 white pixels to the bottom of the photo. You'll want to make sure the **Symmetric** box is unmarked. When you've added the pixels, click **OK**.

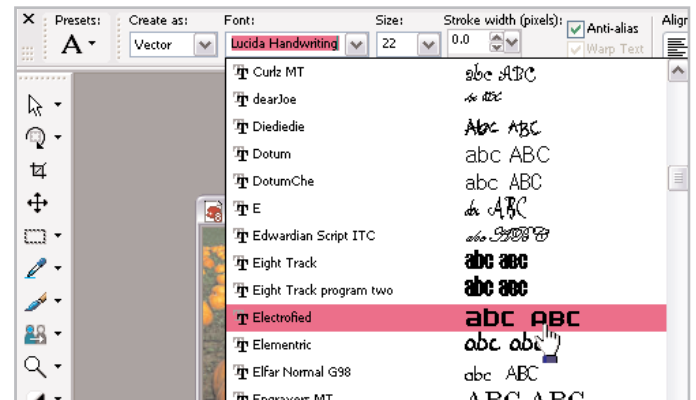


Add Text

8. Now it's time to add a T-shirt slogan using the Text tool. Choose the **Text** tool from the toolbar on the left.



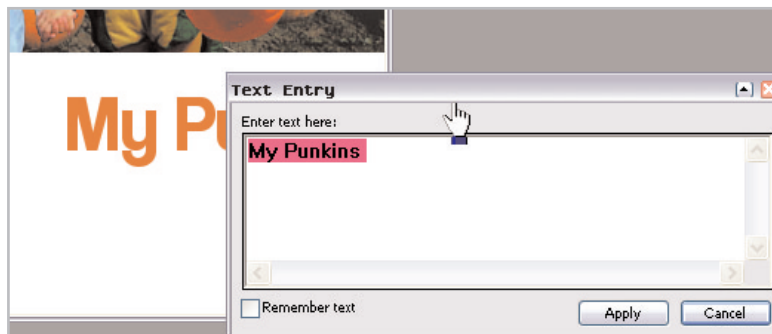
9. In the Tool Options palette at the top of the screen, you can choose your font and font size. Make sure to choose **Vector** from the **Create As:** drop-down, this will let you move the text easily.



10. Once you've set your font and font size, you can set the color using the Materials palette. Click the Background swatch (the lower box) to open the Material dialog, here you can choose the color of your text. You can click any of the color boxes below the circle, click anywhere on the colored circle, or click on an area of your image, to choose a color for your text. Here we used the orange from one of the pumpkins. Once you've chosen a color, click **OK**.



11. Now, click on the white area of your image. This opens the Text Entry dialog, where you'll add your T-shirt slogan. Once you've entered your slogan click **Apply**.

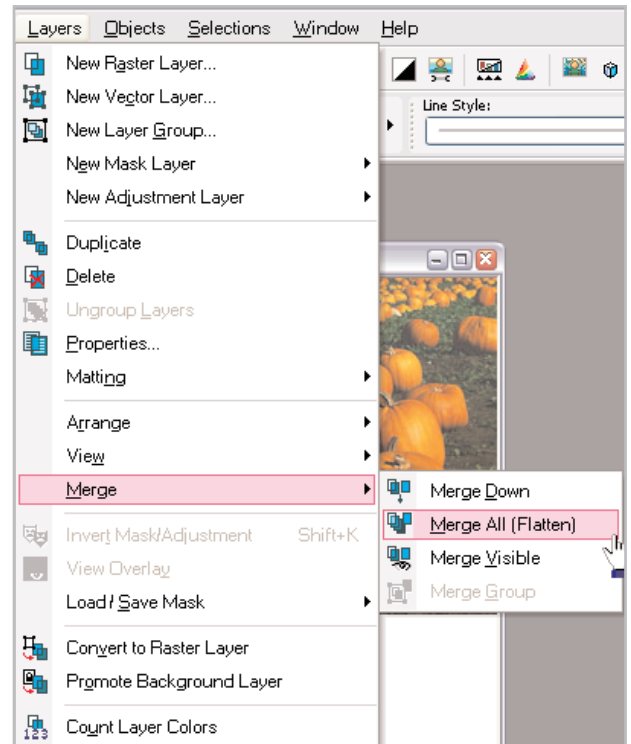


12. Once the text is applied, you can click the center circle and drag the text into place.



Mirror the Image

13. To create an image that will look right when ironed onto a T-shirt, you'll need to reverse it before printing. First, you'll need to merge your layers. Choose **Layers > Merge > Merge All (Flatten)**. Now, choose **Image > Mirror**. The Avery paper package will also have instructions or suggestions on preparing the iron-on image.



Print Your T-Shirt Image and Iron

14. Now you're ready to print. Choose **File > Print Layout**. If you've loaded an Avery T-shirt transfer into your printer, choose **File > Open Template**, and then choose the matching Avery template (such as Avery 3275), or simply choose an 8.5 x 11 inch template.
15. With the special T-shirt printing paper loaded in your printer, click **Print** from the Print Layout window. Once you've got the image printed, follow Avery's instructions for using a hot iron to apply it to the T-shirt.



Who knew being a fashion designer could be so easy? With the skills you've learned in this tutorial and some Avery iron-on paper you can create T-shirts for everyone you know!

